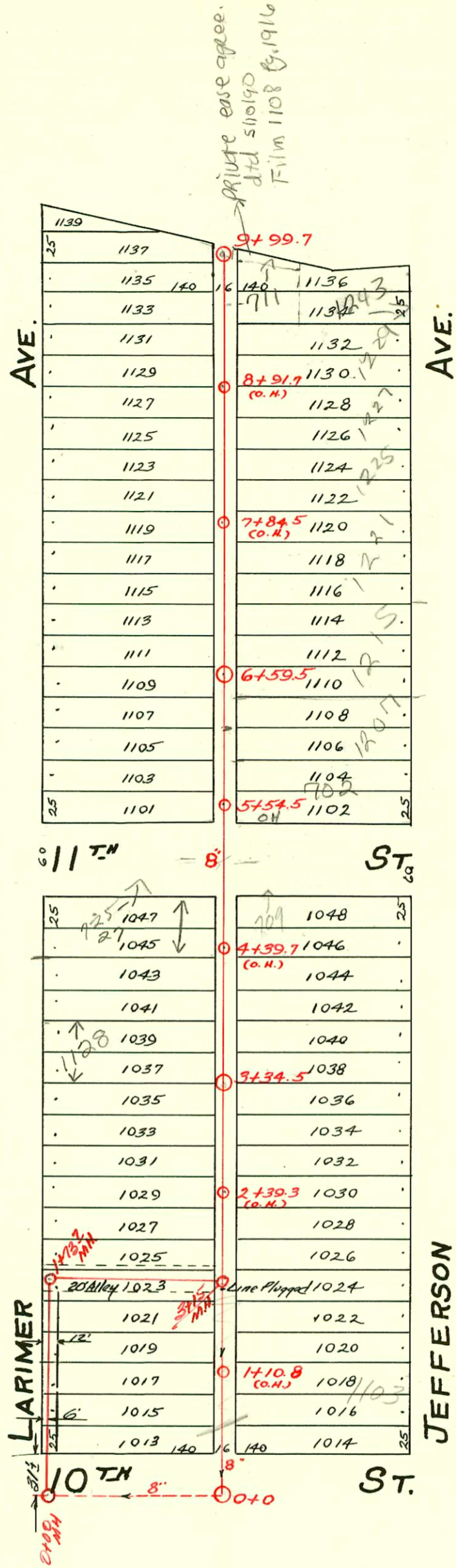


S.S. No. 15-1910  
 DIST. Y- S.S. No. 20-1920



Relocation of Part of SS #15  
 Mid-States Constr Co. Inc. March - 1964  
 Private Job K-75 Booked 4-27-64

2006 - 00012 - c/o - 1145 N Jefferson - (1) kerco, (1) hunclo, (1) 45v, (1) 22v, c/o riser only - shallow - Roto Rooter 3-3-06

CONSTRUCTION RECORD						SERVICE RECORD						
STATION	ELEVATION		Depth	MANHOLE	4-INCH "Y" BRANCHES		No. of Permit		House Number		DATE OF PERMITS	
	Ground	Grade			North West	South East	North West	South East	North West	South East	North West	South East
				9+99.7								
					9+73.5	9+71	#54				2-11-11	
					9+60.5	9+58		#251				9-1-11
					9+32.5	9+30						
9	118.78	111.65	7.13		9+07.5	9+05	#574	#908			6-21-11	7-28-22
					8+76.5	8+74	#263	#91			6-5-12	2-10-22
					8+55.5	8+53						
					8+27.5	8+25	#261	#325	1228 Larimer		3-22-28	8-9-16
8	121.11	111.40	9.71		8+02.5	8+00						
					7+76.5	7+74	#129	#1192	1220 Larimer		3-17-31	9-14-22
					7+51	7+48.5						
7	120.39	111.15	9.24		7+26.5	7+24	#5				1-5-14	
					6+98	6+95.5						
					6+74.5	6+72		#1330				10-27-19
				6+59.5	6+47.5	6+45	#610				12-27-12	
6	119.25	110.90	8.35		6+19.5	6+17	#432	#4369	1207.09 Jefferson		5-20-21	4-14-51
					5+92.5	5+90		#4370	702.4 W. 11th			4-14-51
5	116.25	110.65	5.60		5+67.5	5+65	#931				8-1-22	
					4+63.5	4+61						
					4+35.5	4+33	#2284	#1256	725-27 N. 11th	709.01 11th	11-20-01	7-31-67
4	116.83	110.40	6.43		4+07.3	4+04.8					5-1-40	9-27-22
					3+79.5	3+77	#813	#1699		1149 Jefferson	4-5-19	12-4-29
					3+52.5	3+50	#197				4-6-14	
3	116.63	110.15	6.48	3+34.5	3+28	3+11						
					2+97	2+94.5	#625				11-21-10	
					2+67	2+64.5	#653	#526	1116		11-4-14	6-8-11
					2+37.5	2+35						
2	116.23	109.90	6.33		2+08.5	2+06	#421	#732	1128	1117 Jefferson	7-10-14	9-8-47
					1+82.5	1+80	#633				11-22-10	
					1+52.5	1+50						
					1+24.5	1+22						
1	116.53	109.65	6.88		1+04							
					1+00							
						0+94.5						
					0+68.5	0+66						
0		109.40			0+42.5	0+40		#517		1103 Jefferson		6-15-49

Relocation of Part of SS #15 Private

0+00	115.8	109.40	6.4	2+00 Exist MH								
1+00	117.2	109.60	7.6									
	117.2	at 109.75	7.4	1+73.7								
2+00	117.0	In 109.85	7.1									
		109.90										
3+00												
	117.1	110.14	7.0	3+15.2								

Y So. 3' W. of M.H. on 10th - bet. Larimer & Jefferson - #182 - 4-11-13  
 #518 - Tap - 1103 Jefferson - 6-15-49 - Thompson Plbg. Co.  
 #6405 - Tap - 1139 Jefferson - 11-12-51 - Harry Mann.  
 #14851 - 1243 Jefferson - 10-6-61 - Rainyday Pkg - tap into m.h. 9+99.7  
 #B573 - W. front 1/4 - seal off - 12-16-63 - 1110 Larimer