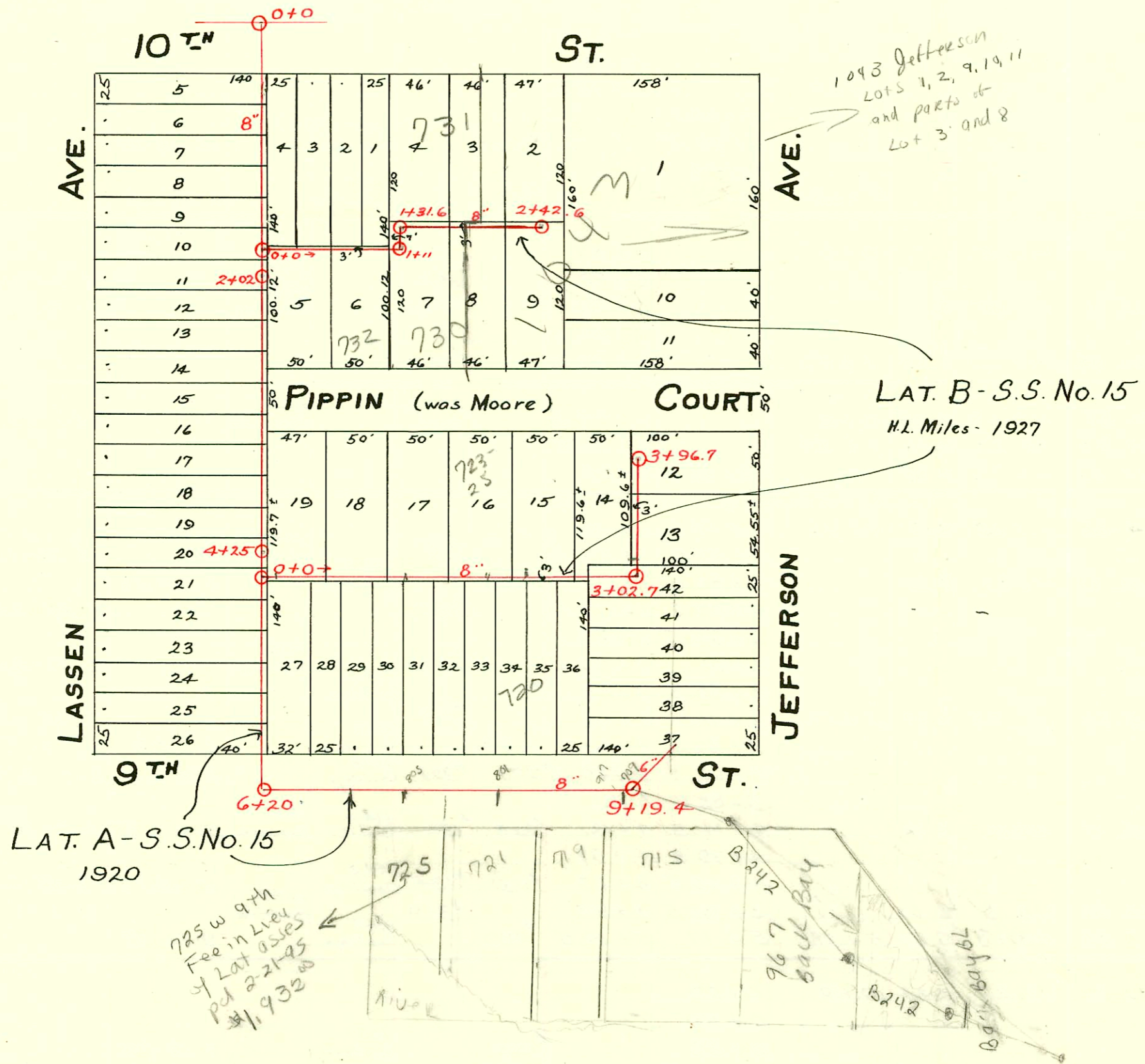


LAT. A - S.S. No. 15- 1920



CONSTRUCTION RECORD

SERVICE RECORD

STATION	ELEVATION		Depth	MANHOLE	4-INCH "Y" BRANCHES		No. of Permit		House Number		DATE OF PERMITS	
	Ground	Grade			North West	South East	North West	South East	North West	South East	North West	South East
0+00	115.30	109.20	6.1	0+00	0+47.5							
0+60	114.14	109.26	4.88		0+72.5							
					0+98.0							
1+10	113.47	109.31	4.16		1+24.2							
1+60	113.60	109.36	4.24		1+49.8							
					1+85.7							
2+10	113.88	109.41	4.47	2+02	2+10.5							
2+60	112.08	109.46	2.62		2+39.5							
					2+64.8							
					2+90.4							
3+10	112.80	109.51	3.29		3+16							
3+60	112.51	109.56	2.95		3+42							
					3+68							
					3+93							
4+10	111.55	109.61	1.94		4+18							
4+60	112.40	109.66	2.74	4+25	4+43.5							
					4+69							
					4+94							
5+0	113.22	109.71	3.51		5+19.2							
5+60	113.37	109.76	3.61		5+45							
					5+70.5							
6+10	115.20	109.81	5.39	6+20	6+30							
6+60	116.81	109.91	6.90		6+58							
					6+81	4" sch 40 6+91.0 top						
					6+83.5		95-45897		725 W 9th			4-4-95
7+10	116.57	109.96	6.61		7+07	7+09.5						
7+60	116.29	110.01	6.28		7+31.5	7+34						
					7+58	7+60.5	#1078					
					7+83.5	7+86						8-24-22
8+10	116.21	110.06	6.15		8+08	8+10.5	#1077	#520				
8+60	115.87	110.11	5.76		8+33.5	8+41						8-24-22 5-17-22
					8+59	8+61.5						
					8+84.5	8+87						
9+20	115.90	110.16	5.74	9+19.4	9+09	9+11.5	#1128					11-16-21
					9+19.4							
					9+46.9	9+49.4						
0+0	114.03	109.60	4.43	0+0	0+08.7							
					0+33.8							
					0+59							
1+0		109.70			0+84.2							
1+11	115.12	109.71	5.41	1+11	1+04.5							
1+31.6	115.45	109.73	5.72	1+31.6	1+40.4	1+42.9						
2+0	116.79	109.80	6.99		1+65.6	1+68.1						
					1+93.6	1+96.1						
					2+12.1	2+14.6						
2+42.6	117.15	109.84	7.31	2+42.6	2+36.8	2+39.3						
Line at So. end of Lots 14-19 Pippin Ct. and 12-13 Jefferson Ave.	0+0	111.69	110.0	1.69	0+0	0+09.0	#2150		735 Pippin Ct.			3-19-40
						0+33.7						
						0+58.7						
						0+83.7	#2149		733 Pippin Ct.			3-19-40
1+0	111.15	110.10	1.05		1+09.1	1+34.3	#2092		721 Pippin Ct.			2-23-40
					1+60.0	1+84.4						
					2+09.6	2+34.3	#2093		721 Pippin Ct.			2-23-40
2+0	112.09	110.20	1.89		2+59.3 N.	2+84.3 N.	#2057		717 Pippin Ct.			12-26-39
					3+02.7	3+14.6 W.						
3+0	112.75	110.30	2.45		3+17.1 E.	3+41.7 E.	#2061		711-15 Pippin Ct.			12-29-39
					3+66.8 E.	3+91.5 E.						
3+96.7	113.37	110.40	2.97	3+96.7								

30 ft. Stub Line from M.H. 9+19.4

Line at So. end of Lots 14-19 Pippin Ct. and 12-13 Jefferson Ave.

#952 - Wye opening into M.H. 9+19.4 - 8-4-22
 #521 - Wye opening into M.H. 9+19.4 - 5-17-22
 #463 - Top - 708 W. 9th - 10-30-36 - Carl E. Carr
 #2060 - Top - 705 Pippin Ct. - 12-29-39 - Ripstro Plbg. Co.
 #2683 - Top - Private line - 738-40 Pippin Ct. - 9-23-40
 #2684 - Private line - 732-34 Pippin Ct. - 9-23-40
 #2685 - Private line - 728 Pippin Ct. - 9-23-40
 #5713 - Top - 726 W. 9th - 18-30-51 - Brodie Plbg. Co.
 #462 - Top - 720 W. 9th - 3-29-54 - Reynolds Plbg. Co.
 Tap at 2+10 M.L. Lansdowne.