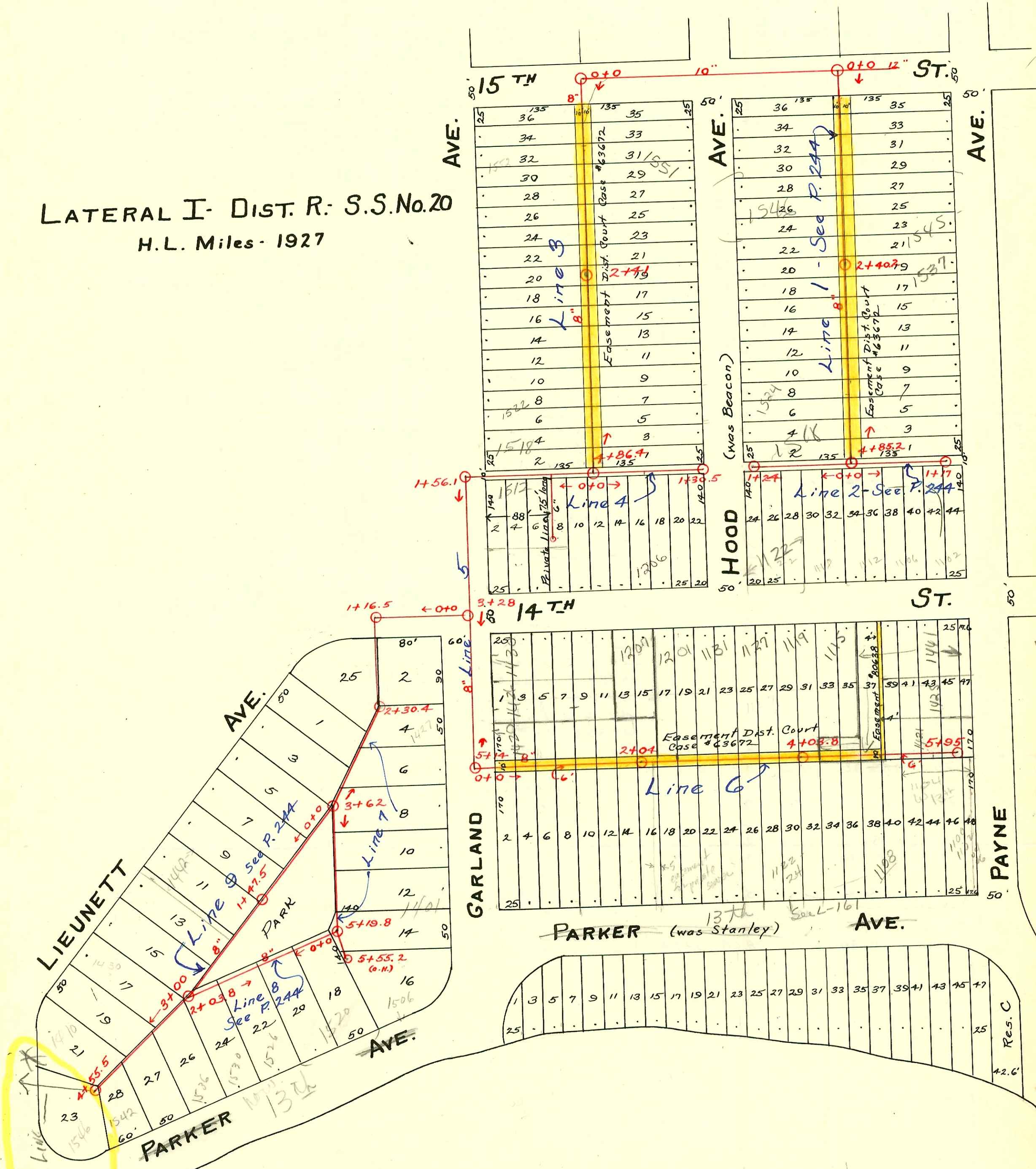


LATERAL I- DIST. R: S.S.No.20
H.L. Miles - 1927



- * 6" Priv. Line TO SERVE 1600-1610 W. 13th
- #9123 1100-02 W. 13th (Franklin) 9-2-83 (M.H. 5-195) (370 W. ft. H)
- 9134 1100-2 W. 13th Russell Building - 9-7-83 (545.5) (30.4 W. ft. H)
- R/ 10179 1552 W. Garland at Harding - 2-9-84 - 0+00 S (1465.0)



CONSTRUCTION RECORD

SERVICE RECORD

STATION	ELEVATION		Depth	MANHOLE	4-INCH "Y" BRANCHES		No. of Permit		House Number		DATE OF PERMITS	
	Ground	Grade			North West	South East	North West	South East	North West	South East	North West	South East
Bet. Hood & Garland, 15th St. So.	0+0	121.73	110.50	11.23	0+0	0+30 0+55.2 0+80.3 1+06	0+27.5 0+52.7 0+77.8 1+03.5	#372 #2633 #648	1554 Garland	1557 Hood	7-27-37	9-4-40 9-9-41
	1+0	120.76	110.60	10.16		1+31.5 1+57.5 1+92.1 2+09	1+29 1+55 1+79.6 2+06.5	#3 #1030 #955	1524 Garland	1547 Hood	1-1-31	8-4-38 7-6-38
	2+0	120.50	110.70	9.80	2+41	2+34.1 2+60.1 2+85.5	2+31.6 2+57.6 2+83	#365 #2677	1529 Garland	1533 Hood	7-20-37	9-21-40
	3+0	120.77	110.80	9.97		3+10.8 3+36.5 3+60.6	3+08.3 3+34 3+58.1	#1336 #413	1528 Garland	1527 Hood	2-4-39	5-6-48
	4+0	120.63	110.90	9.73		3+86.5 4+11.5 4+86.4	3+84 4+09 4+34.5	#1413 #235	1522 Garland	1523 Hood	3-27-39	12-19-41
In Alley N. of 14th Hood to Garland	0+0	119.91	111.70	8.21	0+0		0+11.5 0+37	#23		1219 W. 14th		4-7-33
Line 4-E.	1+0	119.90	111.80	8.10			0+62.7 0+88.1	#1762 #2097		1206 W. 14th 1202 W. 14th		8-9-39 2-26-40
	1+30.5	119.62	111.83	7.79	1+30.5		1+13.3					
West to Garland & So. on Garland	0+0	119.91	110.99	8.92	0+0		0+16.6 0+42					
	1+0	120.81	111.09	9.72			0+42					
Line 4-W.	2+0	120.40	111.20	9.20	1+56.1	0+93	0+66.5	#235	1511 Garland		6-25-36	
	3+0	119.92	111.30	8.62			0+93					
Line 5	4+0	119.55	111.40	8.15	3+28		1+18.3					
	5+0	119.54	111.50	8.04								
5+14	119.53	111.51	8.02	5+14								
Bet. Parker & 14th, Garland to Payne	0+0	119.53	111.51	8.02	0+0	0+26.8 0+52 0+77.5	0+24.3 0+49.5 0+75	#605	1326 Parker			6-6-30
	1+0	119.71	111.61	8.10		1+02.5 1+29 1+53.2	1+00 1+26.5 1+50.7	#555	1420 Garland		12-29-36	
Line 6	2+0	119.36	111.71	7.65	2+04	1+79 2+24.5 2+50.5	1+76.5 2+22 2+48	#3077 #2477 #4783	1207 W. 14th 1309 W. 14th	1146 W. 13th 1136 Parker	7-3-40 10-25-41 12-5-38	4-12-63 5-31-51
	3+0	119.24	111.81	7.43		2+76.2 3+01.3 3+26.7	2+73.7 2+98.8 3+24.2	#2480 #1353	1129 W. 14th 1225 W. 14th		7-5-40 2-18-39	
4+0	119.37	111.91	7.46	4+03.8	3+78 3+97.9 4+26.4	3+75.5 3+95.4 4+23.9	#1244 #1515 #1661	1119 W. 14th 115 W. 14th	1137 1225 W. 14th 1110 Parker	2-4-03 5-3-39 6-19-39	10-11-32	
5+0	119.30	112.01	7.29		4+52 4+77.5 5+02.5	4+49.5 4+75 5+00	#152 #1149 #842	1108 Parker 1104 Parker		10-29-28 9-9-30		
5+28.5					5+28.5 5+53.5 5+84.8	5+26 5+51 5+82.3	#117 #116	1208-10 Parker 1204-06 Parker		9-18-41 9-18-41		
5+95	118.53	112.11	6.42	5+95	5+84.8 5+82.3							
In Bk. West of Garland & No. of Parker.	0+0	119.92	111.32	8.60	0+0	1+42.5 1+68	1+40 1+65.5	#572	1468 Lievenett	1433 Garland	11-13-41	10-6-39
	1+0	120.42	111.42	9.0	1+16.5	1+93.2 2+18.5	1+90.7 2+16	#880				
Line 7.	2+0	120.12	111.52	8.60	2+30.4	2+46 2+71.3	2+43.5 2+68.8	#511	1446 Lievenett	1429 Garland	11-23-36	10-8-38
	3+0	120.52	111.62	8.90	3+62	2+96.2 3+21.9 3+47.5	2+93.7 3+19.4 3+45	#1608 #1358	1462 Lievenett		5-31-39 2-27-39	
4+0	120.57	111.72	8.85		3+74.6 3+99.5 4+25	3+74.6 3+99.5 4+25	#233	1458 Lievenett	1417 Garland		5-2-31	
5+0	121.02	111.82	9.20	5+19.8	4+76 5+01	4+76 5+01	#1419	1415 Garland		3-31-39		
5+19.8	121.03	111.84	9.19		5+29	5+29						
5+55.2	121.05	111.88	9.17	5+55.2	5+52.3	5+52.3	#22	1590f Garland	1401 Garland		7-17-62	
												2-13-35

(Cont. on P. 244)

- *1414-Top-1303 Parker-10-4-29-Simmons Pibq. Co.
- *1415-Private line-1315 Parker-10-4-29-Simmons Pibq. Co.
- *1500-Private line-1410 Lievenett-10-21-29-Geo. Sargent.
- *4-Top-1528 Garland-Fay Kendall-1-25-33
- *188-Top-1502 Garland-Chester Davidson-6-3-36.
- *189-Private line-1508 Garland-Chester Davidson-6-3-36.
- *175-Top-1512 Garland-5-28-36-Chester Davidson.
- *766-Top-1426-Garland-3-24-38-John Riedel
- *961-Top at 0+90-Line 4-1515 Hood-7-7-38-C.M. Wyant.
- 2003-02292) #12103-R-Roto-4" PVC-20 @hoase, 2H22-1H45
- *930-Top-1421 Payne-6-21-38-J.E. Lansdowne.
- *941-Top-1538 Garland-6-28-38-R. La Foy.
- *1234-Top-1537 Hood-12-2-38-Kansas Pibq. Co.
- *1243-Top-1421 Garland-12-5-38-John Riedel
- *1343-Top-1430 Garland-2-10-39-T.R. Watson
- *1375-Private line-1423 Payne-3-9-39-J.E. Lansdowne.
- *1376-Private line-1423 Payne-3-9-39-J.E. Lansdowne.
- *1713-Top-1510 Hood-7-18-39-T.P. Hager.
- *2137-Private line-1441 Payne-3-16-40-J.E. Lansdowne.