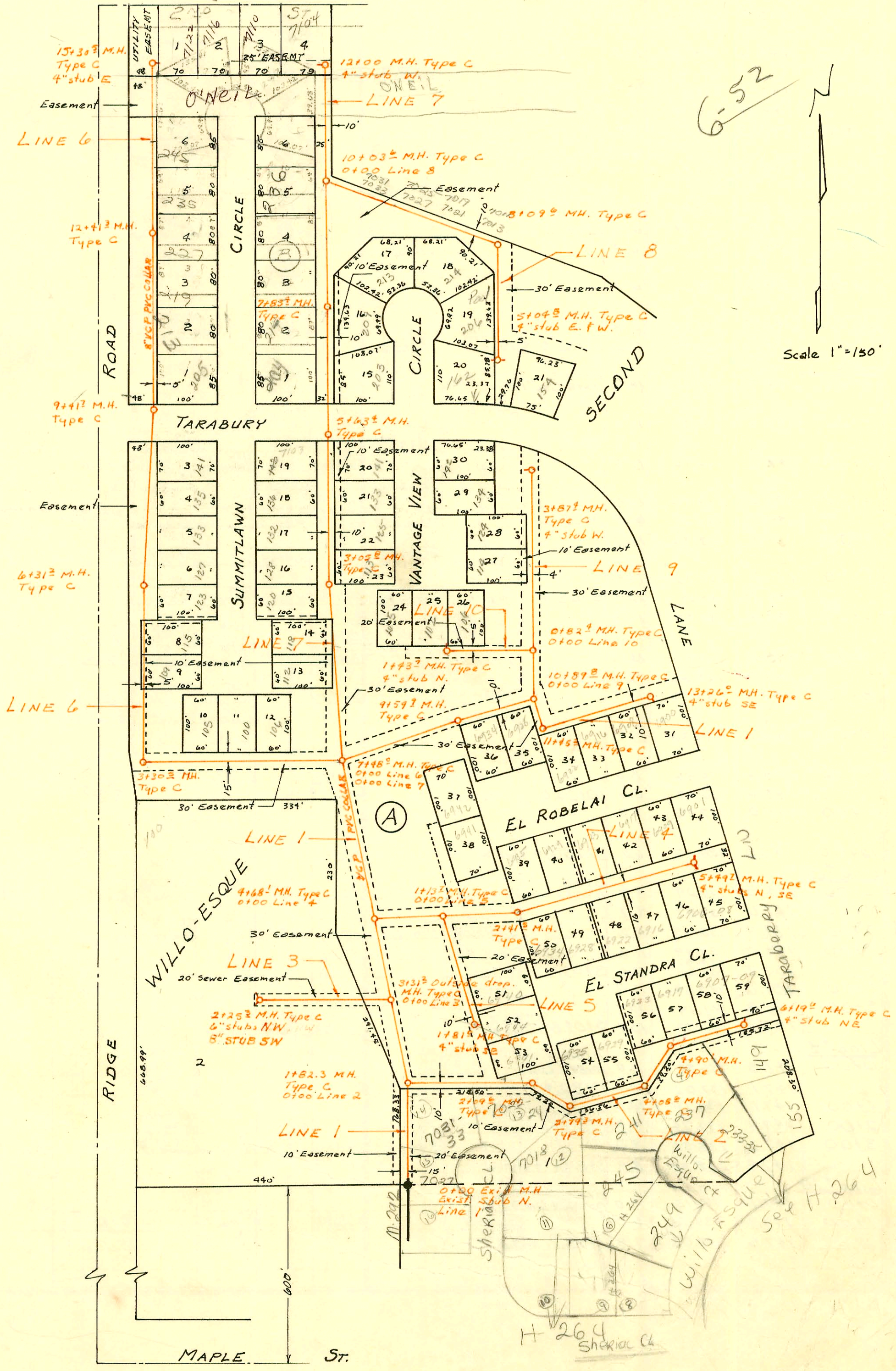


LAT 3, MAIN 6, S.W.I. SEWER  
BUILT BY: W.B. CARTER CONST. CO. INC.  
PROJECT NO. DBKL575048  
BOOKED 6-16-76 FROM DCD-120-A



6-52

Scale 1"=150'

H 264  
See H 264

CONSTRUCTION RECORD						SERVICE RECORD						
STATION	ELEVATION		Depth	MANHOLE	4-INCH "Y" BRANCHES		No. of Permit		House Number		DATE OF PERMITS	
	Ground	Grade			North West	South East	North West	South East	North West	South East	North West	South East
<b>Lat 3, MAIN 6, SWI</b>												
<b>Line #1</b>												
0+00	144.0	127.78	16.2	0+00 Exist		4" SDR35 +07.0 tap		93-791-7		7027 W. Sheridan Co		4-6-93
1+00	145.4 147.2	128.18 128.51 OUT 128.59 IN	17.2 18.6	1+82.3 stub by permit								
2+00												
3+00	149.0 149.8	129.08 129.19	19.9 20.6	3+31.2								
4+00	152.7 153.6	129.48 129.74	23.2 23.9	4+68.1								
5+00	154.0	129.88	24.1									
6+00	151.8	130.28	21.5									
7+00	150.1 149.8	130.68 130.86 OUT 133.04 IN	19.9 18.9 16.8	7+48.0								
8+00	150.0	133.59	16.4							6934 El Robelai		
9+00	149.1 148.3	134.59 135.14	14.5 13.2	9+59.9						6938 El Robelai		7-28-76
10+00	147.7 147.6	135.59 136.44 OUT 136.54 IN	12.1 11.1	10+89.8		10+23.8		256950				
11+00	147.8 148.0	136.69 137.10 OUT 137.20 IN	11.1 10.8	11+45.2		11+81.6		256949		6939 El Robelai		7-28-76
12+00	148.0	137.79	10.2			12+06.4 12+07.6		256948 256947		6940 El Robelai		7-28-76
13+00	149.5 148.7	138.79 139.00	10.7 9.7	13+26.0 4" stub SE				56946		6930 El Robelai		7-28-76
<b>Line #2</b>												
0+00	147.1	131.39	15.7	0+00 = 1+82.3 Line 1						7081-33 Sheridan Co		7-19-90
1+00	145.6	132.39	13.2		1+66.3			26165		6941 El Robelai		5-24-76
2+00	146.1 146.1 147.2	133.39 133.48 OUT 133.50 IN 134.30 OUT 134.40 IN	12.7 12.5 12.8	2+09.6 2+79.3				24455 24458		7082 Sheridan Co 7024 Shack 7018 Sheridan Co		12-12-89 12-12-89 6-29-92
3+00	147.4	134.59	12.8		3+06.3			25592		6935		5-24-76
4+00	149.2 149.2 149.4	135.59 135.69 OUT 135.79 IN 136.61 OUT 136.71 IN	13.6 13.4 12.7	4+08.6 4+90.1	3+71			23021		6929 El Robelai 241 S. Willis		5-7-76 4-25-89
5+00	149.4	136.79	12.6		5+17.6			25589 25587		6923 6917		5-24-76 7-27-90
6+00	148.4 148.3	137.79 138.00	10.6 10.3	6+19.6 4" stub NE	5+83.3			23157		6909 El Robelai 6907		7-30-76 7-30-76
<b>Line #3</b>												
0+00	150.1	137.65	12.4	0+00 = 3+31.2 Line 1								
1+00	151.3	138.65	12.6		3+13.3 3+08.3			253607 253603		7083-47 Ridge Rd 7078-02 Ridge Rd		2-4-76 2-4-76
2+00	149.3 148.3	139.65 140.00	9.6 8.3	2+25.3 6" stub SW 6" stub NW								
<b>Line #4</b>												
0+00	153.7	132.44	21.3	0+00 = 4+68.1 Line 1								
1+00	152.0 151.8	133.44 133.58	18.6 18.2	1+13.7				269111 269110		6942 El Robelai 6935 El Robelai		70-27-78 10-27-78
2+00	150.0 149.3	134.44 134.84 OUT 134.94 IN	15.6 14.4	2+41.5				266333 266588		6934 El Robelai 6929 El Robelai		5-10-78 5-25-78
3+00	149.0	135.54	13.5		3+42.3 3+60.3			266587 266613		6925 El Robelai 6915 El Robelai		9-11-79 8-29-78
4+00	148.8	136.54	12.3		4+42.3			266614		6917 El Robelai 6906		5-25-78
5+00	148.8 148.6	137.54 138.05	11.3 10.5	5+49.7 4" stub N 4" stub SE	5+13.4			266596 266585		6916 El Robelai 6906 El Robelai		5-24-76 5-24-76
<b>Line #5</b>												
0+00	151.7	136.60	15.1	0+00 = 1+13.7 Line 4								
1+00	149.4 147.5	137.60 138.40	11.8 9.1	1+81.0 7" stub SE				255603 255600		6940 El Robelai 6944 El Robelai		5-24-76 5-24-76
<b>Line #6</b>												
0+00	149.7	130.96	18.7	0+00 = 7+48.0 Line 1								
1+00	147.4	131.36	16.0					268455		106 N. Summit Lane		9-20-78
2+00	146.2	131.76	14.4					267049		Summit Lane		7-12-78
3+00	145.6 145.6	132.16 132.28 OUT 132.38 IN	13.4 13.2	3+30.5				11390		Summit Lane		7-10-84
4+00	145.7	132.66	13.0		4+72.9 TAP			18045		109 Summit Lane		4-2-87

Continued on B-251