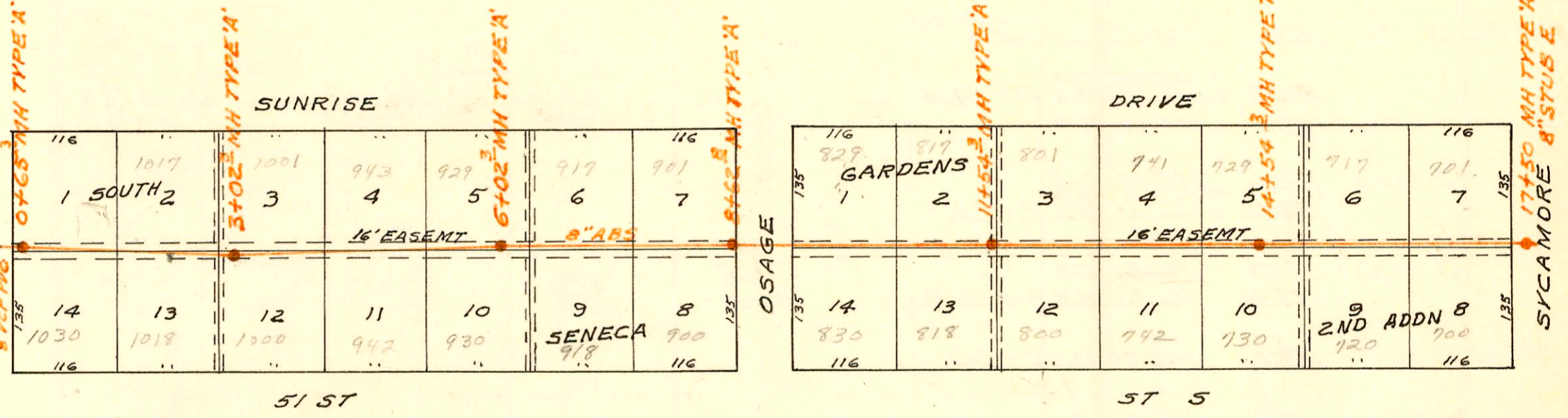


LATERAL 10 MAIN 2 SOUTHWEST INTERCEPT
 BUILT BY: WOODSIDE CONST. CO.
 PROJ. NO DBKL575027
 BOOKED 6-21-76 FROM 253Y

0+00 EXISTING MH
 0+25 PIPE REPLACED TO HERE
 SENECA 0+40 BEGIN PIPE
 8" CP 16"



LATERAL 11 MAIN 3 SOUTHWEST INTERCEPT
 BUILT BY: WB CARTER CONST. CO.
 PROJ. NO DBKL572008
 BOOKED 6-22-76 FROM ARG1

SCALE 1"=150'

CONSTRUCTION RECORD

SERVICE RECORD

STATION	ELEVATION		Depth	MANHOLE	4-INCH "Y" BRANCHES		No. of Permit		House Number		DATE OF PERMITS			
	Ground	Grade			North West	South East	North West	South East	North West	South East	North West	South East	North West	South East
LATERAL 10 MAIN 2 SOUTHWEST INTERCEPTOR														
0+00	88.6	82.67	5.9	0+00	0+93.4	1+02.6	C64420	C58365	4358 S. Handley	4357 Bartlow	12-13-77	11-9-76		
1+00	89.6	82.87	6.7											
2+00	89.5	83.07	6.4		1+73.8	1+73.7	C63163	C66125	4346 S. Handley	4344 Bartlow	9-21-77	4-27-78		
	89.4	83.23	6.2	2+80.3	2+73.3			C66124	4345 Bartlow			4-28-78		
3+00	89.5	83.27	6.2		3+06.3			C55917	4336 S. Handley		6-14-76			
						3+73.6		C56789	4325 Bartlow			7-20-76		
4+00	89.3	83.47	5.8		4+04.3			C55916	4326 S. Handley		6-14-76			
5+00	89.4	83.67	5.7		5+10.5			9633	4314 Handley			11-9-83		
	89.3	83.78	5.5	5+50.5	4" STUB NW			C64665	4306 S. Handley			12-29-77		
LATERAL 11 MAIN 3 SOUTHWEST INTERCEPTOR														
0+00	84.2	75.29	8.9	0+00 EXISTING										
0+40		75.35												
	83.8	75.39	8.4	0+65.3										
		75.49	8.3		0+70.8	0+74		C72022	C61943	5160 S. Seneca	1030 W. 51st S.		7-8-77	
1+00	83.3	75.55	7.8											
					1+96.3			C68087		1017 Sunrise	1018 W. 51st S.		8-28-78	
2+00	83.2	75.72	7.5			2+29.3			C76124				1-15-80	
3+00	83.2	75.89	7.3											
	83.2	75.89	7.3	3+02.3	3+36.3	3+61.8		C55556	C66799	1001 Sunrise	1000 W. 51st		5-20-76	
4+00	83.5	76.02	7.5											
					4+46.5	4+17		C56103	C61958	943 Sunrise	942 W. 51st S.		6-24-76	
5+00	82.8	76.16	6.6											
					5+53.2	5+94.3		C57381	18638	929 Sunrise	930 W. 51st S.		1-5-77	
6+00	83.0	76.30	6.7											
	83.0	76.30	6.7	6+02.3										
						6+24.5			C56742		918 W. 51st S.		7-16-76	
7+00	83.3	76.45	6.9											
					6+91.3			C67347		917 W. Sunrise			7-13-78	
8+00	83.9	76.60	7.3											
	83.9	76.69	7.2	8+62.8	8+37.8	8+50.0		C55892	9612	901 Sunrise	900 W. 51st S.		6-14-76	
9+00	84.1	76.75	7.4											
					9+74.0			C60034		829 Sunrise			2-22-77	
10+00	84.1	76.90	7.2											
					10+88.3	10+50.1		17364	C55961	817 Sunrise	830 W. 51st S.		1-2-87	
11+00	84.1	77.05	7.1											
	84.3	77.13	7.2	11+54.3		10+67.8			C57406		818 W. 51st S.		8-26-76	
12+00	83.7	77.20	6.5											
						12+43.6			C56745		800 W. 51st S.		7-16-76	
13+00	83.6	77.35	6.3											
						13+09.3			C56724		742 W. 51st S.		7-15-76	
14+00	83.6	77.50	6.1											
	84.0	77.58	6.4	14+54.3	13+32.8	14+25.9		C56183		741 Sunrise	730 W. 51st S.		6-27-76	
					14+33.0				C61255		729 Sunrise		5-24-77	
15+00	83.7	77.65	6.1											
					15+39.0	4" SCH 40 15+38.8		C70810	2001-00283	717 Sunrise	720 W. R. 51st S.	See below	3-22-79	
16+00	84.8	77.80	7.0											
					16+85 TAP	16+64.9 TAP		18198	C65095	701 W. Sunrise	700 W. 51st S.		4-20-87	
17+00	84.9	77.95	7.0											
	85.0	78.03	7.0	17+50										

2001-00283-2/8/81-720 W 51st STS-Overnight-4" SCH 40-Hsmnt ok-Replaced entire Line