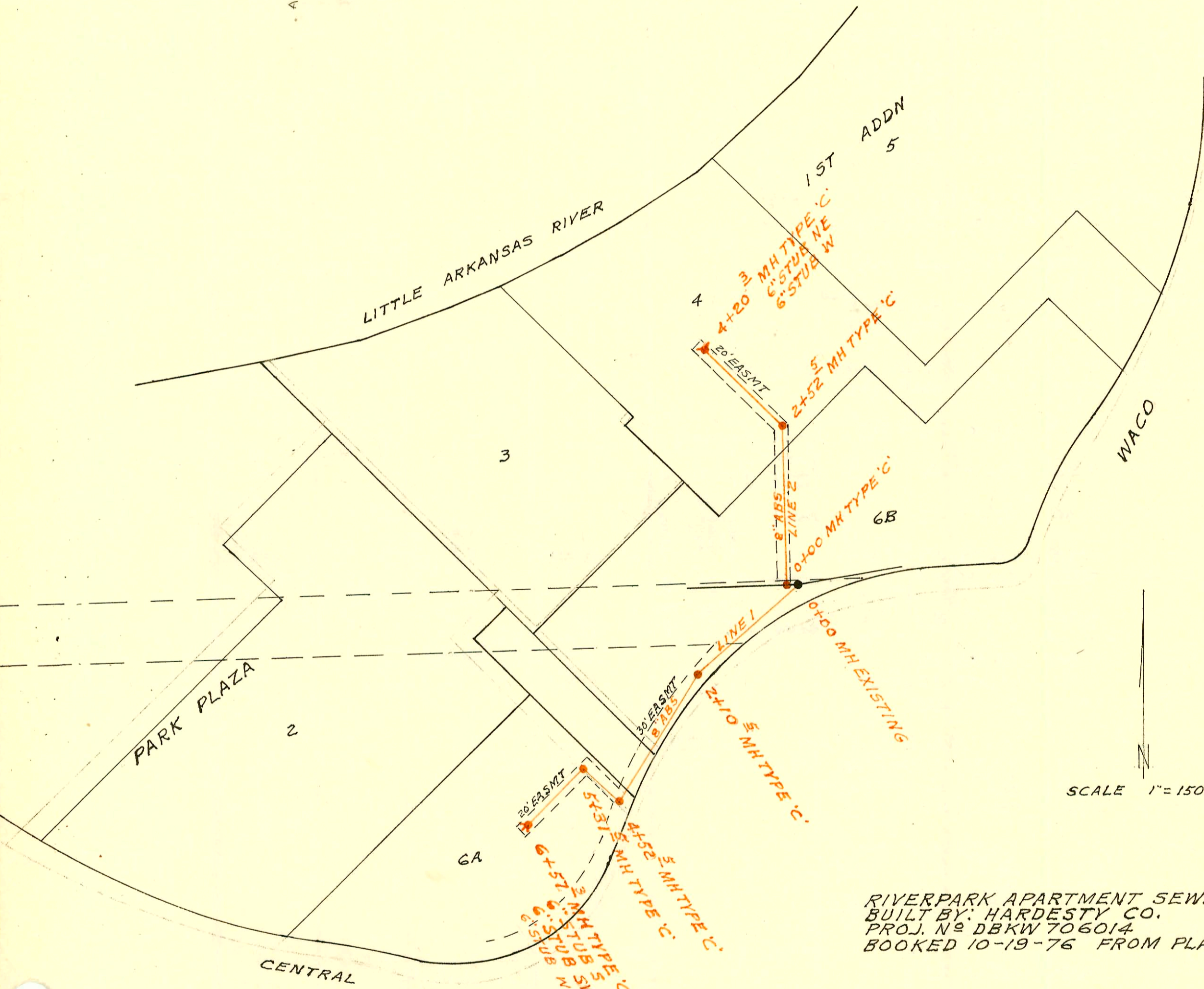


*Post-Bldgs to be replaced 12-4-77*  
*Bldg sewers need to be trapped and needs to make any new taps even on 15" ABS per C. Fugit 1-19-600*

RECONSTRUCT PART of MAIN A SAN SEWER N<sup>o</sup> 1  
 BUILT BY: MID STATES CONST. CO.  
 PROJ. N<sup>o</sup> DBKM 576032  
 BOOKED 10-13-76 FROM AR-4 55

SCALE 1"=150'



SCALE 1"=150'

RIVERPARK APARTMENT SEWER  
 BUILT BY: HARDESTY CO.  
 PROJ. N<sup>o</sup> DBKW 706014  
 BOOKED 10-19-76 FROM PLAN & AR955

CONSTRUCTION RECORD

SERVICE RECORD

STATION	ELEVATION		Depth	MANHOLE	4-INCH "Y" BRANCHES		No. of Permit		House Number		DATE OF PERMITS	
	Ground	Grade			North West	South East	North West	South East	North West	South East	North West	South East
RECONSTRUCT PART of MAIN A SAN SEWER N <sup>o</sup> 1 - 120 W. Orme												
0+00	109.1	100.91	8.2									
	109.1	100.92	8.2	0+05								
1+00	108.8	101.02	7.8		0+88	0+50.2	C57653	C57657	# 1	# 6	9-10-76	9-10-76
						1+39.2		C57658	2510232	# 7		9-10-76
2+00	109.5	101.13	8.4		1+23.2	1+93.3	C57659	C57660	# 2	# 9	9-10-76	9-10-76
	109.7	101.16	8.5	2+31.5	2+07.2	2+10.2	C57655	C57659	# 3	# 8	9-10-76	9-10-76
3+00	110.5	101.24	9.3		3+19.3		C69912	2001-02230	Laundry Bldg. #1	120 ORME #1	12-19-78	9-6-01
					3+01	3+98.2	C57656	97-22057	# 4	# 5	9-10-76	12-2-97
4+00	110.1	101.35	8.7					2001-02232		118.510 main 120 W ORME #3		9-6-01
	109.4	101.41	8.0	4+59.0				2001-02233				
4+67.0	109.4	101.42	8.0									
RIVERPARK APARTMENT SEWER - 400 W. Central												
LINE 1 0+00	113.5	101.90	11.6									
1+00	112.7	102.60	10.1		1+31		C57149		# 4		8-10-76	
2+00	113.1	103.30	9.8									
	114.4	103.37	11.0									
3+00	113.1	104.10	9.0									
					3+49.2		C57153		# 9		8-10-76	
4+00	113.0	104.80	8.2		4+29.2		C57154		# 8 (cont)		8-10-76	
	114.0	105.16	8.8		4+07.0		C57160		# 17		8-10-76	
5+00	113.2	105.71	7.5		5+11.2		C57131		# 12		8-10-76	
	113.5	105.90	7.6									
		106.10	7.4	5+31.5								
6+00	113.4	106.60	6.8				C57013		# 10		8-3-76	
	113.5	106.98	6.5	6+57.3	6" STUB W	6" STUB SW	6" STUB S					
LINE 2 0+00	112.3	102.63	9.7									
1+00	113.2	103.63	9.6		1+13		C57151		# 6		8-10-76	
					1+33.2		C57146		# 1		8-10-76	
2+00	113.3	104.63	8.7		1+73.2		C57148		# 3		8-10-76	
	113.0	105.16	7.8		2+66		C57152		# 7		9-10-76	
		105.26	7.7	2+52.5								
3+00	113.6	105.74	7.9			2+81.2	C57156		# 16		8-10-76	
						3+11.2	C57157		# 17		8-10-76	
4+00	113.8	106.74	7.1									
	113.5	107.00	6.5	4+20.3	6" STUB W	6" STUB NE						

2001-02299 9/13/01 120 W. Orme (subhouse) padsett & ENTERPRISES