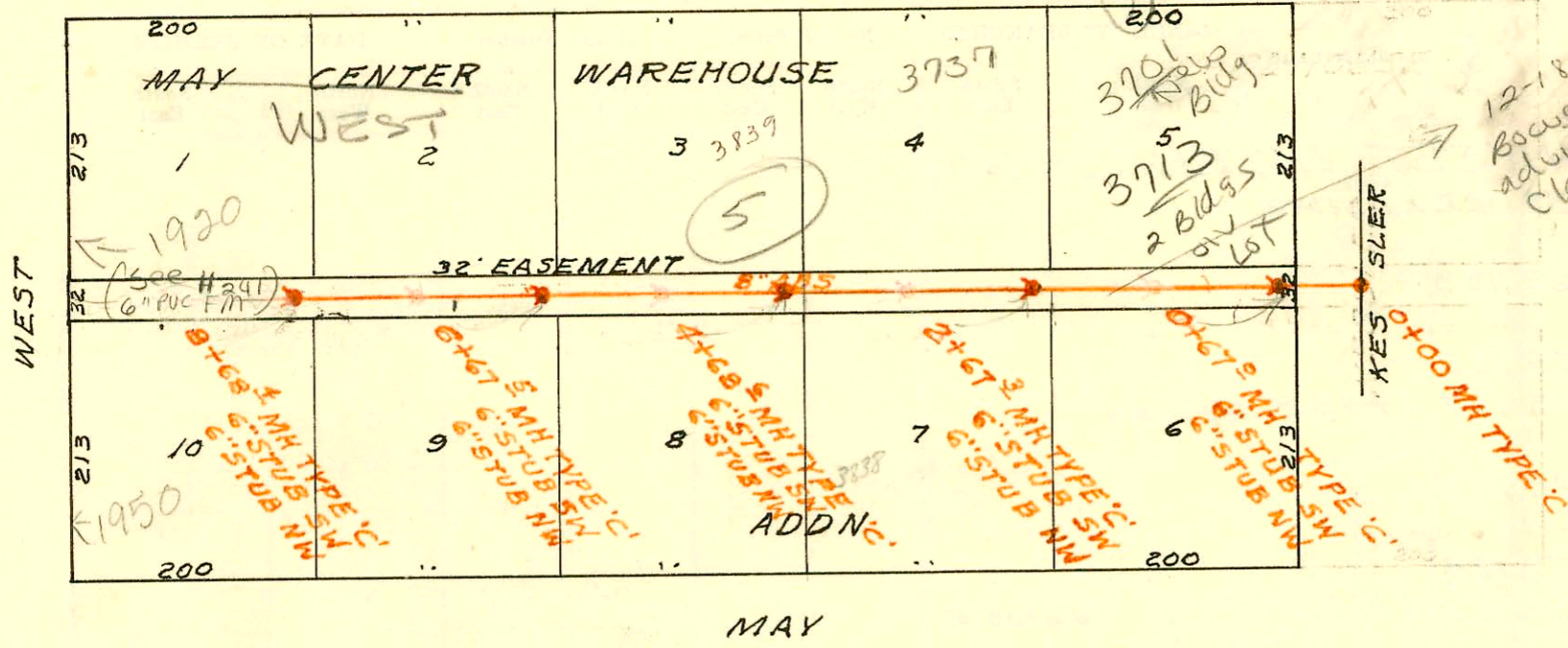


DORA



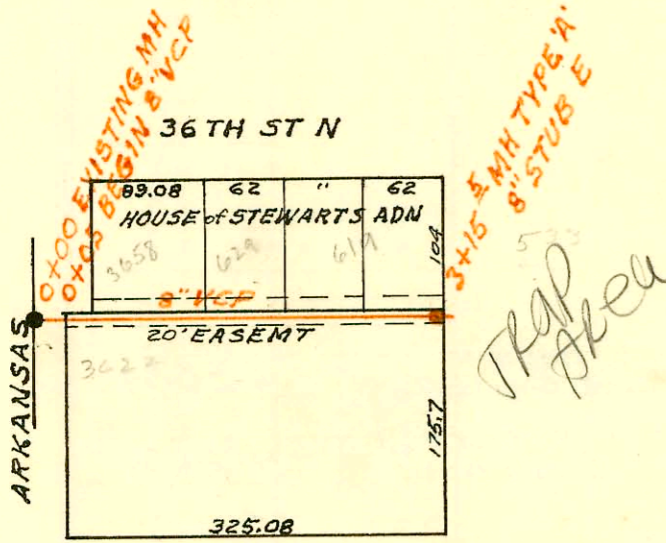
MAY

12-1872
Bowers plg
advised this is
Clay Main.

3-1-94
with pd
sewer equiv
100 sewer
4-14-94

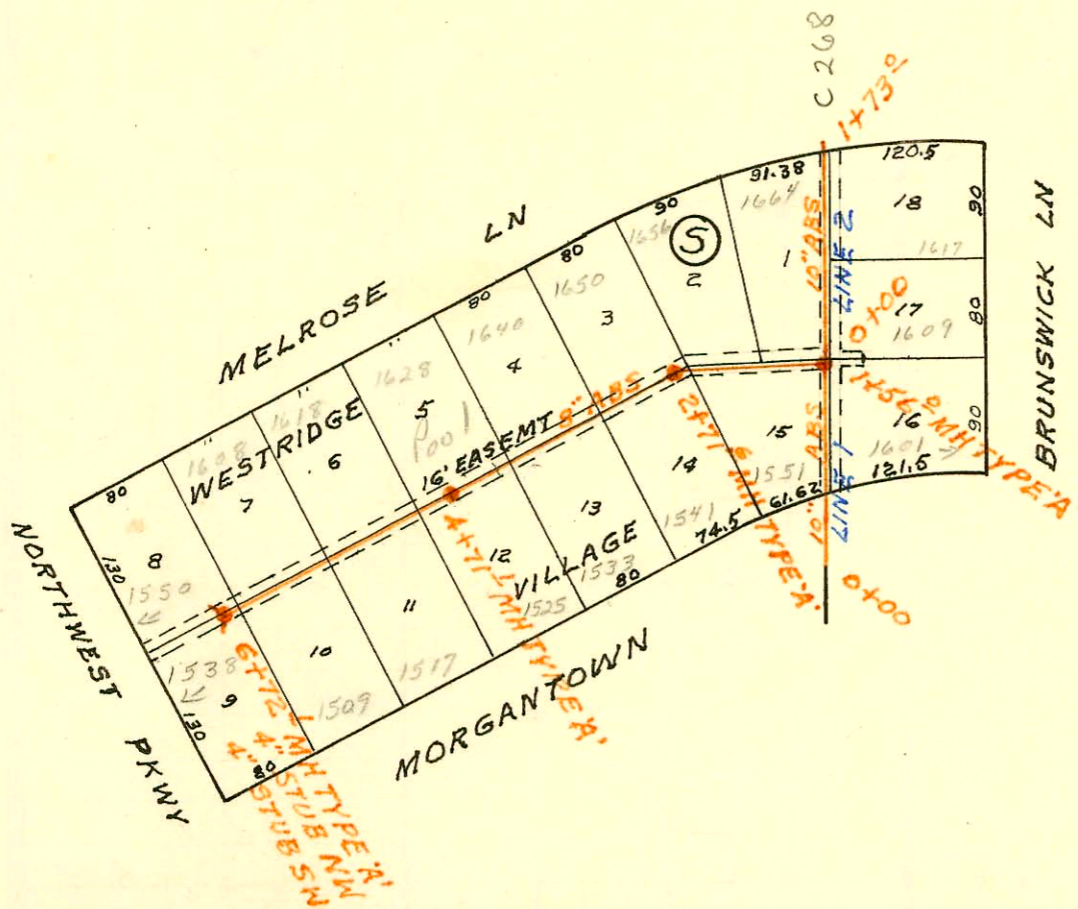
SCALE 1"=150'

SANITARY SEWER TO MAY CENTER WHSE ADD
BUILT BY: UTILITY CONT. INC.
PROJ. N° DBKW 706044
BOOKED 11-1-76 FROM AR 855



SCALE 1"=150'

LATERAL 89 MAIN 4 SS N°23
BUILT BY: W.B. CARTER CONST. CO.
PROJ. N° DBKL 576002
BOOKED 11-3-76 FROM CLG 07



SCALE 1"=150'

LATERAL 78 SOUTHWEST INTERCEPTOR
BUILT BY: UTILITY CONT. INC.
PROJ. N° DBKL 575065
BOOKED 11-3-76 FROM G 4

CONSTRUCTION RECORD

SERVICE RECORD

STATION	ELEVATION		Depth	MANHOLE	4-INCH "Y" BRANCHES		No. of Permit		House Number		DATE OF PERMITS	
	Ground	Grade			North West	South East	North West	South East	North West	South East	North West	South East
SANITARY SEWER TO MAY CENTER WHSE ADDN												
0+00	112.0	101.28	10.7	0+00								
1+00	111.4	103.55	7.9									
	112.3	101.57	10.7	0+67.0	4" SCH 40 6" STUB NW 6" STUB SW		99-11932-7	9457657	see note below 3713 W Dora	3701 Dora	6-3-99	4-22-94
1+00	111.4	101.67	5.7									
2+00	111.4	101.99	5.4									
	112.3	102.20	10.1	2+67.3	4" ABS SCH 40 2" 4" O MAP 6" STUB NW 6" STUB SW			660871	3838 W. Mary			4-28-77
3+00	111.5	102.30	5.2									
					4" SDR 35 5" 26.2 tap		93-10224-7	92-450377	3737 W Dora	3838 W. Mary	5-3-93	12-18-72
4+00	110.7	102.62	4.1									
	112.2	102.83	9.4	4+68.6	4" SDR 35 6" STUB NW 6" STUB SW		92-21618-7		3737 Dora		8-17-92	
5+00	112.2	102.93	5.3									
					4" SDR 35 6" STUB NW 6" STUB SW				3839 Dora		3-17-80	
6+00	113.7	103.25	6.5									
	112.3	103.46	8.8	6+67.5	see below 6" STUB NW 6" STUB SW					1950 S. West		3-30-88
7+00	114.5	103.56	7.0									
8+00	113.8	103.88	6.0									
	112.3	104.09	8.2	8+68.4	7+38.7 6" STUB NW 6" STUB SW		C68111	C72278 59312	1920 S. West	1950 S. West	8-29-78	6-8-79 12-28-76
LATERAL 89 MAIN 4 SAN SEWER N#23												
0+00	129.8	121.63	8.2	0+00	EXISTING							
0+05	129.8	121.63	8.2									
1+00	131.3	121.88	9.4									
2+00	131.5	122.13	9.4									
3+00	131.2	122.38	8.8									
	131.0	122.42	8.6	3+15.5	8" STUB E				619 W. 36th St.		8-2-77	
LATERAL 78 SOUTHWEST INTERCEPTOR												
LINE 1 0+00	141.2	133.00	8.2	0+00	EXISTING							
1+00	140.4	133.30	7.1									
	141.2	133.47	7.7	1+56.0	1+87.2							
		133.93	7.3									
2+00	142.0	134.46	7.5									
	144.7	135.33	9.4	2+71.6	2+35.0							
		135.43	9.3		2+06.8							
3+00	145.7	135.75	10.0									
					2+98.1	3+33.6						
					3+72.4	3+42.1						
4+00	146.9	136.95	10.0									
	148.3	137.79	10.5	4+71.1	4+31.8	4+54.9						
5+00	149.2	138.15	11.1									
					5+07.5	5+29.4						
6+00	150.0	139.35	10.7									
	151.4	140.19	11.2	6+72.1	6+27.1	6+10.1						
LINE 2 0+00	141.2	133.47	7.7	0+00=1+56	LINE 1							
1+00	141.2	133.77	7.4									
1+73.0	141.0	133.99	7.0									

99-11932-7 4/3/99 3713 W Dora Mies Const 4" SCH 40 sewer serves both domestic & muddy oil interceptor. Tied to .6" MH STUB North West

#20369 1950 S. West St 3-30-88 - (Inspector says 125 ft W. of MH ?? 4" PVC 40)
 #93-010229-0701 1617 N. Brunswick - 4/16/93 - 4" SDR 35 - 1/2" gal D.L. made tap 114 ft north of manhole. NOTE: This house must have a sewage ejector. tap @ 1414.0