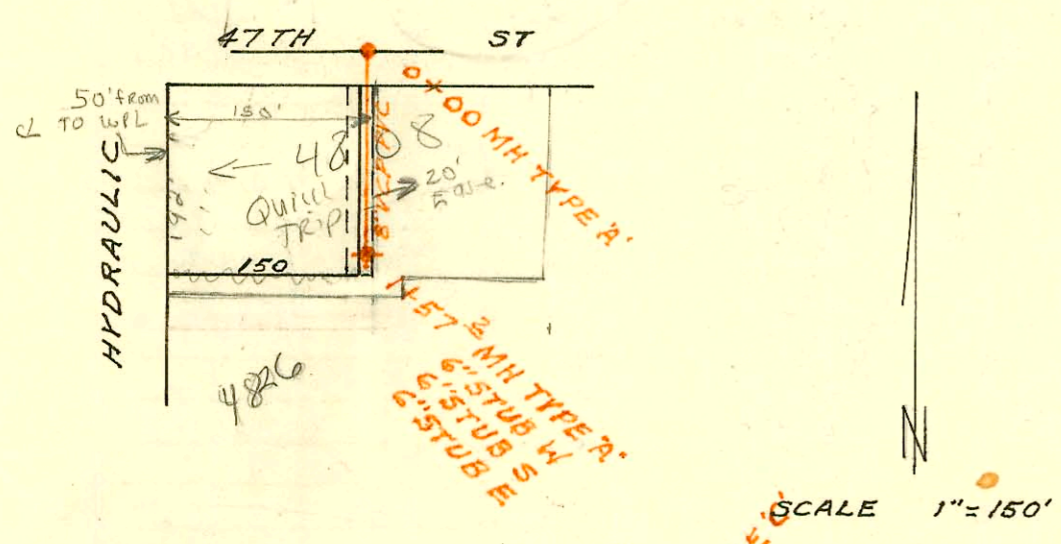
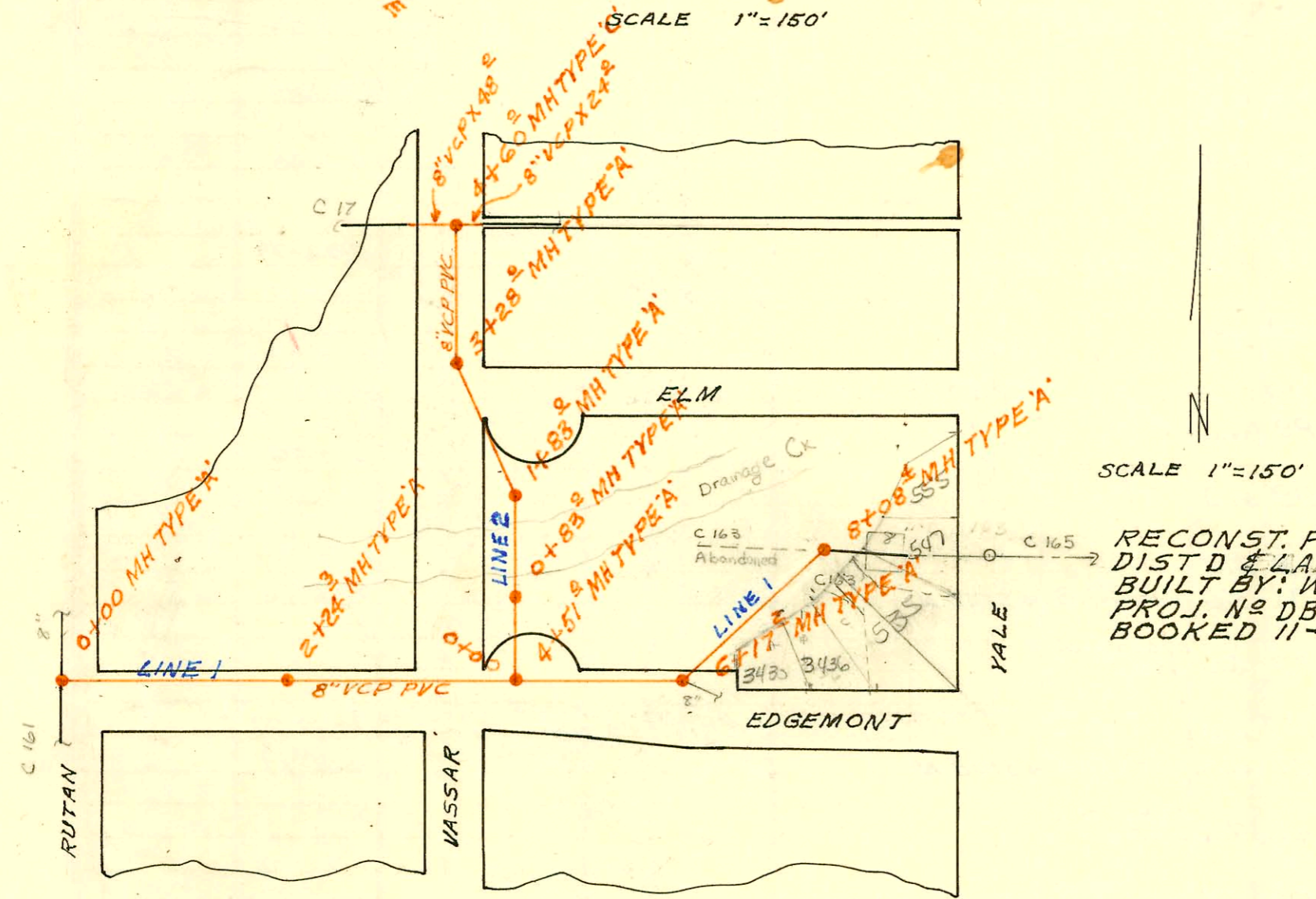


TOWN & COUNTRY MKT SAN SEWER  
BUILT BY: UTILITY CONT. INC.  
PROJ. N<sup>o</sup> DBKW 706052  
BOOKED 11-10-76 FROM DCD 26

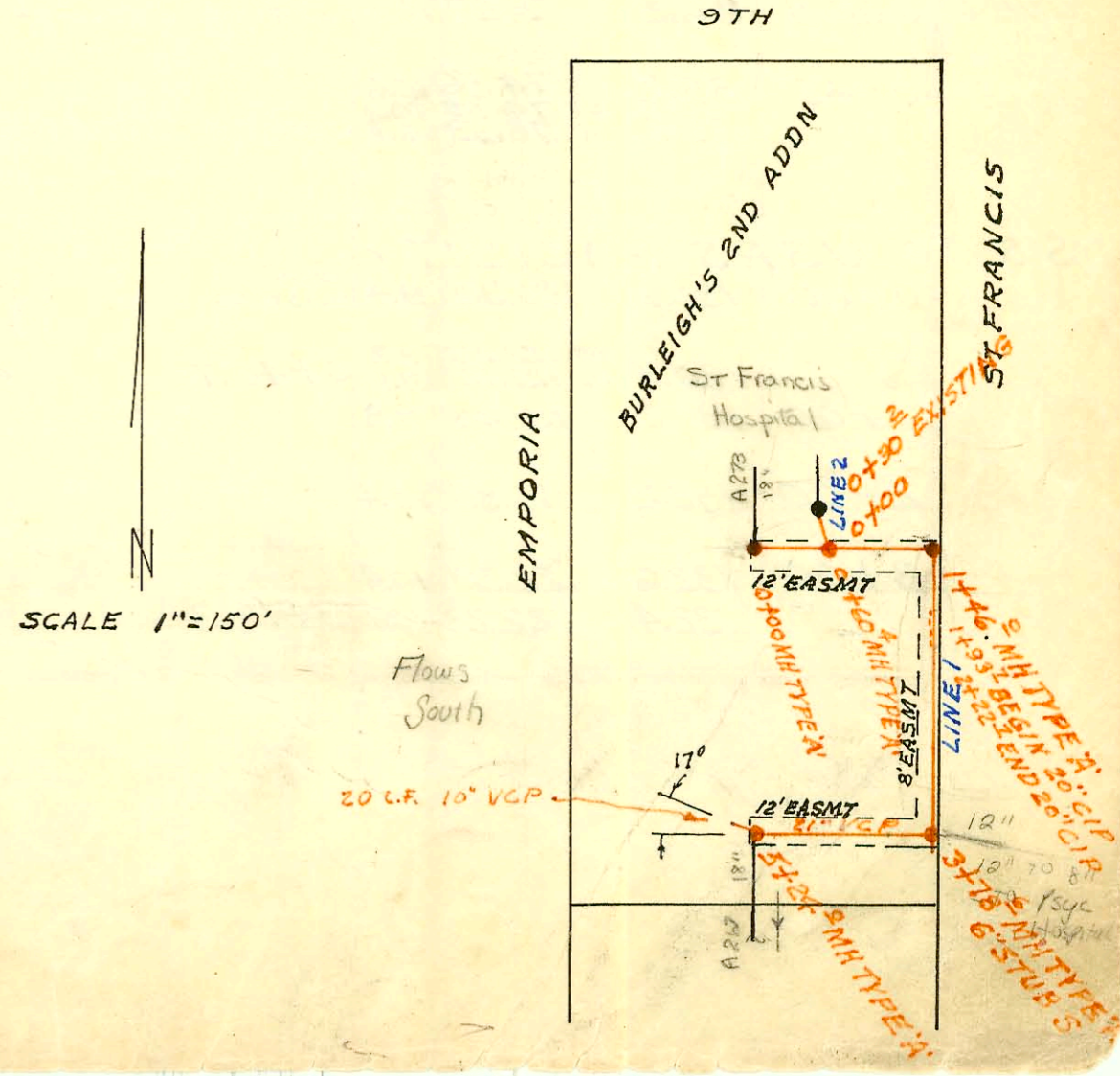


QUIK TRIP SAN SEWER  
BUILT BY: UTILITY CONT. INC.  
PROJ. N<sup>o</sup> DBKW 706047  
BOOKED 11-10-76 FROM DCD 25



RECONST. PORTION DIST D & LAT M  
DIST D & LAT 12 DIST D SAN SEWER N<sup>o</sup> 12  
BUILT BY: WOODSIDE CONST. CO.  
PROJ. N<sup>o</sup> DBKL 575061  
BOOKED 11-12-76 FROM 1H89

RELOCATION ST FRANCIS HOSPITAL SAN SEWER  
BUILT BY: MID STATES CONST. CO.  
PROJ. N<sup>o</sup> DBKW 706016  
BOOKED 11-12-76 FROM DCD 21



CONSTRUCTION RECORD

SERVICE RECORD

STATION	ELEVATION		Depth	MANHOLE	4-INCH "Y" BRANCHES		No. of Permit		House Number		DATE OF PERMITS	
	Ground	Grade			North West	South East	North West	South East	North West	South East	North West	South East
TOWN & COUNTRY MKT SANITARY SEWER												
0+00	87.5	80.40	7.1	0+00		8" ABS S						
1+00	88.9	80.80	8.1									
	88.6	80.93	7.7	1+31.9		4" VCP E 8" ABS S	657822		4003 S. Railroad way			9-27-76
QUIK TRIP SANITARY SEWER												
0+00	83.2	77.02	6.2	0+00								
1+00		78.02										
	84.3	78.59	5.7	1+57.2		6" STUB W 6" STUB E MHT TAP 1+57.2	8126 6256 22520	C7640	1701 E 30 4774 S 20 4808 S. Hydraulic	4826 S. Hydraulic	5-13-83 7-23-82 3-3-84	2-1-80
RECONST. PORTION DIST D & LATM DIST D & LAT 12 DIST D SAN SEWER N°12												
LINE 1 0+00	145.0	135.70	9.3	0+00			667132					6-28-78
1+00	146.0	135.95	10.1									
2+00	147.8	136.20	11.6									
	148.2	136.26	11.9	2+24.3								
3+00	149.0	136.45	12.6									
4+00	149.6	136.70	12.9									
	151.0	136.83	14.2	4+51.0								
		140.15	10.9									
5+00	152.4	140.65	11.8									
6+00	153.3	141.65	11.7									
	153.3	141.80	11.5	6+17.2								
7+00	151.6	142.85	8.8									
8+00	152.1	143.85	8.3									
	152.5	143.96	8.5	8+08.4								
LINE 2 0+00	151.0	137.00	14.0	0+00 = 4+51.0 LINE 1								
1+00	146.8	137.33	9.5	0+83.0								
1+00	147.2	137.40	9.8									
	147.5	137.73	9.8	1+83.0								
		137.85	9.7									
2+00	141.5	138.04	3.5									
3+00	149.3	139.18	10.1									
	150.2	139.50	10.7	3+28.0								
		140.00	10.2									
4+00	150.8	140.83	10.0									
	151.1	141.50	9.6	4+60								
RELOCATION ST FRANCIS HOSPITAL SANITARY SEWER												
LINE 1 0+00	100.8	94.98	5.8	0+00	M.H. Tap 8"		667132					6-28-78
		94.96	5.8	0+60.4								
1+00		94.95										
	101.0	94.94	6.1	1+46.0								
2+00		94.93										
3+00		94.92										
	101.0	94.90	6.1	3+78.6		6" STUB S						
4+00		94.90										
5+00		94.88										
	102.5	94.87	7.6	5+24.0								
LINE 2 0+00	100.8	95.56	5.2	0+00 = 0+60.4 LINE 1 0+30.2 EXIST								

NOTE: FLOW ↓

Note: Elev. shown on Reloc. St. Fr. Hosp. are not City datum

93-709-7 1-1393 1725 E 9th S - Lubbers (6" plastic slo in MHT 1+57.2)  
Note: No record of initial conn. for this address

These connection points do not appear correct  
3/8/91  
R. edd. 2007 R  
OK