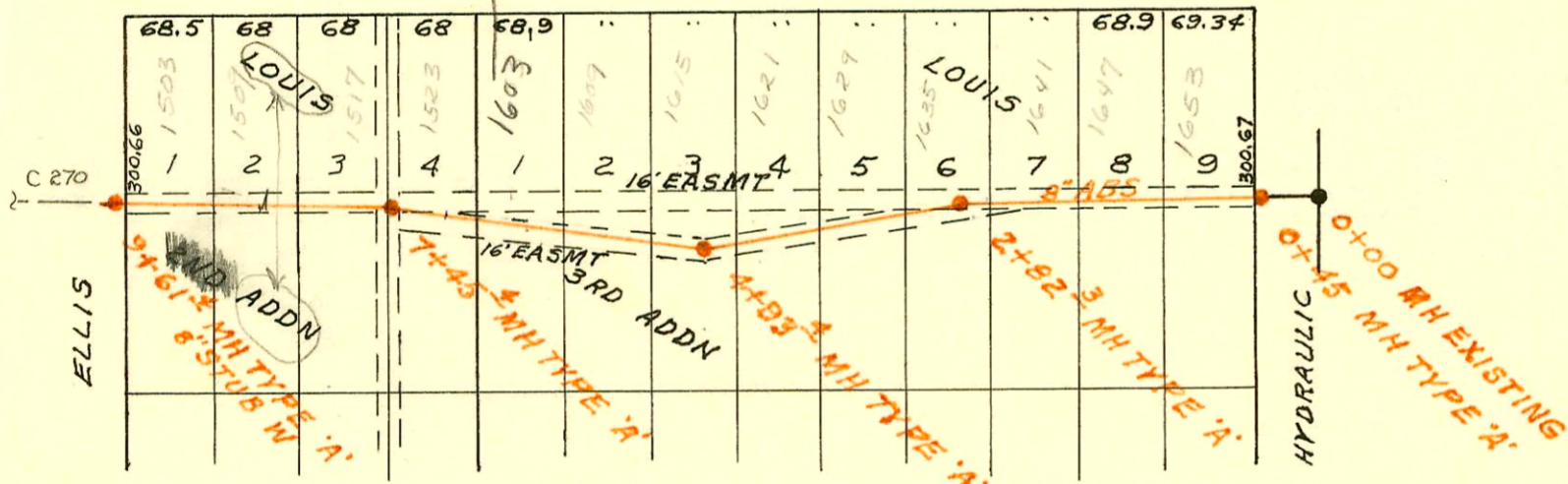


7-40

SCALE 1"=150'

PRESBYTERIAN MANOR APTS SAN SEWER
 BUILT BY: WB CARTER CONST. CO.
 PROJ. N^o DBKW 706035
 BOOKED 12-13-76 FROM DCD 25

NOT Booked
 5/10/89
 See plans 205
 See G-274
 4700
 13TH
 7-21-03
 Need
 in survey
 in order to
 get
 Hold Home Trs
 for local House
 BSR

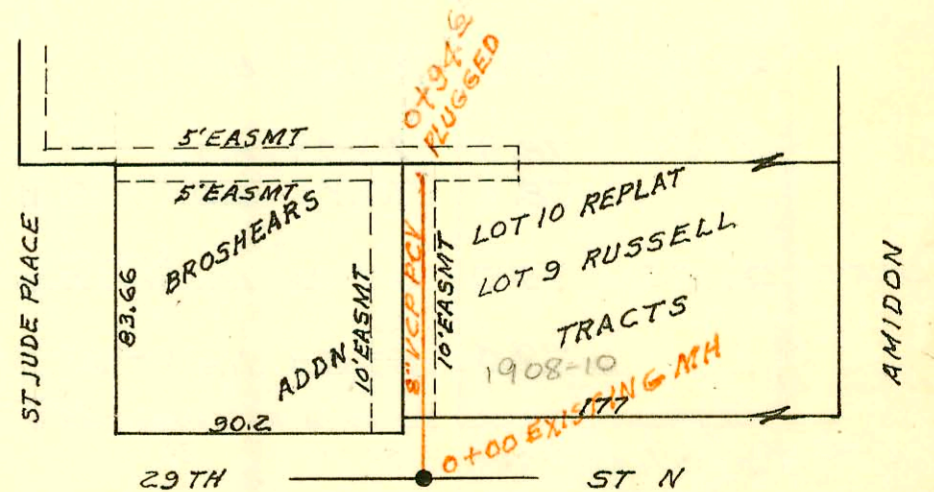


SCALE 1"=150'

Plat Book 9-81

LATERAL 3 MAIN 1 SOUTHWEST INTERCEPTOR
 BUILT BY: UTILITY CONTR. INC.
 PROJ. N^o DBKL 569020
 BOOKED 12-14-76 FROM 1H67

#22
 LATERAL 60 MAIN 17 SS
 BUILT BY: UTILITY CONT. INC.
 PROJ. N^o DBKL 576024
 BOOKED 1-6-77 FROM DCD 37



SCALE 1"=60'

CONSTRUCTION RECORD

SERVICE RECORD

STATION	ELEVATION		Depth	MANHOLE	4-INCH "Y" BRANCHES		No. of Permit		House Number		DATE OF PERMITS	
	Ground	Grade			North West	South East	North West	South East	North West	South East	North West	South East
PRESBYTERIAN MANOR APTS SAN SEWER												
0+00	128.1	112.70	15.4	EXISTING								
						0+90 E						
1+00	128.5	113.10	15.4									
		OUT 113.37 IN 113.47	15.1 15.0	1+65.9	4" STUB N	4" STUB SW						
2+00	128.0	113.60	14.4									
3+00	127.9	114.00	13.9			3+50 NE						
4+00	127.5	114.40	13.1									
		OUT 114.67 IN 114.77	14.8 14.7	4+65.0	4" STUB NW	4" STUB SW						
5+00	127.4	114.90	12.5									
6+00	127.8	115.30	12.5			6+44 NE	6+00 SW					
7+00	129.0	115.70	13.3									
		130.0	14.0	7+33.5	8" STUB NW	8" STUB W						
LATERAL 3 MAIN 1 SOUTHWEST INTERCEPTOR												
0+00	86.0	73.73	12.3	EXISTING								
		OUT 73.80 IN 77.20	11.4 8.0	0+45								
1+00	84.8	77.34	7.5			0+57.6		59037	1653 Selma		12-10-76	
2+00	84.1	77.59	6.5			1+39.5		075085	1647 Selma		10-29-79	
		OUT 77.80 IN 77.90	6.7 6.6	2+82.3		2+06.3		59033	1641 Selma		12-10-76	
						2+90.3		59032	1635 Selma		12-10-76	
						3+46.3		59034	1629 Selma		12-10-76	
3+00	84.7	77.94	6.8			4+32.4		59035	1621 Selma		12-10-76	
4+00	86.4	78.19	8.2									
		OUT 78.43 IN 78.53	9.4 9.3	4+93.4								
5+00	87.8	78.54	9.3			5+01.7 Tap		5081	1615 Selma		5-5-83	
						5+45.4		59030	1609 Selma		12-10-76	
6+00	87.6	78.79	8.8					2001-0318			12-14-01	
						6+33.4		59036	1603 R Selma		12-10-76	
7+00	86.3	79.04	7.3			7+04.4		59103	1523 Selma		12-15-76	
		OUT 79.16 IN 79.26	7.2 7.1	7+45.4				2002-01082			5-31-02	
						4" SCH 40-20		59073	1517 R Selma		12-13-76	
8+00	87.0	79.39	7.6			8+44.4		15725	1509 Selma		3-3-86	
9+00	86.9	79.64	7.3			9+17.4		59031	1493 Selma		12-23-76	
		86.5	6.7	9+61.4	8" STUB W							
LATERAL 60 MAIN 17 55 No 22												
0+00	127.5	117.63	9.9	EXISTING		Tap 0+74.0		071220		1908-10 W. 29th N.		4-13-79
0+94.6	128.0	118.01	10.0									

057871 - 4700 W 13th St 9-9-77-76 stub NE
 057876 - 4700 W 13th St 9-9-77-76 stub SW