

LATERAL 57 WAR INDUSTRIES SEWER
 BUILT BY: WB CARTER CONST. CO.
 PROJ. N° DBKL 576019
 BOOKED 12-14-76 FROM SRL-6

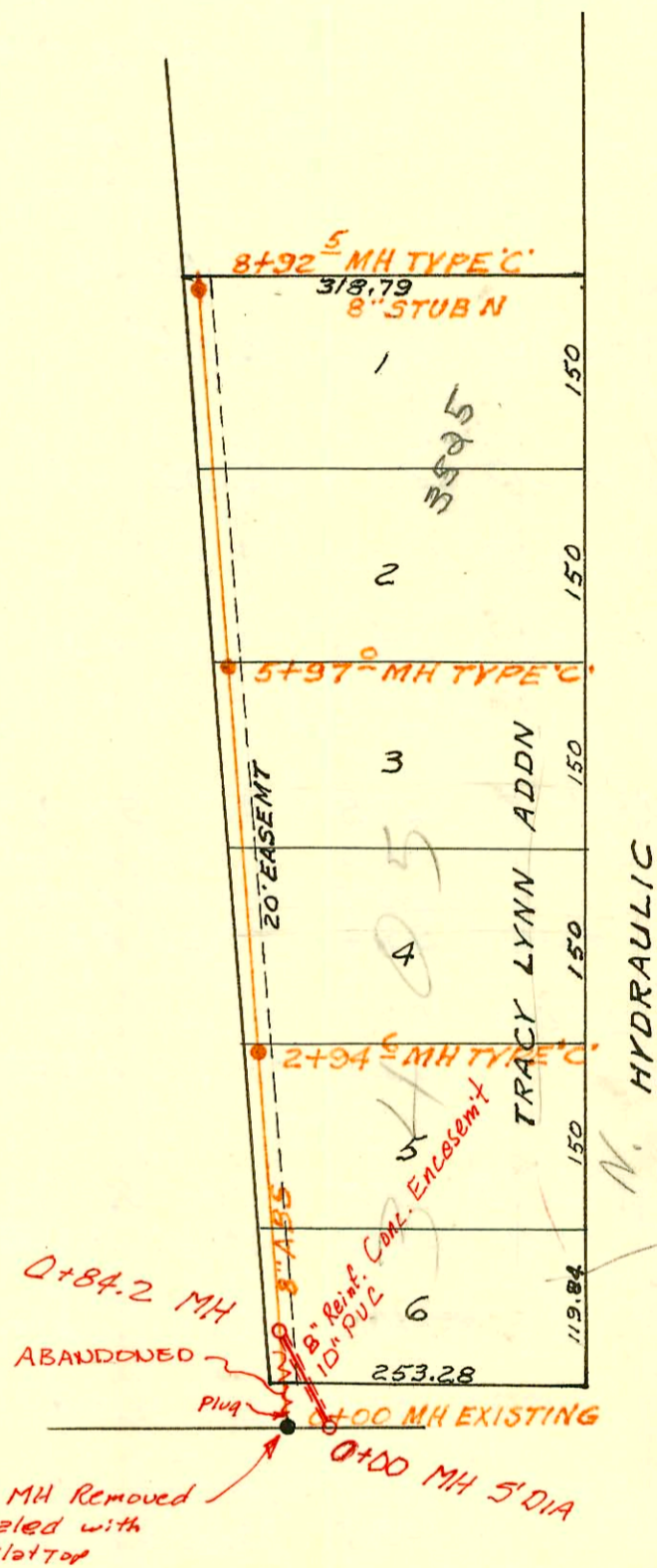
SCALE 1"=150'

LATERAL 82 MAIN 4 S.S. N° 23
 BUILT BY: UTILITY CONTR. INC.
 PROJ. N° DBKL 574051
 BOOKED 1-4-77 FROM 1H 79

2003-01832 7/14/03 Reddi Rocr 3525 Hydraulic
 1-Ferroc, 1H45, 1V22, 1TWIN CO, 1 Parking CO COVER
 4"40 PVC - shallow

SCALE 1"=150'

ADJUSTMENTS OF CITY OWNED UTILITIES
 FOR K-96 BYPASS
 INDEX No. 700021
 Booked 11-13-91 from Plan



LATERAL 33 MAIN I SW I
 BUILT BY: MID STATES CONST. CO.
 PROJ N° DBKL 572064
 BOOKED 1-5-77 FROM 1H88

SCALE 1"=150'

