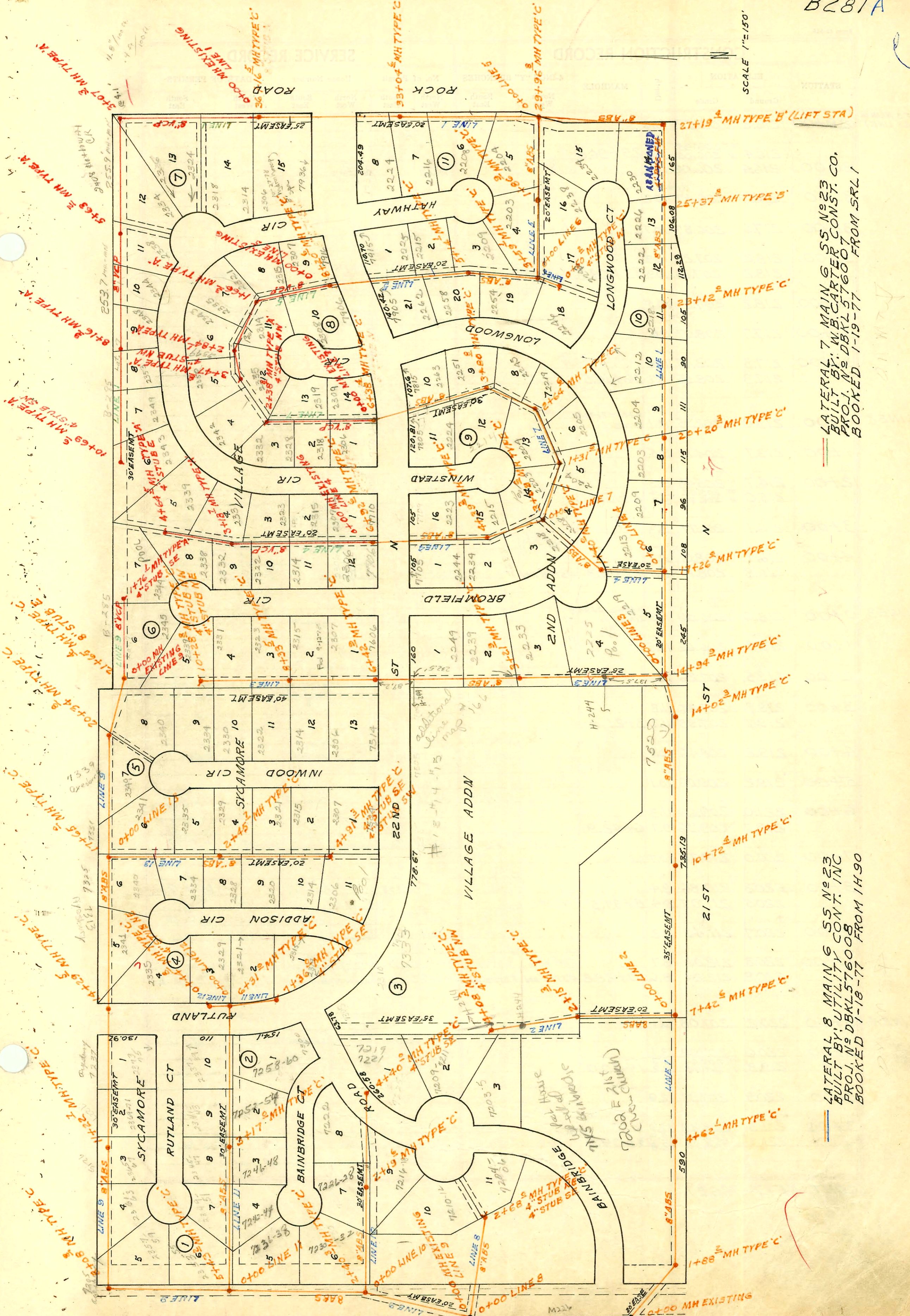


B281A

SCALE 1"=150'



LATERAL 7 MAIN 6 SS N^o23
 BUILT BY: W.B. CARTER CONST. CO.
 PROJ. N^o DBKL576007
 BOOKED 1-19-77 FROM SRL1

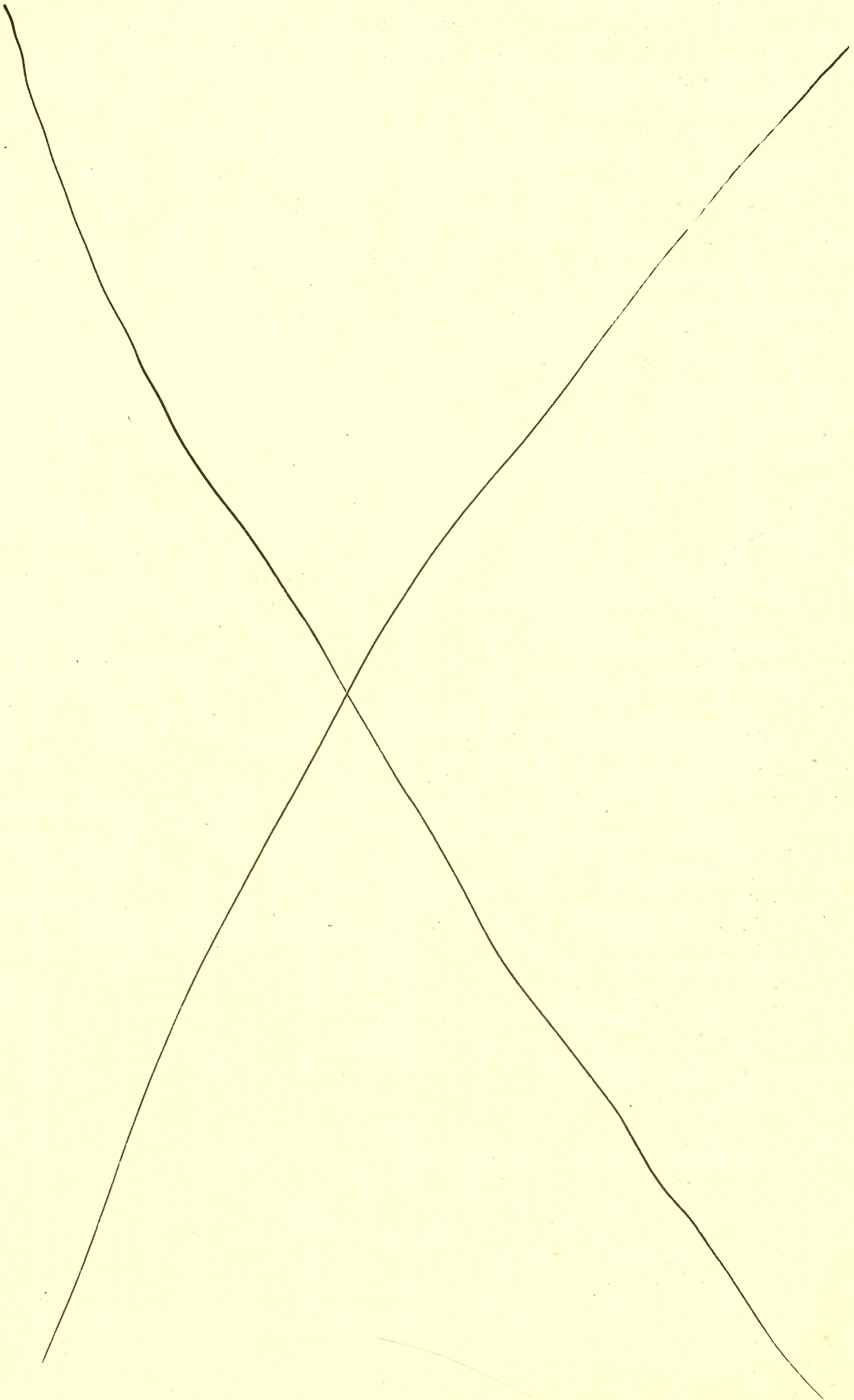
LATERAL 8 MAIN 6 SS N^o23
 BUILT BY: UTILITY CONT. INC
 PROJ. N^o DBKL576008
 BOOKED 1-18-77 FROM 1H90

CONSTRUCTION RECORD

SERVICE RECORD

STATION	ELEVATION		Depth	MANHOLE	4-INCH "Y" BRANCHES		No. of Permit		House Number		DATE OF PERMITS	
	Ground	Grade			North West	South East	North West	South East	North West	South East	North West	South East
LATERAL 8 LINE 1 0+00	209.4	199.78	9.6	SS N ^o 23 EXISTING								
1+00	208.0	200.18	7.8		Tap 1+26.6		C71193		2219 Branford		4-11-79	
2+00	208.0 OUT 200.53 IN 200.63	200.68	7.5 7.4	1+88.2								
3+00	209.0	200.68	8.3									
4+00	210.8	201.08	9.7									
5+00	212.5 OUT 201.68 IN 201.73	201.88	10.8 10.8	4+62.1								
6+00	213.0	201.88	11.1									
7+00	213.6	202.28	11.3		6+44.0 ²		C57549		7115 Branford		9-3-76	
8+00	213.5	202.68	10.8									
9+00	213.0	202.85	10.2	7+42.6								
10+00	212.8	203.08	9.7									
11+00	212.8	203.48	9.3									
12+00	213.0	203.88	9.1									
13+00	210.2	204.17	6.0	10+72.4								
14+00	214.2	204.28	9.9									
15+00	215.7	204.68	11.0									
16+00	216.8	205.08	11.7									
17+00	213.5	205.48	8.0									
18+00	213.5	205.49 205.59	8.0 7.9	14+02.3								
19+00	218.0 OUT 205.96 IN 206.06	206.08	12.0 11.9	14+94.9								
20+00	218.0	206.08	11.9									
21+00	219.6	206.48	13.1									
22+00	220.1	206.88	13.2									
23+00	220.2	206.98	13.2	17+26.0								
24+00	220.6	207.28	13.3	18+64.3			C65614 C64722		2213 Branford 2204 Branford		4-26-78 11-29-77	
25+00	221.0	207.68	13.3									
26+00	221.6	208.08	13.5		Tap 19+83.4		C66455		2203 Branford		5-17-78	
27+00	221.7 OUT 208.16 IN 208.26	208.26	13.5 13.4	20+20.3	Tap 21+03.3		C62563		2204 Branford		8-15-77	
28+00	221.8	208.58	13.2									
29+00	221.3	208.98	12.3		Tap 21+97.3		C64221		3272 Branford		11-29-77	
30+00	220.8	209.38	11.4		Tap 22+37.5		C63881		2218 Branford		11-4-77	
31+00	220.7	209.42	11.3	23+12.0	Tap 23+78.8		C63882		2224 Branford		11-4-77	
32+00	220.2	209.78	10.4									
33+00	219.4	210.18	9.2		Tap 24+47.8		C64371		2226 Branford		7-4-78	
34+00	219.0 OUT 210.32 IN 210.65	210.65	8.7 8.4	25+37.8								
35+00	218.0	209.91	8.1									
36+00	216.2	209.26	6.9									
37+00	216.5 OUT 209.13 IN 209.84	209.84	7.4 11.7	27+19.4 WET WELL	Tap 27+47.4		C66460		2230 Branford		6-1-78	
38+00	216.0	205.17	10.8									

(CONT. NEXT PAGE)



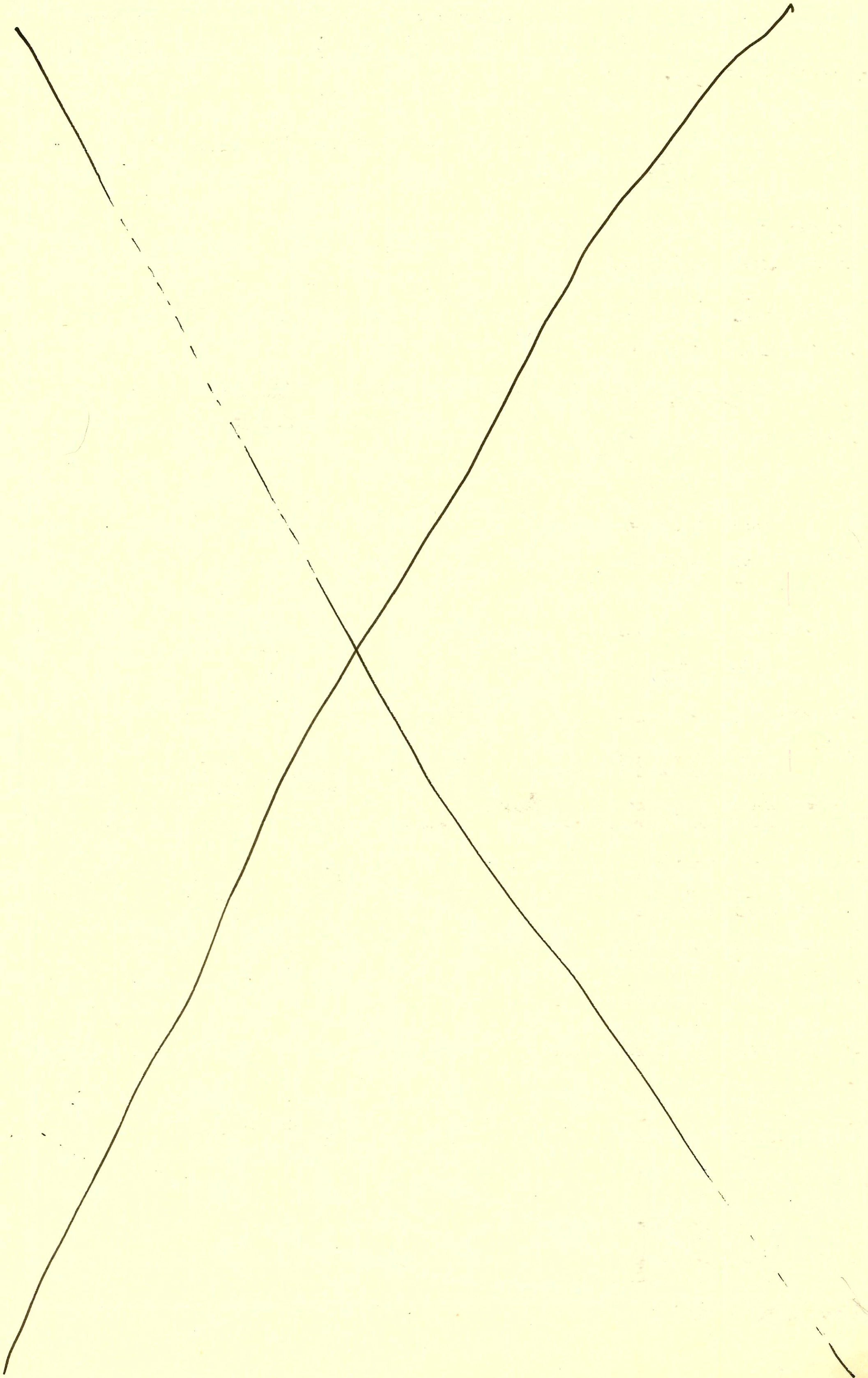
CONSTRUCTION RECORD

SERVICE RECORD

LAT B MAIN G
5523 LINE 1

STATION	ELEVATION		Depth	MANHOLE	4-INCH "Y" BRANCHES		No. of Permit		House Number		DATE OF PERMITS	
	Ground	Grade			North West	South East	North West	South East	North West	South East	North West	South East
29+00	216.2	205.57	10.6									
30.00	216.4	206.06	10.3	29+96.8			C62751		2204 Hathway		8-26-77	
31.00	216.7	206.47	10.2									
32.00	217.6	206.87	10.7		31+93.0		C63160		2208 Hathway		9-21-77	
33.00	218.2	207.27	10.9									
	218.2	207.29	10.9	33+04.6	33+43.2 33+93.6		C68875 C71583		2216 Hathway 2224 Hathway		10-12-78 1-26-79 5-27-79	
34+00	218.2	207.67	10.5									
					35+50.5		C67372		2206 Hathway		7-14-78	
35+00	217.7	208.07	9.6									
36+00	217.3	208.47	8.8									
	217.3	208.56	8.7	36+16.5								
LINE 2 0+00	213.0	202.95	10.1	0+00=7+42.6 LINE 1								
1+00	213.7	204.19	9.5									
2+00	214.7	205.43	9.3									
	215.0	205.62	9.4	2+15.3								
		205.72	9.3									
3+00	216.1	206.77	9.3									
					3+95.3		11996		7203-5 Cambridge		7-11-84	
4+00	216.7	208.01	8.7									
	216.8	208.11	8.7	4+08.3	4" STUB NW		C66911		7209-11 Cambridge		6-19-78	
LINE 3 0+00	218.0	206.06	11.9	0+00=14+94.9 LINE 1								
1+00	219.2	206.66	12.5									
2+00	219.5	207.26	12.2									
					2+26.3		C64190		2233 Bromfield		11-23-77	
3+00	219.7	207.86	11.8									
	219.7	207.98	11.7	3+21.9								
4+00	219.2	208.46	10.7									
					4+16.9		C66511		2239 Bromfield		6-15-78	
5+00	219.2	209.06	10.1									
					5+10.9		C64760		2247 Bromfield		1-6-78	
6+00	221.0	209.66	11.3									
	219.7	209.96	9.7	6+42.9								
					7+23.9		C65816	C68250	2306 Inwood Cr	2307 Bromfield	4-10-78	9-8-78
7+00	220.0	210.26	10.7									
					7+37.5							
8+00	220.3	210.86	9.4									
	220.5	211.07	9.4	8+33.5			C64447	C66938	2314 Inwood Cr	2315 Bromfield	12-14-77	6-20-78
					8+48.1			C66691		2325 Bromfield		6-5-78
9+00	220.7	211.46	9.2									
					9+40.5		C66924		2322 Inwood Cr		6-20-78	
10+00	220.8	212.06	8.7									
	220.8	212.24	8.6	10+28.8	4" STUB NW	4" STUB NE	C66453	C66925	2330 Inwood Cr	2331 Bromfield	6-29-78	6-20-78
					9+36.5			C62381	2334 Inwood Cr	2335 Bromfield	6-20-78	9-15-78
LINE 4 0+00	220.2	207.08	13.1	0+00=17+26 LINE 1								
					0+48.6							
1+00	220.6	207.48	13.1									
	219.9	207.64	12.3		1+15.0							
		207.74	12.2	1+40.0								
2+00	220.9	207.98	12.9									
					0+21.7							
3+00	221.3	208.38	12.9									
	221.3	208.42	12.9	3+09.6								
		208.52	12.8		3+30.6	3+36.6	C66931	C75196	2218 Bromfield	2203 Winsted Cr	6-28-78	12-19-79

(CONT. NEXT PAGE)



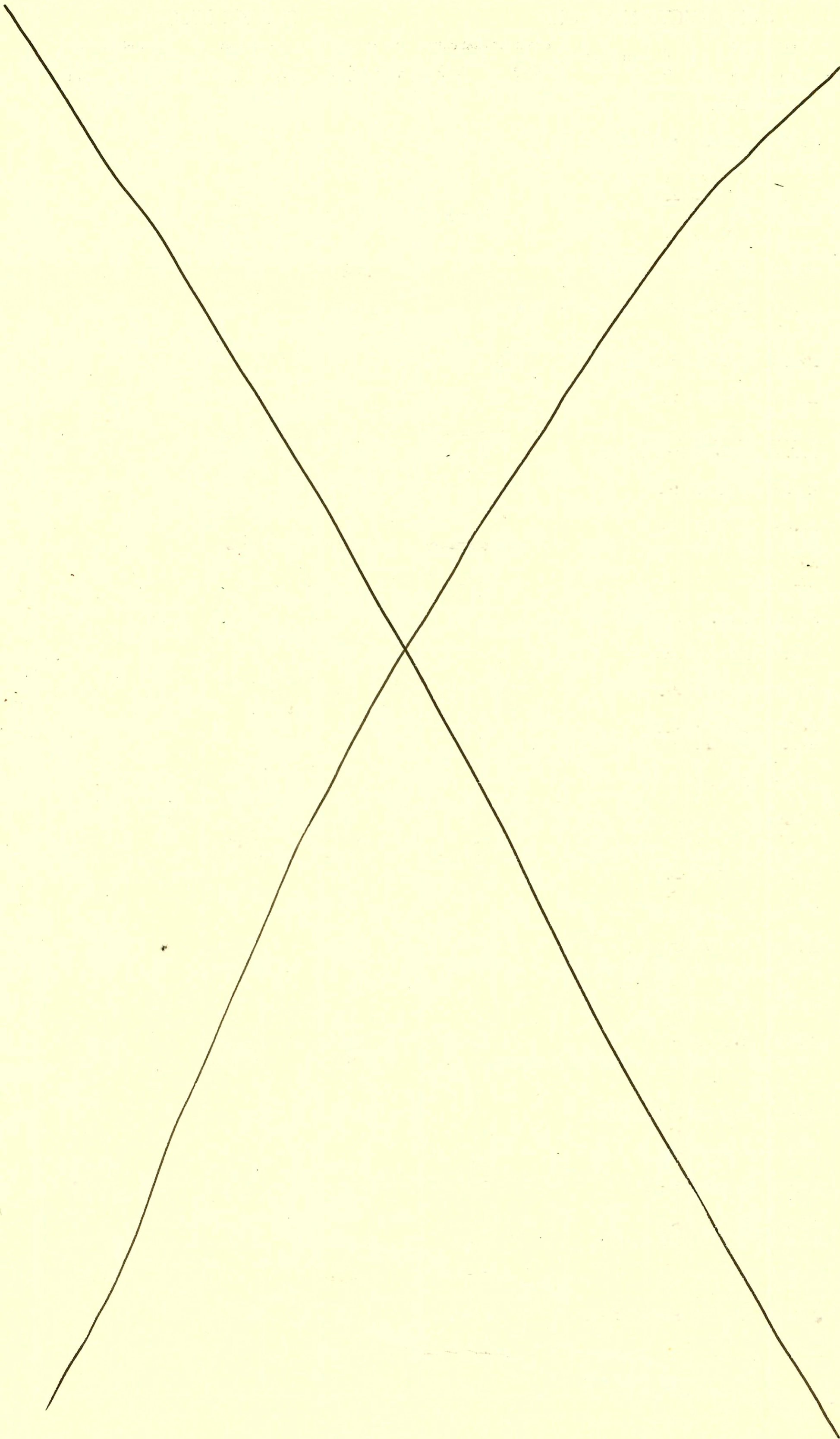
CONSTRUCTION RECORD

SERVICE RECORD

STATION	ELEVATION		Depth	MANHOLE	4-INCH "Y" BRANCHES		No. of Permit		House Number		DATE OF PERMITS			
	Ground	Grade			North West	South East	North West	South East	North West	South East	North West	South East	North West	South East
LATS MARK 5523 LINE 4														
4+00	221.3	209.32	12.0											
	221.8	209.68	12.1	4+39.2	4+49.2			C68166		2215	Winstead Cr.	8-31-78		
5+00	221.5	210.28	11.2					C66510		2234	Brownfield	6-14-78		
				4+61.9	5+71.7			C67369	C71584	2233	Winstead	7-14-78		
6+00	221.6	211.15	10.5											
	221.6	211.98	9.6	6+92.6										
LINE 5														
0+00	216.4	206.05	10.4	0+00=29+96.8 LINE 1										
								C62751		2204	Hathway	10-10-77		
1+00	217.3	206.85	10.5											
				1+13.9										
	218.0	207.55	10.5	1+86.9				C66792		2234	Kongwood Ct	6-13-78		
2+00	218.2	207.65	10.6					C67975		2238	Kongwood Ct	8-22-78		
				2+33.9				C62562		2203	Hathway	8-15-77		
3+00	219.6	208.45	11.2											
				3+59.1				C64548		2242	Kongwood Ct	3-17-78		
	220.3	208.90	11.4					C65561		2254	Kongwood Ct	7-28-78		
4+00	220.2	209.17	11.0											
				4+16.7				C65746		2258	Kongwood Ct	4-6-78		
5+00	219.3	209.57	9.7											
	219.0	209.63	9.4	5+14.1				C62943		2209	Hathway	9-21-77		
		209.73	9.3					C62945		2215	Hathway	9-8-77		
6+00	219.2	210.07	9.1											
				6+91.1	6+97.9			C66512	C63161	2262	Kongwood	5-22-78		
7+00	218.8	210.47	8.3											
8+00	218.7	210.87	7.8											
	218.5	210.95	7.6	8+20.6										
LINE 6														
0+00	220.3	209.00	11.3	0+00=3+59.1 LINE 5										
								C65411		2246	Kongwood	5-10-78		
	220.3	209.20	11.1	0+50.2	4" STUB W									
LINE 7														
0+00	221.3	208.52	12.8	0+00=3+09.6 LINE 4										
										2205	Brownfield Cr.	5-17-78		
1+00	221.6	208.92	12.7											
	221.7	209.04	12.7	1+31.6				C68382		2204	Brownfield	9-15-78		
		209.14	12.6					C66690		2205	Kongwood Cr.	6-5-78		
2+00	221.6	209.42	12.2					C70753		2204	Winstead	3-20-79		
	221.5	209.68	11.8	2+64.6				C69150		2219	Kongwood	10-30-78		
		209.78	11.7											
3+00	221.5	209.92	11.6											
				3+80.8				C66088		2245	Kongwood Cr.	4-26-78		
	221.5	210.24	11.3					C66089		2251	Kongwood Cr.	4-26-78		
4+00	221.5	210.32	11.2					C68383	C67289	2214	Winstead	9-15-78		
				4+19.0	5+12.3					2263	Kongwood Cr.	7-11-78		
5+00	222.5	210.72	11.8					C67971		2204	Winstead	8-22-78		
				5+22.9										
6+00	222.3	211.72	11.2											
	221.5	211.27	10.2	6+38.4										
LINE 8														
0+00	210.0	201.42	8.6	0+00= EXISTING										
1+00	211.0	201.82	9.2											
2+00	211.6	202.22	9.4					10026		7210-12	Bainbridge			
	212.0	202.50	9.5	2+68.0	4" STUB NE 4" STUB SE			C75008		7204-06	Bainbridge	10-22-79		
LINE 9														
0+00	210.0	201.42	8.6	0+00= EXISTING										
1+00	210.2	201.80	8.4											
2+00	210.9	202.18	8.7											
	211.1	202.32	8.8	2+40.3										
		202.42	8.7											

(CONT. NEXT PAGE)

B284A



SWR 2001-02985 4/26/01-2408 N HATHWAY CIR- Roto- installed Fernco clamp @ foundation wall
where Bid drain + sewer had seperated

CONSTRUCTION RECORD

SERVICE RECORD

STATION	ELEVATION		Depth	MANHOLE	4-INCH "Y" BRANCHES		No. of Permit		House Number		DATE OF PERMITS			
	Ground	Grade			North West	South East	North West	South East	North West	South East	North West	South East	North West	South East
LAT 8 MAIN 6 SS 23 LINE 11	5+00	216.0	208.14	7.9		5+19		C59858		2337-39 Rutland Ct.		2-10-77		
	6+00	217.0 216.5	209.02 OUT 209.36 IN 209.46	8.0 7.1 7.0	6+31.0	7+07		C68942		2321 Addison Cr.		10-16-78		
	7+00	217.7 216.8	209.66 209.80	8.0 7.0	7+36.0	4" STUB SE		C68943		2315 Addison Cr.		10-16-78		
LINE 12	0+00	216.5	209.38	7.1	0+00 = 6+31 LINE 11									
		216.3	209.56	6.7	0+44.8	4" STUB NE		C68941		2329 Addison Cr.		10-16-78		
LINE 13	0+00	220.4	208.76	11.6	0+00 = 17+65 LINE 9									
	1+00	220.0	209.16	10.8		1+49.8	1+05.2	C68215 C69154		2341 Addison Inwood Cr.		4-20-78 10-30-78		
	2+00	219.6 219.5	209.56 209.74	10.0 9.8	2+45.7	2+16.1 2+64.5		C67892 C69850		2335 Inwood Cr. 2327 Inwood		8-16-78 12-18-78		
	3+00	219.2	209.96	9.2		3+70.7 3+54.7 4+41.3	3+58.4 4+36.3	C68897 C67199 C69153	C68740 C68757	2320 Addison 2314 Addison	2321 Inwood	10-13-78 6-30-78 10-30-78		
	4+00	219.2 219.6	210.36 210.72	8.8 8.9	4+91.3	4" STUB SW	4" STUB SE	C68165 C67974		2306 Addison	2307 Inwood	8-31-78 8-22-78		
LATERAL 7 MAIN 6 SS N ^o 23 LINE 1	0+00	217.3	208.60	8.7	0+00 EXISTING	1+10		C66692		2318 Hathway		8-20 6-5-78		
	1+00	216.0	209.00	7.0		1+99.3		C66459		2326 Hathway		5-17-78		
	2+00	215.3	209.40	5.9										
	3+00	214.0	209.79 OUT 209.82 IN 209.92	4.2 4.2 4.7	3+07.3									
	4+00	214.0	210.30	3.7										
	5+00	214.8	210.70	4.1		4+83.7 4+30.09		C67973		2334 Hathway see next		8-22-78 12-5-80		
	6+00	215.5 215.9	210.94 211.10	4.6 4.8	5+63.2	5+97.26 6+68.0		C69103 C67174		2338 Hathway 2344 Hathway		10-26-78 6-30-78		
	7+00	217.0	211.50	5.5		7+54.4		C68253 C68167		2348 Hathway 2353 Winsted Cr.		9-8-78 8-31-78		
	8+00	218.0 218.3	211.90 211.96	6.0 6.4	8+16.9	8+47.2								
	9+00	219.7	212.30	7.4										
	10+00	220.4 220.8	212.70 212.96	7.7 7.8	10+69.6	4" STUB SW		C6928 C64191		2342 Winsted 2343 Winsted		6-20-78 11-23-77		
LINE 4	0+00	221.6	212.08	9.5	0+00 EXISTING									
	1+00	222.0	212.48	9.5										
	2+00	222.1	212.88	9.2		2+29.7	2+32.2	C66935 C69810		2322 Bromfield	2315 Winsted Cr.	6-20-78 12-20-78		
	3+00	222.1 222.0	213.28 OUT 213.32 IN 213.42	8.8 8.7 8.6	3+13.7	3+93.1 3+62.7		C66939 C68252 C66939		2332 Bromfield 2332 Bromfield	2331 Winsted	6-20-78 9-8-78 6-20-78		
	4+00	222.0	213.78	8.2		4+35.5		C6930		2338 Bromfield	2339 Winsted	6-20-78 12-18-78		
		222.0	214.02	8.0	4+64.5	4" STUB E		C6951						

(CONT NEXT PAGE)

CONSTRUCTION RECORD

SERVICE RECORD

STATION	ELEVATION		Depth	MANHOLE	4-INCH "Y" BRANCHES		No. of Permit		House Number		DATE OF PERMITS			
	Ground	Grade			North West	South East	North West	South East	North West	South East	North West	South East	North West	South East
LAT 7 MAIN 6 5523 LINE 5	0+00	218.5	211.08	7.4	0+00 EXISTING									
	1+00	218.2	211.48	6.7										
	2+00	218.0 OUT 211.74 IN 211.84	211.98	6.3 6.2	1+66.3									
	3+00	219.0 OUT 212.30 IN 212.40	212.48	6.7 6.6	2+84.1									
		220.2	212.66	7.5	3+47.8	4" STUB NW								
LINE 7	0+00	221.5	211.47	10.0	0+00 EXISTING									
	1+00	220.9	211.87	9.0										
	2+00	221.9	212.27	9.6										
		221.8	212.44	9.4	2+38.8									
LINE 9	0+00	221.3	212.86	8.4	0+00 EXISTING									
	1+00	221.6	213.26	8.3										
		221.5	213.56	7.9	1+76.1	4" STUB SE								
LATERAL 54 SOUTHWEST INTERCERTOR														
	0+00	143.2	130.00	13.2	0+00									
	1+00	143.4	130.19	13.2										
	2+00	143.0	130.50	12.5										
	3+00	143.3	130.70	12.6										
		143.3	130.81	12.5	3+09.0									
	4+00	143.4	130.99	12.4										
	5+00	143.0	131.19	11.8										
	6+01.2	143.0	131.39	11.6	6+01.2									
	7+00	143.2	131.59	11.6										
	8+00	142.9	131.79	11.1										
	9+00	142.8	131.97	10.8	8+89.9									
	10+00	142.4	132.19	10.2										
	11+00	142.5	132.39	10.1										
	12+00	142.5	132.55	10.0	11+79.3									
	13+00	142.6	132.79	9.8										
	14+00	142.2	132.99	9.2										
		142.5	133.10	9.4	14+57.6	4" STUB NW								

2000-02399- 1/2" 100 - Three R - 600 S. Tyler Rd #222 (side Pockets) 4" SCH 40 - installed 2-1000 grease interceptors
 25' from main "SCH 40 - 1-1/2" way CO, 11W10 CO, 11U45, 4H45 (Between with STN 4946-174 and 4946-173)
 (3+09) (1+03.8)