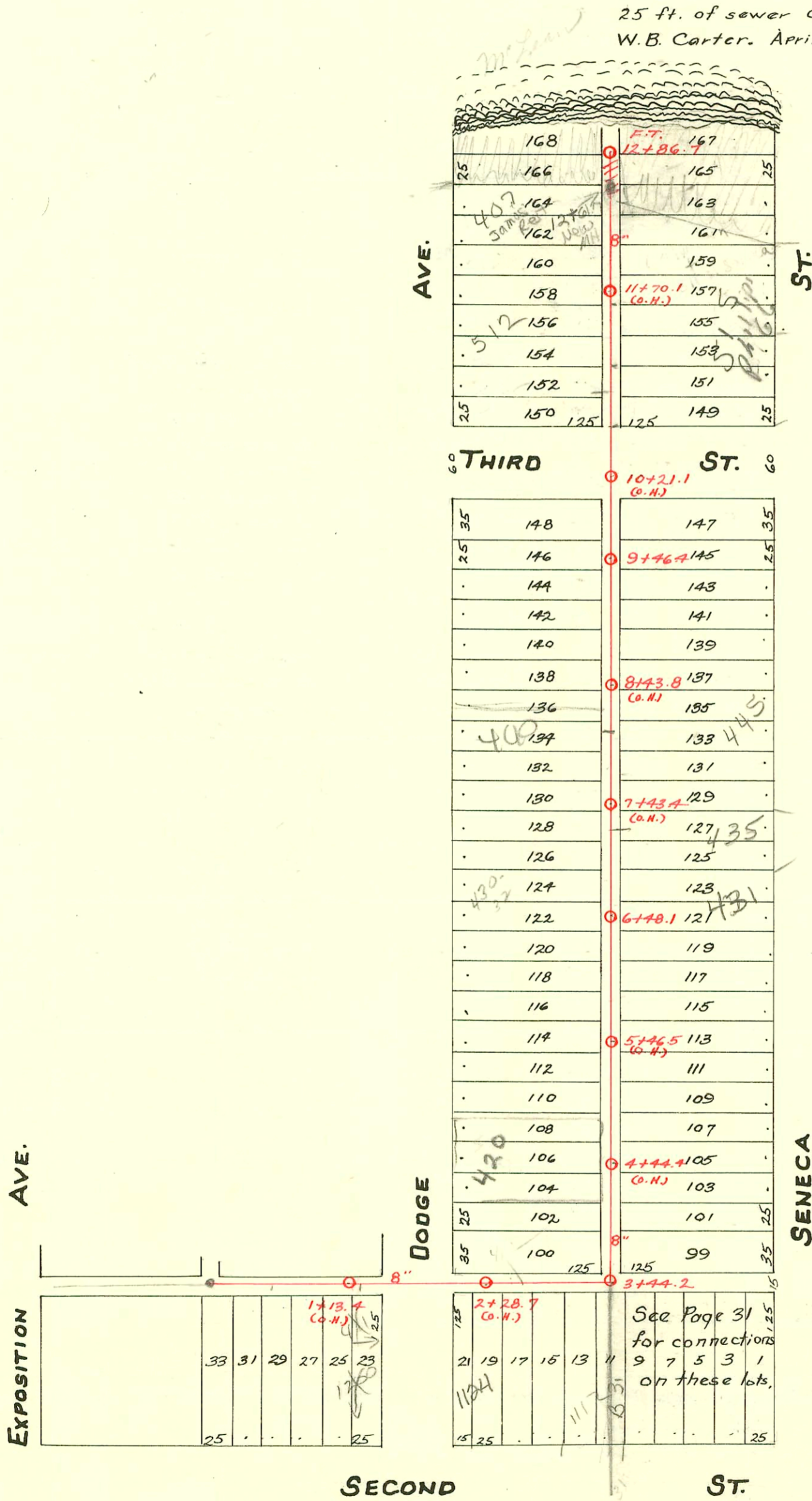


S.S.No. 8 - 1908

25 ft. of sewer cut off by  
W.B. Carter. April 19, 1954.



SWR2006-03343 - 1204 W 2<sup>nd</sup> St, Uelpan, 50.5' E y MH - Procter King 11/3/07

### CONSTRUCTION RECORD

### SERVICE RECORD

STATION	ELEVATION		Depth	MANHOLE	4-INCH "Y" BRANCHES		No. of Permit		House Number		DATE OF PERMITS	
	Ground	Grade			North West	South East	North West	South East	North West	South East	North West	South East
12+84.8	111.00	108.69	2.91	12+86.7 F.T. (new MH)	12+81	12+78.5						
12+44.8	111.74	108.57	3.17	12+61.7	12+65	12+60.5	#1083 #1666		512 N. Dodge McLean		9-30-48 6-16-52	
12					12+37.5	12+35						
					12+12.5	12+10						
11+44.8	112.75	108.42	4.33		11+88.5	11+86	#176781		514-516 N. Dodge		3-11-80	
11					11+62.5	11+60	#519 #1084 #374		511 N. Seneca 509 N. Seneca 512 N. Dodge		9-24-51 3-21-24 9-30-48 3-4-24	10-24-90 12-5-24
10	111.92	108.27	3.65		10+60	10+57	#28		501 N. Seneca 515 N. Seneca		4-17-33	10-24-90 11-01-90
9+44.8	109.58	108.12	1.46	9+46.4	9+80	9+77.5	#375				3-4-24	
9					9+54.5	9+52	#288				2-25-24	
					9+26.5	9+24	#1787	#597			12-6-23	7-1-11
					9+00.5		#567				3-27-24	
						8+98		#817	451 N. Seneca			9-25-26
8+44.8	113.01	107.97	5.04		8+75	8+72.5						
8					8+49	8+46.5		#534				3-24-24
					8+26.5	8+24						
					8+00		#1731				12-20-22	
						7+97.5		26327	438 N. Dodge	445 N. Seneca		10-16-90
7+44.8	112.38	107.82	4.56		7+74.5	7+72	#535	#461			6-27-27	3-12-24
7					7+49	7+46.5						
					7+23.5	7+21		#226				2-18-24
					7+01		#1083					5-12-24
						6+98.5		63155	430 N. Dodge		7-21-97	
6+44.8	111.30	107.67	3.63	6+48.1	6+75.5	6+73	#1609	#178		431 N. Seneca	7-12-24	11-26-02 3-30-10
6					6+43.5	6+41	#925	#491			4-23-24	5-12-22
					5+95	5+92.5						
					5+68.5	5+66						
5	110.80	107.52	3.28		5+44	5+41.5	#290	#225			2-25-24	2-18-24
					5+13.5	5+11		#229				2-18-24
					4+88.5	4+86	#160		422 N. Dodge		11-21-47	
					4+62.5	4+60	#680				4-4-24	
4	110.49	107.37	3.12		4+39	4+36.5		#1108				5-14-24
					4+13.5	4+11	5387					
					3+88	3+85.5		9710			10-2-57	12-1-93
3	110.97	107.22	3.75	3+44.2	3+62	3+59.5	#1228	#152	412 N. Dodge		5-28-24	4-17-12
	110.28	107.17	3.11			3+25						
						2+98.5						
						2+75.5						
						2+50		2003-0300		1124 W R 2nd		11-17-03 6-30-22
2	109.96	107.07	2.87		2+24	2+24		#758				
					2+00.5	1+29.5						
1	109.43	106.97	2.46		1+24			#232				2-19-22
					0+98							
					0+73							
					0+49			#344				7-14-15
					0+24.5							
0				0+0	0+05							

SUR 2005-00358 21705 1200 W 2nd NLC Brand phy.

99-67660-7 4/15/99 1202 W 2nd - sta w/ concrete 10' from house - sewer goes under another structure

99-00722 9-21-99 4" N Dodge Mills

CS164-435 Seneca - Gerald Thompson - 5-6-61 (top 7+31.1)

#2708 - Top at 11+77.5 - 512 N. Dodge - 9-27-40 - A & A. Pibq. 03036 used old conn. 512 N. Dodge - Dick Turnbull 4-6-65 (11+67.7) trailer  
 #1104 - Top - 428 N. Dodge - 9-28-43 - Harley Riggs  
 #1799 - 1801-1802-1803-1804-1805-1806 - Private line connections - 512 N. Dodge - Tourist Camp - 12-23-48 - Tess Hanna  
 #324 - Tap - 409 N. Seneca - 3-13-52 - C.G. Coleman  
 #5012 - 6 on 8 wye - 1101 McLean Blvd. - Self Pibq. - 4-29-53  
 11431 Tap - 512 N. Dodge - Turnbull 4-16-59  
 B-105 Tap - private conn. 512 N. Dodge - Dick Turnbull 9-5-63  
 B-598 - 451 N. Seneca - 12-20-63 Bradford Pibq. - Top (8+90.4)