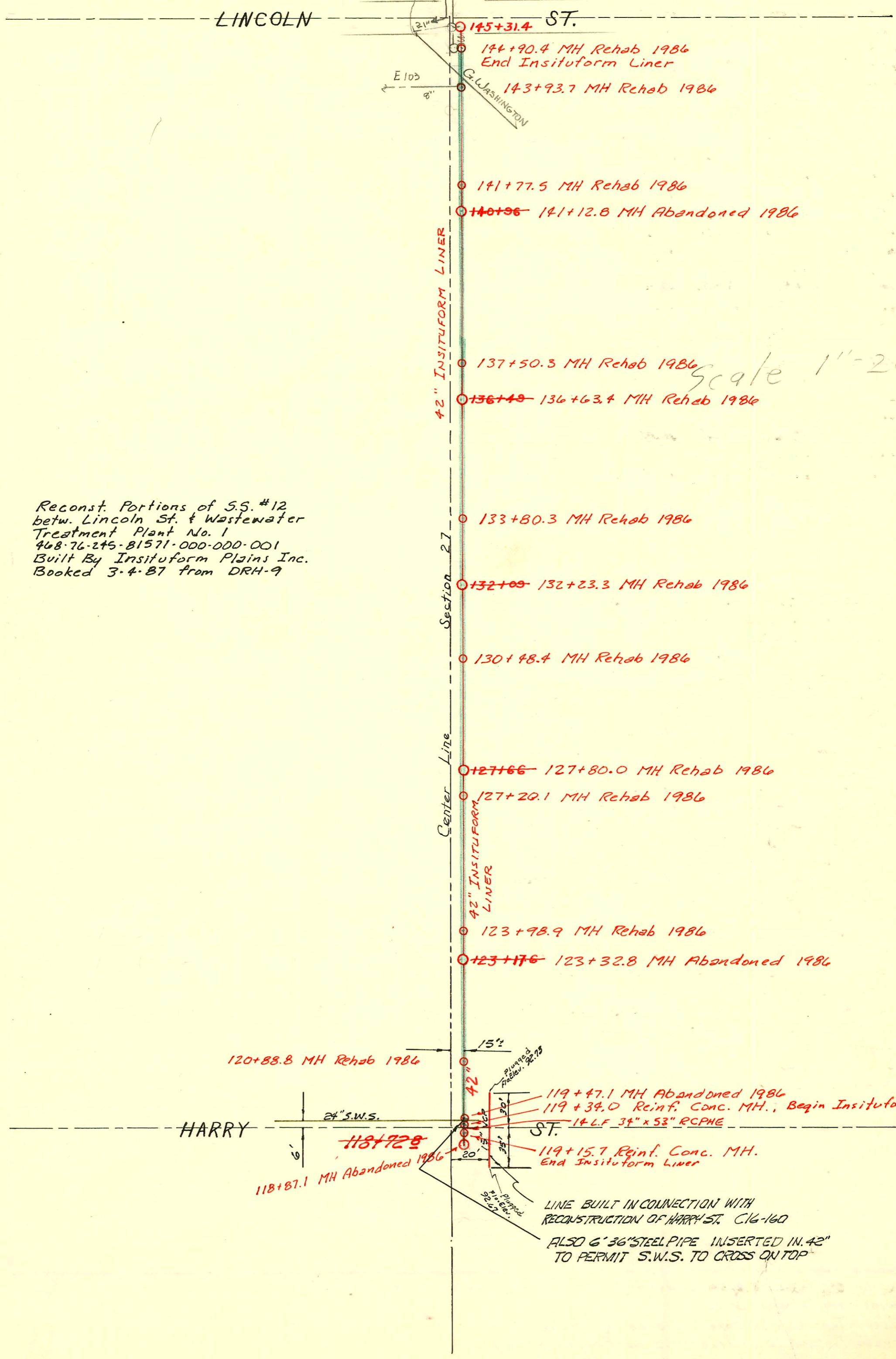


145+31
113+92
124+59

Relocated Section See Pg J170A
Page 6



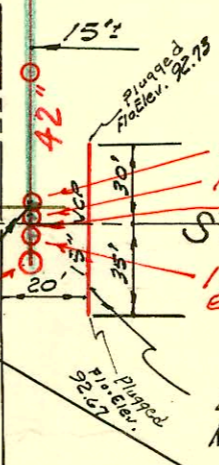
Reconst. Portions of S.S. #12
 betw. Lincoln St. & Wastewater
 Treatment Plant No. 1
 468-76-245-81571-000-000-001
 Built By Insituform Plains Inc.
 Booked 3-4-87 from DRH-9

Scale 1"=200'

HARRY

120+88.8 MH Rehab 1986

118+92.8
 118+87.1 MH Abandoned 1986



119+47.1 MH Abandoned 1986
 119+34.0 Reinf. Conc. MH., Begin Insituform Liner
 14 L.F. 34" x 53" RCPHE
 119+15.7 Reinf. Conc. MH.
 End Insituform Liner

LINE BUILT IN CONNECTION WITH
 RECONSTRUCTION OF HARRY ST. C16-160
 ALSO 6' 36\"/>

CONSTRUCTION RECORD						SERVICE RECORD						
STATION	ELEVATION		Depth	MANHOLE	4-INCH "Y" BRANCHES		No. of Permit		House Number		DATE OF PERMITS	
	Ground	Grade			North West	South East	North West	South East	North West	South East	North West	South East
118	102.0	90.43	11.57	+72.8								
119	102.1	90.53	11.57									
120	102.2	90.63	11.57									
121	102.6	90.73	11.87									
122	103.0	90.83	12.17									
123	103.0	90.93	12.07	+17.6								
124	103.2	91.03	12.17									
125	103.2	91.13	12.07									
126	103.0	91.23	11.77									
127	103.1	91.33	11.77	+66								
128	103.6	91.43	12.17									
129	103.8	91.53	12.27									
130	103.6	91.63	11.97									
131	103.4	91.73	11.67									
132	103.0	91.83	11.17	+09								
133	103.6	91.93	11.67									
134	103.0	92.03	10.97									
135	102.6	92.13	10.47									
136	103.2	92.23	10.97	+49								
137	103.1	92.23	10.77									
138	103.2	92.43	10.77									
139	103.1	92.53	10.57									
140	104.0	92.63	10.37	+96								
141	103.8	92.73	11.07									
142	103.6	92.83	10.77									
143	103.8	92.93	10.87									
144	103.8	93.03	10.77									
145	103.4	93.13	10.27	+31.4								
104+57.3 Service East 1808 S. Grove 106+34.6 Service East for 1758 S. Grove 106+83.2 Service East for 1752 S. Grove (P) 12/30/77 - Wichita Exc. Repl all but lower 6' of line in front 4" SCH 40 No cuts 107+33.6 Service East for 1748 S. Grove 107+84.4 Service East for 1742 S. Grove 108+33.3 Service East for 1738 S. Grove 108+84.1 Service East for 1732 S. Grove 109+36.7 Service East for 1728 S. Grove 109+83.9 Service East for 1722 S. Grove 110+34.6 Service East for 1718 S. Grove 110+84.3 Service East for 1712 S. Grove 110+85.3 Service West for 1715 S. Grove 111+36.3 Service East for 1708 S. Grove 112+04.5 Service East for 1702 S. Grove 113+33.7 Service East for 1658 S. Grove 113+32.6 Service West for 1657 S. Grove 113+83.6 Service East for 1652 S. Grove 114+06.1 Service East for 1650 S. Grove 114+28.4 Service West for 1635 S. Grove 114+60.4 Service East for 1644 S. Grove 114+92.5 Service East for 1638 S. Grove 115+27.2 Service West for 1631 S. Grove 115+44.9 Service East for 1630 S. Grove 116+06.6 Service East for 1628 S. Grove 116+64.2 Service East for 1622 S. Grove 117+63.7 Service East for 2407 E. Harry & 1606 S. Grove 117+62.4 Service West 118+52.0 Service East for 2401 E. Harry												

9 - Tap - 2500 E. Harry - 1-6-28