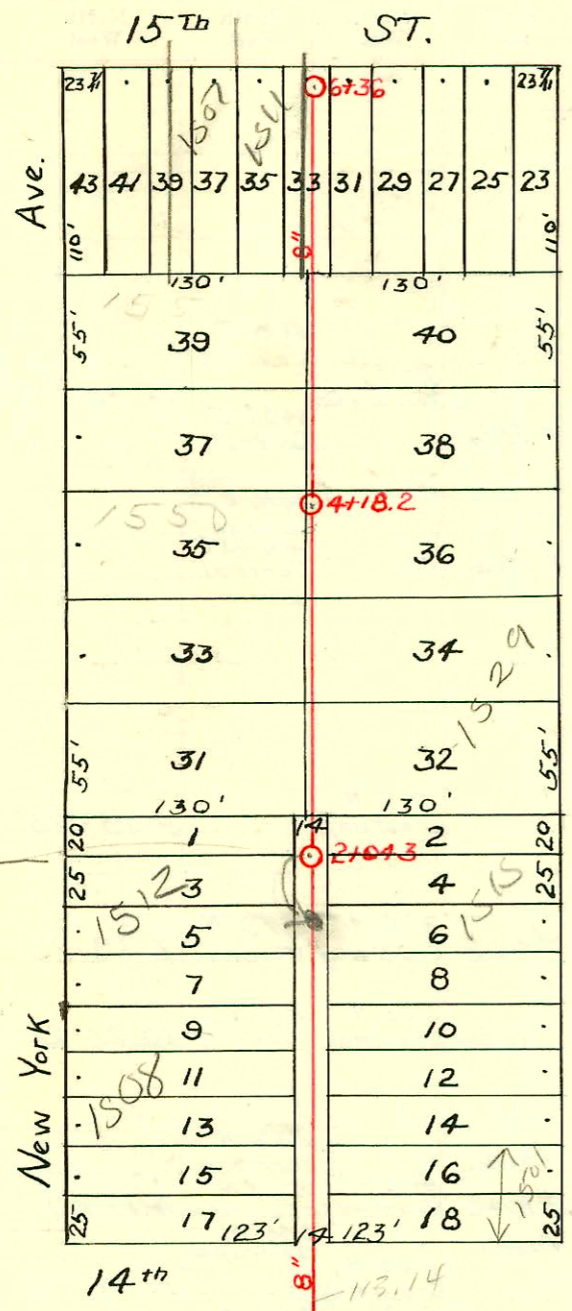


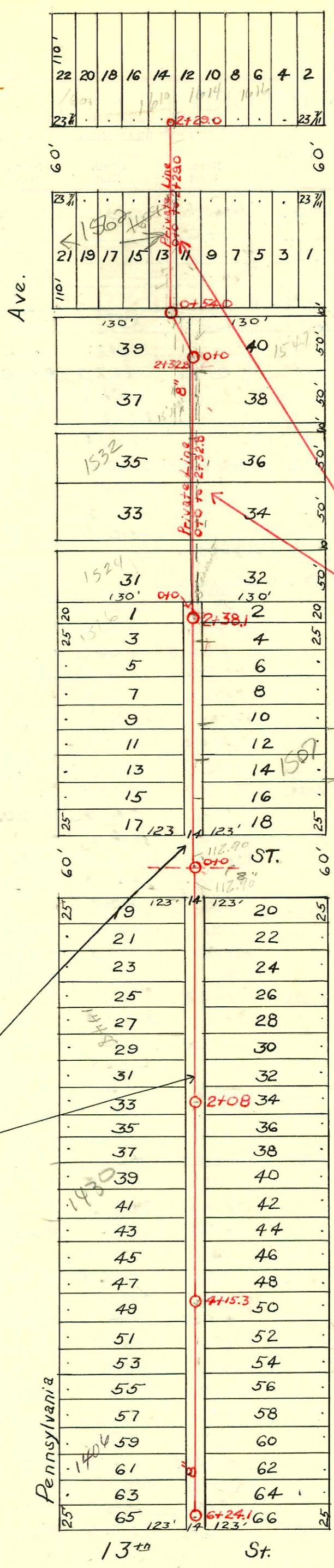
PLAT RECORD



Scale appears off

EASEMENT- Made Dec. 30, 1929, Filed Jan. 17, 1930.
From N. Hibarger. The rear 5' of lots 33, 35, 37, & 39.
New York Ave. as platted in Spring Grove 2nd Addition.

LAT. C, DIST. R, S.S.#12
W.B. Carter, 1930.



‡ Easement - Made Mar. 15, 1945. Filed July 10, 1945.
From Walter F. & Frances Palmer. East 15' of lots 37 & 39 on Pennsylvania Ave. and the East 5' of lot 13 on 15th St.

‡ Easement - West 5' of lots 32, 34, 36 & 38, on Hydraulic Ave. Made Mar. 15, 1945; Filed July 14, 1945. From Wm. L. & Marjorie Lois Graham.

‡ These easements, as written, list these lots as in "Spring Grove Addition. Actually, they are in "Spring Grove 2nd Addition." It is believed that the proper intent and spirit outweigh the error of the letter.

Private Lines
W.B. Carter 1945
0+00 to 2+32.8
0+00 to 2+29.0

Note:
See W.B. Carter before connecting to private line.

2002-00965 41502 1507 N Hydraulic Bowers Plog - 2 Fernco, 17W1N CO, Replace 15' pipe, 4" 40PK
N/A 2003-00172 11703 1562 N Pennsylvania - Cummings & Fitzsimmons - 4" SCH 40 MH Tap to station
0+54 (5549-546) 1H22, 17W1N CO,

CONSTRUCTION RECORD

SERVICE RECORD

STATION	ELEVATION		Depth	MANHOLE	4-INCH "Y" BRANCHES		No. of Permit		House Number		DATE OF PERMITS			
	Ground	Grade			North West	South East	North West	South East	North West	South East	North West	South East	North West	South East
0+0	117.00	113.14	3.86	0+0	0+37.5	0+35								
					0+62.8	0+60.3								
					0+88	0+85.5								
1+0	117.05	113.24	3.81		1+13	1+10.5	#1028	#423	1508 B/D New York	1507 Pennsylvania	12-9-30	4-28-30		
					1+39.5	1+37.0								
					1+61.2	1+72.3	#320	#1048	1510 New York	1511 Pennsylvania	6-1-31	8-16-38		
					1+90	1+87.5								
2+0	117.08	113.34	3.74	2+04.3	2+09.5	2+07	#267	#249	1512 S New York	1515 A Pennsylvania	10-12-32	3-6-30		
					2+34.3	2+31.8								
					2+61.5	2+59	#1658		1524 New York		7-19-44			
					2+86.6	2+84.1								
3+0	117.56	113.44	4.12		3+12	3+09.5								
					3+37.5	3+35								
					3+60.5	3+58								
					3+86.1	3+83.6								
4+0	117.42	113.54	3.88		4+10.2	4+07.7	#833		1529 S/D Pennsylvania		8-13-30	9-4-30		
				4+18.2	4+37	4+34.5								
					4+61.7	4+59.2								
					4+86.6	4+84.1	#3215	#514	1536 New York	1543 Pennsylvania	2-6-50	5-19-30		
5+0	117.64	113.64	4.00		5+12.5	5+10.0								
					5+37.5	5+35	#6252	#2576	1507 E. 15th.	1527 E. 15th.	7-23-02	9-18-52		
					5+63.5	5+61	#638		1511 E. 15th.		3-31-52			
6+0	117.32	113.74	3.58		6+89.2	6+86.7								
6+36	117.59	113.77	3.82	6+36	6+17.5	6+15								
0+0	116.81	112.90	3.91	0+0	0+47.4	0+59.9	#2977		1456 Pennsylvania	1605 E. 14th.	6-22-73	4-25-46		
					0+73.0	0+75.5	#27							
1+0	116.82	113.00	3.82		0+98.5	1+01	#2537	#3264	1448 Pennsylvania	1451 No. Hydraulic	10-2-50	11-30-30		
					1+50.1	1+52.6	#372		1448 Pennsylvania	1449 No. Hydraulic		4-15-30		
					1+75	1+77.5	#5811		1448 Pennsylvania	1447 No. Hydraulic	9-14-51	5-14-86		
2+0	117.09	113.10	3.99	2+08	2+00.5	2+03	#265							
					2+26.2	2+28.7	#153							
					2+51.7	2+54.2								
					2+76.8	2+79.3								
3+0	116.76	113.20	3.56		3+02	3+04.5	#6386		1434 Pennsylvania		11-6-51			
					3+28	3+30.5								
					3+54.2	3+56.7	#16362	#235	1428 Pennsylvania	1425 No. Hydraulic	11-14-62	3-24-30		
					3+79.1	3+81.6								
4+0	116.86	113.30	3.56	4+15.3	4+01.5	4+04	#654	#26	1424 Pennsylvania	1423 No. Hydraulic	8-26-47	2-18-35		
					4+27.5	4+30	#5929		1424 Pennsylvania		9-27-57			
					4+53.4	4+55.9								
					4+79	4+81.5	#1816		1420 Pennsylvania	1411 No. Hydraulic	10-14-66	4-14-47		
5+0	116.46	113.40	3.06		5+04	5+06.5	#1696		1427 Pennsylvania	1427 No. Hydraulic	5-0	6-9-44		
					5+28.7	5+31.2								
					5+55	5+57.5								
6+0	116.63	113.50	3.13		5+80.5	5+83	#1790	#359	1600 Pennsylvania	E. 13th.	12-21-48	6-19-31		
6+24.1	116.54	113.53	3.01	6+24.1	6+11	6+13.5								
0+0	116.71	112.90	3.8	0+0	0+39.5	0+42								
						0+62.4	#356		1501 No. Hydraulic			6-17-31		
					0+72.7		#482		1502 Pennsylvania		5-10-30			
					0+85.5	0+96	#454		1507 No. R Hydraulic		4-5-02	5-3-30		
1+0	117.00	113.0			1+08	1+10.5	#767		1510 Pennsylvania		7-31-30			
					1+34	1+36.5	#439		1511 No. Hydraulic			8-30-37		
					1+59	1+61.5								
					1+84.6	1+87.1	#427		1514 Pennsylvania		4-28-30			
2+0	116.76	113.10			2+10.1	2+12.6	#798		1513 No. Hydraulic			8-11-30		
2+38.1	117.01	113.15		2+38.1	2+30.2	2+32.7	#739		1516 Pennsylvania		7-22-30			
0+00	117.0	113.15	3.9	0+0	0+19.7	0+16.7								
					0+47.0	0+44.0	#2849		1524 S/D Pennsylvania		8-13-90	10-24-50		
					0+71.3	0+68.3	#3695	#831	1528 Pennsylvania	1521 No. Hydraulic	1-15-57	4-8-52		
					0+98.4	0+95.4								
1+00	116.7	113.25	3.5		1+23.8	1+20.8	#2034		1532 Pennsylvania		5-2-45			
					1+56.1	1+53.1								
					1+93.0	1+90.0	#3378		1539 No. Hydraulic			12-4-52		
2+00	116.4	113.35	3.0		conn.									
2+32.8	116.2	113.38	2.8	2+32.8-0.4	2+30.6	2+27.6			1540 Pennsylvania		W.B. Carter Mar. 1945			
0+0	116.3	113.38	2.9	0+0	0+16.4	0+13.4	#1788		1547 No. Hydraulic			3-17-48		
					0+42.7	0+39.7								
0+54.0	116.4	113.43	3.0	0+54.0	0+63.0	0+60.0	#2319		1609 E. 15th.		7-14-02	8-25-52		
1+00	116.1	113.48	2.6		1+75.5									
2+00	115.8	113.58	2.2		2+25.8	2+22.8	#2006		1557 E. 15th.		11-25-66	4-19-45		

Same M.H. Private Line
Private Line

EASEMENT

SO. C39660 6-22-73
 #1766 Tap - 1605 E 14th - 3-15-48 - Chas. W. Burgan
 #1265 Tap - 1508 New York - 6-10-50 - Ray Yackley
 #105 Tap - 1547 No. Hydraulic - 2-18-52 - G.A. Smith
 064405 - 1406 N. Pennsylvania
 B14928 - 1452 E. 15th - 10-30-55 - 50.5' S of M.H.
 5257 TAP 1434 PENN - NONES 9-6-57
 #16197 tap 1415 N. Hydraulic Rd. 12-19-62 (4+41.1)
 C70282 - (502 New York) S.O. - 2-15-79 (0+62.6)
 91-30871-7 1547 N. Hydraulic 8-27-91 (4' clay 19' south of NPL)
 92-36469-7-1512 New York - Sealed off - 35' South of N. P.L. (1+69.3 approx)