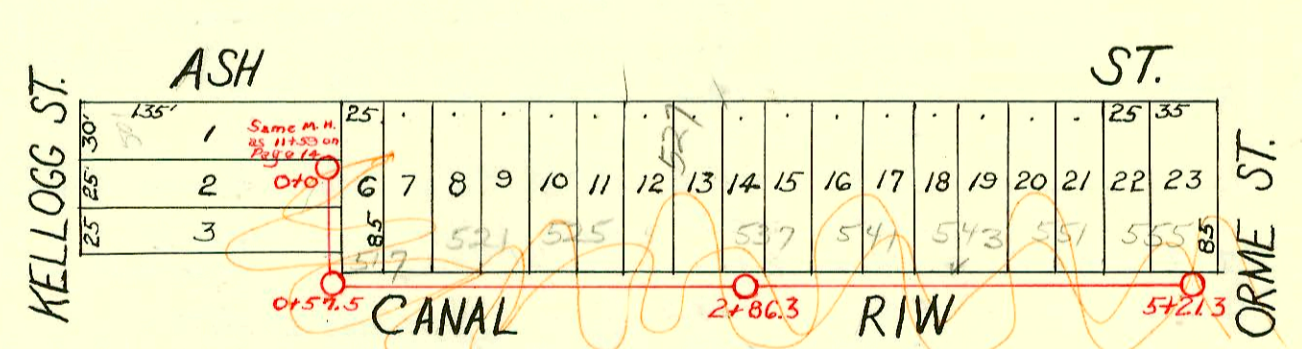


Note:
 Jerry Blain
 advised on
 10/3/89 that
 This is still city
 line. If KGE
 wants to make it
 private, they need
 to replat.
 10/3/89
 BK

LAT 1 - S.S. No. 12
 1924

509 Piatt
 top - priv. handle
 503 Piatt
 top



LAT. A - DIST. 2 - S.S. #12
 Mielert 1928

CHANGES BY STATE HWY DEPT
 BOOKED 8-13-77 AS BUILT PLAN



CONSTRUCTION RECORD

SERVICE RECORD

STATION	ELEVATION		Depth	MANHOLE	4-INCH "Y" BRANCHES		No. of Permit		House Number		DATE OF PERMITS	
	Ground	Grade			North West	South East	North West	South East	North West	South East	North West	South East
Line East from Sta. 0+0 between Platt & Minnesota 0+0	112.49	105.62	6.87	0+0	North 55.0 0+62.7	South 0+20 +44.5	#1034	#1906	505 N. Platt 1920 E. Central	1920 E. Central	11-9-70	11-21-86 8-20-24
1+0	112.49	105.52	6.97			+72.7		23545		505 N. Platt		7-17-89
+60	113.83	105.45	8.38	1+60 M.H. in Platt		+98.5						
Line West from Sta. 0+0 bet. Platt & Minnesota 0+0	112.49	105.62	6.87	0+0		0+14.3 0+42 0+64.5		#590 #1487		2008 E. Central 1920 E. Central		6-11-30 1-19-48
1+0	112.42	105.72	6.70		1+47.5 In Minnesota	1+87.5 1+12.5 +76		#404 #2061		2002 E. Central 1806 E. Central		5-19-27 10-6-24
2+0	112.24	105.82	6.42			2+02 +27.7 +52.6		#2060		1802 E. Central		10-6-24
2+88	111.89	105.90	5.99	2+88		+78						
Line No. from Sta. 0+0 bet. Platt & Minnesota 0+0	112.49	105.62	6.87	0+0	west 0+11.5 +37 +62 +87	East 0+14.0 +39.5 +64.5 +89.5		#1342		507 Platt		12-15-25
1+0	112.45	105.72	6.73		1+13 +38 +64 +89	1+15.5 +40.5 +66.5 +91.5		#55 #129		515 Platt 517 Platt		11-9-70 1-28-26 2-24-26
2+0	112.38	105.82	6.56	2+39.7	2+16.8 +42.3 +68 +93	2+19.3 +44.8 +70.5 +95.5	#1223 #2052		529 53 Platt 535 Platt		11-9-70 5-27-24 9-9-24	
3+0	112.42	105.92	6.50		3+18.8 +43.8 +70 +95	3+21.3 +46.3 +72.5 +97.5	#993		545 Platt		11-9-70 5-1-24	
4+0	112.15	106.02	6.13		4+20.3 +46.2 +70.7 +96.5	4+22.8 +48.7 +73.2 +99	#236 20614		1900 E. Central		11-22-28	
5+0	108.62	106.12	2.50		5+21.5 +47 +72 +97.5	5+24 +49.5 +74.5 6+00			202 KGE Central		7-28-89	
6+0	107.70	106.22	1.48		6+22.5 +48 +72.7	+25 +50.5 +75.2						
7+0	108.10	106.32	1.78		7+15.7 7+01	7+03.5						
M.H. West of Ash 0+0	106.95	99.80	7.15	0+0	0+45 N. 0+57.5	East 0+76.5 1+02.2 1+28.9 1+54.8 1+80.7 2+06.7 2+32.8 2+58.8 2+92.7 3+18.8 3+45.1 3+70.8 3+96.7 4+22.7 4+48.5 4+74.5 5+00.7		#166 #60 #338 #1302 #1303 #1246 #1193 #18053 #141 #1233		517 S. Ash 525 S. Ash 545 S. Ash 525 S. Ash 527 S. Ash 537 S. Ash 539 S. Ash 543 S. Ash 551 S. Ash 555 S. Ash		6-23-71 11-12-32 2-7-31 4-10-29 8-21-69 12-12-28 7-8-69 12-12-28 11-26-28 4-30-69 11-12-28 2-19-70 10-24-69 3-9-29 11-21-28
1+0	108.68	99.92	8.76									
2+0	107.35	100.02	7.33									
3+0	106.28	100.12	6.16		2+86.3							
4+0	106.98	100.22	6.76									
5+0	106.70	100.32	6.38									
5+21.3	106.74	100.35	6.39	5+21.3								

#278 - Tap - 1901 E. Kellogg - 4-1-29 - Lawhead & Chapman
 #41 - Tap - 1840 E. Central - 1-29-31 - Connor & Ripstra (Kansas Gas & Elec. Bldg)
 #42 - Tap - 1840 E. Central - 1-29-31 - Connor & Ripstra (Kansas Gas & Elec. Bldg)
 #4126 - Tap - 1900 E. Central - 8-23-41 - J.M. Connoughton (KGE Ball Park - Tapped at T12.1)
 #2345 - 2024 E. Central - 8-24-45 - Shepard Plg. (Used old connection)
 #885 - 509 Platt - 11-2-46 - Ray Bryant (Private House Line)
 #3798 - Tap - 503 Platt - 1-30-51 - C.G. Coleman
 #B5873 - Seal off 2021 E. Kellogg - Dan Duffin - 6-22-66
 #23575 - 7-21-89 - 2008 E. Central - MC - TAP 141 S of a M.H. serves sanitary only. Storm sewer was disconnected from this MAP.
 Seal off - 321706 - ad planning - 11-9-70
 2150 Reynolds 441 Platt trailer 82956
 2151 Reynolds 441 Platt trailer 82956

#6119 - Tap - 1924 E. Central }
 #6120 - Tap - 1924 E. Central } 10-15-51
 #6121 - Private line - 1924 E. Central } Trailers
 #6122 - Private line - 1924 E. Central } Joe McDonald
 #6123 - Private line - 1924 E. Central }