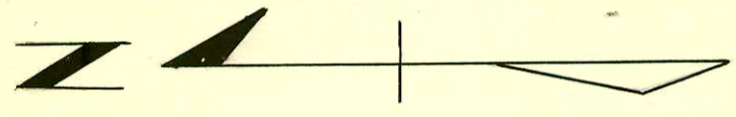


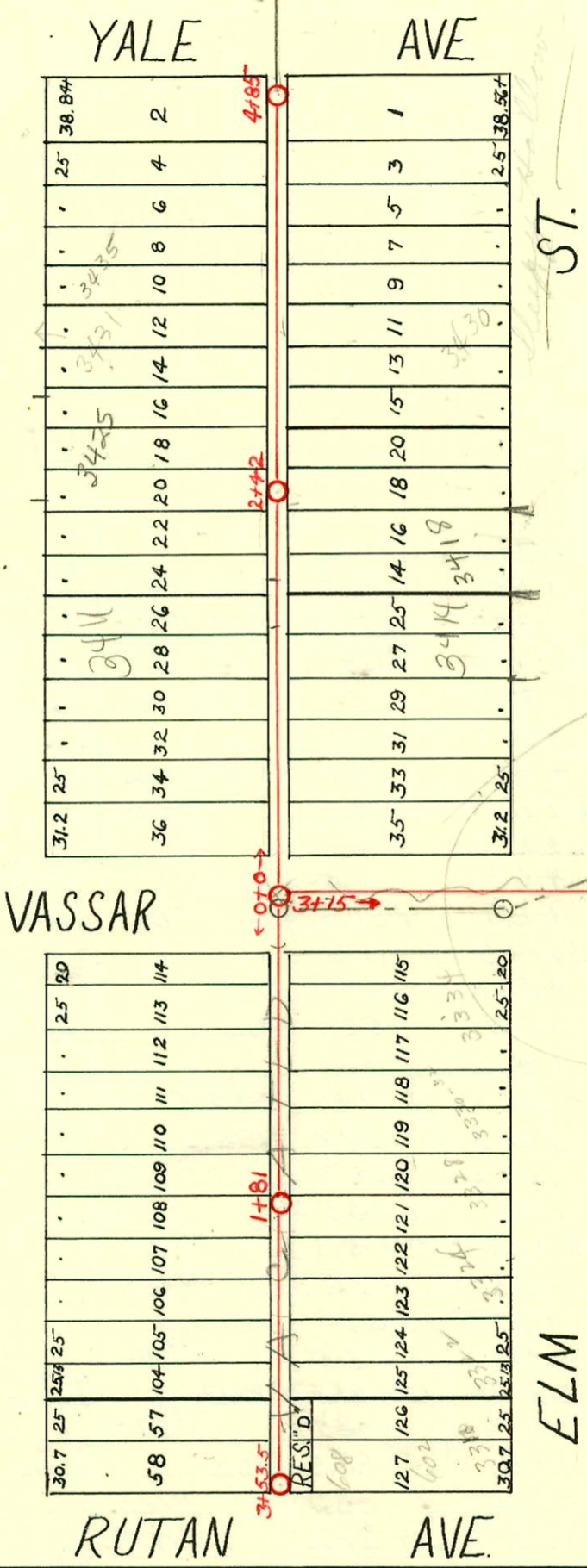
1+97.5
C-50

LAT. M - DIST. D.
S.S. No. 12
1924.

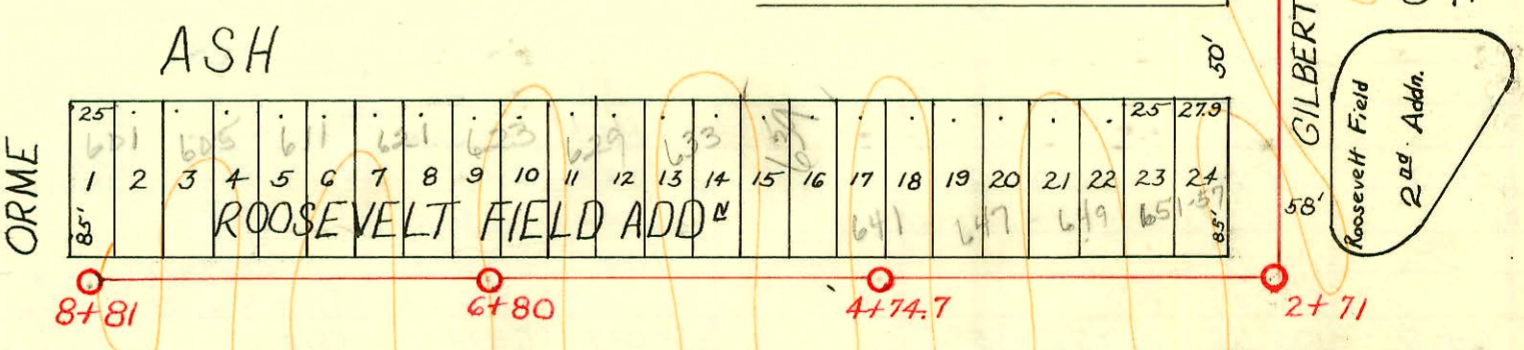


ST.

PINE



CHANGES BY STATE HWY DEPT. DATA - DIST. 2 - S.S. #12
BOOKED 8-13-77 AS BUILT PLAN
See Page 13 For rest of Lat.



CONSTRUCTION RECORD

SERVICE RECORD

STATION	ELEVATION		Depth	MANHOLE	4-INCH "Y" BRANCHES		No. of Permit		House Number		DATE OF PERMITS			
	Ground	Grade			North West	South East	North West	South East	North West	South East	North West	South East	North West	South East
<i>Between Elm & Pine From Vassar To Rutan.</i>														
Line in Vassar														
0+0	144.50	141.0	3.5	0+0	0+46	0+43.5	#3375	#1213	3329 S.O. Pine	3334 E. Elm	7-20-72	7-28-78		
1+0	145.37	141.2	4.17		+71	+68.5	#2215	#896	3325 E. Pine	3324 E. Elm	10-6-25	1-2-30		
2+0	150.73	141.4	9.33		+96.3	+93.8	#737	#897	3325 E. Pine	3324 E. Elm	10-1-24			
3+0	151.25	141.6	9.65		1+22	1+19.5	#3315	#897	3321 E. Pine	3328 E. Elm	3-12-71	5-5-83		
+15	151.50	141.63	9.87		+47.5	+45	#3315	#897	3321 E. Pine	3328 E. Elm	8-26-26	7-19-29		
<i>West From Vassar</i>														
0+0	151.54	142.0	9.54	1+81	+98	+95.5	#273	#1160	3319 E. Pine	3322 E. Elm	7-20-72	8-27-29		
1+0	150.39	142.1	8.29		2+23	2+20.5	#1160		3322 E. Elm			8-27-29		
2+0	149.77	142.2	7.57		+47.5	+45	#1283	#1159	3307 E. Pine	3318 E. Elm	7-20-72	8-27-29		
3+0	149.56	142.3	7.26		+73.5	+71	#976	#238	3301 E. Pine	602 N. Rutan	5-13-29	11-13-26		
+53.5	150.99	142.35	8.64		+99	+96.5						10-8-35		
					3+24.5	3+22								
					3+53.5	+46.5								
<i>Between Elm & Pine From Vassar To Yale.</i>														
0+0	151.54	142.0	9.54	0+0	0+32	0+34.5		#706		3402 E. Elm		2-14-38		
					+58	+60.5		#1633		3403 E. Pine		11-15-29		
					+83	+85.5								
1+0	153.51	143.30	10.21		1+08.7	1+11.2	#801	#693	3407 E. Pine	3406 E. Elm	4-12-38	2-2-38		
					+34	+36.5		#69	3417 E. Pine			3-20-36		
					+59.7	+62.2		#987	3415 E. Pine			9-11-28		
2+0	153.32	144.60	8.72		2+11	2+13.5	#1565	#1542	3425 E. Pine	3422 E. Elm	6-10-52	10-28-29		
					+33.6	+36.1								
					+59	+61.5								
					+84	+86.5								
3+0	155.57	145.90	9.67		3+10	3+12.5		#280	3430 E. Elm			3-28-31		
					+35	+37.5		#148	3431 E. Pine			3-28-31		
					+61.2	+63.7								
					+86.2	+88.7								
4+0	158.82	147.20	11.62		4+10.7	4+13.2								
					+36.8	+39.3								
+85	157.02	148.20	8.82		+62.5	+65	#472		3431 E. Pine			5-8-30		
					4+85	+77.5								
<i>M.H. in Gilbert E. of Ash</i>														
0+0	103.50	98.10	5.40	0+0		East								
1+0	104.28	98.20	6.08											
2+0	104.67	98.30	6.37	M.H. W. of Ash	2+71			#713	657 S. Ash			3-1-38		
3+0	104.90	98.40	6.50					#1087	653 S. Ash			8-21-69		
								#712	633 S. Ash			6-15-29		
4+0	104.94	98.50	6.44					#552	641 S. Ash			5-15-29		
					4+74.7			#553	637 S. Ash			7-8-69		
								#293	633 S. Ash			4-3-29		
5+0	104.90	98.60	6.30											
6+0	104.62	98.70	5.92					#243	629 S. Ash			10-27-69		
								#580	611 S. Ash			8-21-69		
					6+80			#1204	621 S. Ash			6-7-30		
7+0	104.76	98.80	5.96									9-3-29		
												11-21-69		
												2-2-70		
8+0	104.94	98.90	6.04					#395	605 S. Ash			11-21-69		
												4-18-29		
8+81	104.98	99.00	5.98	8+81				#242	601 S. Ash			10-27-69		
												3-27-29		

R 3332 E. Elm - 7-28-78 (R)

Tap #168 - 623 S. Ash - 3-29-29 - Frank M. Coy (6+77)
 Tap #612 - 701 S. Ash - 7-5-29 - J.E. Lansdowne
 Tap #145 - 3418 E. Elm - 3-3-50 - C.C. M. Laughlin
 Tap #545 - 3436 N.E. Parkway - 12-1-31 - C.C. M. Laughlin
 Tap #2105 - 610-12 - N. Rutan - 2-28-40 - Chas. Callison
 Tap #33 - 3414 E. Elm - 5-2-46 - Simmons P/bg
 Seal off 3332 E. Elm - 7-28-78 - Al Henning # 267570 (1+43)
 Seal off 3334 E. Elm - 7-28-78 - Al Henning # 267569 (1+01)