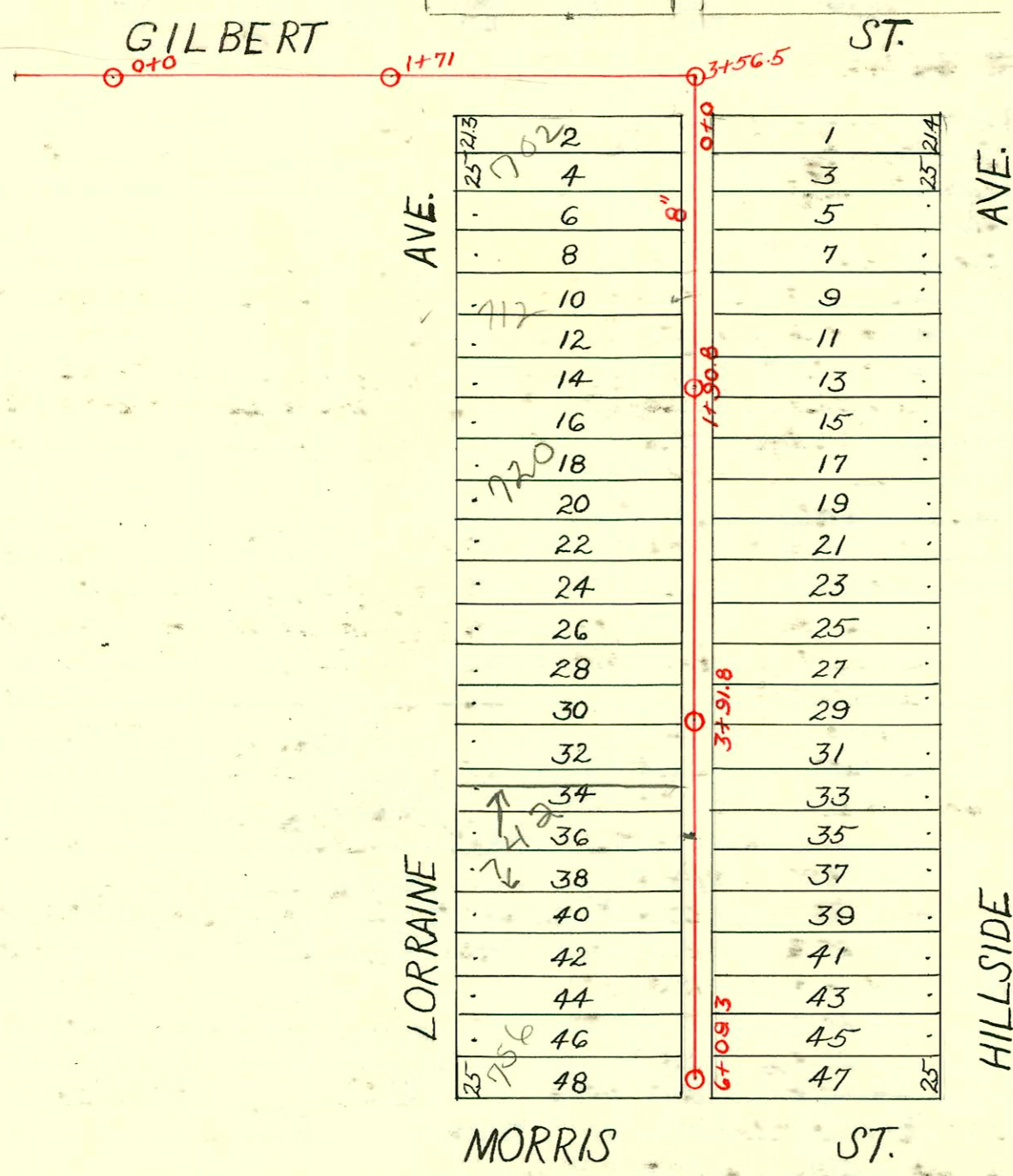
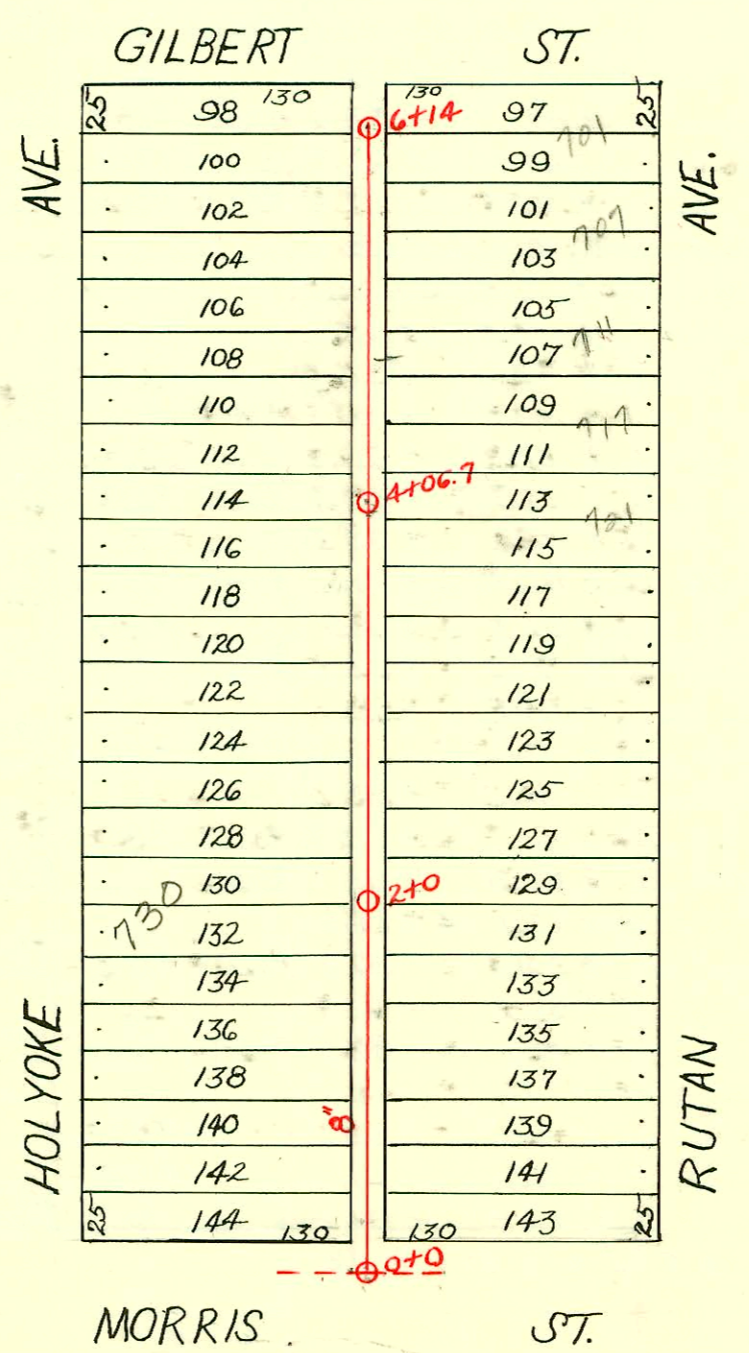


656 Age test on 3/15/62 by Steve Roberts sewer maint. all eas 656 Lorraine is connected to line in Gilbert BSR



LAT. 1 - DIST. 3 - S.S. No. 12 1925



LAT. F. - DIST. 6 - S.S. No. 12 Merlet - 1929



CONSTRUCTION RECORD

SERVICE RECORD

STATION	ELEVATION		Depth	MANHOLE	4-INCH "Y" BRANCHES		No. of Permit		House Number		DATE OF PERMITS			
	Ground	Grade			North West	South East	North West	South East	North West	South East	North West	South East		
Line in Gilbert	0+0	107.90	100.35	7.55	0+0 M.H. in Gilbert at Alley W. of Lorraine									
	1+0	108.30	100.45	7.85										
	2+0	109.10	100.55	8.55	M.H. in Gilbert at Lorraine By Special Request					655 S. Hillside		10-20-25		
	3+0	108.90	100.65	8.25	1+71 North Only									
	3+56.5	108.70	100.71	7.99	M.H. in Gilbert alley W. of Hillside	3+52.7								
Line Bet. Hillside & Lorraine from Gilbert to Morris	0+0	108.70	100.71	7.99	0+0 For line south									
					0+32.3	0+29.8	#1345	#181	702 S. Lorraine	701 S. Hillside		12-27-28	3-18-27	
					+57.9	+55.4								
					+85.5	+83	#536		714 S. Lorraine			6-22-26		
	1+0	108.00	100.81	7.19	1+09.8	1+07.3	#351	#626	704 S. Lorraine	705 S. Hillside		4-10-29	7-25-27	
					+35.3	+32.8	15851	#728	712 S. Lorraine	705 S. Hillside		7-5-62	8-30-27	
					+61.5	+59	16656		712 S. Lorraine			2-14-63		
	2+0	107.50	100.91	6.59	1+90.8	+85.2	+82.7							
					2+10.3	2+07.8		#772	720 S. Lorraine	711 S. Hillside			9-14-27	
					+36	+33.5	#143		712 S. Lorraine	723 S. Hillside		2-18-28		
					+61.8	+59.3	#2516	#1302	712 S. Lorraine	712 S. Hillside		12-4-45	9-16-29	
					+86.9	+84.4	#159		724 S. Lorraine	727 S. Hillside		4-14-37		
	3+0				3+13.5	3+11		#1260	732 S. Lorraine	727 S. Hillside			12-1-28	
					+39	+36.5	#127		732 S. Lorraine	731 S. Hillside		4-28-36		
					+65	+62.5		#694	732 S. Lorraine	731 S. Hillside			6-13-29	
	4+0	107.30	101.11	6.19	3+91.8	+85.2	+82.7							
					4+11	4+08.5		#497	#82	742 S. Lorraine	741 S. Hillside		11-14-36	1-30-28
					+37	+34.8								
					4+40.8	4+60.8		#1322	#494	742 S. Lorraine	743 S. Hillside		9-11-03	9-16-03
	5+0	107.40	101.21	6.19		+88.9	+86.4		#1078	747 S. Hillside		6-21-39	5-11-25	
					5+14.8	5+12.3		#374		752 S. Lorraine			12-22-30	
					+40.5	+38	#375	#154	754 S. Lorraine	753 S. Hillside		4-13-28	3-5-30	
	6+0	107.50	101.31	6.19		+66.3	+63.8							
					5+90.3	+87.5	+85	#313		756 S. Lorraine		1-20-95	3-30-28	
	6+09.3	107.40	101.32	6.08	6+09.3	6+02.5	6+0		#107	757 S. Hillside				
Grade on line in Orme from Alley E. to Alley W. of Holyoke	0+0	110.93	103.0	7.93	0+0 M.H. in Orme at alley W. of Holyoke									
	1+0	111.56	103.3	8.26										
	2+0	112.94	103.6	9.34										
	3+0	115.43	103.9	11.53										
	3+17.5	116.17	103.95	12.22	3+17.5 M.H. in Orme at alley E. of Holyoke									
					M.H. in Morris									
	0+0	114.74	108.79	5.95	0+0	0+27.5	0+25	#1524	#1206	740 S. Holyoke	757 S. Rutan	10-24-29	11-15-38	
						0+52.5	0+50							
						0+78.8	0+76.3	#792	#1013	744 S. Holyoke	753 S. Rutan	4-6-38	7-27-38	
	1+0	114.49	108.89	5.60		1+95.3	1+92.8							
						1+32	1+29.5		#2713	747 S. Rutan			9-23-42	
						1+57.2	1+54.7	#68		732 S. Holyoke	743 S. Rutan	2-11-31	9-23-42	
						1+82.2	1+79.7		#2712					
	2+0	114.96	108.99	5.97	2+0	2+07.7	2+05.2							
						2+34.1	2+31.6	#1085	#2711	728 S. Holyoke	737 S. Rutan	12-23-30	9-23-42	
						2+60.2	2+57.7							
						2+86.2	2+83.7	#1506	#121	720 S. Holyoke	731 S. Rutan	10-23-29	9-18-41	
	3+0	115.20	109.09	6.11		3+12.0	3+09.5							
						3+38.3	3+35.8	#1355	#3946	716 S. Holyoke	727 S. Rutan	9-24-29	7-31-41	
						3+63.5	3+61							
						3+89.3	3+86.8	#1339	#3509	714 S. Holyoke	721 S. Rutan	9-24-29	5-20-46	
	4+0	115.93	109.19	6.75	4+06.7	4+15.5	4+13	#963	#2959	730 S. Holyoke	717 S. Rutan	10-21-30	12-6-40	
						4+41.2	4+38.7	#1676		712 S. Holyoke			11-27-29	
						4+67.5	4+65							
						4+92.8	4+90.3	#1653	#1829	708 S. Holyoke	711 S. Rutan	11-20-29	9-12-39	
	5+0	115.86	109.29	6.57		5+18.8	5+16.3		#2457	707 S. Rutan			7-31-42	
						5+45.5	5+43	#1654		704 S. Holyoke			11-20-29	
						5+70.5	5+68							
	6+0	115.96	109.39	6.57	6+14	5+96.2	5+93.7	#2319	#2899	702 S. Holyoke	701 S. Rutan	5-14-40	11-27-40	
	6+14	116.06	109.41	6.65										
2003-02409-911603-7305 Holyoke - Superior P169 - 4" PVC, install (twin) co, 1145 - NO MSMT - 2003-02377 911603 942 S Lorraine - Apex P169 - City repair 4" P169 72'S of MH3+91.8 (4+63.8) 1V22, 2V45, 1W45, 2 Kickouts, 1H45, 1H22, 2 twin co, shallow, 4" 40PVC 2003-02406 911603 973 Hillside - Apex - City repair 4" P169 - 1V45, 1 Fernco, 4" 40PVC 69'S of MH3+91.8 (4+60.8)														

#2312 - Tap - 743 S. Hillside - 8-25-52 - Frederick P169.