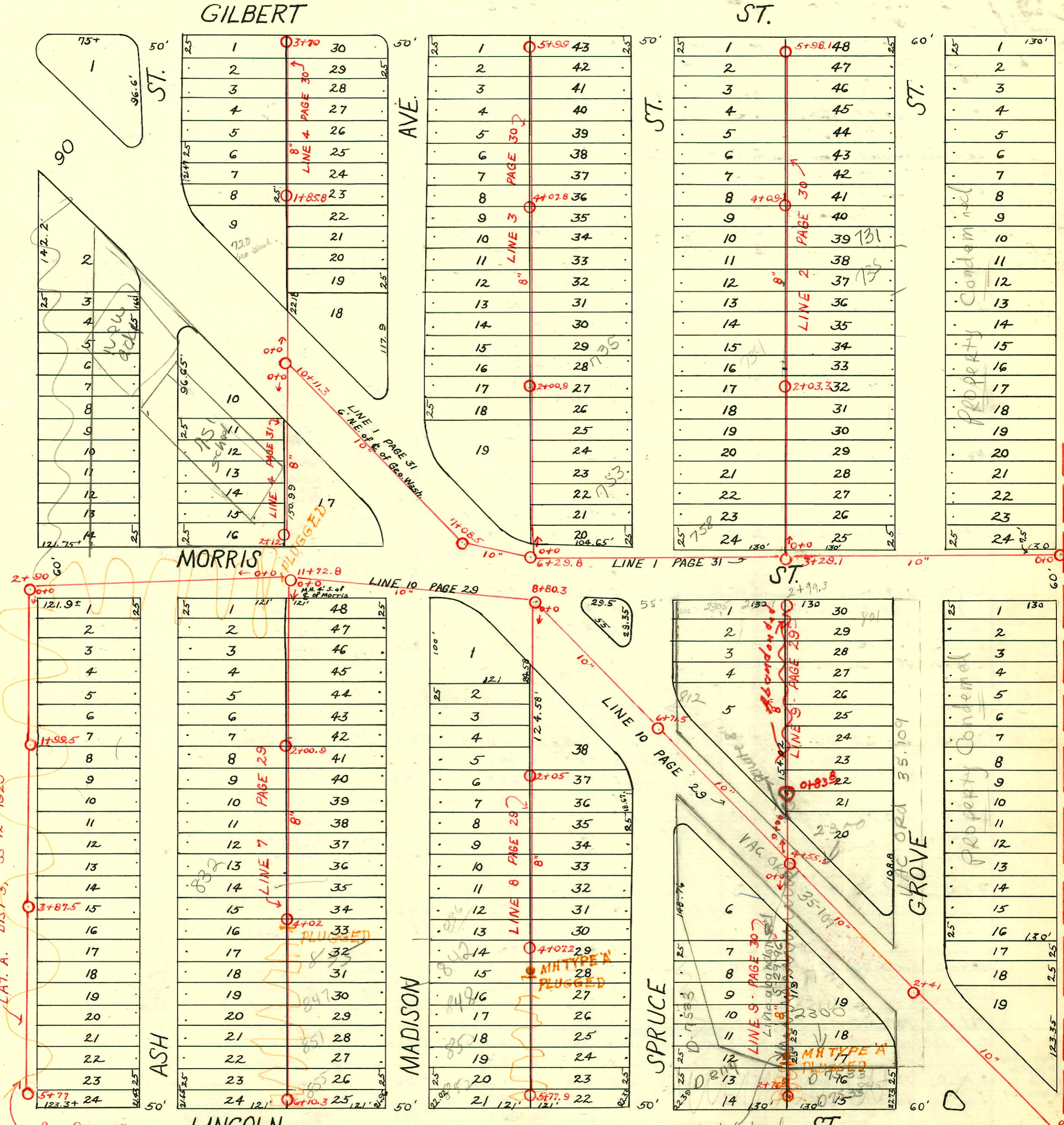


1=100



LAT. A. DIST. 5, SS 12-1929

See Page 27 for Y's

CHANGES BY STATE HWY DEPT  
 BOOKED 8-20-77 FROM AS BUILT PLAN

2003-02077 8/7/03 756 Geol Wash 1B1  
 Boardman - 4" PK - 1TWINCO, 1H45, 4H22 tied to exist SWR in Mechanical Rm

Note:  
 All lines from center of block between Ash & Madison  
 East to main in alley E. of Grove are in Dist. 5,  
 S.S. No. 12 - Built in 1926 by H.L. Miles.

42' College Hill MAIN

CONSTRUCTION RECORD

SERVICE RECORD

LINE 9  
S. From Geo.  
Washington  
Between Spruce  
& Grove.

LINE 2.  
N. From  
Morris - Between  
Spruce &  
Grove.

LINE 3  
N. From Morris  
Bet. Spruce &  
Madison

LINE 4  
No. from Geo.  
Washington  
Bet. Ash &  
Madison

STATION	ELEVATION		Depth	MANHOLE	4-INCH "Y" BRANCHES		No. of Permit		House Number		DATE OF PERMITS		
	Ground	Grade			North West	South East	North West	South East	North West	South East	North West	South East	
0+0	103.30	96.25	7.05	M.H. in Geo. Wash. 0+0	0+34		#34		816 S. Spruce		1-16-28		
1+0	103.06	96.35	6.71	Line abandoned to 0700 M.H. 5/29/96	+69.3	0+66.8			818 S. Spruce		7-1-71		
					1+19.7	1+17.2	#843		849 Geo. Wash. Blvd. 853 S. Grove		10-6-27	7-1-71	6-11-57
					+45.5	+43			842 S. Spruce		12-1-27	7-25-51	12-27-27
					+71	+68.5			846 S. Spruce		11-21-27	8-15-50	
2+0	102.91	96.45	6.46		2+21.5	2+19.5			845 S. Spruce		8-3-71		
					+46.7	+44.2	#3793		847 S. Grove		12-27-72	7-9-41	
2+76.5	103.25	96.53	6.72	2+76.5	+72	+69.5	#1132		856 S. Spruce		12-23-27		
0+0	103.76	96.40	7.36	M.H. in Morris 0+0	0+29	0+26.5	#3494		759 S. Grove		9-19-72	9-19-72	12-1-26
					+54.7	+52.2							
					+80	+77.5							
1+0	103.41	96.50	6.91		1+06.3	1+03.8	#935	#135	754 S. Spruce	755 S. Grove	10-31-27	9-19-72	3-4-27
					+31.5	+29		#330	740 S. Spruce	743 S. Grove			5-2-27
					+57.3	+54.8	#1009	#735	748 S. Spruce	748 S. Grove	11-15-27	8-31-27	
					+83	+80.5		#844		741 S. Grove			10-1-26
2+0	103.61	96.60	7.01	2+03.4	2+09	2+06.5			734 S. Spruce	739 S. Grove	9-10-27	11-22-26	
					+34.3	+31.8	#764	#1010					
					+59.5	+57				737 S. Grove			1-7-27
					+85	+82.5		#18					
3+0	103.72	96.70	7.02		3+11.1	3+08.6	#809		732 S. Spruce		9-27-27		
					+36.5	+34	#777	#116	720 S. Spruce	735 S. Grove	9-14-27	2-24-27	
					+61.8	+59.3							
				4+09.1	+88	+85.5	#921	#274	722 S. Spruce	731 S. Grove	10-27-27	3-26-28	
4+0	103.90	96.80	7.10		4+16.2	4+13.7	#494		718 S. Spruce		6-13-27		
					+38.6	+36.1		#328		717 S. Grove			4-30-27
					+64.2	+61.7		#96		713 S. Grove			2-6-28
					+89.7	+87.2	#636		710 S. Spruce		7-27-27		
5+0	103.99	96.90	7.09		5+15.3	5+12.8		#229		705 S. Grove		4-2-27	
					+41	+38.5	#526	#841	706 S. Spruce	707 S. Grove	6-24-27	10-1-26	
					+67	+64.5		#799		703 S. Grove		9-21-27	
5+98.1	104.16	97.00	7.16	5+98.1	+92.5	+90				757 S. Spruce			5-21-28
0+0	105.42	96.70	8.72	M.H. in Morris 0+0	0+38.3	0+35.8		#544					
					+62.5	+60		#952		753 S. Spruce			9-4-28
					+88.5	+86		#974	#685	750 S. Madison	749 S. Spruce	9-10-28	8-15-27
1+0	104.20	96.80	7.40		1+15.2	1+12.7		#896	#680	742 S. Madison	741 S. Spruce	10-20-27	8-11-27
					+42.5	+40							
					+68	+65.5		#916	#79	736 S. Madison	735 S. Spruce	9-30-27	7-19-28
					+96	+93.5							
2+0	104.02	96.90	7.12		2+21.4	2+18.9		#584		735 S. Spruce			7-12-27
				2+00.9	+46.7	+44.2		#97		732 S. Madison		2-16-27	
					+71.9	2+69.4							
					+97.5	+95		#205	#544	726 S. Madison	731 S. Spruce	3-8-28	6-27-27
3+0	104.05	97.00	7.05		3+22.5	3+20		#456		723 S. Spruce		5-31-27	
					+48	+45.5							
					+73.5	+71		#672		720 S. Madison		8-10-27	
					+98.1	+95.6							
4+0	104.20	97.10	7.10		4+24.7	4+22.2		#1094		717 S. Spruce		12-12-27	
				4+07.8	+49.7	+47.2		#817		711 S. Spruce		8-2-28	
					+75.1	+72.6							
					+00.8	+98.3		#177		710 S. Madison		11-9-27	
					+26.3	5+23.8		#33		711 S. Spruce		1-16-28	
					+50.7	+48.2		#242	#307	702 S. Madison	701 S. Spruce	4-6-27	3-28-28
					+73.6	+71.1		#1065		702 S. Madison		12-1-27	
5+99	103.92	97.31	6.61	5+99.0	+94	+91.5				733 S. Madison		9-24-28	
0+0	103.82	97.15	6.67	M.H. in Geo. Wash. 0+0	0+56	0+53.5		#1035					
					+81	+78.5							
1+0	104.18	97.25	6.93		1+06.8	1+04.3		#98		727 S. Madison		2-16-27	
					+31.7	+29.2		#611	#843	720 S. Ash	723 S. Madison	2-15-73	10-1-26
					+57.1	+54.6							
				1+85.8	+80.2	+77.7							
2+0	104.10	97.35	6.75		2+07.8	2+05.3		#567	#439	718 S. Ash	715 S. Madison	4-19-73	5-27-27
					+33	+30.5							
					+58	+55.5		#456	#360	714 S. Ash	711 S. Madison	4-30-29	5-10-27
					+84.3	+81.8							
3+0	103.95	97.45	6.50		3+09.6	3+07.1		#652		704 S. Ash		6-16-72	6-5-29
					+35	+32.5		#515		702 S. Ash		5-8-29	
3+70	104.13	97.52	6.61	3+70	+62.9	+60.4				701 S. Madison		4-19-73	1-4-27

#383 - Tap - 756 S Spruce - A.C. Hoff - 9-16-27  
 #1662 - Tap - 2310 E. Lincoln - A.J. Kine - 12-7-48 (2+66.5)  
 C 25228-845 Dew Wash Blvd - Seal off - al Henning 7-1-71 (0+30)

Plat on page 29