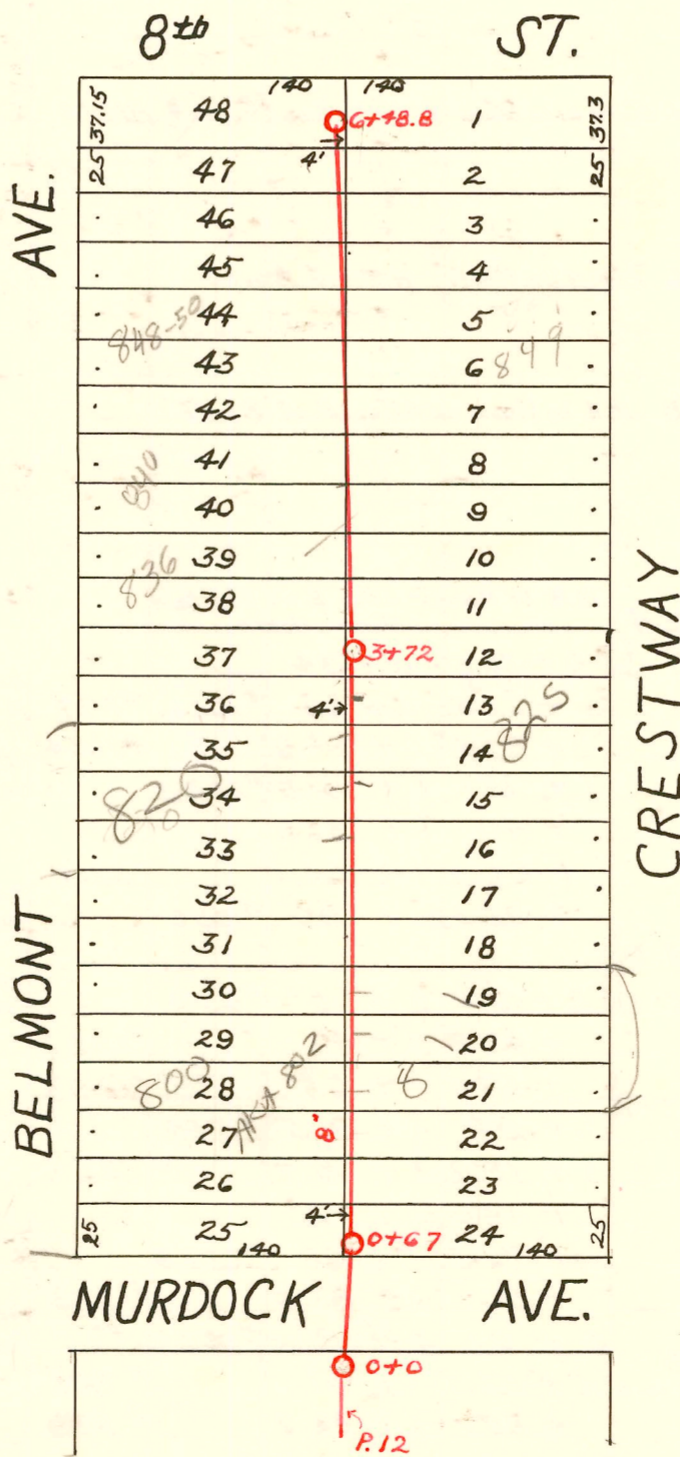
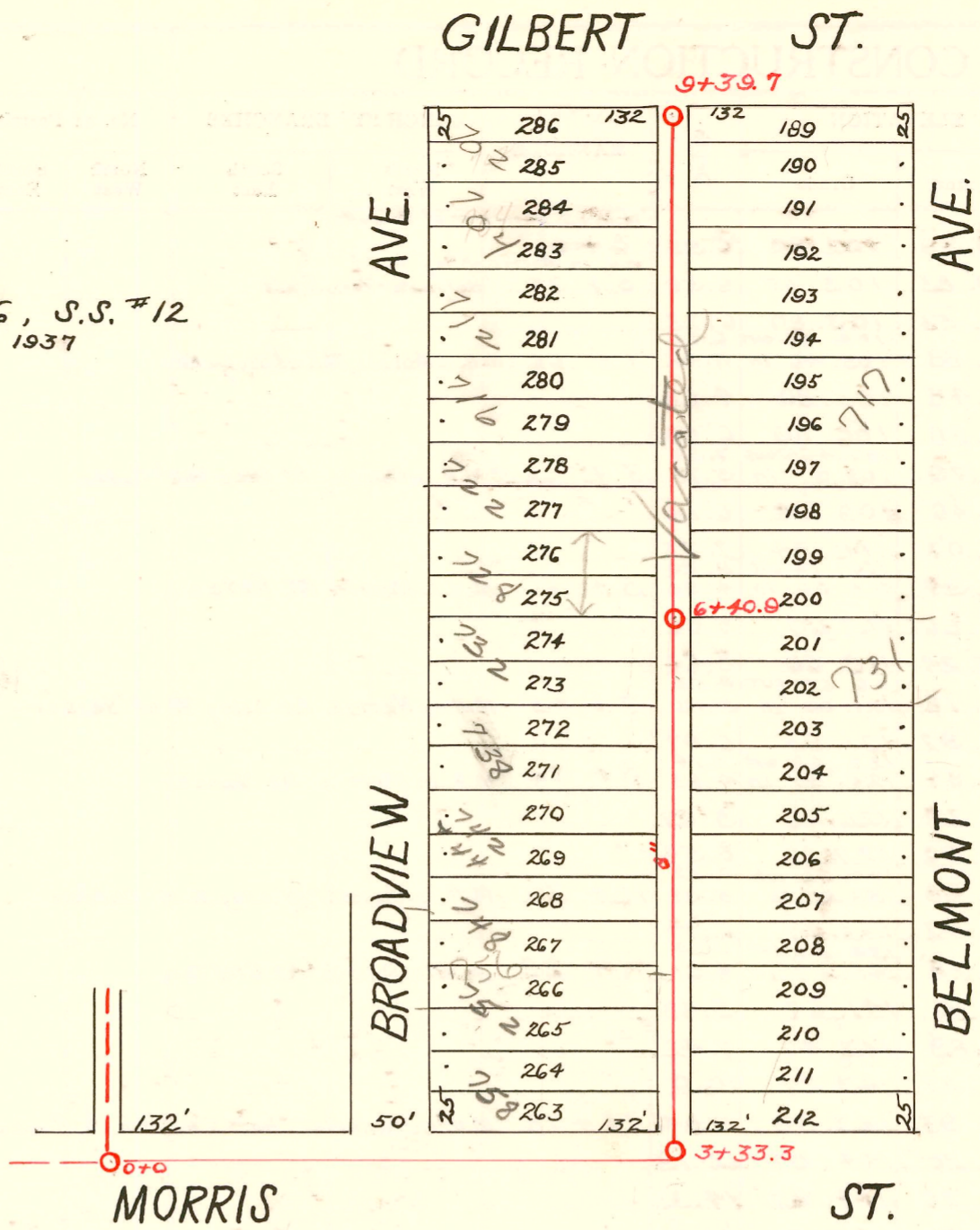


LAT. P, DIST. G, S.S. #12
W.B. CARTER - 1937



LAT. 26 - DIST. A - S.S. #12
H.L. MILES - 1927

1999-00074 6/28/99 731 S Belmont - Clearwater Exc - 4" SCH40 - Wye - tied to Wye w/donut 37' s of MH 6+40.9 (6+36.9)
ITWIN CO
2002-00618 3/7/02 820 N Belmont Wichita Exc - City Wye repair - 95.2' sof MH 3+72 (2+76.8) 1 dirco, 2 twin co, 3V22,
2 KICKOUTS, 1045, 1H45, 2 Fernco, 1 WYC