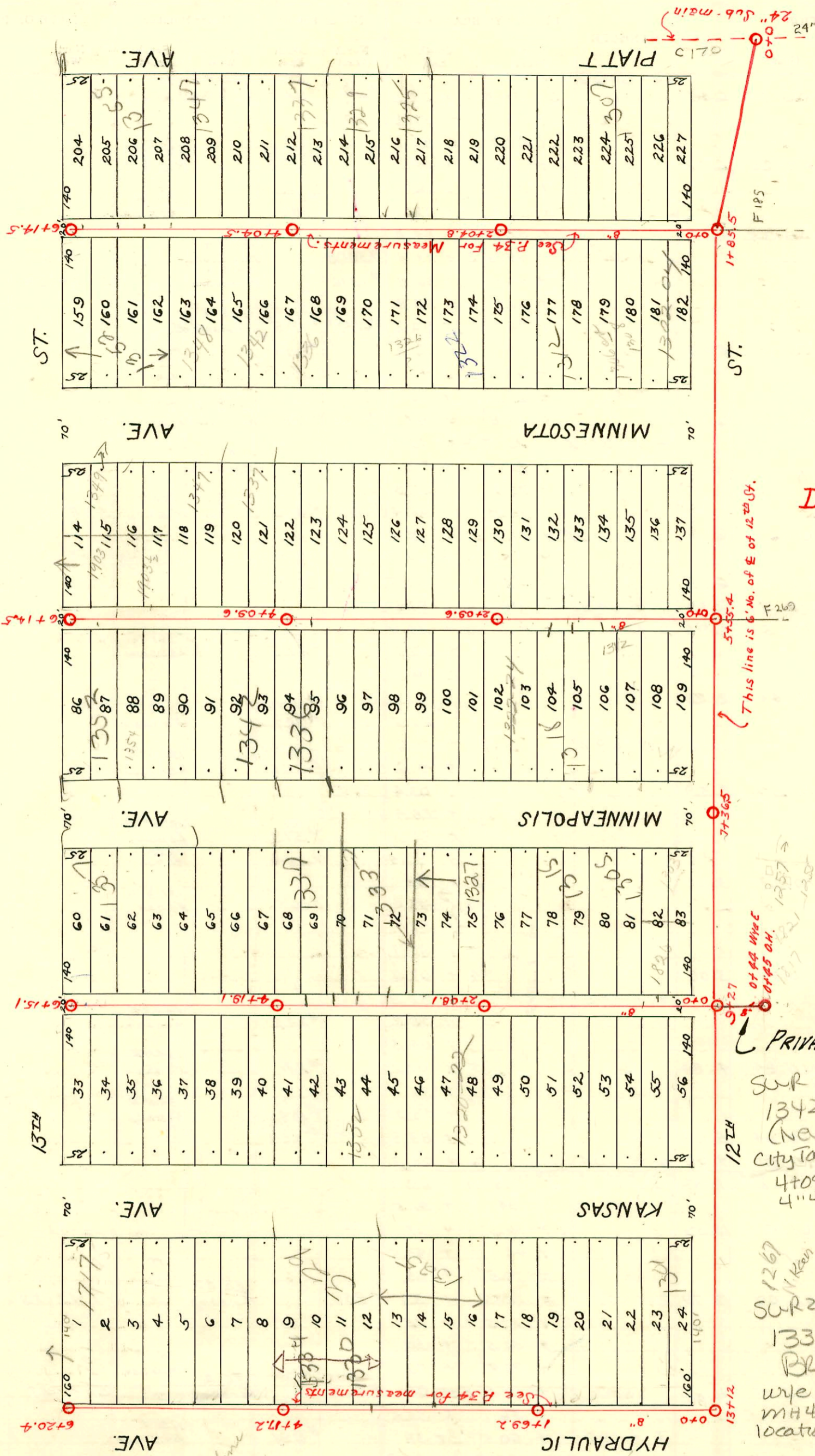


North



DIST. Q - S.S. No. 12
 H.L. Miles - 1926

- PRIVATE CONTRACT
- SUR 2003-01001 - 4/16/03
 1342 N Minneapolis
 (New House) Brand Pkg.
 City Tap 4" Predco 319' N of Mt
 4+09.6 (4+41.5) 2v22, 1H22,
 4" 40 PVC, TWINCO, 1H45
 - SUR 2003-00998 4/16/03
 1336 N Minneapolis
 Brand Pkg. 4" 40 PVC CITY
 wye repair 4" Predco 20.5' S of
 MH 4109.6 (3+89.1) tied to exist
 location, 1V45, 1H45, 1TWINCO
 - N/C 1333 N Minneapolis 9/27/02 Overnight 1TWINCO,
 1Predco Saddle 87' S of MH 4171.1 (3+32.0)
 - 2001-00723-4/21/01-1337 N Minnesota - A Good Pibr - 4" SCH 40
 wye w/donut 29' N of MH 4109.6 (4+38.6) 1TWINCO, 1V45,
 1H45
 - 2002-01454 5/23/02 1352 N. Minneapolis
 Brand Pkg. Predco Saddle 44.7' S of MH 6+14.5 (5+18.8)
 TWIN CO, 2V45
 - 2002-01707 6/18/02 1357 N Minneapolis
 Glower (addition to exist Bldg) - Predco Saddle
 80.9' S of MH 6+15.1 (5+34.2) TWIN CO, 4" SCH 40, 2H45,
 1V45 - Main Repair by CITY
 - 2002-02687 9/27/02 N/C 1337 N Minneapolis - Overnight
 (3.9' depth) Predco Saddle 34' S of MH 4171.1 (3+85.1)
 1TWIN CO

- N/C 2002-02686 9/27/02 1337 Minneapolis
 Overnight - 1TWIN CO, Predco Saddle
 44' N of MH 3108.1 (2+52.1)
- SUR 2003-01212 3-6-03 1318 N Minneapolis
 Brand Pkg 4" PVC City wye repair 4" Predco
 1.38' N of MH 0100, dirt alley cut, 1H45, 1V45, shallow

1649.7
 5 Hydraulic
 See G-179 for line
 across Pennsylvania

This line is 6' No. of E of 12th St.

07 44 WYE
 04 45 OH.
 12 57 S

See page 33 for plat

2001-02239-91401-1307 N Kansas Ave - Jones Swr - 4"sch40 - TWIN CO - Tied back to clay tile at East side of sidewalk
off of Hydraulic Aprx 30' from main

CONSTRUCTION RECORD

SERVICE RECORD

STATION	ELEVATION		Depth	MANHOLE	4-INCH "Y" BRANCHES		No. of Permit		House Number		DATE OF PERMITS			
	Ground	Grade			North West	South East	North West	South East	North West	South East	North West	South East		
LINE BETWEEN PIATT AND MINNESOTA 12 th ST. No.	0 + 0	115.80	109.15	6.65	M.H. in 12 th W. of Piatt 0 + 0	0 + 34.8	0 + 32.3	#711	#947	1302 N. Minnesota	1301 Piatt	4-20-71 4-3-53	1-26-88 10-18-47	
	1 + 0	115.67	109.25	6.42		+ 60.3	+ 57.8		#1356	1307 N. Piatt		6-27-95 9-24-29		
	2 + 0	115.89	109.35	6.54		+ 84.7	+ 82.2		#786	1311 R. Piatt		2-8-95 6-30-43		
					2 + 05.2	2 + 15.9	2 + 13.4	#3008		1318 N. Minnesota		1-10-50		
					2 + 04.8	2 + 41.3	+ 38.8	#1316		1322 N. Minnesota	1325 Piatt	6-24-54		
						+ 66.3	+ 63.8	#6141		1328 N. Minnesota	1323 Piatt	8-25-55	8-8-72 9-5-72 3-26-31	
						+ 92.5	+ 90.2	#944		1325 + 1325 1/2 Piatt		7-29-29	8-6-69 7-29-29 12-5-69	
					+ 43.5	+ 41			1336 N. Minnesota	1337 Piatt	4-13-27	10-15-43		
					+ 69.2	+ 66.7			1342 N. Minnesota		6-21-48			
					+ 95.8	+ 93.3	#260	#1147	1340 N. Minnesota	1347 Piatt	5-11-45	6-4-30		
					4 + 05.4	4 + 20.7	4 + 18.2	#205	#573	1349 N. Minnesota		9-18-68		
					4 + 04.5	+ 45.5	+ 43	#240		1355 N. Piatt		6-23-95		
					+ 70.3	+ 67.8								
					+ 95.9	+ 93.4								
					5 + 21.8	5 + 19.3								
					+ 47.2	5 + 44.7								
					+ 72.2	5 + 69.7								
					6 + 14.9	6 + 04	6 + 01.5							
LINE IN EAST PARKING OF HYDRAULIC 12 th TO 13 th	0 + 0	113.27	110.34	2.93	M.H. in 12 th W. of Hydraulic 0 + 0	0 + 24.9	0 + 24.9	#793	#325	1300 N. Kansas	1301 N. Kansas	5-15-56 3-7-97	4-29-27	
	1 + 0	112.72	110.44	2.28		1 + 01	+ 26.2	2001-02239	#167	1307 N. Kansas	R see next	9-6-01	3-15-27	
					1 + 69.2		+ 57.6	#166		1315 N. Kansas		12-30-71	3-15-27	
	2 + 0	112.93	110.54	2.39		2 + 03.4	+ 28.4		#513	1325 N. Kansas		6-15-49		
						2 + 75	+ 80.4		#134	1325 N. Kansas		3-3-27		
	3 + 0	113.65	110.64	3.01		3 + 08	+ 31.8		#165	1329 N. Kansas		3-15-27		
						+ 57.1	+ 82.1							
	4 + 0	113.80	110.74	3.06		4 + 07.9	+ 32.9		#222	1343 N. Kansas		4-1-27		
					4 + 17.2		+ 59.2		#211	1347 N. Kansas		3-28-27		
	5 + 0	115.68	110.84	4.84		5 + 07.2	+ 32.1		#1546	1345 N. Kansas		6-21-78		
						+ 58.2	+ 83.3		#164	1701 E. Kansas	13 th	5-10-39	6-7-66 3-15-27	
						6 + 20.4	6 + 08.3							
LINE G BET. PERSHING & DELLROSE & DOUGLAS So. Plat P. 36	0 + 0	172.59	161.0	11.59	M.H. in Douglas W. of Dellrose 0 + 0	0 + 68	0 + 65.5							
	1 + 0	175.09	161.5	13.59		+ 94	+ 91.5	6981						
	2 + 0	174.79	162.00	12.79		1 + 19.5	1 + 17							
						+ 46	+ 43.5							
						+ 70.5	+ 68							
	3 + 0	173.70	162.50	11.20		2 + 27.5	2 + 25	#856		120 S. Pershing		7-12-29		
						+ 52.5	+ 50							
						+ 77.5	+ 75							
						3 + 10.5	3 + 08	#362		115 S. Dellrose		6-8-36		
						+ 36	+ 33.5			136 S. Pershing		5-11-27		
					3 + 90	+ 60.5	3 + 58	#691		119 S. Dellrose		7-9-30		
					+ 85.5?	3 + 83?								
					4 + 00.5	3 + 98								
					+ 24.5	4 + 22	#864		139 S. Dellrose		9-16-30			
					+ 50.5	+ 48	#99		140 S. Pershing		9-16-41			
					5 + 02	4 + 99.5								
					+ 76.5	+ 74	#311		161 S. Dellrose		4-7-30			
					5 + 68	+ 27.5	5 + 25	#304		149 S. Dellrose		4-4-30		
					+ 54	+ 51.5								
					6 + 90.5	+ 88.0								
					+ 16.5	6 + 14	#369		151 S. Dellrose		4-15-30			
					+ 39.5	+ 37	#409		153 S. Dellrose		5-16-35			
									150 S. Pershing	171 S. Dellrose	7-24-31	6-28-37		
LINE G-A Bet. Pershing & Dellrose, So. of Douglas - Plat P. 36	0 + 0	174.91	162.05	12.86	0 + 0	0 + 23	0 + 23							
	0 + 76.5	176.72	162.29	14.43	0 + 76.5	+ 73								

#20 - Tap - 111 S. Dellrose - 1-13-31 - George Magruder
 #6729 - Tap - 133 1/2 Piatt - 10-19-53 - Artice Ray
 #2354 - Tap - 1330 N. Hydraulic - 10-25-54 - Artice Ray

95-17767 2-8-95 1311 N Piatt
 { - Rep - kept 3' section of clay
 tile line tied stubout from room
 addition into it 10' w of addition }