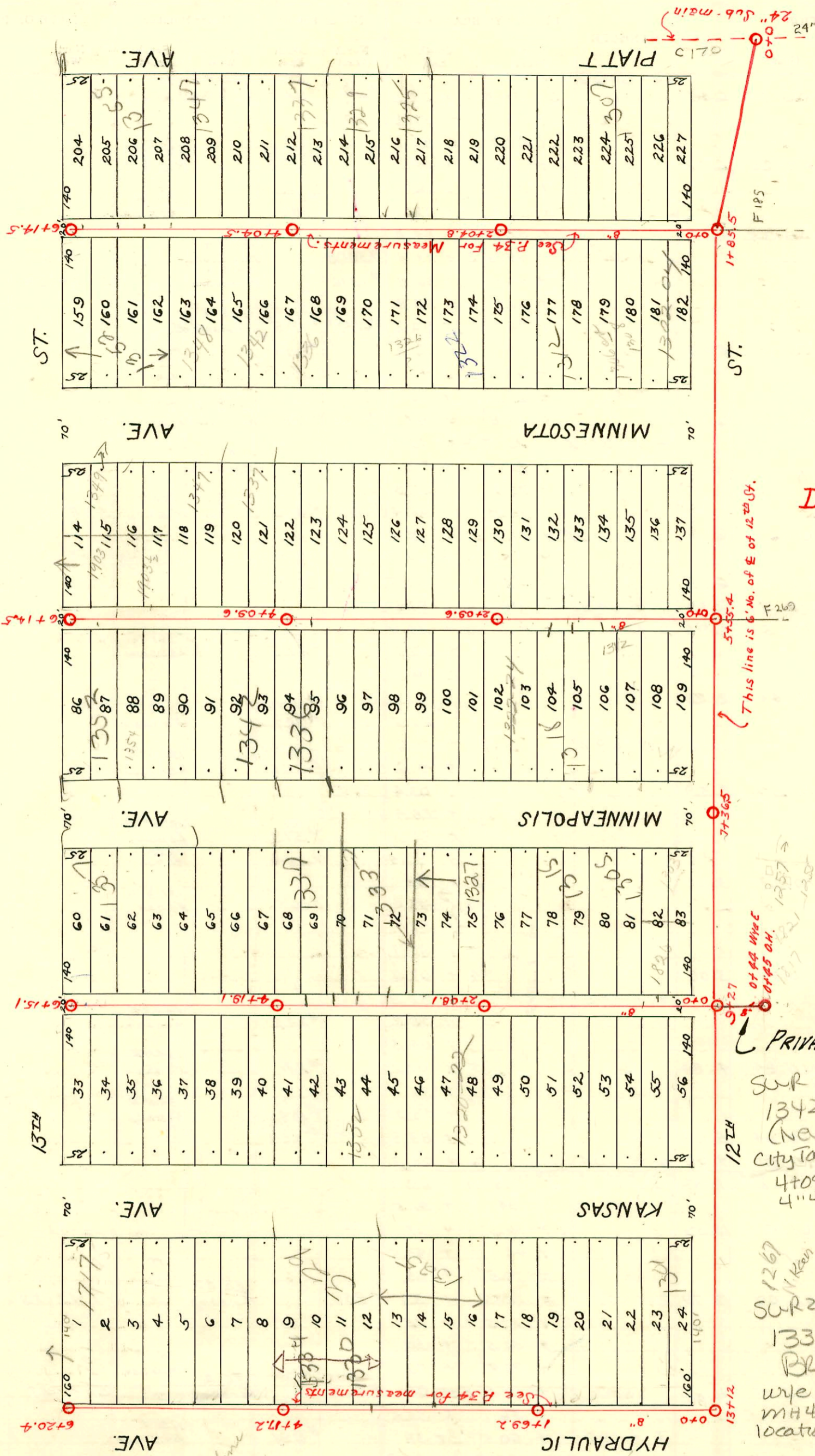


North
↑



DIST. Q - S.S. No. 12
H.L. Miles - 1926

PRIVATE CONTRACT
 SUR 2003-01001 - 4/16/03
 1342 N Minneapolis
 (New House) Brand Pkg.
 City Tap 4" Predco 319' N of Mt
 4+09.6 (4+41.5) 2v22, 1H22,
 4" 40 PVC, TWINCO, 1H45

1267
 11/11/03
 SUR 2003-00998 4/16/03
 1336 N Minneapolis
 Brand Pkg. 4" 40 PVC CITY
 wye repair 4" Predco 20.5' S of
 MH 4109.6 (3+89.1) tied to exist
 location, 1V45, 1H45, 1TWINCO

N/C 1333 N Minneapolis 9/27/02 Overnight 1TWINCO,
 1Predco Saddle 87' S of MH 4171.1 (3+32.0)
 2001-00723-4/21/01-1337 N Minnesota - A Good Pkbr - 4" SCH 40
 wye w/donut 29' N of MH 4109.6 (4+38.6) 1TWINCO, 1V45,
 1H45

2002-01454 5/23/02 1352 N. Minneapolis
 Brand Pkg. Predco Saddle 44.7' S of MH 6+14.5 (5+18.8)
 TWIN CO, 2V45

2002-01707 6/18/02 1357 N Minneapolis
 Glower (addition to exist Bldg) - Predco Saddle
 80.9' S of MH 6+15.1 (5+34.2) TWIN CO, 4" SCH 40, 2H45,
 1V45 - Main Repair by City
 2002-02687 9/27/02 N/C 1337 N Minneapolis - Overnight
 (3.9' depth) Predco Saddle 34' S of MH 4171.1 (3+85.1)
 1TWIN CO

N/C 2002-02686 9/27/02 1337 Minneapolis
 Overnight - 1TWIN CO, Predco Saddle
 44' N of MH 3108.1 (2+52.1)

SUR 2003-01212 3-6-03 1318 N Minneapolis
 Brand Pkg 4" PVC City wye repair 4" Predco
 1.38' N of MH 0+00, dirt alley cut, 1H45, 1V45, shallow

1649.7
 5 Hydraulic
 See G-179 for line
 across Pennsylvania

This line is 6' No. of E of 1220 St.
 5+35.4
 F 260

7+36.5
 0+44 WYE
 0+45 OH.
 1+257
 1+200

13+12
 137.2

137.2

137.2

137.2

137.2

137.2

CONSTRUCTION RECORD

SERVICE RECORD

STATION	ELEVATION		Depth	MANHOLE	4-INCH "Y" BRANCHES		No. of Permit		House Number		DATE OF PERMITS	
	Ground	Grade			North West	South East	North West	South East	North West	South East	North West	South East
LINE BETWEEN PIATT AND MINNESOTA 12 th ST. No.	0 + 0	115.80	109.15	6.65	M.H. in 12 th W. of Piatt 0 + 0	0 + 34.8 + 60.3 + 84.7	0 + 32.3 + 57.8 + 82.2	#711 #947	1302-N. Minnesota 1301 Piatt	4-20-71 4-3-53	1-26-88 10-18-47	
	1 + 0	115.67	109.25	6.42		1 + 11.1 + 35.2 + 62.4	1 + 08.6 + 32.7 + 59.9	95-98087 #1356 95-17767 #786	1307-50 Piatt 1311 Piatt		9-27-45 9-24-29 6-30-43	
	2 + 0	115.89	109.35	6.54		2 + 05.2 2 + 41.3 + 66.3 + 92.5	2 + 13.4 + 38.8 + 63.8 + 90.2	#3008 #1316 C34132 #6141 #145	1318 N. Minnesota 1322 N. Minnesota 1325 Piatt 1328 N. Minnesota 1323 Piatt	1-10-50 6-24-54	8-8-72 9-5-72 3-26-31 8-6-69 7-29-29 12-5-69	
	3 + 0	115.65	109.45	6.20		3 + 18.7 + 43.5 + 69.2 + 95.8	3 + 16.2 + 41 + 66.7 + 93.3	#260 #1147 #240	1346 N. Minnesota 1342 N. Minnesota 1349 Minnesota 1340 N. Minnesota	4-13-27 6-21-48	10-15-43	
	4 + 0	115.83	109.55	6.28		4 + 05.4 4 + 20.7 + 45.5 + 70.3 + 95.9	4 + 18.2 + 43 + 67.8 + 93.4	#205 #573	1347 Minnesota 1355 N. Piatt (Modular House)	5-11-45	6-4-30	
	5 + 0	115.94	109.65	6.29		5 + 21.8 + 47.2	5 + 19.3 + 44.7	5-9-87		6-23-95		
	6 + 0	115.94	109.75	6.19		6 + 14.5 6 + 14.9 6 + 04	6 + 01.5 + 50.7 + 76	#792 #325	1300 N. Piatt 1301 N. Kansas	5-15-56 4-29-27		
LINE IN EAST PARKING OF HYDRAULIC 12 th TO 13 th	0 + 0	113.27	110.34	2.93	M.H. in 12 th W. of Hydraulic 0 + 0	0 + 24.9 + 50.7 + 76	0 + 24.9 + 50.7 + 76	#167 #166	1307 N. Kansas 1315 N. Kansas	9-6-01 3-15-27	12-30-71 3-15-27	
	1 + 0	112.72	110.44	2.28		1 + 69.2	1 + 01 + 26.2 + 57.6 + 78.6	2001-02289 #167 #166	1325 N. Kansas 1325 N. Kansas	6-15-49 3-3-27	3-15-27	
	2 + 0	112.93	110.54	2.39		2 + 03.4 + 28.4 2 + 75 2 + 80.4	2 + 03.4 + 28.4 2 + 75 2 + 80.4	#513 #134	1329 N. Kansas	3-15-27		
	3 + 0	113.65	110.64	3.01		3 + 31.8 + 57.1 + 82.1	3 + 31.8 + 57.1 + 82.1	#165	1343 N. Kansas	4-1-27		
	4 + 0	113.80	110.74	3.06		4 + 07.9 + 32.9 + 59.2 + 84.3	4 + 07.9 + 32.9 + 59.2 + 84.3	#222	1347 N. Kansas	3-28-27		
	5 + 0	115.68	110.84	4.84		5 + 07.2 + 32.1 + 58.2 + 83.3	5 + 07.2 + 32.1 + 58.2 + 83.3	#211 #1546 #164	1345 N. Kansas 1701 E. Kansas 13 th	6-21-88 5-10-39 3-15-27		
	6 + 0	116.03	110.94	5.09		6 + 20.4	6 + 08.3					
LINE G BET. PERSHING & DELLROSE DOUGLAS So. Plat P. 36	0 + 0	172.59	161.0	11.59	M.H. in Douglas W. of Dellrose 0 + 0	0 + 68 + 94 + 91.5	0 + 65.5 + 91.5 + 91.5	6981				
	1 + 0	175.09	161.5	13.59		1 + 19.5 + 46 + 70.5	1 + 17 + 43.5 + 68	#856	120 S. Pershing	7-12-29		
	2 + 0	174.79	162.00	12.79		2 + 05 2 + 27.5 + 52.5 + 77.5	2 + 25 + 50 + 75	#200	115 S. Dellrose	6-8-36		
	3 + 0	173.70	162.50	11.20		3 + 10.5 + 36 + 60.5 + 85.5	3 + 08 + 33.5 + 58 + 83?	#362 #691	136 S. Pershing 119 S. Dellrose	5-11-27	7-9-30	
	4 + 0	173.88	163.0	10.88		4 + 00.5 + 24.5 + 50.5	4 + 98 + 22 + 48	#864 #99	139 S. Dellrose 140 S. Pershing	9-16-30 9-16-41		
	5 + 0	173.51	163.5	10.01		5 + 02 + 27.5 + 54	5 + 99.5 + 25 + 51.5	#311 #304	149 S. Dellrose	4-4-30		
	6 + 0	174.39	164.0	10.39		6 + 90.5 + 16.5 + 39.5	6 + 88.0 + 14 + 37	#369 #104 #322	151 S. Dellrose 153 S. Dellrose 150 S. Pershing	7-24-31	4-15-30 5-16-35 6-28-37	
LINE G-A Bet. Pershing & Dellrose, So. of Douglas - Plat P. 36	0 + 0	174.91	162.05	12.86	0 + 0	0 + 23 + 48 + 73	0 + 23 + 48 + 73	#409 #322	150 S. Pershing	8-25-71	8-17-71	

#20 - Tap - 111 S. Dellrose - 1-13-31 - George Magruder
 #6729 - Tap - 133 1/2 Piatt - 10-19-53 - Artice Ray
 #2354 - Tap - 1330 N. Hydraulic - 10-25-54 - Artice Ray

95-17767 2895 1311 N Piatt
 4" ABS 40
 - Rep - left 5' section of clay
 tile line at end stubout from room
 addition into it 10' w of addition

See page 33 for plat

2001-02239-91601-1307 N Kansas Ave - Jones Swr - 4"sch40- (TWIN CO- Tied back to clay tile at East side of sidewalk
off of Hydraulic Aprx 30' from main