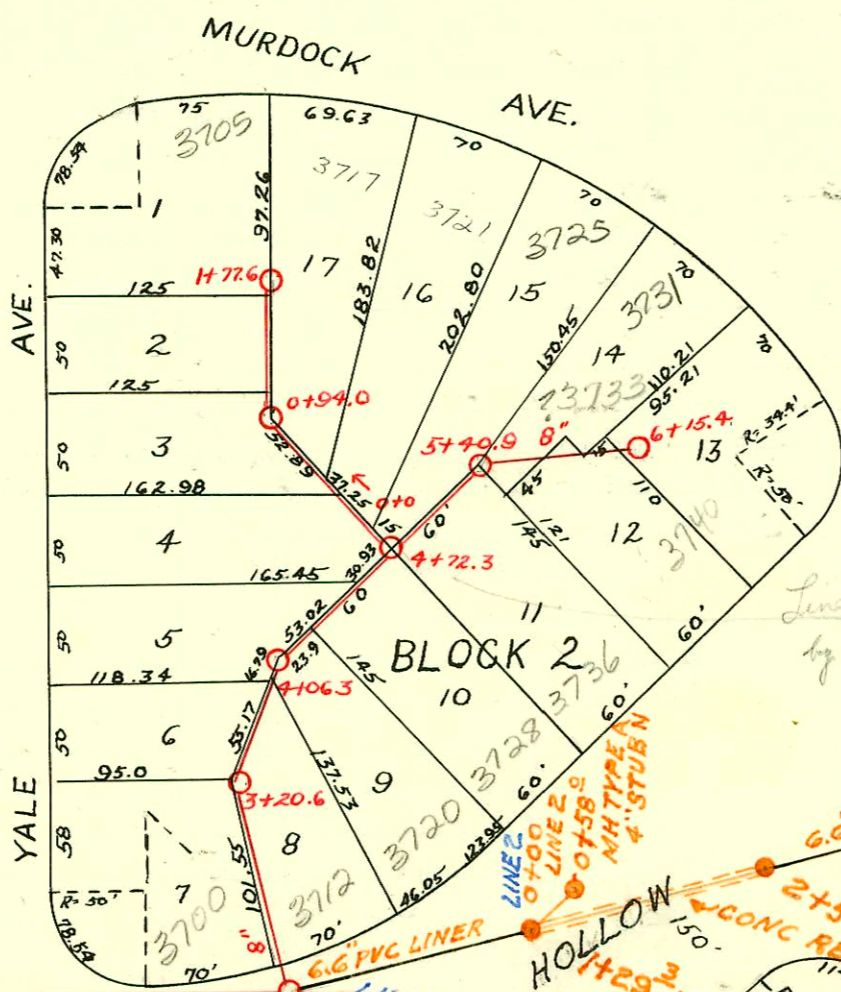


LAT. I - DIST. G - S.S. No. 12  
Johnson & Jones - 1930

MORRIS AVE.		0+0	AVE.	
25	146	15	130	145
	148			147
	150			149
	152			151
	154			153
	156			155
	158			157
	160			159
	162			161
	164			163
	166			165
	168			167
	170			169
	172			171
	174			173
	176			175
	178			177
	180			179
	182			181
	184			183
	186			185
	188			187
	190			189
	192			191
	194			193
	196			195
	198			197
	200			199
	202			201
	204			203
	206			205
	208			207
	210			209
	212			211
	214			213
	216			215
	218			217
	220			219
	222			221
	224			223
	226			225
	228			227
	230			229
	232			231
	234			233
	236			235
	238			237
	240			239
	242			241
	244			243
	246			245
	248			247
	250			249
	252			251
	254			253
	256			255
	258			257
	260			259
	262			261
	264			263
	266			265
	268			267
	270			269
	272			271
	274			273
	276			275
	278			277
	280			279
	282			281
	284			283
	286			285
	288			287
	290			289
	292			291
	294			293
	296			295
	298			297
	300			299
	302			301
	304			303
	306			305
	308			307
	310			309
	312			311
	314			313
	316			315
	318			317
	320			319
	322			321
	324			323
	326			325
	328			327
	330			329
	332			331
	334			333
	336			335
	338			337
	340			339
	342			341
	344			343
	346			345
	348			347
	350			349
	352			351
	354			353
	356			355
	358			357
	360			359
	362			361
	364			363
	366			365
	368			367
	370			369
	372			371
	374			373
	376			375
	378			377
	380			379
	382			381
	384			383
	386			385
	388			387
	390			389
	392			391
	394			393
	396			395
	398			397
	400			399
	402			401
	404			403
	406			405
	408			407
	410			409
	412			411
	414			413
	416			415
	418			417
	420			419
	422			421
	424			423
	426			425
	428			427
	430			429
	432			431
	434			433
	436			435
	438			437
	440			439
	442			441
	444			443
	446			445
	448			447
	450			449
	452			451
	454			453
	456			455
	458			457
	460			459
	462			461
	464			463
	466			465
	468			467
	470			469
	472			471
	474			473
	476			475
	478			477
	480			479
	482			481
	484			483
	486			485
	488			487
	490			489
	492			491
	494			493
	496			495
	498			497
	500			499



848 1/2" take  
SEWER MAIN  
CONFIRMED  
FRESH TANK  
15' TIE TO  
HOLYOKE ST  
LINCOLN ST  
01/19/08  
BK

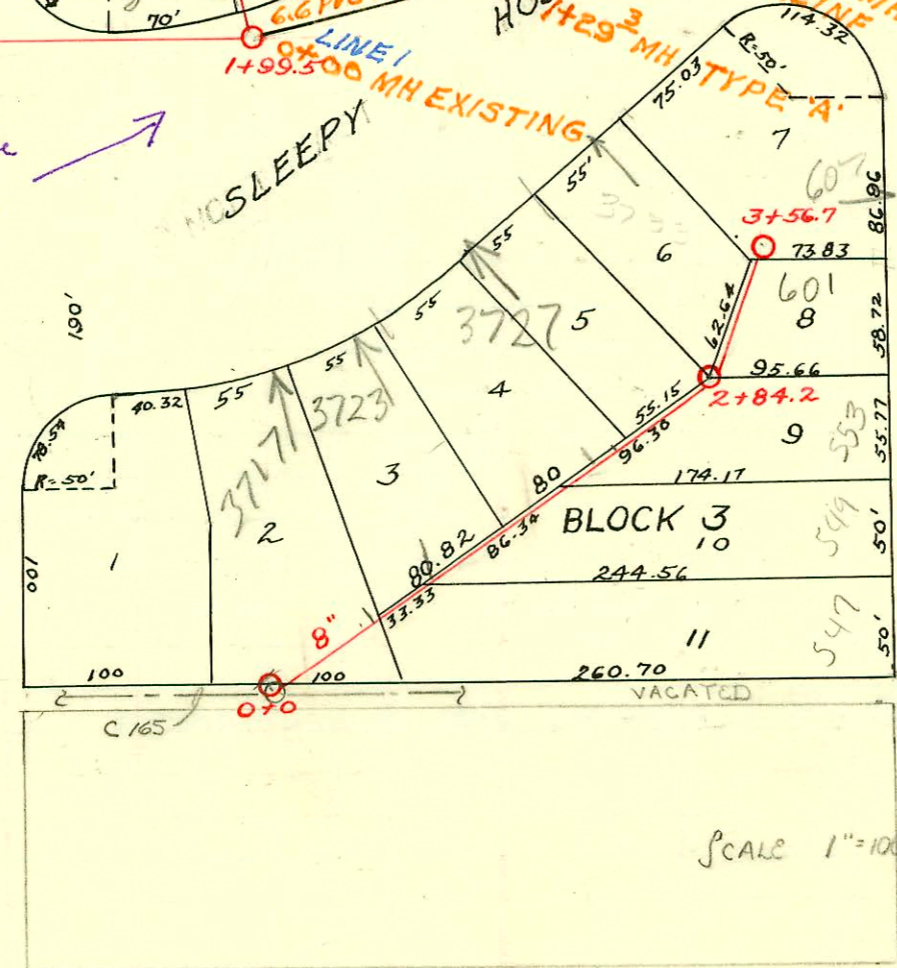
3306 Lincoln  
TU has shows  
3306 TIE TO  
NIS Line at 30'  
NY MH 67377

Line being reconstructed  
by B Carter 11/15/76

RECONSTRUCT PORTION LAT 8  
DIST D - S.S. No. 12  
BUILT BY: W.B. CARTER CONST. CO.  
PROJ. No. DBKL 575062  
BOOKED 3-1-77 FROM 1H 67

LAT. 8 - DIST. D - S.S. No. 12  
Johnson & Jones - 1930

This "PVC liner" looks like  
HDPE on tv inspection.  
-Ludonn-



2002-00088 110102 832 S Holyoke - Nelson Plbg - 4" sch 40 Predco Saddle 8.8' N of MH 4+22 (4+14.2) ITWIN CO, 3H45  
2002-01973 719102 807 S Rutan - Aaah NO Leaks - 4" sch 40 Replace all but lower 1.6', twin co @ house  
2003-02656-1011403 3727 E Sleepy Hollow - Roto Rooter - Pipe burst replacement - 4" PESDR17 - City wye repair  
61.9' SW of MH 2+84.2 (2+22.3) 2V45 +1 ITWIN CO

CONSTRUCTION RECORD

SERVICE RECORD

STATION	ELEVATION		Depth	MANHOLE	4-INCH "Y" BRANCHES		No. of Permit		House Number		DATE OF PERMITS	
	Ground	Grade			North West	South East	North West	South East	North West	South East	North West	South East
0+0	155.0	148.40	6.60	0+0								
1+0	153.0	148.50	4.50		1+49 N.							
					1+99.5							
2+0	152.0	148.60	3.40		2+45	2+48						
3+0	152.0	149.60	2.40	3+20.6	3+40.6	3+43.1	#585		710 S. Yale		6-10-30	
					+95.4	+98.6	#599		714 S. Yale		6-13-30	
4+0	156.90	150.60	6.30	4+06.3	4+08.7	4+11.7 N.						
					+33.7	+36.7						
					4+72.3	+82.1						
					5+05.8	5+08.5	#586		3736 N.E. Parkway		6-10-30	
5+0	161.74	151.60	10.14			+33.9						
					5+40.9	+59.7	+56.7	#219	3740 N.E. Parkway	3725 E. Murdock		4-24-31
					+84.7	+81.7	#60	#536	3730 N.E. Parkway	3733 E. Murdock	5-26-33	11-17-31
6+0	163.80	152.60	11.20		6+12.3	6+09.3						
6+15.4	164.82	152.73	12.09	6+15.4								
0+0	161.7	152.0	9.70	0+0	0+31.7	0+28.7	#471			3721 E. Murdock		9-17-31
					+60.7	+57.7						
					+83.7	+80.7	#96		730 N. Yale		3-3-31	
					0+94	+86.7	#569		724 N. Yale		6-4-30	
1+0	163.65	152.50	11.15			1+15.7						
						1+40.1	+37.1	#570	728 N. Yale		6-4-30	
						1+66.5	+63.5	#2075	3705 E. Murdock		3-2-49	
1+77.6	163.20	152.73	10.47	1+77.6								
0+0	162.37	150.60	11.77	0+0	N.E.	S.E.						
					0+55	0+52.5						
					+84.1	+81.6						
1+0	160.40	150.70	9.70		1+10.7	1+08.2						
					+36.2	+33.7	#327		3717 N.E. Parkway		6-3-31	
					+63.1	+60.6	#455		3723 N.E. Parkway		9-2-31	
2+0	159.30	150.80	8.50		+92.5	+90.0	#2005					
					2+22.3	2+19.8	#154		3727 N.E. R. see next	1011403		10-14-33
					+48.5	+46			Parkway Sleepy Hollow		2-28-34	
					2+84.2	+78.5	+76					
3+0	157.11	150.90	6.21		West	East						
						2+97.2						
					3+27.1	3+24.6	#571		3727 N.E. Parkway		6-4-30	
3+56.7	156.82	150.99	5.83	3+56.7	+57.6	+48.6	#581	#999	627 N. Roosevelt	627 N. Roosevelt	3-10-47	11-7-30
0+0	115.40	108.70	6.70	0+0	0+41.5	0+44	#668		801 S. Rutan		9-16-46	
					+68	+70.5	#983		802 S. Holyoke		10-30-30	
1+0	115.75	108.80	6.9		+97	+99.5	#3271		807 S. Rutan	see next	7-18-03	4-2-41
					1+26.5	1+29	#619		806 S. Holyoke		6-20-30	
					+52.5	+55	#620		810 S. Holyoke		6-20-30	4-2-41
2+0	114.80	108.90	5.9	2+09.9	+82.4	+84.9	#3370		813 S. Rutan		4-24-41	
					2+17.4	2+19.9	#641		818 S. Holyoke		6-25-30	
					+46.5	+49	#921		817 S. Rutan		4-24-41	
					+74	+76.5	#70		822 S. Holyoke		10-2-30	
3+0	114.0	109.0	5.0		3+02.5	3+05			826 S. Holyoke		2-12-31	
					+29.6	+32.1	#828	#3373	828 S. Holyoke	827 S. Rutan	8-28-30	4-24-41
					+59	+61.5	#3534		835 S. Rutan	see next	5-26-41	
					+84.7	+87.2	#171		832 S. Holyoke	see next	4-8-31	
4+0	113.90	109.10	4.8	4+23	4+14.2	4+16.7	#759	#3535	842 S. Holyoke	841 S. Rutan	7-29-30	5-26-41
					+40.8	+43.5	#147		848 S. Holyoke		3-28-31	
					+72.1	+74.6	#3538	#3537	846 S. Holyoke	851 S. Rutan	5-26-41	5-26-41
					+26.8	+29.3						
					+52.9	+55.4						
					+81.5	+84.0						
6+0	114.50	109.30	5.20		6+16.2	6+13.7						
6+37.7	114.51	109.34	5.17	6+37.7		+30.4	#2495		855 S. Rutan		5-18-48	

RECONST PORTION OF LAT 8 DIST D SS N#12

LINE 1	0+00	155.0	148.79	0+00 = 1+99.5
		153.0	148.98	OLD LINE
		155.9	149.14	1+29.3
		160.2	149.31	2+54.5
LINE 2	0+00	153.0	149.08	4+27.1
		154.4	149.20	0+00 = 1+29.3
				LINE 1
				0+58.0

- #201 - Tap - 625 N. Roosevelt - 5-9-31 - Vernon Shellenberger
- #470 - Tap - 3712 N.E. Parkway - 9-17-31 - Vernon Shellenberger
- #504 - Tap - 3720 N.E. Parkway - 10-17-31 - Connor & Ripstra
- #555 - Tap - 3728 N.E. Parkway - 12-16-31 - Vernon Shellenberger
- #14 - Tap - 3917 E. Murdock - 3-19-34 - Brodie Pfbg.
- #68 - Tap - 3700 N.E. Parkway - 4-21-32 - C.C.M. Kavulin
- #3372 - Tap - 821 S. Rutan - 4-24-41 - Chester Davidson (Tap at 2+92.9)
- #3536 - Tap - 845 S. Rutan - 5-26-41 - Chester Davidson (Tap at 4+93.5)
- #6228 - Tap - 3306 E. Lincoln - 10-23-51 - Kime Pfbg. Co

#358653 - 3726 Sleepy Hollow - 11/15/76 - Jack Stamp (Reconst.)

#358652 - 3728 Sleepy Hollow - 11/15/76 - Jack Stamp (Reconst.) (19' W of 0+00)