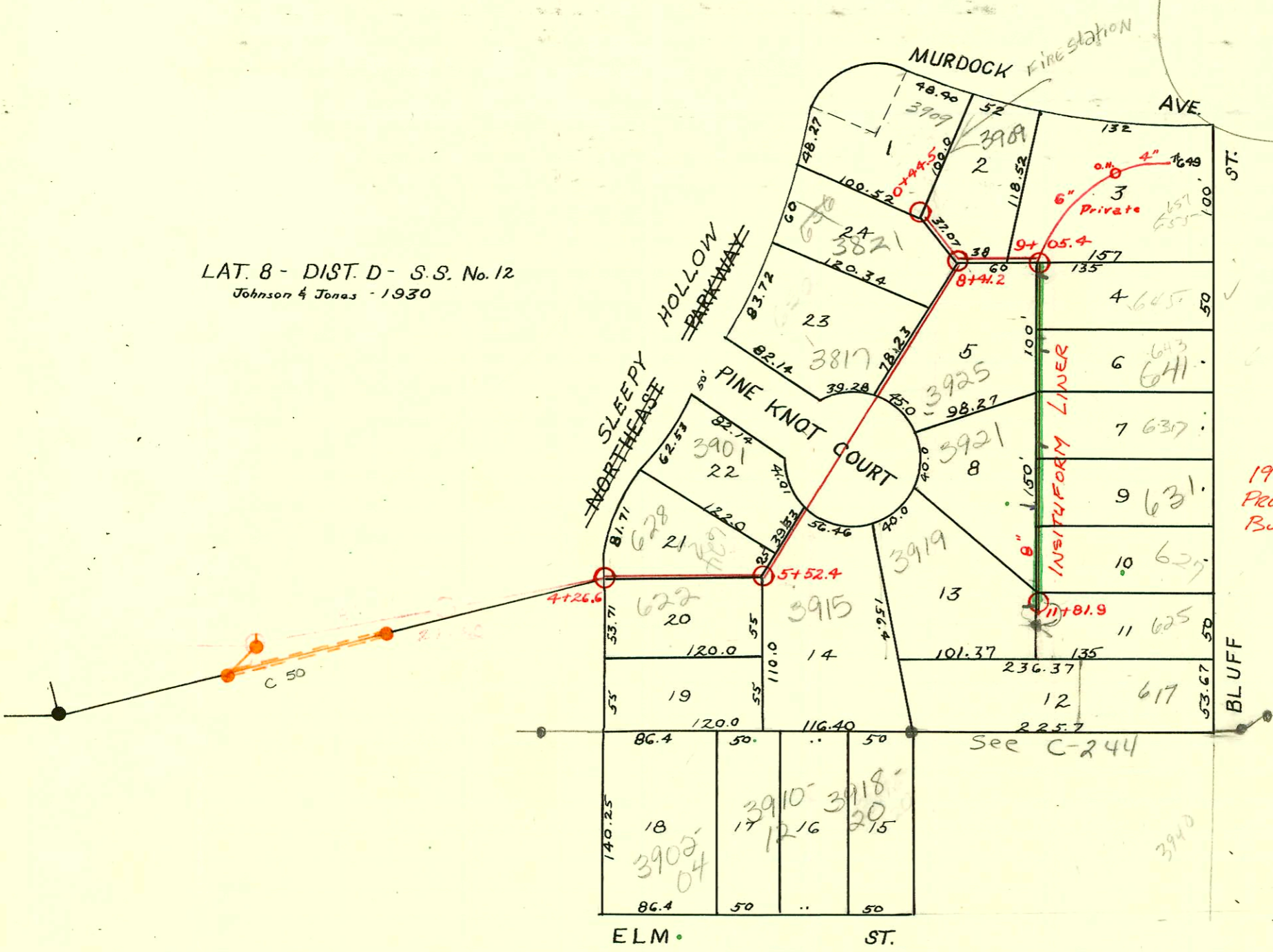


LAT. 8 - DIST. D - S.S. No. 12  
Johnson & Jones - 1930

Rear 5' of All  
Lots is dedicated  
Util. ESMT



1990 SAN. SEWER RECONST., Phs. III  
Proj. No. 468-82080 (630442)  
Built By INSITUFORM PLAINS, INC

2006-01261-5/19/06 - 423 N Bluff - repair - 45' south of mt, (2) pipe into formed, PVC saddle, (2) 220 4" sch 40 PVC - Arambula

98-0232660-7 12/8/98 3901 E Pine Knot Ct - Bammas - 4" sch 40 PVC -  
Tied back to within 6' of Main C.O. - 45M.

SwR 2002-02710 10-1-02 3901 E Pine Knot Ct. A Good Plumber - 2H45, 2U45, left 4" cast iron,  
2 combo's (opposing clo) only changed out last 5' short of main!  
ferro to CI

2003-01099-4/22/03-3901 E Pine Knot - A Good Plumber - 4" sch 40 PVC 2U45, city work repaired  
4" Predco 42R' NE of mt 5+52.4 (5+09.5)

CONSTRUCTION RECORD							SERVICE RECORD					
STATION	ELEVATION		Depth	MANHOLE	4-INCH "Y" BRANCHES		No. of Permit		House Number		DATE OF PERMITS	
	Ground	Grade			North West	South East	North West	South East	North West	South East	North West	South East
0+0	157.79	148.70	3.09	0+0	0+73							
1+0	157.71	148.80	2.91		1+22.5							
2+0	157.65	148.90	5.75		1+74	1+76.5						
					2+14.8							
3+0	159.0	149.0	10.0									
4+0	160.87	149.10	11.77	4+26.6								
5+0	161.63	149.33	12.30		5+05.9	5+03.4			736 N. Roosevelt		11-7-31	
					5+52.4	5+94.3	5+91.8	#524 #564	722 N. Roosevelt		6-3-30	
6+0	164.31	149.45	14.86		6+20.4	6+17.9						
7+0	160.82	149.65	11.17		7+26.9	7+24.4						
					+55.9	+53.4		#537	3817 N.E. Parkway		11-17-31	
					+85.9	+83.4						
8+0	162.83	149.85	12.98	8+41.2		8+13.7						
					8+63.6							
					+87.8							
					+99.7							
9+0	162.56	150.70	11.86	9+05.4	Y West	Y East						
						9+13.1		#42	645 N. Bluff		5-2-33	
						+43.3						
					+68.1	9+71.1		#906	637 N. Bluff		9-29-30	
					+93.1	+96.1						
10+0	165.91	151.75	14.16		10+10.5	10+13.5						
					+38.2	+41.2		#664	627 N. Bluff		7-1-30	
					+62.7	+65.7		#907	631 N. Bluff		9-29-30	
					4" SCH 40 CO 10+89.8	+92.8		2002-00205 #168	3921 Pine Knot Ct. R		1-24-02 4-19-37	
11+0	166.75	152.75	14.0		11+18.1	11+21.1						
					+45.6	+48.6		#523	3917 N.E. Parkway	617 N. Bluff	11-7-31	10-5-31
11+81.9	163.50	153.50	10.0	11+81.9		+73.4		#96	625 N. Bluff		5-1-35	
0+0	163.06	150.50	13.44	0+0	Same as 8+41.2 CITY 4" Predco 01216 Tap 0+12.9	0+10.4		2003-01027 2003-1107 #389	3821 Sleepy Hollow 656 N.E. Parkway		4-17-03 4-22-03 7-9-31	
0+44.5	161.40	150.95	10.45	0+44.5								

2003-00876 4/3/03 Rob Scott Pibg-4" PVC from house to garage - 2H22, Hwinco - no msmt

Tap - #701 - 724 N. Roosevelt - 7-11-30 - Threlfall Eng. Co.  
 Tap - #121 - 3924 Pine Knot Ct. - 7-23-32 - Vernon Shellenberger - Tap at 70' So. of M.H. 8+41.2  
 Tap - #368 - 649 N. Bluff - 9-15-36 - Vernon Shellenberger - Tap into M.H. 9+05.4  
 Tap - #1122 - 3915 Pine Knot Ct. - 5-23-50 - H.H. Creekmore  
 Tap - 5049 - 3909 E. Murdoch - 7-31-57 - Salsis