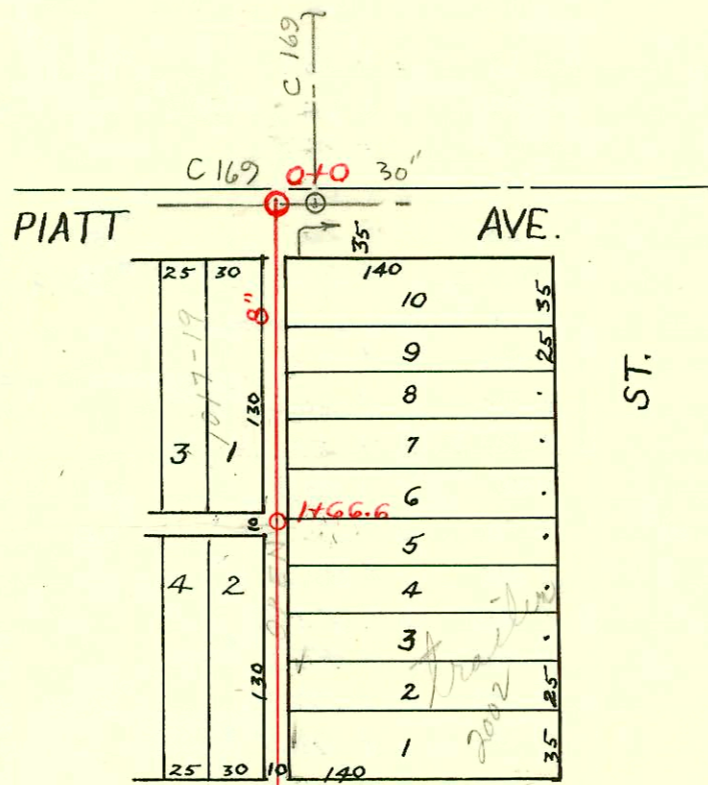
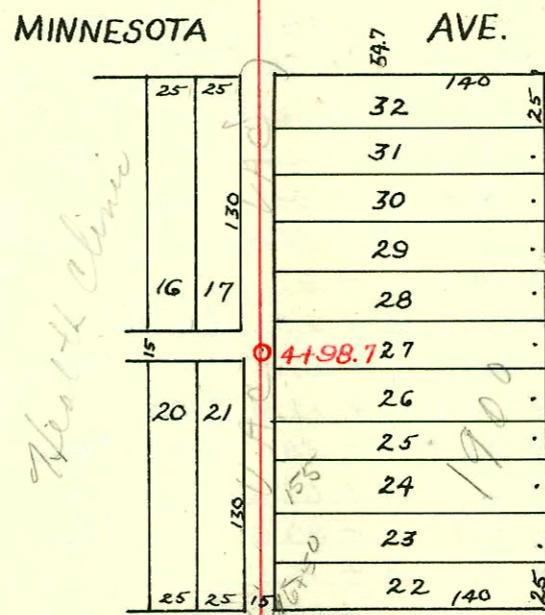


SCALE 1"=100'

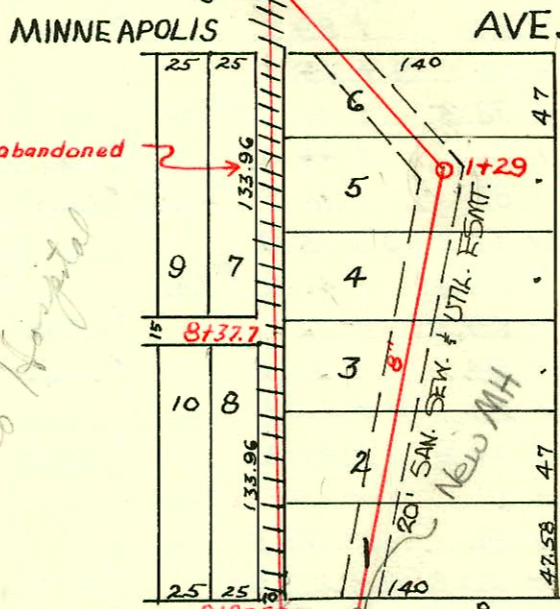


DIST. 7- S.S. #12
W.B. Carter - 1939



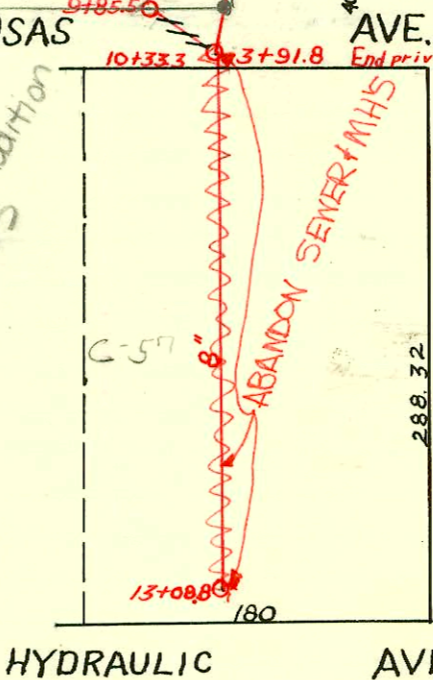
Begin Private Sanitary Sewer, Relocation of Dist. 3 S.S. #12 for County Hospital Area.

NOTE: This portion of old line abandoned



10+33.3 11+3+91.8 End private line

See N-194
New Sewer To
Lot 1, BIK. I, KUMIC Addition
Priv. Sew 537PPS



NINTH

CONSTRUCTION RECORD						SERVICE RECORD						
STATION	ELEVATION		Depth	MANHOLE	4-INCH "Y" BRANCHES		No. of Permit		House Number		DATE OF PERMITS	
	Ground	Grade			North West	South East	North West	South East	North West	South East	North West	South East
0+0	115.40	107.45	7.95	0+0		0 + 57.6						
1+0	115.50	107.55	7.95		0 + 84.0	+ 87.0	#133		1013 Platt		3-16-50	
					1 + 17.7	1 + 20.7	#670		1017-19 1025 Platt		6/23/72	9-16-46
				1+66.6		+ 50.8						
2+0	115.10	107.65	7.45			+ 77.6	#701		Seal off		5-26-68	
					2 + 02.7	+ 27.8	#1546		2012 E. 9th		5-15-44	
						+ 53.5						
						+ 81.0	#433		Seal off		8-8-67	
3+0	115.00	107.75	7.25		3 + 98.8	3 + 74.6	#868		2002 E. 9th		1-15-42	
							#1035		2002 E. 9th		10-22-68	
							#11036		2002 E. 9th		10-22-68	
4+0	115.00	107.85	7.15		4 + 01.8	4 + 01.8	#1840		1910 E. 9th		9-18-39	
					4 + 24.4	+ 27.4						
						+ 52.3	#1875		1906 E. 9th		10-5-39	
				4+98.7		+ 76.4						
5+0	114.80	107.95	6.85		5 + 22.0	5 + 22.0	#827		1904 E. 9th		12-26-41	
					5 + 44.3	+ 47.3	#1636		1032 N. Minneapolis		7-1-44	
					+ 67.3	+ 70.3	#2075		1018 N. Minneapolis		10-17-49	6-3-41
					+ 95.1	+ 98.1			1902 E. 9th			
6+0	114.60	108.05	6.55		6 + 20.7	6 + 20.7	#2881		1900 E. 9th		11-19-40	
7+0	115.00	108.15	6.85		7 + 05.0	7 + 05.0	1392		1900 E. 9th		9-30-80	
					7 + 35.3	+ 38.3						
					+ 56.4	+ 59.4						
						+ 83.4						
8+0	115.10	108.25	6.85		8 + 06.0	8 + 06.0						
					+ 34.7	+ 34.7						
				8+37.7		+ 60.8	#1863		1808 E. 9th		9-28-39	
					8+82.0	+ 85.0						
9+0	114.20	108.35	5.85		9 + 10.0	9 + 13.0						
						+ 34.3						
						+ 56.8						
10+0	113.00	108.47	4.53	9+ 85.5								
				10+ 33.3		10+ 40.3						
					10+ 71.1	+ 74.1	#9064		1730 E. 9th		6-11-68	
					+ 89.9	+ 92.9	#1413				2-24-44	
11+0	112.60	108.66	3.94		11 + 16.4	11 + 16.4	#9063		1716 E. 9th		6-11-68	
						+ 41.2	#2303		1714 E. 9th		5-9-49	
						+ 66.3	#9062				6-11-68	
						+ 86.7	#1857				9-26-39	
12+0	111.60	108.76	2.84		12+ 12.0	12 + 15.0	#701		Seal off		5-26-68	
					+ 36.4	+ 39.4	#1856		1712 E. 9th		9-26-39	
						+ 63.7	#2881		1706 E. 9th		4-30-41	
						+ 87.7	#1220		1012 N. Hydraulic		11-5-43	
	112.00	108.87	3.13	13+ 08.8								

RELOCATION DIST. 7, S.S.#12 - PRIVATE JOB FOR COUNTY HOSPITAL AREA Final in bk. M-14

STATION	Ground	Grade	Depth	MANHOLE
0+00	114.4	108.05	6.35	0+00
1+00	114.9	108.15	6.75	
1+29	114.8	108.18 in 108.20	6.62	1+29
2+00	114.4	108.27	6.13	
3+00	113.8	108.37	5.43	
3+91.8	113.0	108.46	4.54	3+91.8

No wyes built

S.O. C33127 - 1018 N. Minnesota - 6/23/72 - at Kenning (2+57.6)
 C28946 - 1861 E. 15th - Geo. Fran. 11-11-71 (2 new M.A. built by J.P. Carter)

#1287 - Top - 1024 N. Minnesota - 3-24-42 - C.C. McLaughlin
 #2252 - Top - 1028 N. Minnesota - 7-8-42 - C.C. McLaughlin - \$10.00 Special Fee Paid.
 #1909 & 1910 - Set 2 wyes County Hospital - 7-16-52 - Ripstra-Turder Co.
 #3837 - Set wye - 1021 N. Minneapolis - County Hospital - 1-22-53 - Ripstra-Turder Co.
 #2792 - Set wye - 1900 E. 9th - Hatched Center 10-17-58
 #2793 - Top - 1900 E. 9th - Hatched Center 10-17-58
 #2794 - Top - 1900 E. 9th - Hatched Center 10-17-58
 10480 Top - 6-8-50 Plipped 0+72

B2149 - Top (trailer) 1900 E. 9th - Hatched Center 10-14-64 (3+64.8)
 C11034 Seal off 1900 E. 9th - Hatched Center 10-22-68 (3+64.8)

Top C22786 - 1900 E. 9th St (car wash) - Relat. fast - 2-1-71 (top 44 ft. East of M.H. 0+0 in Minneapolis)