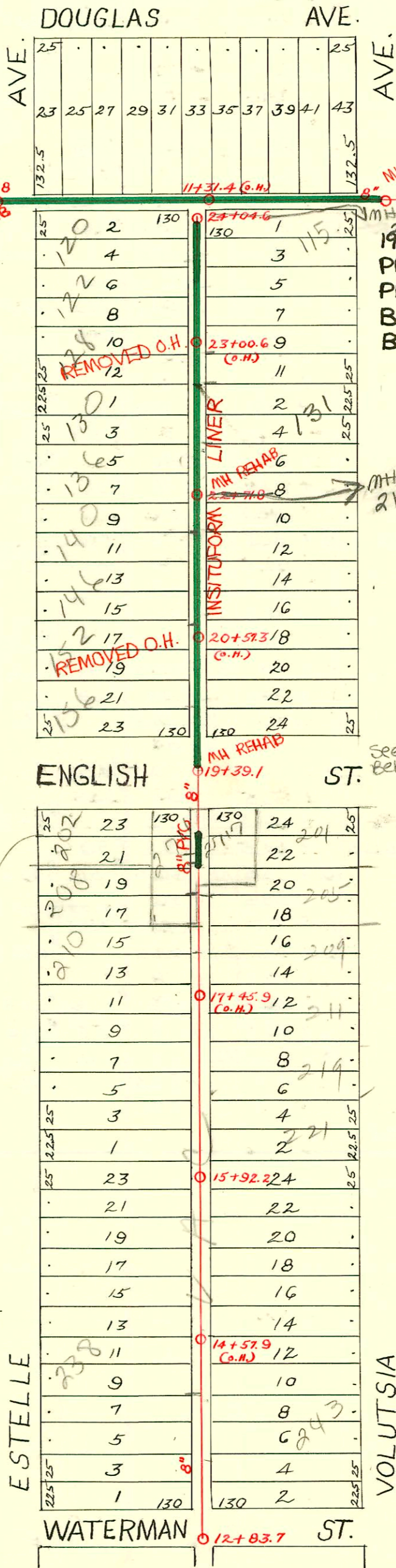


RECONNECTIONS

STATION	ADDRESS	DIRECTION
12+32.3	2725 E. Douglas	North
11+08.9	2711 E. Douglas	North
10+74	2705 E. Douglas	North
10+22.9	2701 E. Douglas	North



1992 SANITARY SEWER REHABILITATION PROGRAM - PHASE I
 PROJ. NO. 468-82220 (631879)
 BUILT BY INSITUFORM PLAINS, INC.
 BOOKED 3-17-93 FROM AS BUILTS

DIST. A - S.S. No. 12
 1912

RECONNECTIONS

STATION	ADDRESS	DIRECTION
23+74.9	120 S. Estelle	West
23+41.9	117 S. Volutsia	East
23+22.8	122 S. Estelle	West
22+88.5	128 S. Estelle	West
22+71.1	121 S. Volutsia	East
22+63.8	130 S. Estelle	West
22+36.3	131 S. Volutsia	East
22+13.6	136 S. Estelle	West
21+88.8	135 S. Volutsia	East
21+40.3	140 S. Estelle	West
21+37.4	143 S. Volutsia	East
21+15.1	146 S. Estelle	West
20+88	145 S. Volutsia	East
20+65.8	152 S. Estelle	West
20+62.9	153 S. Volutsia	East
19+93.4	156 S. Estelle	West
19+90.8	157 S. Volutsia	East

1995 SANITARY SEWER REHABILITATION PROGRAM - PHASE V
 PROJ. NO. N/A (621144)
 BUILT BY INSITUFORM PLAINS, INC.
 BOOKED 1/8/96 FROM AS BUILTS

2711 E English
 Priv. Sewer easement granted
 to 202 S Estelle 9/10
 3/8/99. To maintain
 the exist. sewer line
 across lot to city

2002-00070 118/03 131 S Volutsia - Reddy Rootr- City Tap 70' N of MH 2174.1 (22+44.1) 2 dir CO, 4H45, 1V45

CONSTRUCTION RECORD						SERVICE RECORD						
STATION	ELEVATION		Depth	MANHOLE	4-INCH "Y" BRANCHES		No. of Permit		House Number		DATE OF PERMITS	
	Ground	Grade			North West	South East	North West	South East	North West	South East	North West	South East
12+0	111.05	104.34	6.71	12+83.7								
13+0	110.75	104.59	6.16		13+28.5	13+26	#7				1-4-18	
					+53.5	+57		#355				6-14-18
					+79	+76.5						
14+0	110.99	104.84	6.15		14+04.5	14+02	#889	#2675 #826	238 E. Estelle	243 E. Volusia	12-5-17	2-4-11 10-10-11
					+30	+27.5						
					+55.5	+53	#5	#428			1-3-17	8-1-13
					+78.5	+76						
15+0	111.09	105.09	6.00		15+04	15+01.5	#4	#98			1-3-17	3-5-13
					+29.5	+27	#99	#538			3-3-11	9-30-13
					+54.5	+52		#311				5-20-14
					+80	+77.5	#162				3-17-11	
				15+92.2								
16+0	111.39	105.34	6.05		16+05	16+02.5						
					+32	+29.5	#763	#239			8-23-21	5-2-18
					+58	+55.5	#640	#505			10-28-14	9-11-13
					+83	+80.5	#398				8-12-15	
17+0	111.69	105.59	6.10		17+08	17+05.5						
					+33.5	+31		#297		211		6-25-12
					+59.5	+57						
					17+85	+82.5	#178	#55		207 S. Estelle	4-5-17	1-30-17
18+0	112.09	105.84	6.25		18+09.5	18+07						
					18+35	18+32.5	#281	#764			5-8-14	7-1-22
					18+60	18+57.5	#104	#458		See Below	3-6-11	10-28-36
					18+83.5	18+81		#115		Estelle English		3-7-11
19+0	112.39	106.09	6.30	19+39.1	19+82.5	19+80	#766				10-11-20	
20+0	112.93	106.34	6.59		20+04.5	20+02		#1134				8-8-19
					+30	+27.5						
					20+55	+52.5	#938	#452			5-22-19	5-16-11
					20+80.5	+78		#86				3-12-18
21+0	113.23	106.50	6.64		21+06	21+03.5		#69				2-15-11
					21+31.5	+29	#467	#295		140 S. Estelle	8-3-14	5-14-14
					21+56.5	+54	#1092				10-11-28	
					21+83.5	+81	#125	#377			3-9-11	6-9-17
22+0	114.33	106.84	7.49		22+06.5	22+04						
					22+31.5	+29	#563	#225		131 S. Volusia	10-13-13	6-1-16
					22+55	+50.5	#1058	#386			7-10-19	5-28-13
					22+82.5	+80	#155				3-10-21	6-25-14
23+0	114.73	107.09	7.64		23+11.5	23+09	#496					
					23+39	+36.5		#128				3-9-11
					23+64.5	+62						
					23+90.5	+88	#673	#306		115 S. Volusia	8-31-20	3-30-66
24+0	114.53	107.34	7.19	24+04.6								
9+0	113.49	105.15	8.34	9+68	North							
10+0	113.99	105.50	8.49		10+00.5							
					+25.5							
					+50.5							
					+76							
11+0	113.99	105.85	8.14		11+01		#1398				11-24-19	
					+27		#265					
					+53							
					+78.5							
12+0	114.69	106.20	8.49		12+01.5							
					+27.5		3325				12-13-56	
					+50							
				12+96.5								

2001-00095-11/6/01- 202 S Estelle - Leak No Leaks - 4" SCH40, Exist 6" Line - Tied to 6" PVC LINE RUN APRX 14Rago - 2H45

#844 - Tap - 11-13-20 -
 #190 - Tap - 8-21-27 - 2705 E. Doug Ins
 #657 - Tap - 8-21-27 - 2705 E. Doug Ins
 #1522 - Tap - 10-24-29 - 2711 E. Doug Ins
 #1724 - Tap - 9-6-44 - 237 S. Volusia - Wichita P/bg. Co.
 #2097 - used old connection - 2711 E. Doug Ins - 9-21-56 - Gil Process
 #C14361 - Tap - 219 S. Volusia - Darrell Williams - 6-5-69 (16+64.5)