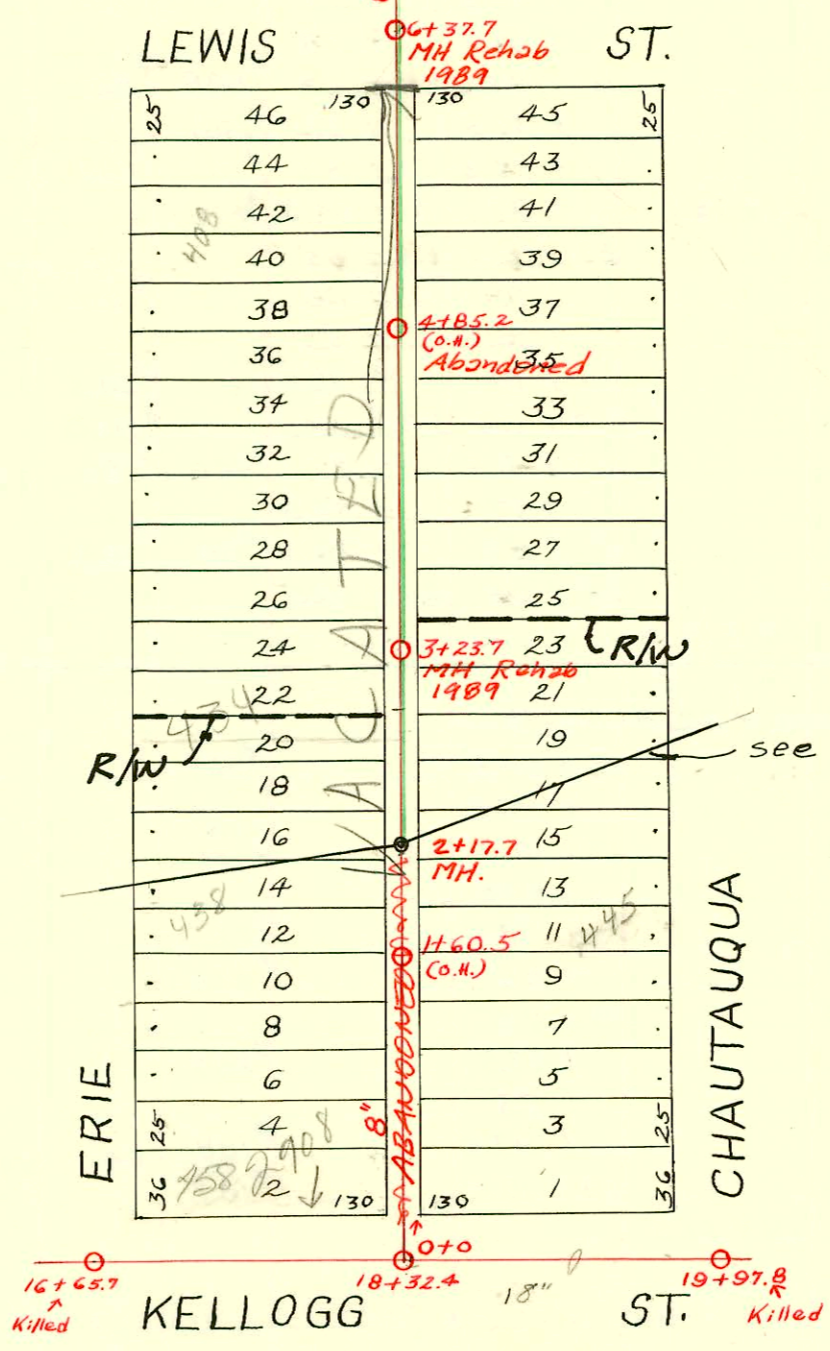
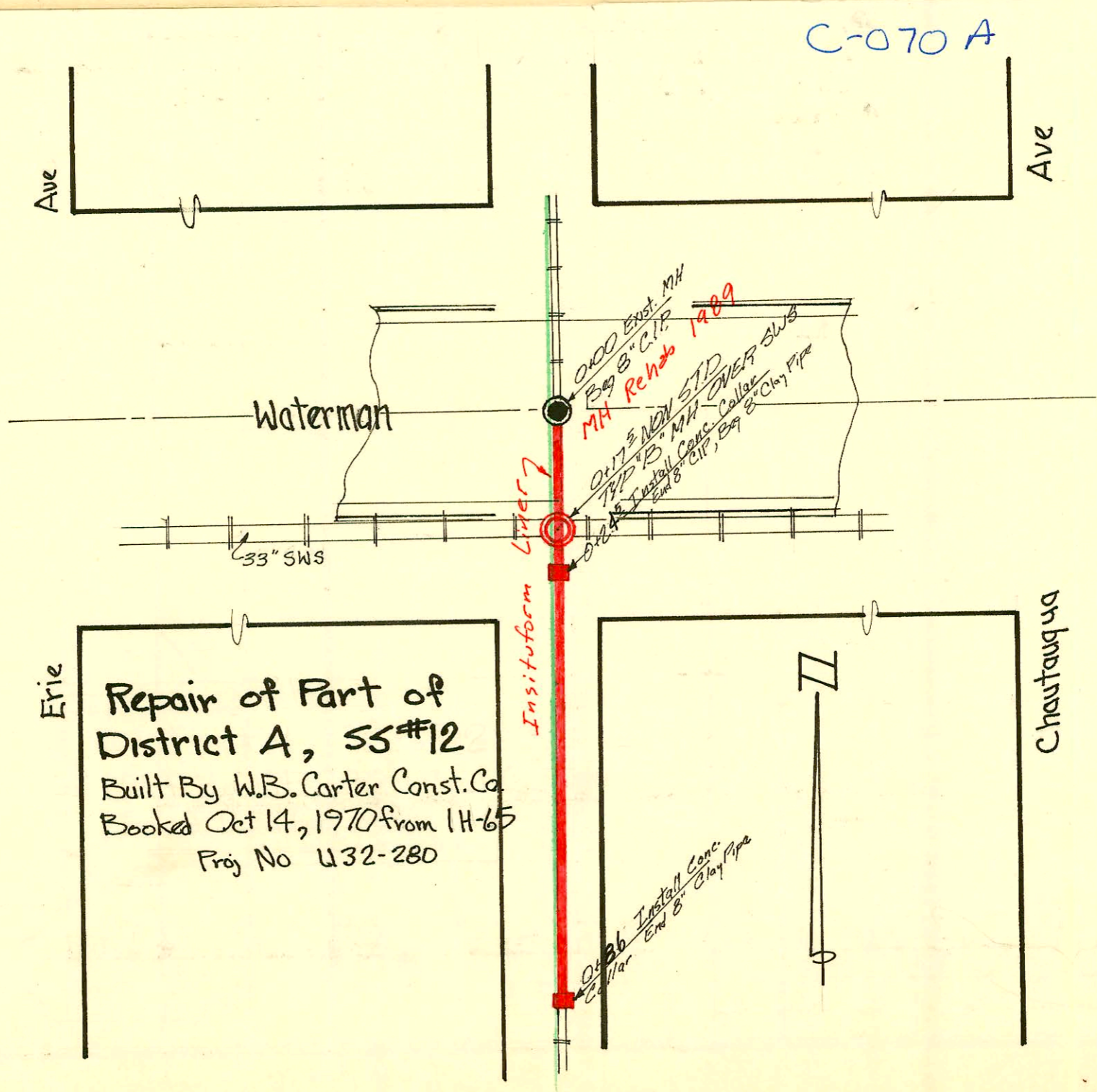


DIST. A. - S.S. No. 12
1912

1988 Sanitary Sewer Reconstruction
Program (Phase 2)
46B-81BB6 (600817)
Built By Insituform Plains



see C15A



CONSTRUCTION RECORD

SERVICE RECORD

STATION	ELEVATION		Depth	MANHOLE	4-INCH "Y" BRANCHES		No. of Permit		House Number		DATE OF PERMITS	
	Ground	Grade			North West	South East	North West	South East	North West	South East	North West	South East
0+0	110.37	103.00	7.37	0+0	0+42 +67.5 +93	0+39.5 +65 +90.5	#1527 #1327 #1017	#1161 #1428 #1068	450 446 445	457 457 445	7-21-60 7-21-60 5-5-24	9-8-22 8-12-23 2-5-75
1+0	110.07	103.30	6.77	1+0	1+18.5 +43.5 +69 +94	1+16 +41 +66.5 +91.5	#1400 #1345 #1477	#703 #4705 #1453	446 445 438	445 438 438	10-23-22 1-23-73 11-6-22	4-7-24 10-17-74 8-15-21 10-30-22
2+0	110.17	103.60	6.57	2+0	2+17.5 +42.5 +68 +93.5	2+15 +40 +65.5 +91	#1345 #201 #821	#46380 #265 #78 #811	436 435 425	435 435 425	11-12-22 2-9-23 5-29-23	8-27-74 5-12-31 3-26-12 7-5-29
3+0	110.17	103.90	6.27	3+23.7	3+19 +46 +72.5 +97	3+16.5 +43 +69 +94.5	#1462	#1218 #921			11-2-22	8-16-23 7-31-22
4+0	110.37	104.20	6.17	4+0	4+22 +46.5 +72 +98	4+19.5 +44 +69.5 +95.5	#345 #539 #1182	#770			4-18-22	7-3-22 8-31-18 9-13-22
5+0	110.67	104.50	6.17	5+0	5+23.5 +48.5 +76.5	5+21 +46 +74 +98	#1019 #193	#473 #222 #300			8-16-22	5-10-22 4-20-17 3-17-22
6+0	110.97	104.80	6.17	6+37.7	6+00.5 +80.5	6+78						
7+0	111.36	105.10	6.26	7+0	7+06 +30.5 +56 +81.5	7+03.5 +28 +53.5 +79	#69 #935 #79	#430 #647 #146			2-13-17 5-22-19 2-23-11	5-20-21 7-26-21 2-28-20
8+0	111.76	105.40	6.36	8+0	8+06 +31.5 +56 +81	8+03.5 +29 +53.5 +78.5	#125 #334	#310 #1102			3-26-18 1-25-21	4-20-21 7-26-19
9+0	112.16	105.70	6.46	9+0	9+06.5 +31 +58.5 +83.5	9+04 +28.5 +56 +81	#1415 #705	#1172 #345 #345			10-24-22 5-9-23	3-10-20 6-19-13 6-19-13
10+0	112.16	106.00	6.16	10+0	10+08 +33.5 +59 +84.5	10+05.5 +31 +56.5 +82	#1686 #484 #155	#829 #63 #1337			11-15-23	10-11-11 8-14-14 2-15-11 3-29-17
11+0	112.36	106.30	6.06	11+0	11+10 +35 +61.5 +86	11+07.5 +32.5 +59 +83.5	#784 #476				3-20-19 8-6-18	10-29-19
12+0	112.46	106.60	5.86	12+0	12+11 +36.5 +59.5	12+08.5 +34 +57	#213	#254			3-24-20	5-2-17

18+0	109.91	102.21	7.71	18+32.4								
19+0	110.10	102.44	7.68		+97.8		#1186					8-27-19
20+0	110.21	102.67	7.58									

Repair of Part of District A SS#12

0100=12+86

0100 113.4 106.62 6.8 Exist. MH Beg 8" CIP

0+17 113.1 106.69 6.4 0+17⁵ NON STD TYP B" MH over SWS

0+24 0+33 0+33 0+33 Conc Collar End 8" CIP Beg 8" Clay Pipe

0+86 111.6 105.76 5.8 0+85 Conc. Collar End 8" Clay Pipe

0+81.3

2000-02251-310.5 Erie-1011600-Kansas Ditching-4" SCH40-170W CO, 1V45, 1 Fernco to cast Iron @ house

1 Fernco to clay- Repair only- no usmt

C 50188-2916 E. Kellogg - Seal off 7-7-75 - at Henning (sealed with 457 of Chautauque)

R C 64570-414 S. Erie - 12-20-77 - H. Scott (470.7)