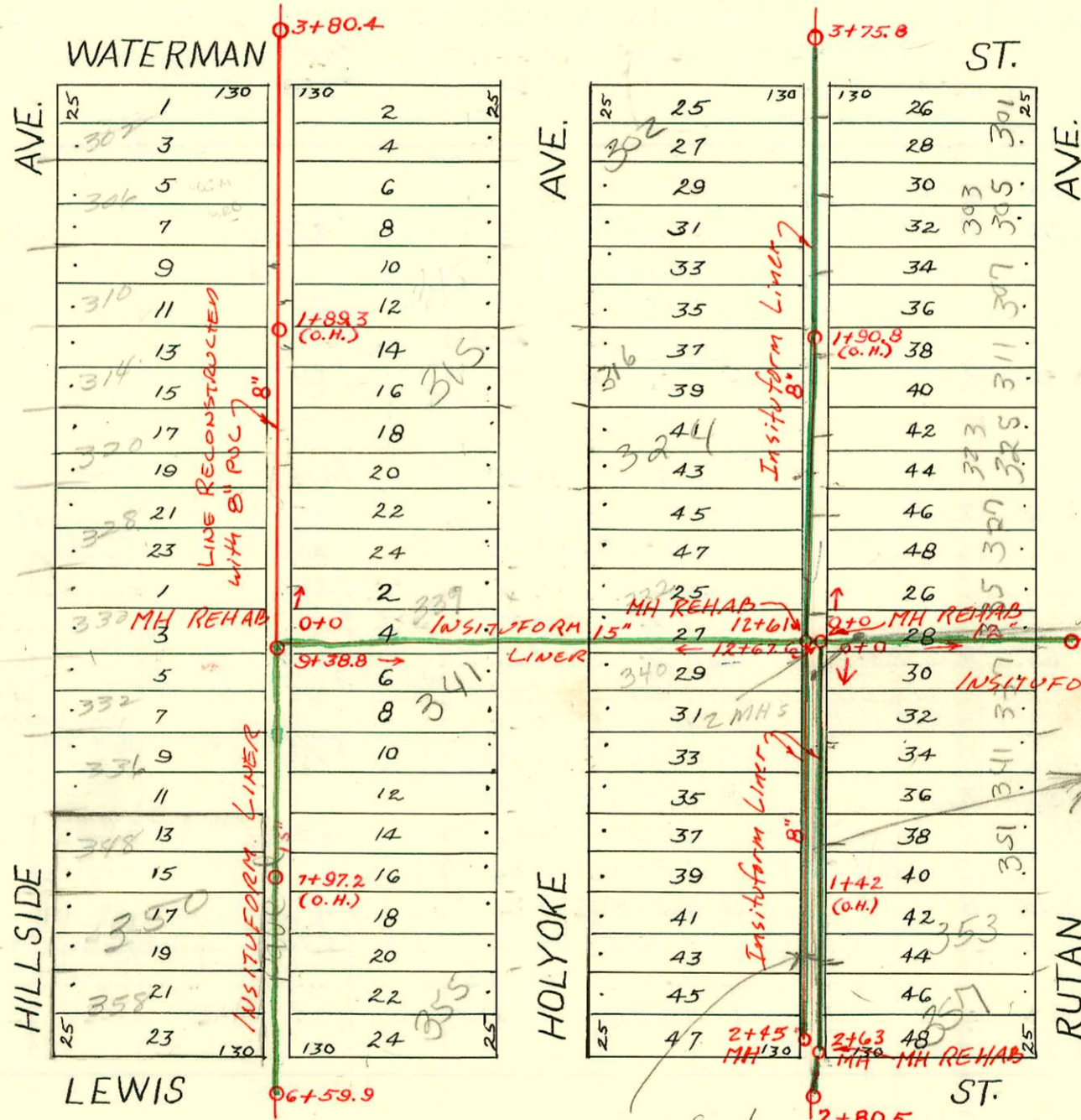


DIST. A - S.S. No. 12  
1912

1990 SANITARY SEWER RECONST.  
PROGRAM PHS II - G 3  
468-82080 (630426)  
Built By Utility CONTR.  
Booked 6-17-91

1990 SANITARY SEWER RECONST.  
PROGRAM PHS II, G 1, 2, 4  
468-82080 (630426)  
Built by INSITUFORM PLAINS  
Booked 6-17-91



1991 SAN. SEW. RECONSTRUCTION  
PROGRAM PHASE III  
Built By INSITUFORM PLAINS

2nd 8" SS found  
by flow crew  
10-10-79. no MH on  
south end of line

STORM SEWER  
C-81  
NOT  
54" STORM SEWER  
Runs over 8" clay  
line on east side  
of alley according  
to John McClung's  
Sanitary Lateral  
at 12' instead  
of 8' - not sure  
Refer to  
Storm Book  
B-164  
12-9-97  
K

CONSTRUCTION RECORD

SERVICE RECORD

STATION	ELEVATION		Depth	MANHOLE	4-INCH "Y" BRANCHES		No. of Permit		House Number		DATE OF PERMITS	
	Ground	Grade			North West	South East	North West	South East	North West	South East	North West	South East
6+0	120.26	110.03	10.23	6+59.9	6+98	6+96	#1041	#456	350 S. Hillside	355 S. Holyoke	4-13-71	3-11-78
7+0	120.06	110.51	9.55		7+22.5	7+20.5	#150	#178	3210 E. Lewis		10-27-21	7-5-17
					+47	+45	#178	#478	352 S. Hillside		2-12-71	5-10-22
					+71	+69						
					+95	+93	#408					8-17-15
8+0	121.46	110.99	10.47		8+20	8+18	#470		348 S. Hillside		2-12-71	8-5-14
					+44.5	+42.5						
					+69	+67	#413	#3	343 S. Holyoke		9-10-12	1-4-16
					+96.5	+94.5						
9+0	121.06	111.40	9.66	9+38.8	9+21	9+19	#314	#20			6-29-12	1-25-16
10+0	121.94	112.70	9.24									
11+0	121.44	114.00	7.44									
12+0	124.04	115.30	8.74	12+67.6								
0+0	124.34	115.68	8.66	0+0								
1+0	125.24	117.01	8.23									
0+0	120.85	112.00	8.85	0+0	0+10	0+07.5	#1052	#833	330 S. Hillside		7-8-19	9-15-75
					+34.5	+32	#601		302 S. Hillside		11-21-75	11-13-17
					+59.5	+57					12-23-12	
					+84.5	+82	#136					3-12-14
1+0	120.65	112.43	8.22		+09.5	+07	#414				4-29-75	7-8-14
					+34.5	+32	#98		320 S. Hillside		3-18-18	
					+60	+57.5	4277		314 S. Hillside		10-3-81	
					+85	+82.5	#81					3-11-18
2+0	119.75	112.87	6.88		2+10.5	2+08	#351	#128	310 S. Hillside		7-16-15	3-27-18
					+35	+32.5	#334		322 S. Hillside		1-6-82	
					+60	+57.5	#242		306 S. Hillside		5-2-13	
					+85	+82.5	#290	#453	302 S. Hillside		5-20-18	5-6-22
3+0	119.25	113.30	5.95		3+10	3+07.5	#381	#634			6-28-18	7-22-21
					+35.5	+33						
					+80.4	+58						
0+0	124.50	115.35	9.15	0+0	0+19.5	0+17		#89	333 S. Rutan			2-25-31
					+37.5	+35	#242		329 S. Rutan		4-27-17	
					+55	+52.5						
					+80	+77.5	#362	#160	311 S. Rutan		6-20-18	1-4-43
1+0	124.10	116.25	7.85		1+03	1+05.5	#976		316 S. Rutan		6-4-19	9-27-28
					+31	+28.5	#26511	#1056	309 S. Rutan		11-13-90	
					+55.5	+53	1266	#295			10-6-19	
					+77.5	+75						3-30-25
					+99							
2+0	123.90	117.15	6.75		2+01.5		#12	#387			1-4-22	7-1-18
					+27.5	+25	#271				5-11-18	
					2+52.5	+50			303 S. Rutan			12-10-28
					+77.5	+75	#1291				10-1-92	
3+0	124.50	118.05	6.45		3+04.5	3+02	#742		302 Holyoke		10-10-17	
					+27.5	+25	#820					11-8-17
0+0	124.50	115.65	8.85	0+0	0+13.5	0+11	#605		340 S. Holyoke	500 Belmont		6-3-25
					+38.5	+36						
					+63.5	+61	#1099	#700	342 S. Holyoke	344(?)	8-28-22	6-21-22
					+86.5	+84						
1+0	123.60	116.13	7.47		1+11.5	1+09	#862		346 S. Holyoke		9-20-21	
					+37.5	+35	#21		351 S. Rutan			11-4-04
					+63	+60.5	#25		328 S. Holyoke		1-10-22	1-18-13
					+88	+85.5			500 Belmont			
2+0	124.40	116.58	7.82		2+13.5	2+11	#90	#638	316 S. Holyoke	397 S. Rutan	2-10-22	7-23-21
					+38.5	+36						

Sub 2014-02943 Holyoke 351 S. Rutan (McCallough) - Reconnect

C52520 332 S. Hillside - Henry, 11-21-75  
 P 52519 336 S. Hillside - Henry, 11-21-75  
 C22919 358 S. Hillside - Jay Lester - 4/21/71 (6+98)

#1249 - Tap - 9-26-22  
 2002-00393 #294-18P - 337 S. Rutan - 4-14-26  
 #905-7AP - 324 S. Holyoke - 11-9-46  
 #27176 32152-7P - 353 S. Rutan - Jerry Forshie - 1-16-64 (+95.5) (2+10.0 tap 4" sch 40 PVC)  
 #93-5100-7 315 S. Hillside - Tap 21354 - serves new addition 4" ABS 40. Tied back into 4" ABS 40 line that serves existing building (W. end of bldg) 4" 1" charlow - (City Main Repair in 1920 changed to PVC)