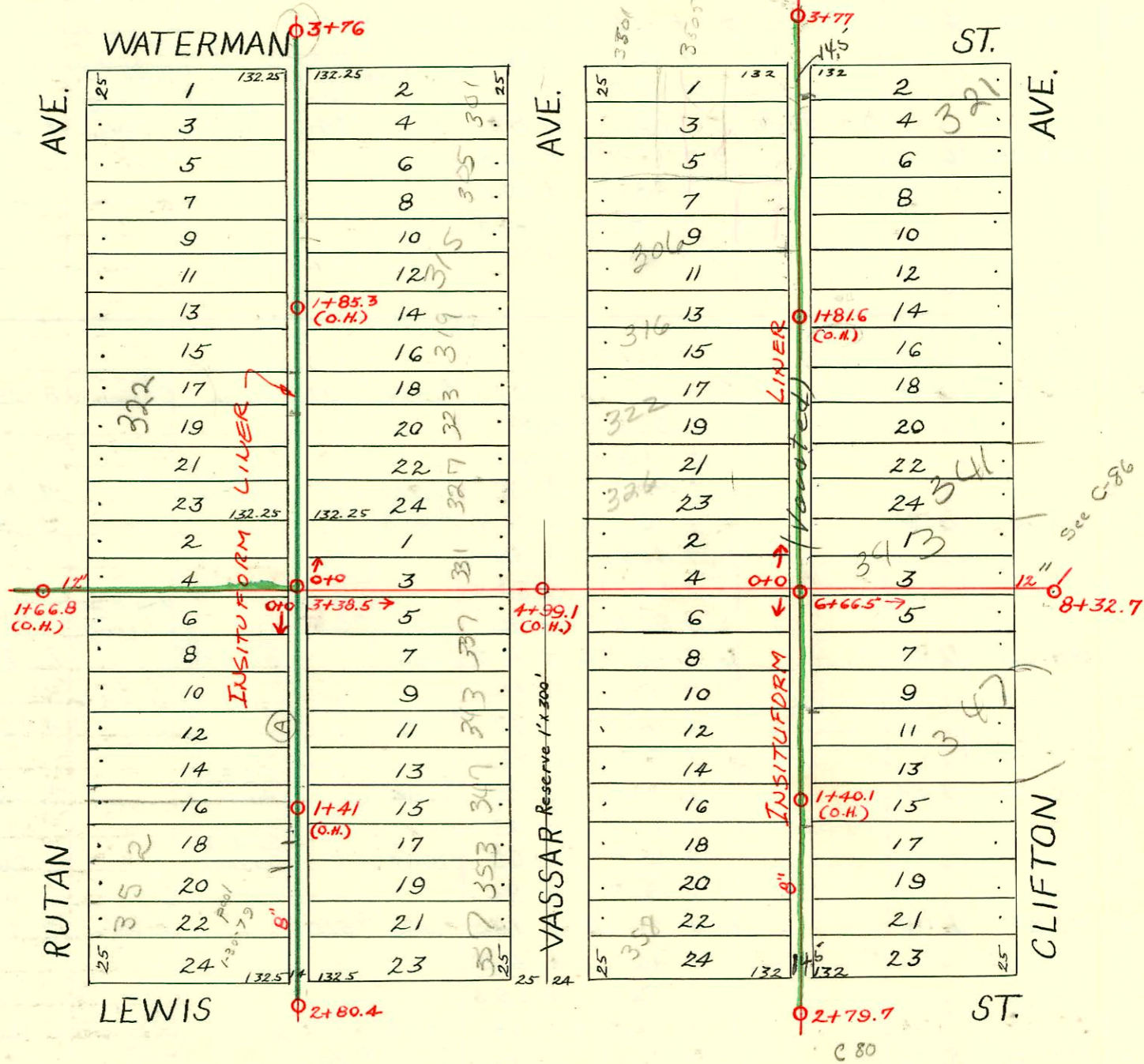


DIST. A - S.S. No. 12
1912

1990 SANITARY SEWER RECONST.
PROGRAM Phs II G 1, 2 & 4
468-82080 (630434)
BUILT BY INSITUFORM PLAINS
Booked 6-17-91

Plan 7 - 1054



1990 SAN. SEWER RECONSTRUCTION, Phs III
PROJ. NO. 468-82080 (630442)
BUILT BY INSITUFORM PLAINS, INC.

2003-0518 - 3124123 - 341 Clifton - A Good Plbr - 4" PVC 1045, 1045, 1022, 2 DIRCO, 20' of 4" pipe about 4' from main - City Repair 4x8 Tee 60' N of MH020 (076)

CONSTRUCTION RECORD

SERVICE RECORD

STATION	ELEVATION		Depth	MANHOLE	4-INCH "Y" BRANCHES		No. of Permit		House Number		DATE OF PERMITS	
	Ground	Grade			North West	South East	North West	South East	North West	South East	North West	South East
1+0	125.24	117.01	8.23									
2+0	128.64	118.91	9.73									
3+0	127.14	120.81	6.33	3 + 38.5								
4+0	129.64	122.88	6.76									
5+0	130.97	124.48	6.46									
6+0	128.85	126.08	2.77	6 + 66.5								
7+0	129.55	127.68	1.87									
8+0	131.75	129.28	2.87	8 + 32.7								
(A) 0+0	128.78	122.30	6.48	0+0	0 + 11.5 +37 +62.5 +87.5	0 + 09 +34.5 +60 +85	#968 #2193 #1495		337 S. Vassar 352 S. Rutan 322 S. Rutan		11-7-27 9-26-24 10-19-29	
1+0	127.38	124.30	3.08		1 + 17 +38.5 +64.5 +89.5	1 + 10.5 +36 +62 +87	#1681 #1666 #2133 #1029 #174		343 S. Vassar 347 S. Vassar 352 S. Rutan 326 S. Rutan		12-10-48 2-25-48 8-9-29 3-7-25	
2+0	133.48	126.30	7.18		2 + 15 +40.5	2 + 12.5 +38	#281		353 S. Vassar 357 S. Vassar		4-17-48 5-15-31	
					2 + 80.4							
0+0	128.84	122.30	6.54	0+0	0 + 14 +39.5 +65.5 +90.5	0 + 11.5 +37 +63 +88	#1182		331 S. Vassar		5-31-50	
1+0	130.84	124.74	6.10		1 + 16.5 +40 +63 +90.5	1 + 14 +37.5 +60.5 +88	#215 #618	#879	325 S. Vassar 319 S. Vassar		10-17-27 4-26-18 4-27-23	
2+0	132.54	127.21	5.33		2 + 16.5 +42.5 +68 +94	2 + 14 +40 +65.5 +91.5	#611 #514 #631	#1123 #1081 #374	315 S. Vassar 305 S. Vassar		12-30-26 4-25-23 9-6-13 5-6-26	
3+0	135.44	129.65	5.79		3 + 16.5 +40	3 + 14 +37.5	#98	#1014			7-11-23 2-20-14	
					3 + 76							
0+0	131.69	127.27	4.42	0+0	0 + 27 +52 +77.5	0 + 24.5 +49.5 +75	#184 #905		344 S. Vassar 348 S. Vassar 346 S. Vassar		5-11-16 8-25-28	8-15-11
1+0	130.29	130.27	0.02		1 + 03.5 +28 +45 +53 +78.5	1 + 01 +25.5 +50.5 +76	#905 #402 #354 #749	#709	335 S. Clifton 352 S. Vassar 346 S. Vassar		10-24-27 7-17-46 7-25-12 9-6-27	
2+0	140.59	133.27	7.32		2 + 04 +29	2 + 01.5 +26.5	#82	#710	241 S. Clifton		2-28-29 8-15-11	
					2 + 79.7							
0+0	131.65	127.27	4.38	0+0	0 + 16.5 +43.5 +67.5 +93	0 + 14 +41 +65 +90.5	#1062 #451 #583 #452		309 S. Clifton 330 S. Vassar 326 S. Vassar		9-26-25 10-26-36 12-9-12 10-26-36	3-24-03 6-22-22
1+0	138.95	129.77	9.18		1 + 18 +44 +66.5 +94	1 + 15.5 +41.5 +64 +91.5	#72 #853	#72 #853	339 S. Clifton		2-2-26 6-5-23	
2+0	144.05	132.27	11.78		2 + 27.5 +52.5 +77.5	2 + 25 +50 +75	#64 #1275 #1274	#403	306 S. Clifton 351 S. Clifton 350 S. Clifton		2-3-27 8-27-23 8-27-23	5-13-21
3+0	148.24	134.77	13.47		3 + 02.5 +26.5	3 + 00 +26	#157	#157	331 S. Clifton		3-13-29	
					3 + 77							

#418 - Tap - 5-18-21
 #1190 - 343 S. Clifton
 #925 - Tap - 351/6 E. Lewis - 8-29-28
 #436 - Tap - 328 S. Rutan - 4-26-29 - J. M. Connaughton
 #199 - Tap - 340 S. Rutan - 3-17-30 - George Sargent
 #530 - Tap - 332 S. Vassar - 5-23-30 - George Sargent
 #1623 - Tap - 346 E. English - 6-12-52 - Rex Robertson, Inc.