

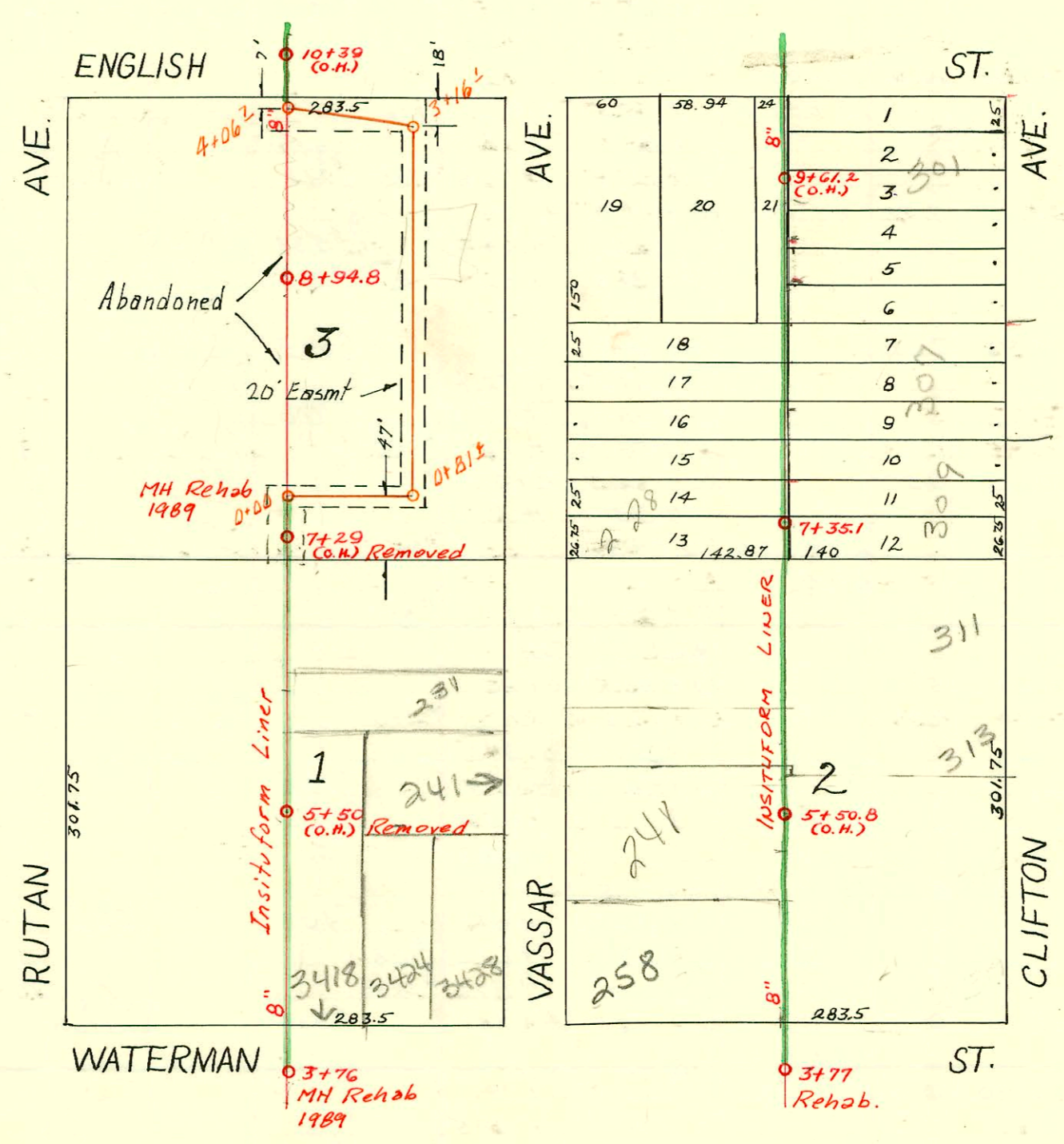
DIST. A - S.S. No. 12
1912

of part of Dist A - S.S. #12

Relocation A Sanitary Sewer
At English & Rutan St.

Built by: G. A. Pearson Inc.
Booked 6-12-73 from IH 70
Proj No. BHK8503025

1990 SAN. SEWER RECONSTRUCTION, PHASE III
Proj. No. 468-82080 (630442)
Built By INSITUFORM PLAINS INC.



1988 Sanitary Sewer
Reconstruction (Phase I)
468-81886 (600817)
Built By Stannard Const.
Booked 7-2-90 from Plan & Insp. Cards

2005-02997-12-5-05-256 S Rutan - 4" (1) 40 PVC, (1) wye, (2) 45H, (1) twin cl, tied to building drain - cook's

CONSTRUCTION RECORD						SERVICE RECORD						
STATION	ELEVATION		Depth	MANHOLE	4-INCH "Y" BRANCHES		No. of Permit		House Number		DATE OF PERMITS	
	Ground	Grade			North West	South East	North West	South East	North West	South East	North West	South East
3+0	135.44	129.65	5.79	3+76								
4+0	139.94	131.50	8.44		4+17.5	4+15	#646		3408 E. Waterman			4-1-24
					+42.5	+40	#2510				11-18-49	
					+67.5	+65						
					+91.5	+89						
5+0	144.22	132.20	12.02		5+09							
					+21.5	5+19						
					+57.5	+45	#48					1-10-23
					+73.5	+71	#1893					12-22-23
					+98	+95.5	#1468		240 S. Rutan		8-31-49	
6+0	144.42	132.90	11.52		6+24	6+21.5	#25107		831 E. Vassar			4-15-88
					+47	+44.5	#1692					11-15-23
					+70	+67.5						
					+82		#960		229 S. Vassar			8-31-25
7+0	141.82	133.60	8.22		7+17	7+14.5						
					+42.5	+40						
					+67.5	+65						
					+93	+90.5						
8+0	138.82	134.31	4.51		8+18.5	8+16	#42357		3425 E. English			7-2-24
					+43.5	+41	#1530		3411 E. English			6-12-68
					+68.5	+66	#9103		204 S. Rutan			
					+89.5	+87	#611		212 S. English		4-25-23	1-22-13
9+0	141.92	135.00	6.92		9+17	9+14.5						
					+43	+40.5						
					+68	+65.5						
					+93.5	+91						
10+0	144.51	135.70	8.8									
Relocation San Sew. at English & Rutan												
0+00	139.9	133.82	6.1	0+00 New M.H.								
	142.7	134.16	8.5	0+81 1/2 "								
1+00												
2+00												
3+00												
	147.3	134.97	12.3	3+16 1/2								
4+00												
	144.9	135.23	9.7	4+06 1/2								
C 42356 - James Hooley - 3425 English (M.H. top 8+94.8) - 11-24-73												
C 9103 - 204 S. Rutan - Seal off - all remaining 6-12-68 (8+66)												

#946 - Top - 256 S. Rutan - 7-20-49 - A.I. Kime (see next pg)
 #5645 - Top - 3418 E. Waterman - 6-16-23
 #5645 - Top - 3507 E. English - 7-18-55 - Coleman Pibg.

Top C 42359 - 3425 E. English - J. Hooley - 11-21-73 (8+53.2)
 Top C 42358 " " " " " (8+06.8)
 Top C 42356 " " " " " (M.H. top in 8+94.8)