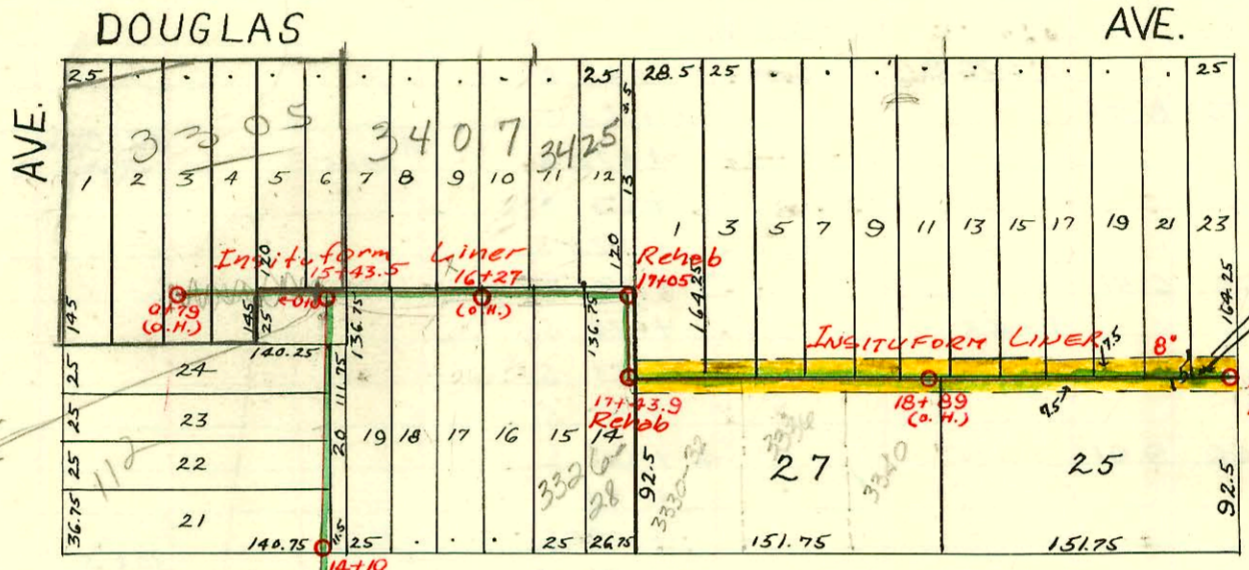


DIST. A - S.S. No. 12
1912

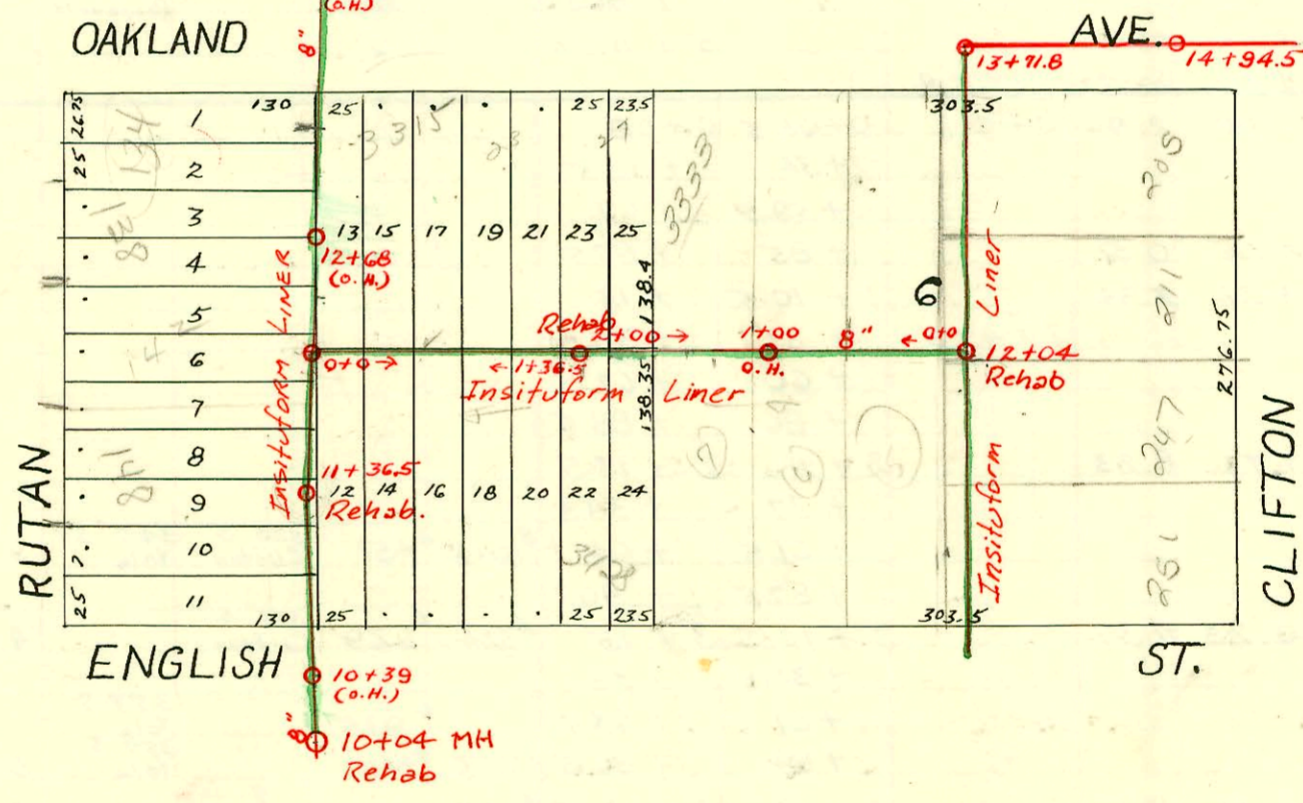
10-54

Loc. P: 88
3705 E. Doug
for location



EASEMENT # 2335
 The east and west alley lying between Douglas Ave. and Oakland Ave. (the latter formerly known as South Park Ave) and extending West from Clifton Ave. to the West line of Lenore Addition, a sub-division of a part of College Park in College Hill Addition to the City of Wichita, Sedgwick County, Kansas.

Line plugged
 W. of Mt
 15+43.5
 per final
 11-28-73



1990 SAN. SEW RECONSTRUCTION, PHASE III
 Proj. No. 468-82080 (630442)
 Built By INSITUFORM PLAINS INC.

CONSTRUCTION RECORD							SERVICE RECORD					
STATION	ELEVATION		Depth	MANHOLE	4-INCH "Y" BRANCHES		No. of Permit		House Number		DATE OF PERMITS	
	Ground	Grade			North West	South East	North West	South East	North West	South East	North West	South East
10+0	144.51	135.70	8.81		10+87.5	10+85	#1333					10-29-19
11+0	147.36	136.40	10.96		11+11.5	11+09	#72		3314 E. English			1-26-28
				11+36.5	+44	+41.5						
					+64.5	+62						
					+87	+84.5	#765				8-23-21	
12+0	148.56	137.10	11.46		12+12.5	12+10	#10032		3315 E. Oakland		1-19-54	7-13-21
					+41.5	+39	#603					
					+66.5	+64	#84				2-7-20	
					+94.5	+92						
13+0	150.06	137.80	12.26		13+24.5	+22	#586				6-27-11	
14+0	147.56	138.50	9.06		14+23		#587					
					14+74	+71.5	#2400	#77	112 So. Rutar		3-20-60	2-16-11
15+0	148.26	139.20	9.06	15+43.5	15+56.5	+54	C38846		3407 E. Douglas		5-8-73	
					+82.5	+80						
16+0	150.59	141.32	9.27		16+10	16+07.5	#1416	#1451	3425 E. Douglas	3322 Oakland	5-15-19	5-25-70
					+35.5	+33	#913	#1563	3425 E. Douglas	3326 Oakland	3-16-73	11-18-22
					16+63.5	14+61	#342				6-12-71	
					+89	+86.5	C37732					
17+0	153.59	143.58	10.01	17+05								
				17+43.5	+53.5	+53	#176				3-20-11	
					+81	+78.5						
					+88.9	17+96.9	#185	#213	3330-32 Oakland		4-29-12	3-28-11
18+0	153.48	145.76	7.72		18+31.5	18+29	C6029	#533	3555 E. Douglas		5-1-68	6-8-11
					+57	+54.5	#7425	#216	3547 E. Douglas	355 E3-21-68	3-21-11	3-28-11
					+84.5	+82	#181					
						+97						
19+0	155.88	147.96	7.92		19+04.5		#217	#848	3551 E. Douglas	together	8-27-71	11-19-17
					+34.5	+32	2117		3554 E. Douglas		3-28-11	3-28-11
					+59.5	+57	#778				8-27-56	
					+79	+76.5	#320				7-29-68	10-24-17
20+0	159.73	150.16	9.57		20+09.5	20+07	#251		3571 E. Douglas		5-31-18	
					+33	+30.5					5-29-12	
				20+53.9	20+43		#95		3403 E. Douglas		3-3-11	
0+0				0+0								
					0+79	0+77	#55				2-11-11	
					West	East						
10+0	149.88	144.35	5.53		10+88.5	10+86			3510 E. English		4-23-28	
11+0	154.68	145.60	9.08		11+13.5	11+11	#420					
					+39.5	+37						
					+64	+61.5	#173					4-12-18
					+89	+86.5						
						+89.8	#32					2-15-18
12+0	157.08	146.85	10.23	12+04	12+14.5	12+12			209 S. Clifton		5-19-27	
					+39.5	+37	#407					
					+65	+62.5	#103				3-6-11	
					+90	+87.5	#1570				10-24-23	
13+0	157.48	148.10	9.38		13+15.5	13+13			105 S. Clifton		10-30-30	
				13+71.8								
0+0	157.57	146.90	10.67	0+0	North	South						
					0+42	0+39.5						
					+67	+64.5	#759				10-17-17	
					+92.5	+90	#632		3508 E. English		6-13-28	
1+0	155.77	147.14	8.63		1+18	1+15.5	#185		3333 Oakland	3502 E. English	2-16-81	12-1-49
					1+43.5	+41	#439	#2645			9-25-12	
					+68.5	+66						
					+94	+91.5	#1069		3227 Oakland		11-4-47	
2+0	152.37	147.38	4.99	2+00								
0+0	148.55	140.38	8.17	0+0	0+07.5	0+09.5						
					+23.9	+26.5						
0+36.5	149.21	142.33	6.88		+54.5	+57						
					+74	+76.5	#934		3420 E. English		8-3-28	
0+86.5	150.70	144.83	5.87		1+00	1+02.5						
					+22.2	+27.4						
1+36.5	147.33			1+36.5								

#858 - Tap - 3428 E. English - 10-6-26
 #4707 - Tap - 3557 E. Douglas - 4-1-53 - Kendall Plbg. Co
 #7569 Tap - 3403 E. Douglas - 7-23-58 - Prayano Plbg.
 #3657 Seal off 3557 E. Douglas on SW Cor of Clifton at Douglas Al Henning - 7/10/67
 #93-23363-7 3305 E Douglas #2/1/93 - R - 4" Sch 40 PVC - 6" MH Stub - 4" into M.H. gasket both end of 6" and grouted