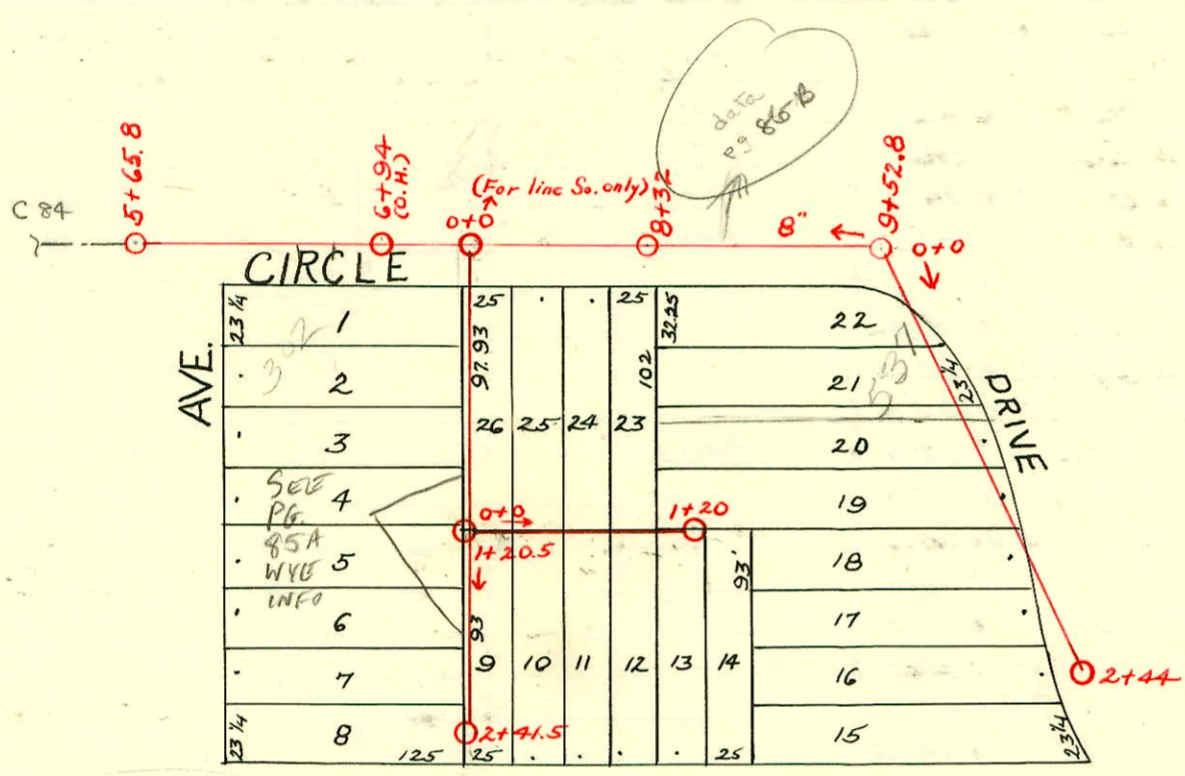


1=100

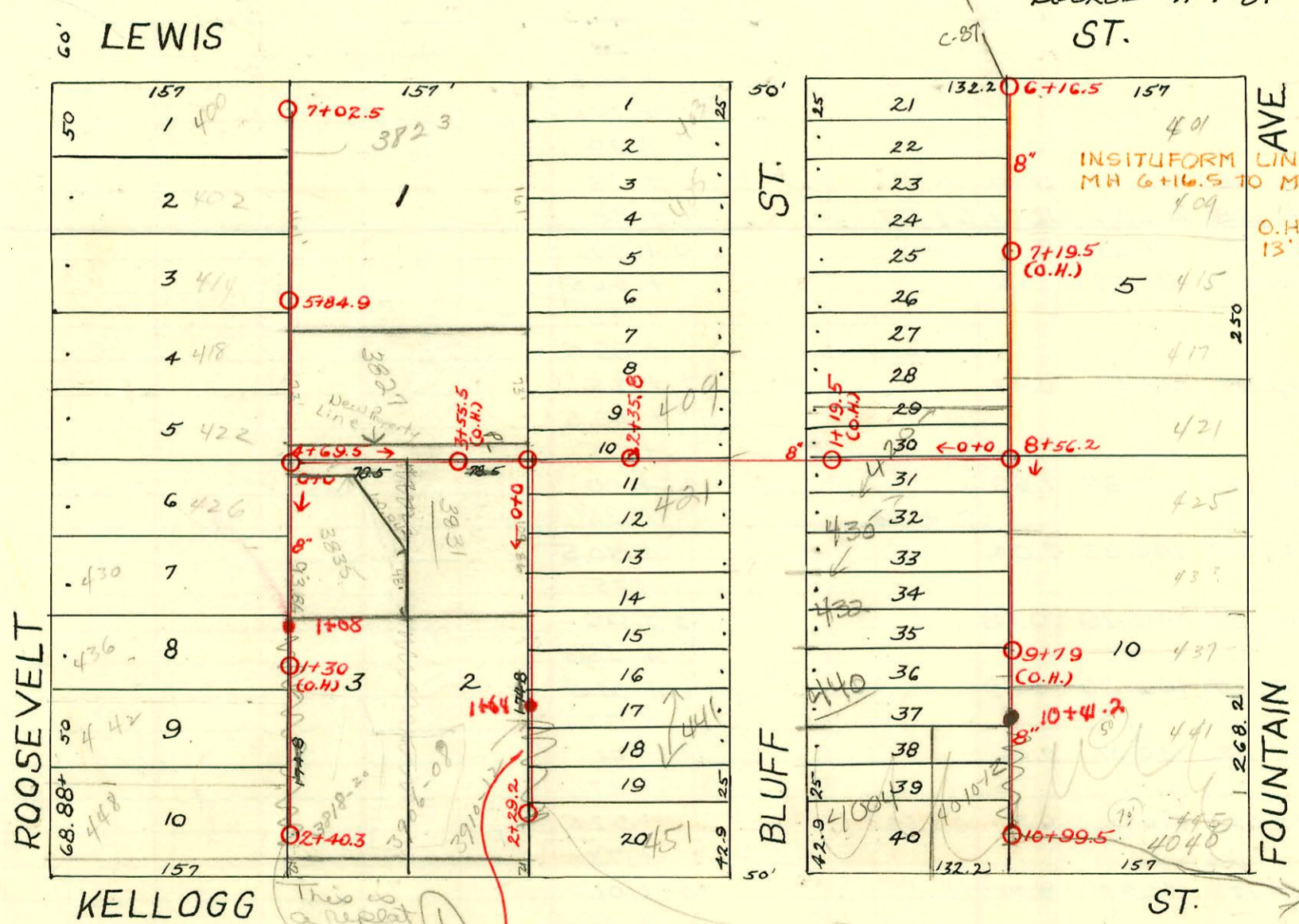
2001-00672-3/28/01 - 425 S. Fountain - Roto - Pipe Burst - 5 DR17 (Black Pipe) Predco 11.8' 50' MH 8+56.2 (8+68) 1H22, 1V45 (fittings are pvc) CITY WYE REPAIR

DIST. A - S.S. No. 12
1912



302 S. Roosevelt Lt
69' W of MH 0700
ON FLOWLINE
FOR TRANSITION TO TV C/S

ALTER, REPAIR OR RECONSTRUCT A PORTION OF DIST. A S.S. #12 BETW. BLUFF & FOUNTAIN, S. OF LEWIS 468-76-245-81298-000-000-001 BOOKED 11-T-B FROM CARDS



INSITUFORM LINER INSTALLED FROM MH 6+16.5 TO MH 8+56.2
O.H. REMOVED AT STA 7+19.5 13"2" OF 8" VCP REPLACED

Lat. 27, Dist. A, S.S. #22
A.A. Dobson - 1927
See PG 85 4

abandoned for Kellogg Expansion BSK 3-28-01

- Re-connected 7-20-81
- #11536 4005 E. Lewis (Lathrop)
 - 11537 406 S. Bluff
 - 11538 412 " "
 - 11539 420 " "
 - 11540 401 S. Fountain
 - 11541 409 " "
 - 11542 415 " "
 - 11543 417 " "
 - 11544 421 " "

SWR2004-00265 Repair
4405 Bluff 1/30/04 -
Wichita Exc - City Wye
repair 4" Predco 37.6' N of
MH 10+41.2 (10+03.6) 2H45,
1V45, 1V22

CONSTRUCTION RECORD

SERVICE RECORD

STATION	ELEVATION		Depth	MANHOLE	4-INCH "Y" BRANCHES		No. of Permit		House Number		DATE OF PERMITS	
	Ground	Grade			North West	South East	North West	South East	North West	South East	North West	South East
9+0	169.63	160.51	9.12		9+05	9+02.5						
					+28	+25.5						
	168.13	161.44	6.69	9+52.8		+46						
Lines Bet Circle Drive & Lewis, East of Roosevelt. S. from M.H. in Circle Drive	0+0	167.91	158.80	9.11	0+0 In Circle Dr. 125' E. of Roosevelt	0+92	0+46	#805		3812 Circle Drive		9-21-26
	0+50	170.66	160.30	10.36				Connected when sewer was laid				
	1+0	171.40	161.80	9.60	1+20.5	1+27		" "				
	1+20.5	171.83	162.40	9.43		+49						
	2+0	173.72	164.80	8.92								
	2+41.5	174.72	166.03	8.69	2+41.5							
E. from M.H. Bet Lewis & Orme At Sta. 1+20.5	0+0	171.83	164.40	7.43	0+0 (Same as 1+20.5)		0+24	#581				4-19-23
	+50	172.77	164.60	8.17			+71.5					
	1+0	173.00	164.80	8.20			+93.4	#1782				12-4-23
	1+20	172.87	164.88	7.99	1+20		1+12					
Line from M.H. where Circle Drive turns So.	0+0	167.75	162.25	5.50	0+0	0+30.5	0+28					
						+56.5	+57					
	0+50	168.69	162.45	6.24		+81	+78.5	#1	343 Circle Drive			1-3-28
	1+0	169.24	162.65	6.59		1+07	1+04.5					
		169.80				+32.5	+30					
	1+50	169.80	162.85	6.95		+57.9	+55.4					
						+83.3	+80.8					
	2+0	170.49	163.05	7.44		2+08	2+05.5	#558				4-17-23
	+44	170.75	163.25	7.50	2+44	+33.1	+30.6					
Line at rear of lots 11 thru 20 W. of Bluff, Just No. of Kellogg.	0+0	176.71	165.86	10.85	0+0	0+88.0	0+13.7	28393 #762	3881 F. Lewis	421 S Bluff	1-12-29	9-9-27
							+38.4	#47		435 S Bluff		3-19-35
							+79.6					
							+99					
	1+0	176.01	165.96	10.05			1+24	#665		447 S Bluff		8-8-27
							+50.5					
						1+66.8	+64.3	14804 #655	3910 E. Kellogg	449 S Bluff	10-4-85	8-4-27
							+90	14803 11654			10-4-85	
	2+0	176.11	165.06	10.05								
	2+29.2	176.0	166.09	9.91	2+29.2	2+19.3	2+16.8	#130	3910-12 E. Kellogg	457 S Bluff	8-13-32	8-4-27
								3910-12 E. Kellogg			8-13-32	8-4-27
								3910-12 E. Kellogg			8-13-32	8-4-27

2003-02089-8/8/03-318 S Circle Dr - Wichita Exc - 4" PVC City Tap - 4" Predco 131' SW of MH 3185 (2+54) MH # 5747-171 - 2" TWIN CO, 1H22, 1H45, 1H45, 9' deep.

96-203887 12-4-96 3910 E Kellogg

#1131-7-31-23-403 S Bluff - Y at M.H. at intersection Lewis & Bluff
 Tap 421 S Bluff - Johnson & Ripstra - 10-22-27 #762
 Tap 4004 E Kellogg #1060 - 9-28-28 - 10' pipe when no permit
 #910 Special Fee 4005 to 4013 E Kellogg - Tap paid 10-25-26
 Tap #957 3918 E Kellogg - 10-15-30 - E.L. Stewart
 Tap #110-3924-26 E Kellogg - 3-9-31 E.L. Stewart

326 S. Circle Dr - TOP at 174' N of MH 5765.8
 (MH 5747-331)
 327 S. Roosevelt - TOP at 86' N of MH 5765.8
 (MH 5747-331)

CONSTRUCTION RECORD

SERVICE RECORD

North & South
lie West of
Fountain - 157'

STATION	ELEVATION		Depth	MANHOLE	4-INCH "Y" BRANCHES		No. of Permit		House Number		DATE OF PERMITS			
	Ground	Grade			North West	South East	North West	South East	North West	South East	North West	South East	North West	South East
6+0	171.30	160.92	10.38	6+16.5	6+25	#782		405 S. Fountain		9-16-26				
					6+49.5	+52	#679	3405 E. Lewis		4-4-24				
					+74.8	+77.5	#736	409 S. Fountain		8-26-26				
7+0	173.10	161.72	11.38	7+00.5	7+03	#567		415 S. Fountain		6-30-26				
					+25	+27.5								
					+51.5	+54	#634	428 S. Bluff	417 S. Fountain	7-27-26				
					+79	+81.5	#778							
8+0	174.20	162.72	11.48	8+04	8+06.5	#1101		420 S. Bluff		12-24-26				
					+30	+32.5	#286	421 S. Fountain		4-13-26				
	174.30	163.31	10.99	8+56.2	8+65.5	+68	#632	425 S. Fountain	see next pg	7-27-26				
					+93.5	+96	#604	434 S. Bluff		6-3-25	4-21-25			
9+0	174.40	163.72	10.68	9+19	9+21.5		#409	433 S. Fountain		8-30-77				
					+44	+46.5								
					+70	+72.5	#5698	432 S. Bluff	R See below	7-13-83	7-20-01			
					+95	+97.5	#452	408 S. Bluff		7-2-53				
10+0	174.00	164.72	9.28	10+20	10+22.5		#1092	437 S. Fountain		6-1-26	8-26-25			
					+45.5	+48		437 S. Fountain		10-3-25	10-3-25			
					+73.5	+76	#1247	440 S. Fountain		9-16-69	9-16-69			
	173.50	165.72	7.78	10+99.5	+91	+93.5		445 S. Fountain		10-5-89	11-17-25			
0+0	174.30	163.31	10.99	0+0	0+09.5	0+12								
					+34.5	+37								
					+60	+62.5								
					+84.5	+87								
1+0	174.30	163.63	10.67	1+10	1+12.5									
					+35.5	+38								
					+61.5	+64								
					+86	+88.5								
2+0	174.60	163.95	10.65	2+12	2+14.5									
				2+35.8	+43	+45.5	#2639	405 S. Bluff		12-2-24				
					+60.5	+63								
					+85.5	+88								
3+0	175.30	164.27	11.03	3+10.5	3+13									
					+38.5	+41								
					+64	+66.5								
					+89	+91.5								
4+0	176.10	164.59	11.51	4+14	4+16.5									
					+39.5	+42	#622	436 S. Roosevelt		7-22-26				
	176.30	164.81	11.49	4+69.5	+78.5		#621	422 S. Roosevelt		7-22-26				
5+0	176.22	165.23	10.99	5+04.5	+30	5+30.9	#931	418 S. Roosevelt	3823 E Lewis	8-24-25	5-12-66			
					+55.5									
				5+84.9	+80		#765	414 S. Roosevelt		9-8-26				
6+0	175.82	166.63	9.19	6+06	+31.5		#856	406 S. Roosevelt		10-6-26				
					+56.5									
					+77		#252	402 S. Roosevelt		4-11-27				
					+93									
7+0	175.12	168.03	7.09	7+02.5										
0+0	176.32	164.81	11.51	0+0	0+09.5		#112	426 S. Roosevelt		2-16-26				
					+35									
					+60	0+76.0		430 S. Roosevelt	3835 E Lewis		7-28-26			
					+85									
1+0	176.42	165.97	10.45	1+10	1+10		#1070	436 S. Roosevelt		12-10-96				
					+35.5									
					+61		#132	442 S. Roosevelt		2-25-26				
					+86									
2+0	176.72	167.13	9.59	2+10.5	2+10.5		#876	446 S. Roosevelt		12-10-96				
	176.72	167.99	8.73	2+40.3	+34					10-13-26				
Line in Circle Drive, Roosevelt East	5+0	165.63	155.40	10.23	5+65.8	5+78	5+75.5							
	6+0	165.53	156.03	9.56	6+03	6+00.5								
					+28.5	+26								
					+51.5	+49	#1251	302 S. Roosevelt		9-26-22				
					+79	+76.5								
7+0	166.13	157.51	9.62	7+02.5	7+00									
					+28.5	+26								
					+54	+51.5								
					+78.5	+76								
8+0	168.83	159.01	9.82	8+04	8+01.5									
				8+32	+26.5	+24	#906	3821 Circle Drive		10-23-26				
					+54	+51.5	#1545	303 Circle Dr		11-15-22				
					+81.5	+79								

Cont. on page 85-A.

58695 - 432 S. Bluff - Al Wanning 7-13-83 - 8+56.2 S
 97297 Myc 13242 (4040 Kelloq) 3398-85 - 10+22.5

2001-00360-2/2001-432 S Bluff - Roto - Install 1 TWINCO, 1VZZ, Fernco to CI at house, 1 TWIN CO, 1VZZ