

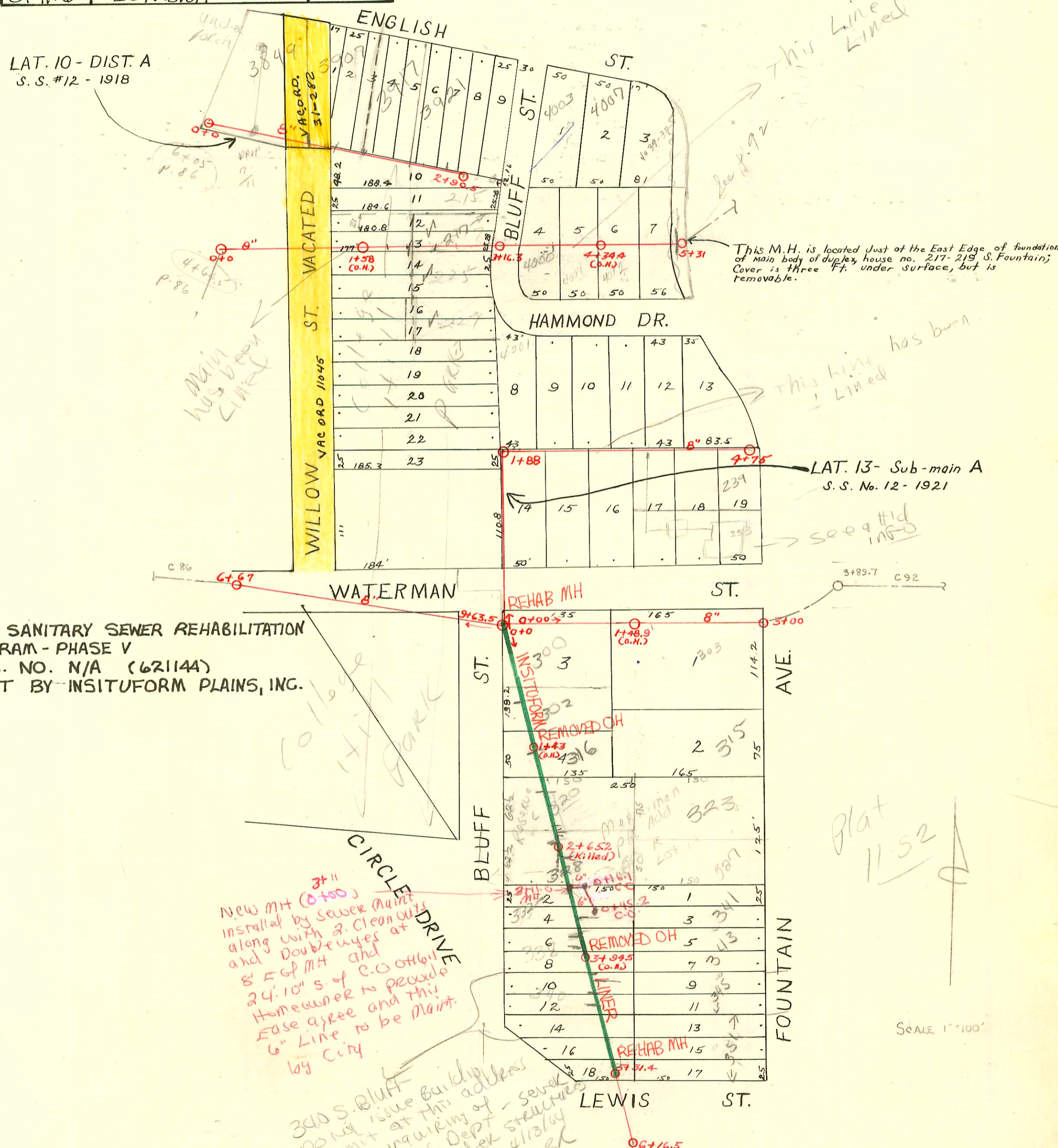
RECONNECTIONS

C-87B

STA.	ADDRESS	DIRECTION
5+24.1	351 Fountain/4022 Lewis	East
5+10	344 Bluff	West
4+51	340 Bluff	West
4+20.5	345 Fountain	East
4+13.3	343 Fountain	East
3+79.5	338 Bluff	West
3+68	332 Bluff	West
3+48.8	341 Fountain	East
2+77.6	327 Fountain	East
2+57.9	328 Bluff	West
2+47.8	323 Fountain	East
1+99.7	320 Bluff	West
1+48.8	316 Bluff	West
0+91.6	302 Bluff	West

96-6985-7 5896 327 S. Fountain - Repl 10' 4" PVC, 20' off Main at NE corner of house at 328 Bluff

511363 2003-01299-Olson SWF - 4" 40PVC, 120IN CO, 1H45



1995 SANITARY SEWER REHABILITATION PROGRAM - PHASE V
 PROJ. NO. N/A (621144)
 BUILT BY INSITUFORM PLAINS, INC.

LAT. 13- Sub-main A
 S.S. No. 12-1921

Blat 11.52

SCALE 1"=100'

#73-26713-7 - 4003 E. English - 10/13/03 - Replacement - All Homeing -
 4" PVC40 - Replaced line under proposed swimming pool location.
 (Run diagonally under pool from northeast to southwest corner.)
 Drainlayer replaced 44 ft of line, fall between ends of existing sewer only allow for 1/16 to 1/8" per foot fall.

340 S. Bluff
 DO NOT issue Building Permit at this address who inquiring of - sewer was Dept structures under 411363 BK

CONSTRUCTION RECORD

SERVICE RECORD

STATION	ELEVATION		Depth	MANHOLE	4-INCH "Y" BRANCHES		No. of Permit		House Number		DATE OF PERMITS	
	Ground	Grade			North West	South East	North West	South East	North West	South East	North West	South East
6+0	156.98	143.56	12.89	6+67		6+74						
7+0	156.98	144.22	12.25			7+00						
						+24.5						
+30	148.48	146.82	2.66			+50						
						+77.5						
8+00	152.02	146.22	5.80			8+00						
						8+27.5	+25					
						+52.5	+50					
						+77.5	+75					
9+0	157.62	148.22	9.40			9+02.5	9+00					
						+19.5	+17					
						+33.5	+31					
	161.02	149.48	11.57	9+63.5		+49						
0+0	147.10	144.71	2.39	0+0		0+92.5	0+90					
+25	152.70	145.46	7.24			1+18	1+15.5					
1+0	160.07	147.71	12.36			+43.5	1+41					
						+68.5	1+66					
						+93.5	1+91.9	#1158	227 S. Bluff		10-30-80	8-3-23
2+0	164.87	150.71	14.16			2+18.5	2+16					
						+44	2+41.5	#714	412 S. Bluff		8-10-26	
						+69.5	2+67	#793	225 S. Bluff		8-30-21	
						+95	2+92.5					
3+0	167.37	153.71	13.66	3+16.3		3+60	3+57.5					
+16.5	167.77	154.21	13.56			+81	3+78.5	#2258	4000 Hammond		10-4-24	
4+0	170.44	156.71	13.73			4+05.5	4+03					
						+40.5	4+38					
						+66	4+63.5					
						4+91	4+88.5	#105	4037 Bluff		12-6-24, 2-18-26	2-15-22
5+0	172.14	159.71	12.43	5+31		5+16	5+13.5					
0+0	161.02	151.00	10.02	0+0		0+14	0+11.5					
						+39	+36.5	#199	402 S. Bluff		3-15-26	
						+64.5	+62					
						+89.5	+87					
1+0	167.02	154.00	13.02			1+14.5	1+12					
						+39.5	+37					
						1+64.5	1+62	#759	315 S. Fountain		12-9-41	
						+90	+87.5					
2+0	170.40	157.00	13.40			2+15	2+12.5	#1214	303 Fountain		3-21-80	9-10-19
						+41	+38.5					
						+66.5	+64					
						+91.5	+89					
3+0	172.60	160.12	12.48	3+00								
0+0	160.50	151.00	9.50	0+0			+12.5					
							+35					
							+61					
							+88.5	#564	302 S. Bluff		6-30-26	
1+0	163.60	152.60	11.00			1+14						
						+39		#1061	316 S. Bluff		5/13/03	9-26-25
+50	160.30	153.40	6.90			+64.5						
						+89.5						
2+0	161.70	154.20	7.50			2+15.5		#482	320 S. Bluff		6-8-27	
						2+40.5		#2620	323 S. Fountain		11-28-24	
	166.10	155.20	10.90	2+65.2 (Killed)		+60.5		#995	307 Fountain		5-2-24	
						+90						
3+0	166.20	155.80	10.40			3+15						
						+40		#2273	338		10-8-24	
						+65		#579	326 S. Bluff		7-9-27	
						+90.5						
4+0	166.10	157.40	8.70			4+16		#2389	342 S. Fountain		10-22-24	
						4+42		#484	340 S. Bluff		6-8-27	
						+67						
						+89.5		#450	349 S. Fountain		12-10-25	
5+0	166.80	159.00	7.80			5+07.5		#107	344 S. Bluff		5-1-28	
	167.20	159.54	7.66	5+31.4		5+22.4		#4759	351 S. Bluff		2-7-24	
6+0	170.70	160.60	10.10									
	171.30	160.92	10.38	6+16.5								

Cont. on Page 87A

9145 344 S. Bluff 98.83 (McClung) 24.5131 (5707.8)
 #103 - Top - 217 S. Fountain - 1-20-23
 #1094 - Top - 4032 Hammond - 11-7-21
 #946 - Top - 242 S. Fountain - 11-2-27 - R.H. Anderson
 93-26713-7 1073-93 4003 English -
 95-4495-7 4-4-95, 4007 English - Padgett - 4504 40 AVE.
 97-10199-7 6-23-27 341 S. Fountain - City of Wichita

CONSTRUCTION RECORD							SERVICE RECORD					
STATION	ELEVATION		Depth	MANHOLE	4-INCH "Y" BRANCHES		No. of Permit		House Number		DATE OF PERMITS	
	Ground	Grade			North West	South East	North West	South East	North West	South East	North West	South East
0+0	153.03											
	155.83											
1+0	157.08				1+15.7							
	160.40				+39.6		#731		3717 E. English		2-14-19	
2+0	162.41				1+80.6	1+52	?		3907 E. English			
+50	164.38				2+01.5							
+87	165.84				+25	2+35		#937	215 S. Bluff		10-31-27	
3+32	165.38				2+52.3		#280		3923 E. English		4-15-20	
					2+90.5	2+80.5						
0+0	158.76	150.78	7.98	M.H. S.E. corner Bluff 0+0 & Waterman	0+72			#2706	4024 E. Waterman		12-15-24	
					+94	0+96.5						
1+00	156.46	151.98	4.48		1+18.5	1+21						
					+46							
					1+88							
2+0	160.72	153.92	6.80		2+01.5	2+04	#702		4901 R. Hammond		5-6-22	
					+28.2	+30.7						
					+53	+53.5		#277				
					+77.2	+79.7	#951	#1433	3912 E. Waterman		3-21-28	
3+0	163.17	156.12	7.05		3+02	3+04.5	#279				4-26-24	9-27-23
					+26	+28.5					2-26-23	
					+51.8	+54.3						
					+76.5	+79	#280		333 S. Jounlain		2-26-23	
4+0	167.14	158.32	8.82		4+02.5	4+05	#946		4013 E. Waterman		8-3-22	
					+27	+29.5		#1300				9-1-23
	167.92	160.52	7.40		+51	+53.5						

#26102-9-10-90-3907 E. English - WC - Donna Savina - (134' E. of M.H.)

1999-01124 - 11/5/99 Redd - 4" SCH 40 aprx 5.6' w of house + 65' S of the NPL 3H45

4000 E Hammond → TV Tape when main lined showed
TAP TO CROWN at 145' W. of MH 5731
FOR THIS LOCATION

2002-00956 - 4/4/02 - 4000 E Hammond - A Good Plbr - 4" PVC City Wye repair - 4" Predco -
145' W of MH 5731 (3+86) 2 dir CO, 2V45, 4" 40 PVC, BSMT

2003-02874 11/4/03 3435 E Oakland - McClung - I twin co, 1V22, Donut into WYS, 29.5' W of MH 3160.5
(3+31) shallow - 4"40 PVC

Line Rehab INFO from MH 8159

	300	s. Ch. Ften	- 12' S.
2-cum	{ 306	" "	- 56.9' S.
	{ 306	" "	- 79.2' S.
	308	" "	- 216.2' S.
	310	" "	- 280.6' S.
	312	" "	- 320.4 S.
	314	" "	- 338.3 S.

5 31.4
5 22.5
5 22.5