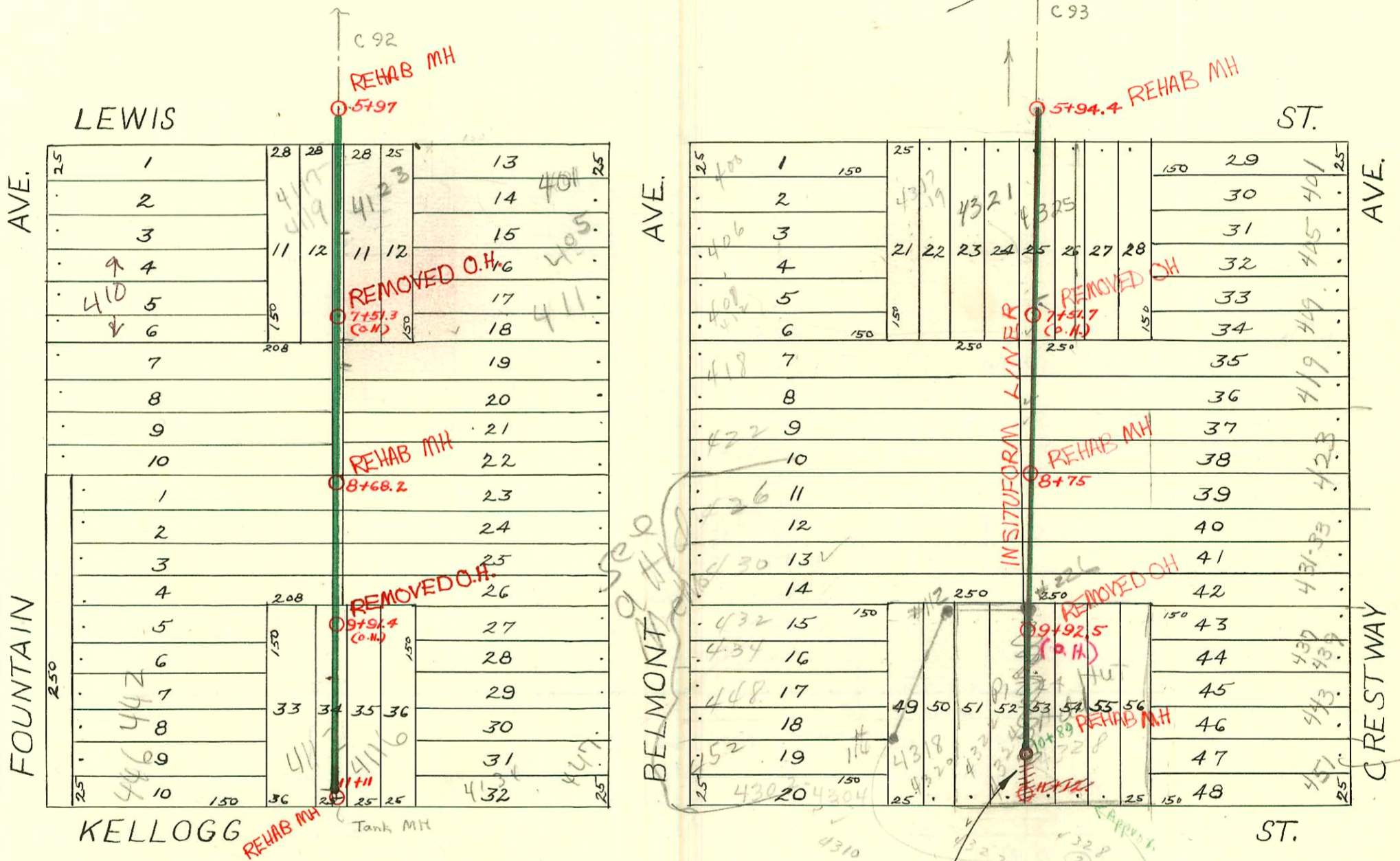


DIST. A - S.S. No. 12
1912

1992 SANITARY SEWER REHABILITATION PROGRAM - PHASE I
PROJ. NO. 468-82220 (631879)
BUILT BY INSTUFORM PLAINS, INC.
BOOKED 3-17-93 FROM AS BUILTS

1994 SANITARY SEWER REHABILITATION PROGRAM - PHASE I
PROJ. NO. 468-82399 (623124)
BUILT BY INSTUFORM PLAINS, INC.
BOOKED 2-17-95 FROM AS BUILTS



RECONNECTIONS

STATION	ADDRESS	DIRECTION
11+06	4116 E. Kellogg	West
10+79.3	447 Belmont E. Kellogg	East
10+59.3	4112 E. Kellogg	West
10+34.1	441 Belmont	East
10+29.9	446 Fountain	West
9+92.6	4116 1/2 E. Kellogg	East
9+91.9	439 Belmont	East
9+80.3	444 & 442 Fountain	West
9+43.4	433 Belmont	East
9+40.9	432 Fountain	West
8+96.3	427 Belmont	East
8+93.9	428 Fountain	West
8+37.3	422 Fountain	West
8+27.3	421 Belmont	East
8+01.5	414 Fountain	West
7+89.7	419 Belmont	East
7+74.7	410 Fountain	West
7+72.9	401, 405, 411 Belmont	East
7+17.2	4117, 4119 Lewis	West
6+90.2	4123 Lewis	East
6+88	404 Fountain	West
6+94.2	4321 E. Lewis	West

Sta. 10+59.2 wye W. 4304 E. Kellogg Duplex
Sta. 10+61.2 wye W. 4320 E. Kellogg
Sta. 10+89.0 Const. New M. H.
Sta. 10+89.0 to 11+12.0 abandoned S. S.
Sta. 11+12.0 Rem. exist. M. H.

MID-STATES CONST. CO. INC.
1968

RECONNECTIONS

STA.	ADDRESS	DIRECTION
10+63.8	4320 E. Kellogg	West
10+60.8	4304 E. Kellogg	West
10+40.5	4328 E. Kellogg	East
10+25.9	448, 432 & 4315 Belmont	West
9+90.7	439 & 437 S. Crestway	East
9+14.7	431-433 S. Crestway	East
9+11.9	430 S. Belmont	West
8+86.8	426 S. Belmont	West
8+27.2	422 S. Belmont	West
8+25.2	423 S. Crestway	East
8+16.1	418 S. Belmont	West
8+00.1	419 S. Crestway	East
7+71.3	400, 406 & 408 S. Belmont	West
7+71.3	4317 & 4319 E. Lewis	West
7+42.6	401, 405 & 409 S. Crestway	East
7+24.6	4327 & 4329 E. Lewis	East
6+96	4325 E. Lewis	East

Reconstructed during construction of 1222 dig. 1968 mid-states

Real at 110 E. Mail 62167
426 Belmont
430 Belmont
432-434 Belmont
448 Belmont
all on map - see who has maps at 48' N of MH #114

CONSTRUCTION RECORD						SERVICE RECORD						
STATION	ELEVATION		Depth	MANHOLE	4-INCH "Y" BRANCHES		No. of Permit		House Number		DATE OF PERMITS	
	Ground	Grade			North West	South East	North West	South East	North West	South East	North West	South East
5				5+94.4								
6	166.25	163.07	3.18		6+18 +41 +66 +91	6+20.5 +43.5 +68.5 +93.5						
7	167.75	163.23	4.52		7+19 +44.5 +69.5 +95	7+21.5 +47 +72 +97.5	#914 #499		4321 E. Lewis 4327 E. Lewis		8-27-28 11-16-36	
8	168.95	163.39	5.56		8+20 +43 +66 +84	8+22.5 +45.5 +68.5 +86.5	#445 #332 #289	#255 #138	408 S. Belmont 412 S. Belmont 412 S. Belmont	419 S. Crestway 429 S.R. Crestway	5-27-26 5-2-27 4-13-26	3-26-30 see Below 11-19-03 3-1-30
9	169.15	163.55	5.60		9+09 +34.5 +60 +85.5	9+11.5 +37 +62.5 +88		#257 #499	431 S. Crestway 427 S. Crestway		7-6-36 10-15-31	
10	168.95	163.71	5.24		10+10.5 +59.5 +60 +86.5	10+13 +38.5 +63.5 +89	#57 #453	#6244 #6850 #5618	4318 E. Kellogg 4322 E. Kellogg	4328 E. Kellogg 4328 E. Kellogg	2-5-31 9-1-31	2-12-68 2-12-68 5-12-66
11	167.55	163.87	3.68	11+12	11+04	11+06.5						
5				5+97								
6	175.32	163.21	12.11		6+33 +58 +83.5	6+35.5 +60.5 +86		#853	4123 E. Lewis		9-7-48	
7	175.72	163.53	12.19		7+09 +34 +59 +84	7+11.5 +36.5 +61.5 +86.5	#936		402 S. Fountain		8-30-28	
8	175.32	163.85	11.47		8+09 +35 +60 +86	8+11.5 +37.5 +62.5 +88.5	#575 #975		414 S. Fountain 422-24 S. Fountain		7-8-27 7-21-49	
9	174.72	164.17	10.25		9+11 +34 +53 +82	9+13.5 +36.5 +55.5 +84.5	#684 #304 #965	#469	428 S. Fountain 432 S. Fountain	437 S. Belmont 443 S. Belmont	8-9-26 4-17-26	6-7-27 6-3-27
10	173.12	164.49	8.63		10+10 +35 +60 +85	10+12.5 +37.5 +62.5 +87.5	#306 #466	#504 #415	430 S. Fountain 411 S. Belmont 412 E. Kellogg	439 S. Belmont 416 E. Kellogg	9-1-25 4-25-27 5-1-29	6-17-27 4-23-29
11	171.42 171.22	164.81 164.84	6.61 6.38	11+11	11+03	11+05.5		#465	411 C. E. Kellogg		5-1-29	

2008-03034-1119103-423 S Crestway-1119103-Rans Pibg- Repair middle of SWR 50"4" PVC

95-161009 10-11-95 410 S Fountain - Entry - (D.L. Fed. cover 2' with 4" ABS 40 age repair by city)

95-15948-7 10-10-95 401 S. Belmont - Entry Pibg - Tap (by city) at 7+71.9 4" ABS sch 40

95-15949-7 10-10-95 405 S Belmont - Entry Pibg - Tap (by city) at 7+72.9 4" ABS sch 40

95-15958-7 10-10-95 411 S. Belmont - Entry Pibg - Tap (by city) at 7+73.9 4" ABS sch 40

Permission granted per A. Warren Supt. Water Dept. to Ran Bldg Sewers for 401, 405 and 411 Belmont thru 10' public utility easement. Plans of 4123 E. Lewis (lots 1, 2) Add Hazards agency required. The Belmont addresses were all combined at 11-78-9 until this separation.

96-187427 11-4-96 443 S. Crestway - McCulloch

- #751 - Tap - 446 S. Fountain - 9-1-26
- #981 - Tap - 441 S. Belmont - 11-26-26
- #477 - Tap - 410 S. Fountain - 6-6-27 - Simmons
- #1049 - Tap - 421 S. Belmont - 11-9-27 - Wyant
- #825 - Private line conn. - 432 S. Belmont - 7-6-27 - Dermody Pibg.
- #613 - Tap - 401 S. Crestway - 6-17-30 - Dermody Pibg.
- #3188 - Tap - 4302-04 E. Kellogg - 11-24-50 - Ray Bryant (10+58.5) old tap
- #1331 - Conn. at 9+86 - 416 E. Kellogg - 12-23-47 - W.A. Gittich
- #972 - Private line - 405 S. Crestway - 10-24-30 - Dermody Pibg. Co.
- #44 - Private line - 409 S. Crestway - 1-29-31 - Dermody Pibg. Co.
- #1930 - Tap - 4120 E. Kellogg - 10-30-29 - Frederick Pibg. Co.
- #1331 - Tap - 4116 E. Kellogg - 12-23-47 - W.A. Gittich.

CONSTRUCTION RECORD						SERVICE RECORD						
STATION	ELEVATION		Depth	MANHOLE	4-INCH "Y" BRANCHES		No. of Permit		House Number		DATE OF PERMITS	
	Ground	Grade			North West	South East	North West	South East	North West	South East	North West	South East
3+0	177.58	168.39	9.19		2+81.8		#656				6-12-22	
					3+06.5							
					+31.8							
				3+51.4	+57.2							
					+81.8							
4+0	177.97	169.69	8.28		4+07.8		#2632		4125 E. English		12-1-24	
					+30.4							
					+55.8							
					+81.4		#1193		4139 E. English		10-31-25	
5+0	177.71	170.09	7.62		5+07							
					+32.2							
	177.24	170.34	6.90	5+64.8	+57.4							