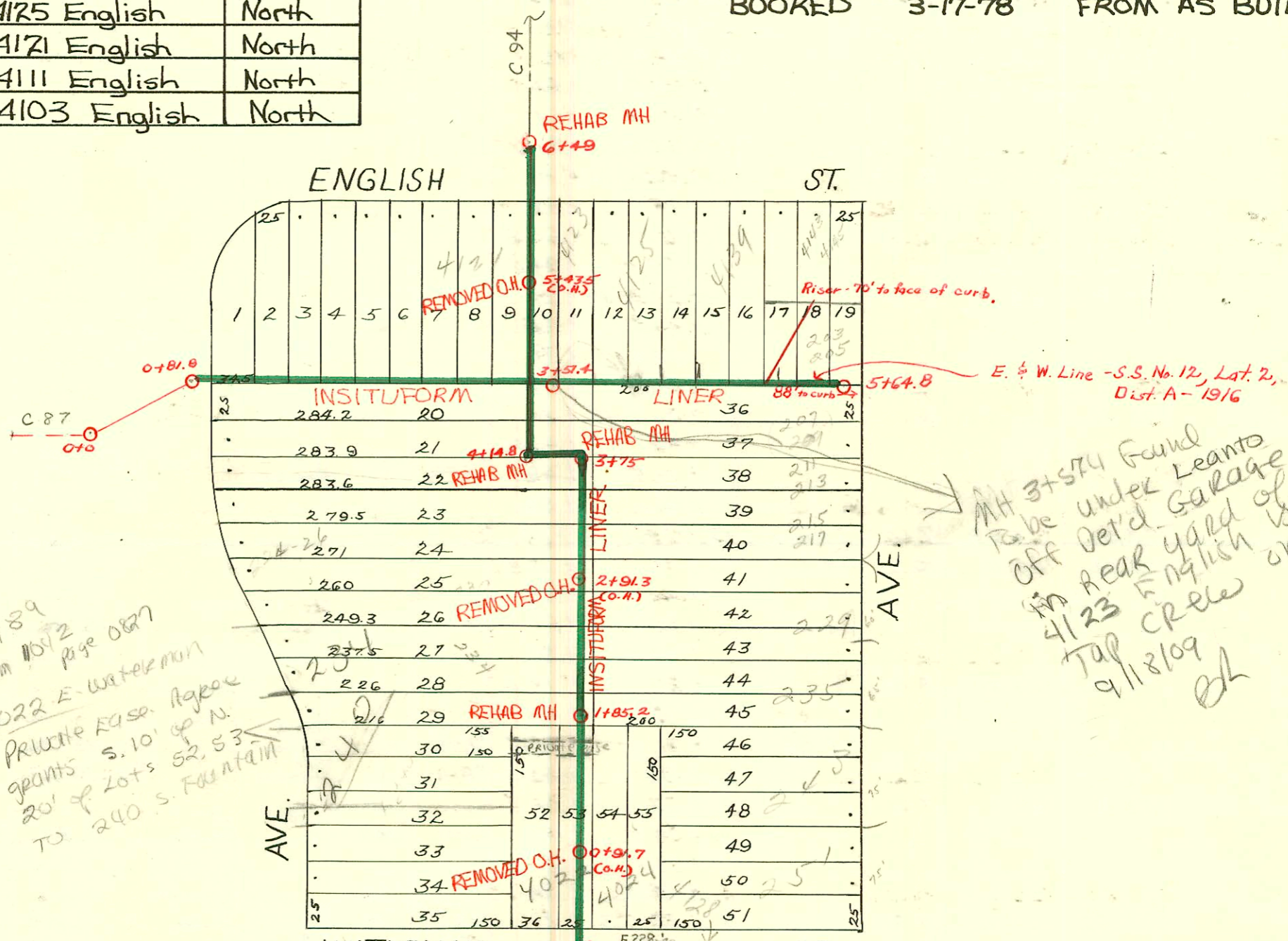


**RECONNECTIONS**

STATION	ADDRESS	DIRECTION
5+12.7	413 & 4145 English	North
4+54.7	207, 209, 211, 213 Belmont 215 & 217 Belmont	South
4+15.2	4125 English	North
2+88.8	4121 English	North
2+25.3	4111 English	North
1+41.3	4103 English	North

DIST. A - S.S. No. 12  
1912

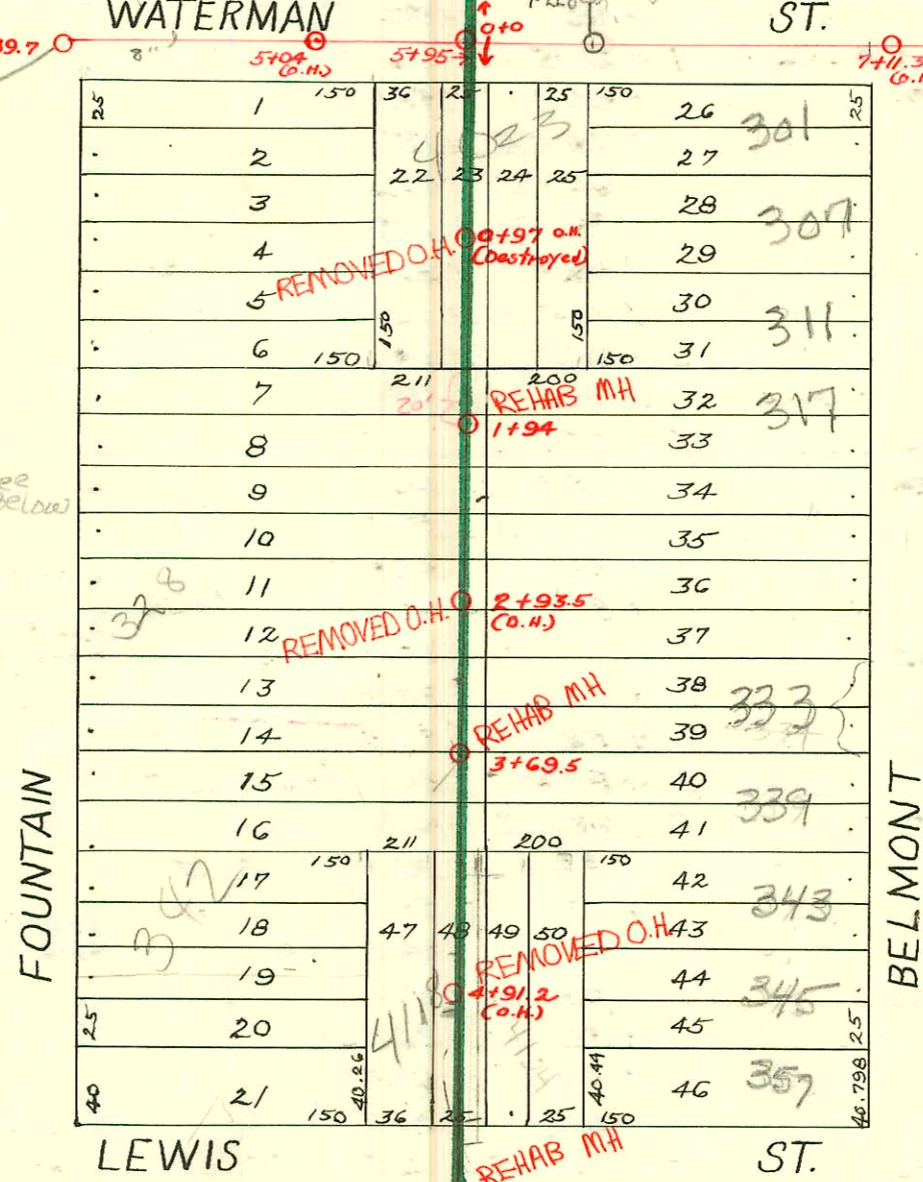
1992 SANITARY SEWER REHABILITATION PROGRAM - PHASE I  
 PROJ. NO. 468-82220 (631879)  
 BUILT BY INSITUFORM PLAINS, INC.  
 BOOKED 3-17-78 FROM AS BUILTS



MH 3+574 Found to be under Leanto off Det'd Garage in Rear yard of 4123 English by Top Creel on 9/11/89

**RECONNECTIONS**

STA.	ADDRESS	DIRECTION
5+39.6	4123 English	East
3+64.5	224 & 226 Fountain	West
2+93.3	228 Fountain	West
2+66.2	229 Belmont	East
2+17.3	235 Belmont	East
2+11	234 Fountain	West
1+65	240 Fountain	West
0+93	4024 Waterman	East
0+91.7	4022 Waterman	West



SCALE 1"=100'

STATION	ADDRESS	DIRECTION
5+74.6	350 S. Fountain	West
5+71.9	353 & 345 S. Belmont	East
5+00	4118 & 4120 E. Lewis	West
4+99.4	4122 & 4124 E. Lewis	East
4+33.3	342 S. Fountain	West
4+30.5	343 S. Belmont	East
3+91	338 S. Fountain	West
3+59.6	339 S. Belmont	East
3+37.3	333 S. Belmont	East
2+88.1	327 & 329 S. Belmont	East
2+83.2	328 S. Fountain	West
2+38.2	325 S. Belmont	East
2+35.9	324 S. Fountain	West
2+15	310 S. Fountain	West
1+88	317 S. Belmont	East
1+60.1	311 S. Belmont	East
1+56.7	307 S. Belmont	East
1+33.2	4023 E. Waterman	West
3+34.9	? S. Fountain	West

2001-00459-3/2/01- 234 S Fountain - 4" Wye Pipe Burst Replacement - PE SDR17 - 17.5' N of MH 1+85.2 - Replaced entire line - no alley  
 SWR 2001-01936 - 8/3/01 - 353 S Belmont - Nowak Const - 4" PVC - Replaced 3' section of line 90' from main

CONSTRUCTION RECORD

SERVICE RECORD

STATION	ELEVATION		Depth	MANHOLE	4-INCH "Y" BRANCHES		No. of Permit		House Number		DATE OF PERMITS	
	Ground	Grade			North West	South East	North West	South East	North West	South East	North West	South East
3	173.44	160.47	12.97	3 + 89.7	3 + 98.5	3 + 96						
4	173.54	160.51	13.03		4 + 23 + 49 + 74 + 99.5	4 + 20.5 + 46.5 + 71.5 + 97	#85	#885	4103 4009 E. Walnut		11-23-22	7-24-22
5	174.01	160.91	13.10		5 + 25 + 50	5 + 22.5 + 47.5						
	174.11	161.29	12.82	5 + 95	+ 75	+ 72.5						
6	174.11	161.30	12.81		6 + 04 + 26.5 + 51.5 + 76.5	6 + 01.5 + 24 + 49 + 74 + 99						
7	174.01	161.46	12.55		7 + 01.5 + 27 + 52.5 + 78.5	+ 24.5 + 50 + 76		#584	301 S. Belmont			2-23-54
8	173.31	161.62	11.69	8 + 28								
0	174.15	161.29	12.86	0 + 0	0 + 11.5 + 37 + 62 + 87	0 + 09 + 34.5 + 59.5 + 84.5						
1	174.45	162.89	11.56		1 + 12 + 37 + 62 + 94 + 12.5	1 + 09.5 + 34.5 + 59.5 + 91.5 + 10	#1117 #790		4022 E. Waterman 4026 E. Waterman		12-17-27 7-1-29	
				1 + 85.2	1 + 37 + 62 + 94 + 12.5	1 + 34.5 + 59.5 + 91.5 + 10	#23069 #243		see below 240 S. Fountain 245 Fountain		5-3-89 3-25-26	
2	175.15	164.49	10.66		2 + 12.5 + 37 + 62 + 87.5 + 106	2 + 10 + 34.5 + 59.5 + 85 + 106	#952 #2071	#733	234 Fountain 30 v. Fountain	239 S. Belmont	5-3-81 3-2-21 4-26-24	4-25-50
					+ 37 + 62 + 87.5	+ 34.5 + 59.5 + 85	#1339		223 S. Belmont		9-11-24	10-11-22
3	176.15	166.09	10.06		3 + 12 + 37.5	3 + 09.5 + 35						
	176.85	167.30	9.55	3 + 75	+ 60	+ 57.5	#331					4-17-22
4	176.75	167.69	9.06	4 + 14.8	4 + 28.5 + 54	4 + 26 + 51.5						
+ 16	176.65	167.94	8.71		+ 79.5	+ 77						
5	177.75	168.44	9.31		5 + 04.5 + 30 + 55.5 + 80.5	5 + 02 + 27.5 + 53 + 78		#298 #437				4-20-20 3-8-24
6	178.65	169.04	9.61		6 + 03.5 + 49	6 + 01 + 49						
0	173.75	161.29	12.46	0 + 0	0 + 77 + 30	0 + 79.5 + 32.5						
1	173.65	161.61	12.04		1 + 03.5 + 55 + 81	1 + 06 + 57.5 + 83.5	#491 #971		313 S. Belmont 310 S. Fountain		4-7-23 11-12-26	
				1 + 94	+ 81	+ 83.5	#401		315 S. Belmont			4-20-25
2	173.75	161.93	11.82		2 + 05 + 31 + 56	2 + 07.5 + 33.5 + 58.5	#972		314 S. Fountain		11-12-26	
					2 + 81.5	2 + 84	#968	#297	325 S. Belmont 329 S. Belmont		8-14-26 11-10-26	3-30-25
3	173.95	162.25	11.70		3 + 07 + 32 + 53 + 82	3 + 09.5 + 34.5 + 55.5 + 84.5	#343	#1325 #1324	333 S. Belmont 339 Belmont		3-3-24 9-19-29	9-19-29
				3 + 69.5	+ 82	+ 84.5	#2505		338 S. Fountain		11-8-24	
4	174.15	162.57	11.58		4 + 08 + 33 + 59 + 84	4 + 10.5 + 35.5 + 61.5 + 86.5						
5	174.75	162.89	11.86		5 + 10 + 35 + 60	5 + 12.5 + 37.5 + 62.5	#355		418 E. Lewis		5-24-23 5-7-27	
	175.32	163.21	12.11	5 + 97	+ 60	+ 62.5	#1663		357 S. Belmont			7-19-24
Sub. #2 of "A" of "12" South Lateral 1		165.75 166.46 166.63		M.H. = old flush tank 0 + 81.8	1 + 05 + 31.2 + 55.9 + 81.4		#837					11-10-20
2	176.54	167.51	9.03		2 + 06.8 + 32.5 + 55.7							

Cont. on page 92-A

#1184 - Tap - 350 S. Fountain - 27' No. of 5197  
 #100 - Tap - 412A E. Lewis - 12-13-27  
 #189 - Tap - 343 S. Belmont - 3-2-28  
 #834 - Tap - 221 S. Belmont - 8-7-28  
 #835 - Tap - 221 S. Belmont - 8-7-28  
 #946 - Tap - 307 S. Belmont - 8-7-28  
 #928 - Tap into M.H. - 220 S. Fountain - 12-28-23 (M.H. 0+81.8)  
 #5951 - Tap - 250 S. Fountain - Joe M. Donald - 8-8-55  
 #886 - Tap - 342 S. Fountain - 4-19-24  
 #836 - 221 S. Belmont - 8-7-28  
 #837 - 221 S. Belmont - 8-7-28

92-20 194-7 8/12/92 328 S. Fountain - Kimp P/ly

92-20 194-7 8/12/92 328 S. Fountain - Kimp P/ly

92-20 194-7 8/12/92 328 S. Fountain - Kimp P/ly