

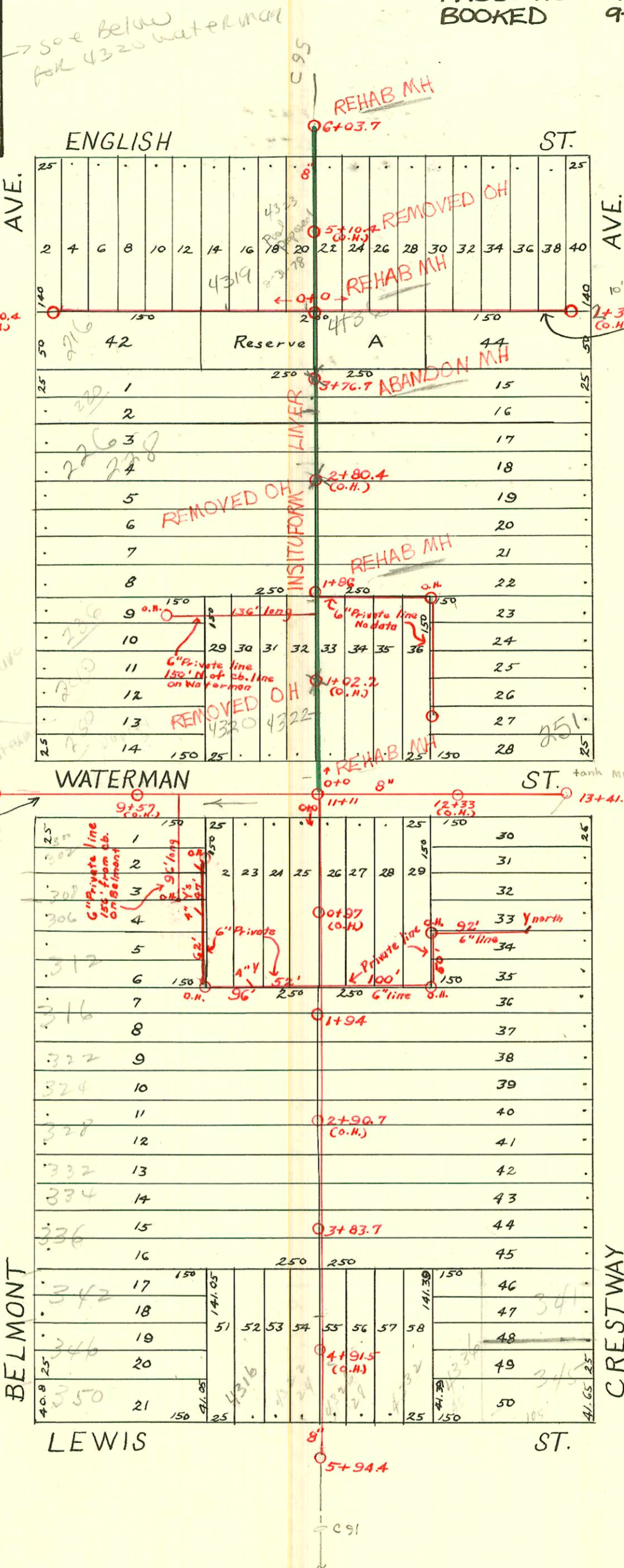
RECONNECTIONS

C 93 A

STATION	ADDRESS	DIRECTION
5+05.8	4323 E. English	West
4+90.8	4331 E. English	East
3+46.7	220 & 222 S. Belmont	West
3+23.5	223 S. Crestway	East
3+16.8	226 & 228 S. Belmont	West <i>See below</i>
2+98.9	225 S. Crestway	East
2+47.6	230 S. Belmont	West
2+45.1	229 S. Crestway	East
1+99.3	232 & 234 S. Belmont	West
1+71.4	4306 & 4320 E. Waterman 236 & 240 S. Belmont	West
1+68.8	4330 E. Waterman 243, 245 & 251 S. Crestway	East
0+88.5	4326 E. Waterman	East
0+71.9	4322 E. Waterman	West

DIST. A - S.S. No. 12
1912

1995 SANITARY SEWER REHABILITATION PROGRAM - PHASE III
BUILT BY INSITUFORM PLAINS, INC.
PROJ. NO. N/A (621078)
BOOKED 9-20-95 FROM AS BUILTS



LAT. 2 - DIST. A - S.S. #12
1916

SCALE 1"=100'

LAT. 4 - DIST. A - S.S. #12
1917

2000-02242-4193. Crestway - 141360 - Padgett Ex - 4" SCH 40 ITWIN CO, NO HUB TO CI @ house, soil pipe ext
1 Fernco to clay

2001-00714-3/30/01-4320 E Waterman - B&L EXC - 4" SCH 40 Donut 22" w/ of EPL TO 6" Private Line - 1 Fernco to
CI @ house - ITWIN CO, 2V22, 1H45

2002-03198-1125/02-226 S Belmont - Sam Bangle - City made new tap 294' N of MH stop (in water man)
(at 94) 2H45, 2 twin co, tied to claytile

CONSTRUCTION RECORD

SERVICE RECORD

STATION	ELEVATION		Depth	MANHOLE	4-INCH "Y" BRANCHES		No. of Permit		House Number		DATE OF PERMITS	
	Ground	Grade			North West	South East	North West	South East	North West	South East	North West	South East
8	173.31	161.62	11.69	8+28	8+67 +94.5	8+64.5 +92						
9	172.41	161.78	10.63		9+19.5 +44.5 +69.5 +95.5	9+17 +42 +67 +93						
10	170.01	161.94	8.07		10+20.5 +45.5 +71 +97	10+18 +43 +68.5 +94.5						
11	172.71	162.10	10.61	11+11	11+22.5 +47.5 +73.5 +98.5	11+20 +45 +71 +96						
12	173.41	163.89	9.52		12+23.5 +46 +71.5 +96.5	12+21 +43.5 +69 +94	#2000-02644 570	251 S. R Crestway	see Below	12-1-00 7-1-26		
13	173.51	165.89	7.62	13+41.1	13+22.5	13+20						
0	173.02	162.11	10.91	0+0	0+19 +44 +69.5 +94.5	0+16.5 +41.5 +67 +92			432 E Waterman		3-18-26	
1	172.12	163.31	8.81	1+86	1+20 +45.5 +71 +98	1+17.5 +43 +68.5 +95.5	Private line #878 #818	230 S. Belmont 232 S. Belmont		10-13-26 9-30-27		
2	172.12	164.51	7.61		2+23.5 +48.5 +73.5 +98.5	2+21 +46 +71 +96	#2501 #348	230 S. Belmont	227 S. Crestway	7-15-40	4-9-28	
3	173.62	165.71	7.91	3+76.7	3+23.5 +48.5 +71.5 +96	3+21 +46 +69 +93.5	#2002-02644 #199 #2322	#432 #576 226 S. Belmont 229 S. Belmont	see next pg 225 S. Crestway 221 S. Crestway	3-19-29 10-14-24	5-26-27 7-8-27	
4	174.32	166.86	7.46		4+21 +46 +71 +96	4+18.5 +43.5 +68.5 +93.5						
5	175.32	167.86	7.46		5+21.5 +46.5 +96.5	5+19 +44 +94						
6	176.62	168.86	7.76	6+03.7								
0	172.85	162.11	10.74	0+00	0+09.5 +34.5 +59.5 +85	0+12 +37 +62 +87.5	#807 #704	#808 4319 E. Waterman 312 S. Belmont	4323 E. Waterman	9-27-27 8-16-26	9-27-27	
1	173.05	162.27	10.78	1+94	1+11 +36 +58	1+13.5 +38.5 +60.5						
2	172.75	162.43	10.32	2+08	2+08 +33 +58.5 +84	2+10.5 +35.5 +61 +86.5	#226 #926 #841 #86	316 S. Belmont 328 S. Belmont	323 S. Crestway	3-28-50 7-24-29	7-9-29	
3	172.25	162.59	9.66	3+09	3+09 +34 +60 +93	3+11.5 +36.5 +62.5 +95.5	#19 #1312	328 S. Belmont	327 S. Crestway	3-31-36 1-10-27	1-18-29	
4	171.15	162.75	8.40	4+18	4+18 +43.5 +69 +97	4+20.5 +46 +71.5 +99.5	#126 #1041 #1099	336 S. Belmont	341 S. Crestway	12-8-25 2-25-27	2-25-27	
5	169.55	162.91	6.64	5+22	5+22 +47	5+24.5 +49.5		342 S. Belmont	4328 E. Lewis	9-22-25	12-13-27	
	166.25	163.07	3.18	5+94.4								

Cont. on Page 93-A.

Repair- 2000-02644- 12/1/00 - Ark Valley Pkwy - 4" sch 40 - Fernco to clay @ street / Fernco to CI @ house - 2H22

Repair 97-210647 220 S Belmont - Smith Callahan - Repl. partial line with 4" sch 40 PVC 3' C.O.S. wye 24" S.P. 111 in English

Repair 2003-02234 220 S Belmont - 12/16/03 - OK Contracting - City wye repair - 4" Predco 89's of mit 3+76.7 (2+87.7) 2V22

CONSTRUCTION RECORD						SERVICE RECORD						
STATION	ELEVATION		Depth	MANHOLE	4-INCH "Y" BRANCHES		No. of Permit		House Number		DATE OF PERMITS	
	Ground	Grade			North West	South East	North West	South East	North West	South East	North West	South East
0	175.06	167.50	7.56	0+00	0+06.8		#1095		4323 E. English		10-5-25	
					+27.0							
					+52.0							
					+77.5							
					+97.5							
1	174.24	168.00	6.24		1+27.0							
					+52	1+49.5						
					+77	+99.5						
2	174.22	168.50	5.72		2+02.2		#1083		4345 E. English		10-9-28	
	174.14	168.65	5.49	2+30.7(G.H.)	+27							
0	175.06	167.50	7.56	0+00	0+04.0							
+30	174.89	167.65	7.24		+28.8							
					+53.6							
					+78.4		#1096		4319 E. English		10-5-25	
1					1+03							
+30	175.54	168.15	7.39		+26.5	1+52.5	#533				3-24-24	
					+55							
					+79.4							
2					+04.3	+01.8	#1733		4301 E. English		9-20-49	
+30	176.29	168.65	7.64		+26.6							
				2+30.4(G.H.)								

#192 - Tap - 4326 E. Waterman
 #1049 - Tap - 245 S. Crestway - 12-6-26
 #10 - Tap - 246 S. Belmont - 1-6-27
 #703 - Tap - 309 S. Crestway - 8-20-27 - Dermody
 #861 - Private line - 243 S. Crestway - 10-11-27
 #892 - Tap - 302 S. Belmont - 10-20-27 - M.L. Lansdowne
 #156 - Tap - 308 S. Belmont - 2-23-28
 #508 - Tap - 302 S. Belmont - 5-14-28 - Simmons P/bg.
 #1030 - Private line - 335 S. Crestway - 9-21-28 - Dermody P/bg.
 #1055 - Private line - 4327 E. Waterman - 9-27-28 - C.M. Wyant
 #51 - Private line - 4312 E. Lewis - 2-13-29 - R.H. Anderson (4316?)
 #138 - Tap - 215 S. Crestway - 3-8-29 - H.J. Geile
 #206 - Private line - 4315 E. Waterman - 3-20-29 - Home Builders P/bg. Co.

#303 - Tap - 4335 E. English - 4-4-29 - C.A. Baker
 #644 - Private line - 333 S. Crestway - 6-3-29 - Dermody P/bg.
 #288 - Tap - at 0+87.5 - 4335 E. English - 4-21-27
 #1629 - Private line - 315 S. Crestway - 7-15-50 - E.B. Brinnon