

DIST. A - S.S. No. 12  
1912

1992 SANITARY SEWER REHABILITATION PROGRAM - PHASE 1  
PROJ. NO. 468-82220 (631879)  
BUILT BY INSITUFORM PLAINS, INC.  
BOOKED 3-17-93 FROM AS BUILTS

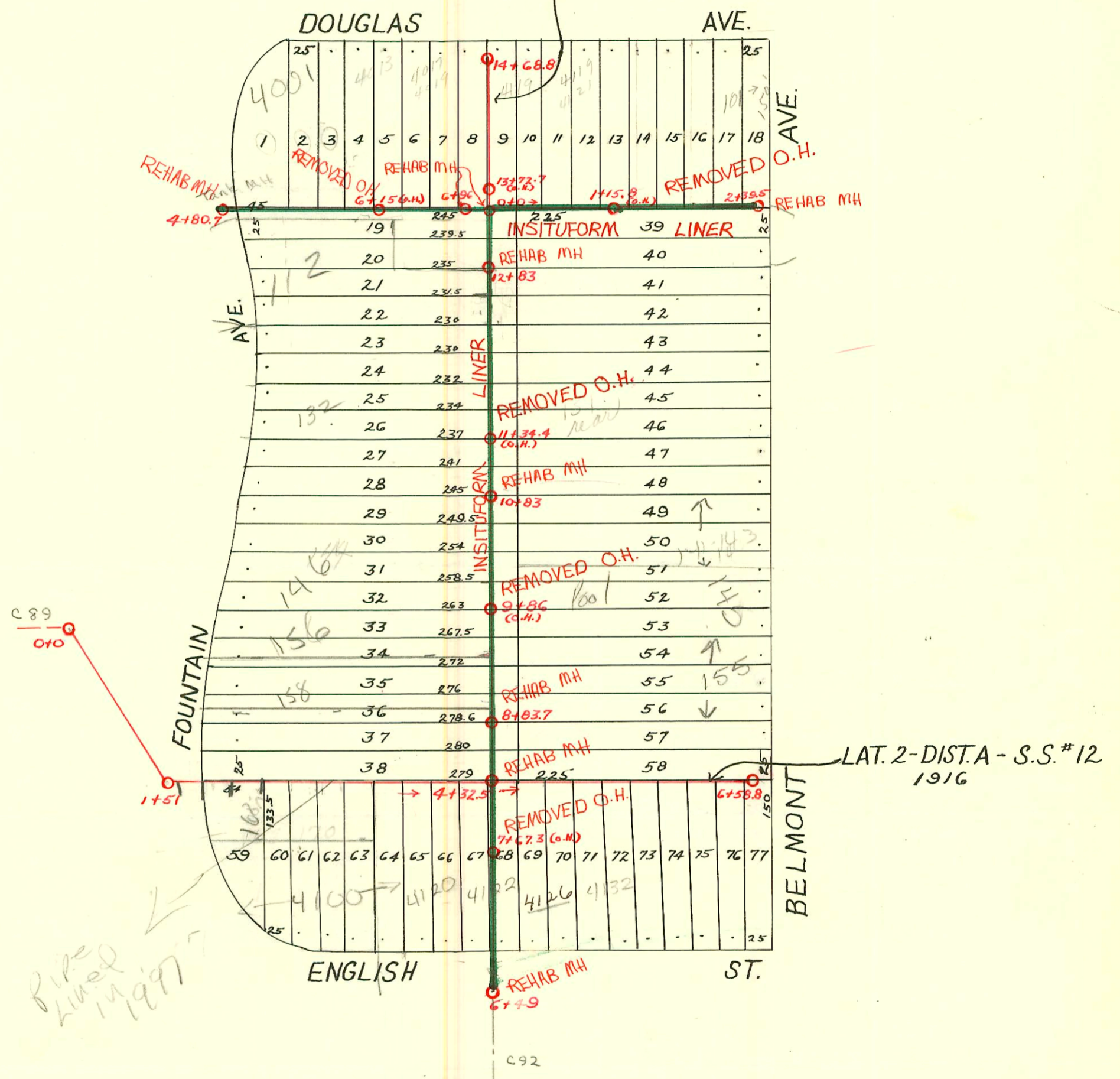
1994 SANITARY SEWER REHABILITATION PROGRAM PHASE 1  
PROJ. NO. 468-82399 (623124)  
BUILT BY INSITUFORM PLAINS INC.  
BOOKED 2-13-95 FROM AS BUILTS

RECONNECTIONS

STATION	ADDRESS	DIRECTION
2+03	101 S. Belmont	North
1+63.2	115 S. Belmont	South
1+59.8	4129-4131 Douglas	North
1+40.5	119, 125, 129 Belmont	South
1+14.5	115 Belmont	South
1+02.8	4125-4127 Douglas	North
0+49.6	4119-4121 Douglas	North

replace & entire line & reconnected in carport garage - N/C

Sub. 1 - Dist. A - S.S. No. 12  
1913



RECONNECTIONS

STATION	ADDRESS	DIRECTION
12+57.6	112 S. Fountain	West
11+85.9	126 & 126 1/2 S. Fountain	West
11+33.9	132 S. Fountain	West
11+09	136 S. Fountain Apts. 1+2	West
11+06.2	131 S. Belmont	East
10+52.3	144 S. Fountain	West
10+35.8	141 & 143 S. Belmont	East
10+05.4	146 S. Fountain	West
9+78	145 S. Belmont	East
9+40.9	156 & 158 S. Fountain	West
9+31.5	155 S. Belmont	East
7+03.6	4122 E. English	East
6+66.1	4120 E. English	West
6+50.3	4017 & 4019 E. Douglas	North
6+02.1	4013 E. Douglas	North
5+11.4	4001 E. Douglas	North

SCALE 1"=100'

4" SDR35, 4" PVC, tap @ 9190.0 - 93' south - reconnected line to pt shown

2002-01237 Reddi-4" PESDR17 Pipe burst repl, twin co @ house, twin co 90' out, 2 Vsd. city wye repair 44.7' N of MH 8+33.4 (9+23.1)

1/16/04 2004-00148 - Reddi Ind - city wye repair 4" Pred co 26' E of MH 4+80.7 (5+06.7) 4" PVC, 2 twin co, 1 WYE, 1 V22

CONSTRUCTION RECORD							SERVICE RECORD					
STATION	ELEVATION		Depth	MANHOLE	4-INCH "Y" BRANCHES		No. of Permit		House Number		DATE OF PERMITS	
	Ground	Grade			North West	South East	North West	South East	North West	South East	North West	South East
6	178.65	169.04	9.61	6 + 49	6 + 75.5	6 + 73	#1046				10-8-21	
7	178.97	169.64	9.33		7 + 27.5 + 52.5 + 79.5	7 + 25 + 50 + 77		#381				5-9-21
8	180.17	170.24	9.83		8 + 02.5 + 28.5 + 52.5	8 + 00 + 26 + 50						
				8 + 83.7	+ 78.5	+ 76						
9	181.27	170.84	10.43		9 + 02.5 + 26.5 + 52 + 77	9 + 00 + 24 + 49.5 + 74.5	#1097	#2075 #1278	142 S. Fountain 145 S. Belmont	155 S. Belmont see 2195 OVER →	7-24-19	4-30-02 8-28-23
10	181.77	171.44	10.33		10 + 02.5 + 52	10 + 00 + 25 + 49.5	#999		144 S. Fountain		9-10-25	
				10 + 83	+ 78	+ 75.5						
11	181.97	172.04	9.93		11 + 02.5 + 27.5 + 53.5 + 79	11 + 00 + 25 + 51 + 76.5	#319	#4728	134-36 S. Fountain 160 S. Fountain 132 S. Fountain	129 S. Belmont (Rev) (R)	4-2-28 2-7-18 8-8-75	5-24-51
12	181.97	172.64	9.33		12 + 03.5 + 29 + 54.5	12 + 01 + 26.5 + 52	#19		120 S. Fountain		1-6-22	
				12 + 83	+ 78	+ 75.5		#1419				12-18-19
13	182.47	173.24	9.23		13 + 07.5 + 32.5 + 58.5	13 + 05 + 30 + 56						
					+ 83.5	+ 81	#1124		4117 E. Douglas		8-22-29	
14	183.27	173.84	9.43		14 + 09 + 34.5	14 + 06.5 + 32						
	183.97	174.26	9.71	14 + 68.8	+ 59.5	+ 57						
4	174.03	165.75	8.28	4 + 80.7								
5	174.93	166.20	8.73		5 + 00 + 26 + 51 + 74.5 + 99.5		#1139		4101 Douglas	see 2944 →	8-9-19	
								#339			7-12-15	
6	178.63	168.70	9.93		6 + 22.5 + 48 + 73.5 + 88		#1650		4015 E. Douglas		8-4-54	
	182.33	171.13	11.20	6 + 96								
0	183.25	173.53	9.72	0 + 0	0 + 17 + 42 + 71 + 96		#2354		4119 E. Douglas		9-13-50	
							#289				4-15-21	
1	185.80	175.53	10.27		1 + 22 + 48 + 73 + 99	1 + 08.8 + 40 + 56.8	#1240	#172			12-13-21	4-11-18
								#293			7-10-16	4-11-18
							#290				5-14-17	
2	187.35	177.53	9.82		2 + 24							
	187.35	178.27	9.08	2 + 39.5								
0	172.76	160.50	12.26	0 + 0								
1		163.50			1 + 51	1 + 85.7	#421		4111 E. ENGLISH		5-18-21	
2	174.06	166.50	7.56		2 + 41	2 + 10.8 + 25.6 + 51.0	#661				9-5-17	
						2 + 76.4		955	4008 E. English		4-28-24	
3	177.43	169.50	7.93		3 + 01.5 + 27.3 + 52.5 + 77.8	3 + 01.5 + 27.3 + 52.5 + 77.8						
4	180.50	172.50	8.00		4 + 03.5 + 27 + 53 + 78.5	4 + 03.5 + 27 + 53 + 78.5	#1905 #1774		4126 E. English		12-31-29	
				4 + 32.5								
5	181.75	174.14	7.61		5 + 04	5 + 04	#1684		4132 E. English		6-18-52	

Cont. on page 94-A

2001-02450 103101 4100 Rev English - Wichita Etc?

CONSTRUCTION RECORD						SERVICE RECORD						
STATION	ELEVATION		Depth	MANHOLE	4-INCH "Y" BRANCHES		No. of Permit		House Number		DATE OF PERMITS	
	Ground	Grade			North West	South East	North West	South East	North West	South East	North West	South East
						5 + 29.2						
						+ 55.2		# 404				9-29-16
						+ 75.8						
6	182.71	175.14	7.57			6 + 01.5		# 370				6-6-17
						+ 26.5						
	182.95	175.64	7.31	G+58.8		+ 51.8						

#385 - Tap - 161 S. Belmont -  
 #290 - Tap - 168 S. Fountain  
 #866 - Tap - 148 S. Fountain - 11-30-20  
 #92 - Tap - 2-10-22  
 #1190 - Tap - 147 S. Belmont - 11-30-21