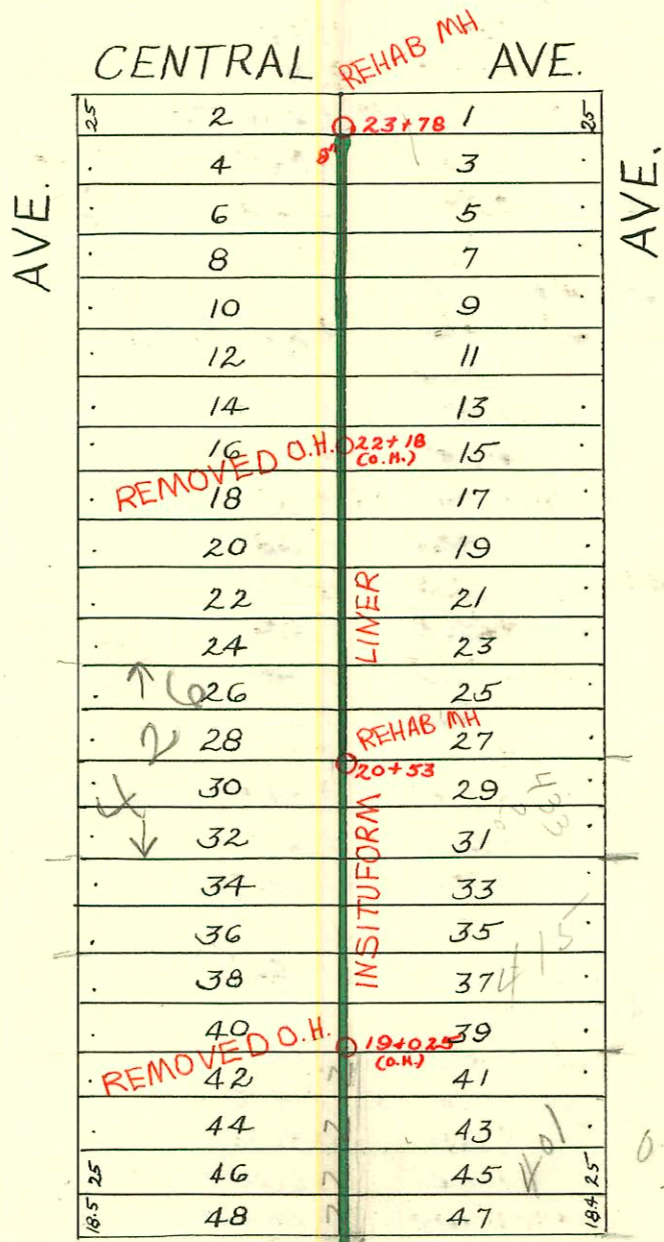


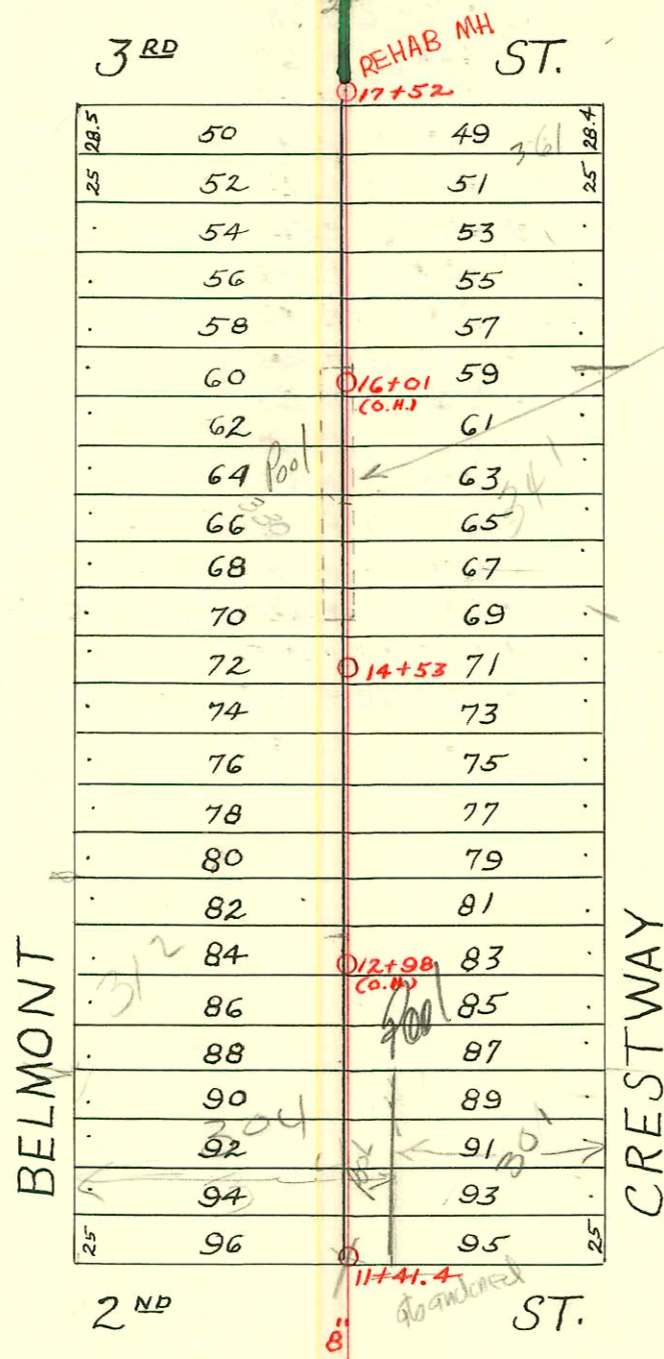
DIST. A - S.S. No. 12
1912



1992 SANITARY SEWER REHABILITATION PROGRAM - PHASE I
 PROJ. NO. 468-82220 (631879)
 BUILT BY INSITUFORM PLAINS, INC.
 BOOKED 3-17-93 FROM AS BUILTS

RECONNECTIONS

| STATION | ADDRESS | DIRECTION |
|---------|--------------|-----------|
| 23+44.5 | 456 Belmont | West |
| 22+80.7 | 445 Crestway | East |
| 22+43.7 | 444 Belmont | West |
| 21+74.4 | 434 Belmont | West |
| 21+50.3 | 433 Crestway | East |
| 20+53.4 | 426 Belmont | West |
| 19+39.6 | 415 Crestway | East |
| 18+74.2 | 400 Belmont | West |
| 18+04.6 | 401 Crestway | East |



OK to run in parking to connect to main now 8/17/95

Slawson see Agreement

| CONSTRUCTION RECORD | | | | | | | SERVICE RECORD | | | | | |
|---------------------|-----------|--------|-------|--------------|---------------------|------------|------------------|------------|-----------------|-----------------|------------------|------------|
| STATION | ELEVATION | | Depth | MANHOLE | 4-INCH "Y" BRANCHES | | No. of Permit | | House Number | | DATE OF PERMITS | |
| | Ground | Grade | | | North West | South East | North West | South East | North West | South East | North West | South East |
| 11 | 191.87 | 183.39 | 8.48 | | 11+31 | 11+28.5 | | | | | | |
| | | | | 11+41.4 | 11+61 | 11+58.5 | | | | | | |
| | | | | | 11+83.5 | 11+81 | | | | | | |
| 12 | 193.27 | 183.84 | 9.43 | | 12+06.5 | 12+04 | #20465-7 #706 | | 304 N Belmont | | 9-1-92 8-9-21 | |
| | | | | | 12+32 | 12+29.5 | #1153 | | 305 N. Crestway | | 10-30-28 | |
| | | | | | 12+57 | 12+54.5 | #1228 | | 315 N. Crestway | | 11-21-28 | |
| | | | | | 12+83 | 12+80.5 | | | | | | |
| | | | | 12+98 (o.H.) | | | | | | | | |
| 13 | 194.67 | 184.24 | 10.43 | | 13+08.5 | 13+06 | #282 | | 317 Belmont | | 7-10-16 | |
| | | | | | 13+33.5 | 13+31 | | | | | | |
| | | | | | 13+59 | 13+56.5 | | | | | | |
| | | | | | 13+85 | 13+82.5 | | | | | | |
| 14 | 196.17 | 184.64 | 11.53 | | 14+07 | 14+04.5 | | | | | | |
| | | | | | 14+32.5 | 14+30 | | | | | | |
| | | | | 14+53 | 14+62.5 | 14+60 | | | | | | |
| | | | | | 14+82.5 | 14+80 | #753 | | 322 Belmont | | 8-20-21 | |
| 15 | 197.91 | 185.04 | 12.87 | | 15+08.5 | 15+06 | #489 | | 341 N. Crestway | | 4-6-23 | |
| | | | | | 15+33.5 | 15+31 | #299 | | 330 N Belmont | | 5-21-18 | |
| | | | | | 15+58 | 15+55.5 | | | | | | |
| | | | | | 15+84 | 15+81.5 | | | | | | |
| 16 | 197.81 | 185.44 | 12.37 | | 16+07 | 16+04.5 | | | | | | |
| | | | | | 16+32 | 16+29.5 | | | | | | |
| | | | | | 16+58 | 16+55.5 | #616 | | | | 12-31-12 | |
| | | | | | 16+83 | 16+80.5 | | 65061 | | 361 N. Crestway | | 8-25-78 |
| 17 | 195.71 | 185.84 | 9.87 | 17+52 | 17+91 | | | 650220 | | 401 N. Crestway | | 8-7-75 |
| 18 | 195.01 | 186.24 | 8.77 | | 18+14.5 | 18+12 | | | | | | |
| | | | | | 18+40 | 18+37.5 | | | | | | |
| | | | | | 18+65.5 | 18+63 | | | | | | |
| | | | | | 18+90.5 | 18+88 | | | | | | |
| 19 | 195.21 | 186.64 | 8.57 | | 19+15.5 | 19+13 | | | | | | |
| | | | | | 19+41 | 19+38.5 | | | | | | |
| | | | | | 19+66.5 | 19+64 | | 16882 | | 415 Crestway | | 8-25-86 |
| | | | | | 19+91.5 | 19+89 | | | | | | |
| 20 | 195.31 | 187.04 | 8.27 | | 20+17.5 | 20+15 | | | | | | |
| | | | | | 20+42.5 | 20+40 | #1079 | 6622 | 426 N. Belmont | 1331 Crestway | 12-20-26 | 9-24-82 |
| | | | | 20+53 | 20+67.5 | 20+65 | | 6621 | | 1331 Crestway | | 9-24-82 |
| | | | | | 20+92.5 | 20+90 | | | | | | |
| 21 | 195.11 | 187.44 | 7.67 | | 21+17.5 | 21+15 | | | | | | |
| | | | | | 21+40.5 | 21+38 | | | | | | |
| | | | | | 21+65.5 | 21+63 | | | | | | |
| | | | | | 21+91 | 21+88.5 | #1338 | | | | 10-11-22 | |
| 22 | 194.81 | 187.84 | 6.97 | | 22+16.5 | 22+14 | | | | | | |
| | | | | | 22+42 | 22+39.5 | #703 | | | | 6-21-22 | |
| | | | | | 22+67 | 22+64.5 | | | | | | |
| | | | | | 22+90 | 22+87.5 | | #1004 | | 457 N. Crestway | | 11-14-27 |
| 23 | 194.71 | 188.24 | 6.47 | | 23+15.5 | 23+12.5 | | | | | | |
| | | | | | 23+40 | 23+37.5 | #1752 | | 456 N. Belmont | | 8-2-39 | |
| | | | | | 23+66.5 | 23+64 | | | | | | |
| | 195.11 | 188.54 | 6.57 | 23+78 | | | | | | | | |

#1088 - Tap - 433 N. Crestway - 10-11-28 - Clark & Smith
 #442 - Tap - 5-4-22
 #B-348 - Tap - 415 N. Crestway - 11-4-63 - King & City (19+45)
 1417 - Tap - 451 N. Crestway - 7-11-56 - Sutter Clark