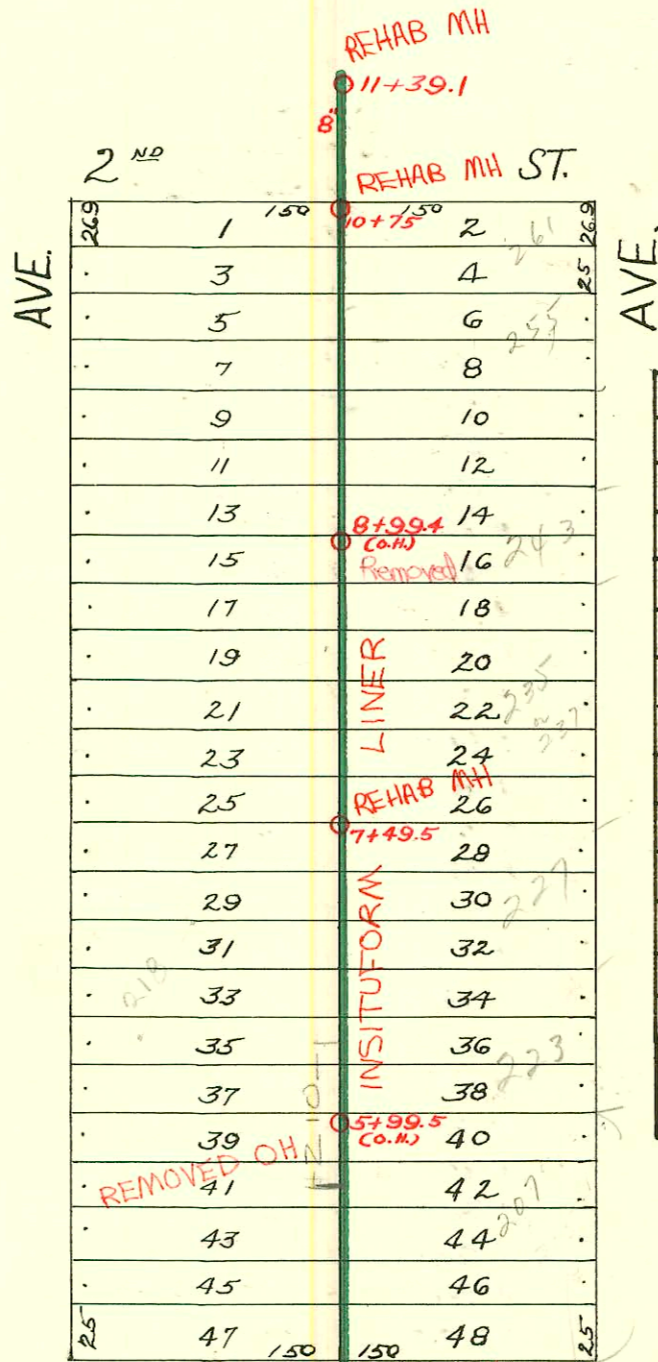


DIST. A - S.S. No. 12
1912

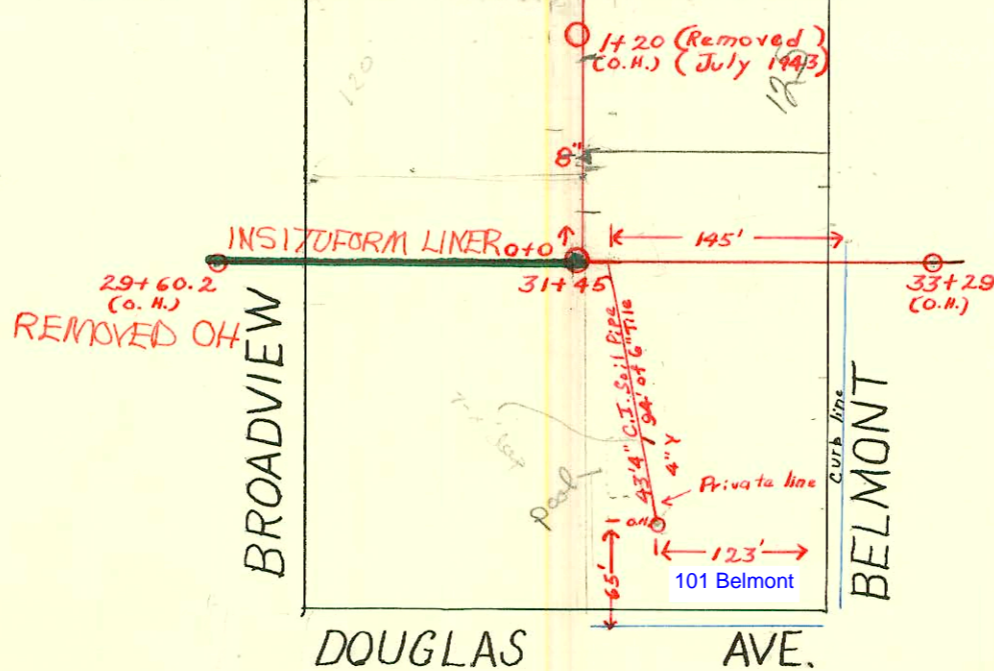
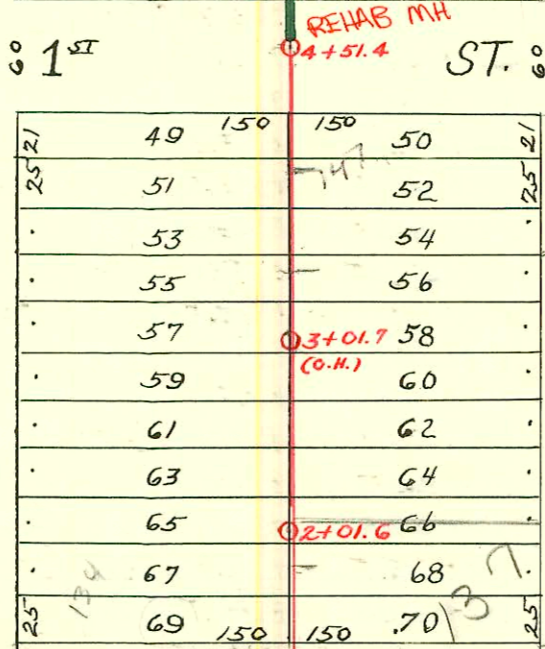
1992 SANITARY SEWER REHABILITATION PROGRAM - PHASE I
PROJ. NO. 468-82220 (631879)
BUILT BY INSITUFORM PLAINS, INC.
BOOKED 3-17-93 FROM AS BUILTS



RECONNECTIONS

STATION	ADDRESS	DIRECTION
10+44.7	246 Broadview	West
10+23.8	255 Belmont	East
9+70.8	240 Broadview	West
9+18.5	243 Belmont	East
8+95.7	236 Broadview	West
8+27.9	234 Broadview	West
8+22.4	235 Belmont	East
7+40.1	227 Belmont	East
7+39.2	228 Broadview	West
6+72.7	218 Broadview	West
5+68.4	202 Broadview	West
5+67.3	210 Broadview	West
5+66.3	207 Belmont	East
31+38.5	181 Belmont 4204 E. Douglas	South
30+54.2	4200 E. Douglas	South

1995 SANITARY SEWER REHABILITATION PROGRAM - PHASE V
PROJ. NO. N/A (621144)
BUILT BY INSITUFORM PLAINS, INC.
BOOKED 1-7-96 FROM AS BUILTS



SCALE 1" = 100'

CONSTRUCTION RECORD						SERVICE RECORD						
STATION	ELEVATION		Depth	MANHOLE	4-INCH "Y" BRANCHES		No. of Permit		House Number		DATE OF PERMITS	
	Ground	Grade			North West	South East	North West	South East	North West	South East	North West	South East
29	189.48	174.93	14.55	29+60.2(0.1)								
30	190.32	175.33	14.99			30+30.5						
31	190.02	175.73	14.29			31+30.5						
				31+45		+82.5	#1027		123 N. Belmont		11-29-26	
32	188.48	176.13	12.35			32+68						
33	187.88	176.53	11.35	33+29(0.1)								
0	189.10	175.86	13.24	0+0	0+30.5	0+28	#1063		123 N. Belmont		12-9-26	
					+57.5	+55	#743		120 N. Broadview		5-16-23	
					+82.5	+80						
1	189.50	176.66	12.84		1+07.5	1+05	#2520		121 N. Belmont		11-11-24	
					+34	+31.5						
					+58.5	+56						
					+84.5	+82	#159	#260	134 N. Broadview		3-5-25	5-9-18
2	189.50	177.46	12.04	2+01.6	2+11.5	2+09	#156		140 N. Broadview		3-4-26	
					+36.5	+34						
					+61.5	+59	#259					5-9-18
					+86.5	+84						
3	189.90	177.86	12.04		3+11.5	3+09	#149	#2065	145 N. Belmont		11-6-22	9-11-24
					+37	+34.5						
					+62.5	+60						
					3+87.5	3+85	#933		147 N. Belmont		11-28-28	5-22-19
4	190.30	178.26	12.04		4+13.5	4+11						
					+38.5	+36						
				4+51.4	+63	+60.5						
					+88.5	+86						
5	190.40	178.66	11.74		5+17	5+14.5						
					+39	+36.5						
					5+64	+61.5	#91	#178	201 N. Belmont		4-10-20	3-17-27
					+90	+87.5	#1537		212 N. Broadview		10-29-29	
6	190.80	179.06	11.74		6+15.5	6+13						
					+39.5	+27	#311				4-22-20	
					+66	+63.5						5-9-18
					+90.5	+88						
7	191.70	179.46	12.24		7+16	7+13.5						
					+40.5	+38.5	#1092	#258			5-13-24	5-9-18
				7+49.5	+66.5	+64						
					+92.5	+90	#18		234 N. Broadview		1-29-25	
8	192.60	179.86	12.74		8+18	8+15.5		#456	241 N. Belmont		6-2-26	
					+39	+36.5						
					+65	+62.5						
					+87.5	+85	#230		236 N. Broadview		4-5-27	
9	193.50	180.26	13.24		9+14.5	9+12		#846				11-17-17
					+40.5	+38						
					+65.5	+63	#663	#331	240 N. Broadview		8-2-26	7-6-15
					+90	+87.5						
10	194.56	180.66	13.90		10+16	10+13.5		#413				6-14-17
					+42	+39.5	#922		246 N. Broadview		10-28-26	
					+64.5	+62						
	194.76	180.96	13.80	10+75								
11	195.16	181.06	14.10	11+39.1								

1999-00482-8/23/99-125 N Belmont - Padgett Exc - 4" SCH 40 Predco 77'6" Nat MHD100 (0+77.6) 1V45

Tap - 101 N. Belmont - 7-21-27 - Reliable Plbg. Co. - Private line
 Tap - 121 N. Belmont - 7-8-28 - Padgett - Private line