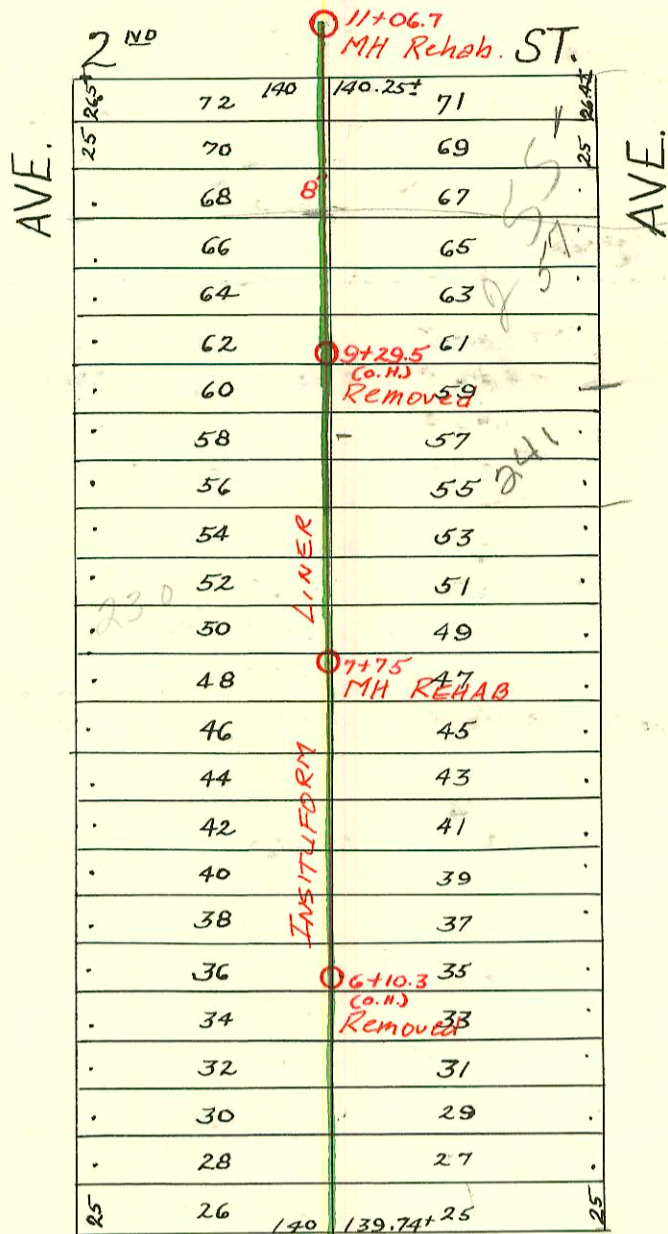
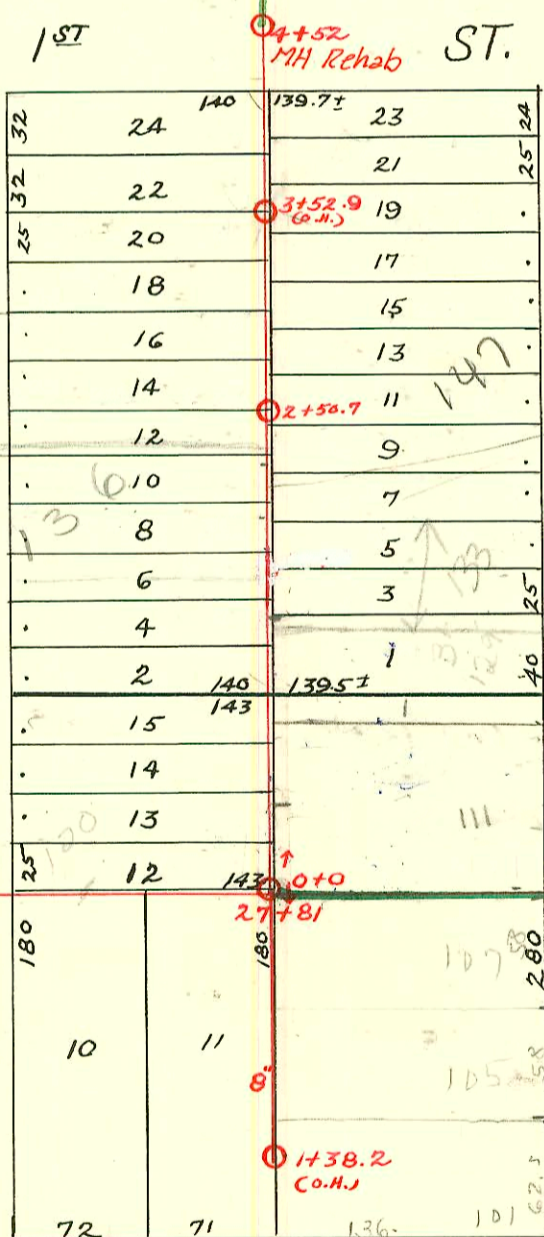


DIST. A-S.S. #12
1912



1991 SAN. SEWER RECONST., PART I
PROJ. NO. 468-82140 (630491)
BUILT BY INSITUFORM PLAINS, INC.



→ Main is on Broadview side P&R field location 121326

LAT. C-DIST. A
1917

1995 SANITARY SEWER REHABILITATION PROGRAM - PHASE V
PROJ. NO. N/A (621144)
BUILT BY INSITUFORM PLAINS, INC.

RECONNECTIONS

STA.	ADDRESS	DIRECTION
28+53.8	107 Broadview	South

CONSTRUCTION RECORD

SERVICE RECORD

STATION	ELEVATION		Depth	MANHOLE	4-INCH "Y" BRANCHES		No. of Permit		House Number		DATE OF PERMITS			
	Ground	Grade			North West	South East	North West	South East	North West	South East	North West	South East	North West	South East
26	178.78	167.67	11.11	26+07.5 (M)	26+63	26+63	#41	#41	120 N. Fountain	R see below	4-3-01	2-21-18	2-21-18	
27	184.38	171.33	13.05		+96	27+31								
						+70.5								
28	187.28	174.53	12.75	27+81	28+10	28+10	#953	#903	3924 E. Douglbs			8-28-25	12-19-17	
						+44								
						+89.5								
29	189.48	174.93	14.55	29+60.2 (M)										
0	186.78	174.64	12.14	0+0	0+23.5	0+23.5		#331	123 Broadview			5-25-17		
					+47.5	0+45								
					+89.5		#651		154 Fountain			9-4-17		
1	187.18	174.88	12.30		1+19.5	1+17	#264	#792	132 N. Fountain			5-1-14	2-4-97	
					+44.5	+42						10-29-17		
					+70	+67.5								
2	186.61	175.12	11.49		1+95	1+92.5	#258	#1300	134 Fountain	141 N. Broadview		4-28-14	10-18-19	
					2+21	2+18.5	#51	#1130	136 Fountain	141 N. Broadview		3-6-16	8-7-19	
					+46	+43.5								
					+70.5	+68		#2003-01585	147 N. R. Broadview	see below		6-18-03	10-22-17	
					+96	+93.5		#774						
3	186.81	175.36	11.45		3+20.5	3+18	#328		144 N. Fountain			8-14-16		
					+46	+43.5		#1352					9-12-23	
					+71	+68.5								
					+96	+93.5		#839	157 N. Broadview				8-8-28	
4	185.91	175.60	10.31		4+22	4+19.5								
					+47	+44.5								
					4+52	+58.5								
					+83.5	+81								
5	185.71	175.84	9.87		5+09.5	5+07	#60	#61				2-17-15	2-1-22	
					+37	+34.5								
					+62.5	+60								
					+87.5	+85	#551	#475	211 N. Broadview			5-24-22	6-7-20	
6	185.61	176.08	9.53		6+15.5	6+13								
					+38.5	+36								
					+63.5	+61	#2048	#1306	212 N. R. Fountain	219 N. Broadview		9-9-24	2-15-85	
					+88.5	+86						12-7-25		
7	185.51	176.32	9.19		7+14	7+11.5	#180	#102				2-2-23	2-26-21	
					+37	+34.5								
					+62	+59.5								
					+89.5	+87								
8	185.21	176.56	8.65		8+12	8+09.5	#264	#130		231 N. Broadview		4-7-21	3-17-31	
					+37	+34.5								
					+62.5	+60								
					+87.5	+85		#2832	241 N. Broadview				3-16-46	
9	185.06	176.80	8.26		9+12.5	9+10		#161	245 N. Broadview				5-23-46	
					+38	+35.5								
					+63	+60.5								
					+88.5	+86								
10	185.06	177.04	8.02		10+13.5	10+11	#125	#160	4001 E. 2nd	253 N. Broadview		8-4-32	7-5-84	
					+39	+36.5							5-23-46	
11	185.66	177.28	8.38	11+06.7										
0	188.89	176.66	12.23	0+0	0+07	0+05.5								
+50	188.43	177.16	11.27		+35.3	+32.8								
					+66.4	+63.9								
					+84.8	+82.2		#44					2-23-18	
1	188.30	177.66	10.64	1+38.2 (M)	1+23.0	1+20.5	#1087	#555	101 N. Broadview			7-21-19	9-7-18	
					+35.8	+33.3		1794 R Connected				see below	2-22-02	
													2-11-87	

2003-01585 6/18/03 147 N Broadview - Wichita Exc - City Tap 4" Predco 4.6' N of MH 2+50.7 (2+55.3) ITWINCO, 2445, 1145

2002-00491-2/22/02-101 N Broadview - Dales Pipe - Pipe Burst 4" PESDRIT tied to wye w/donut, 2 DIRCO, 5' N of MH 1+38.2 (1+33.3) 1145, 1122

2001-00742-4/3/01-120 N Fountain - Wichita Exc - 4" SCH40 - Replace 6' in middle

06/9/33 - J. ... 117 N. Broadview 10-16-38 (R)

Top - 156 N. Fountain - 7-11-28

#901 - Tap 1531 N. Broadview - 9-13-48 - R. La Foy - Hanning