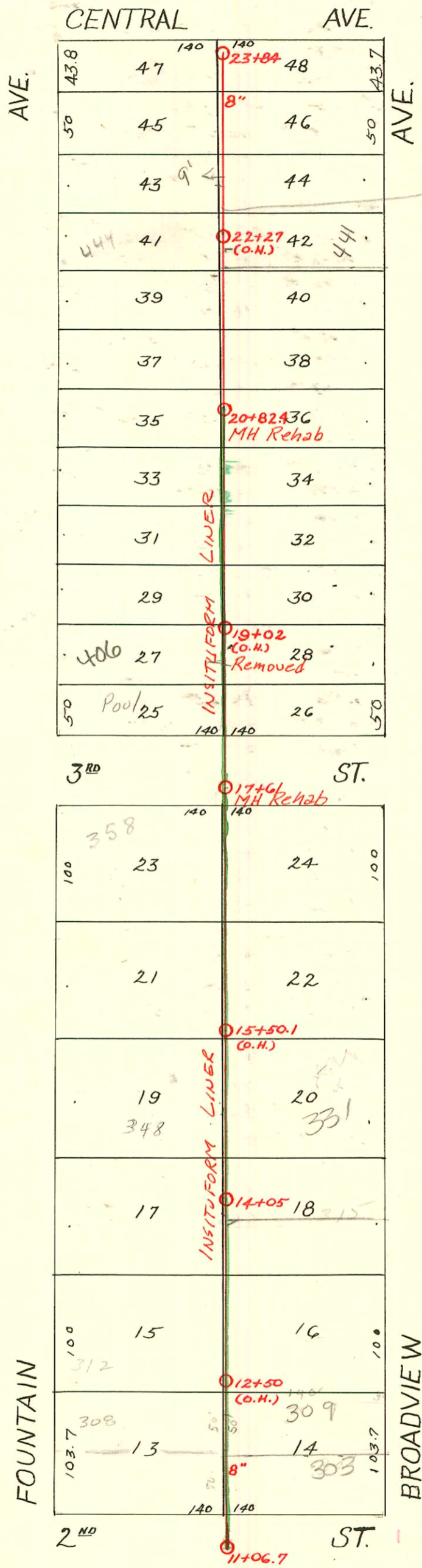


DIST. A-S.S. No. 12
1912



Line approx 9' w. of Telephone poles on opp side as shown
11' Deep
BYR

1991 SAN. SEWER RECONSTR., PART I
PROJ. No. 46B-82140 (630491)
Built By INSITUFORM PLAINS, INC.

1991 SAN. SEW. RECONSTRUCTION PROGRAM PART III
built by INSITUFORM PLAINS

CONSTRUCTION RECORD							SERVICE RECORD					
STATION	ELEVATION		Depth	MANHOLE	4-INCH "Y" BRANCHES		No. of Permit		House Number		DATE OF PERMITS	
	Ground	Grade			North West	South East	North West	South East	North West	South East	North West	South East
11	185.66	177.28	8.38	11+06.7	11+46.5 +72 +97	11+44 +69.5 +94.5	#373 #122 #157		302 N. Fountain 301 N. Broadview	4-14-25 2-25-25		
12	186.16	177.52	8.64		12+23 +48 +73.5 +98.5	12+20.5 +45.5 +71 +96	#2618 #1412 #451		307 N. Broadview	3-2-1900 12-8-19 5-25-21	11-26-24 5-25-23	
13	186.66	177.76	8.90		13+24 +49 +74.5	13+21.5 +46.5 +72 +97.5	#868 #2518		315 N. Broadview	9-21-21 11-10-24	5-25-23	
14	187.56	178.00	9.56	14+05	14+00 +24 +49.5 +74.5	4" SCH 40 14+21.5 +47 +72 +98	#1122 #887	#2003-03226 #1226	319 N R see below Broadview 331 N R - see below Broadview	11-15-21 12-4-17	1-28-02 9-27-24 12-9-03 5-28-24	
15	188.26	178.24	10.02		15+00.5 +25 +48.5 +74 +99	15+22.5 +46 +71.5 +96.5	#859 #1189 #444 #1853			11-21-17 5-22-24 10-30-22 12-17-23		
16	187.76	178.48	9.28		16+24.5 +50 +75 +98	16+22 +47.5 +72.5 +93.5	#2416 #1373 #648		347 N. Broadview 347 N. Broadview	10-27-24 6-12-22	9-18-22	
17	187.56	178.72	8.84		17+23 +98	17+20.5 +95.5	#849			4-16-24		
18	185.96	179.26	6.70	17+61	18+23.5 +49 +74 +99	18+21 +46.5 +71.5 +96.5	#579 #1928 #1624	#2130	402 N. Fountain 401 N. Broadview 415 N. Broadview 406 Fountain 409 N. Broadview	7-25-80 5-26-25 8-25-24 7-15-24	1-30-25 8-25-24 1-17-24	
19	185.11	180.26	4.85		19+23.5 +49 +75	19+21 +46.5 +72.5 +98.5	#438 #916			3-8-24 7-31-22		
20	189.81	181.26	8.55		20+01 +39 +57 +91.5	+36.5 +54.5 +89	#245 #1681			2-20-24 7-21-24		
21	191.46	182.26	9.20	20+824	21+16.5 +42.5 +68 +92.5	21+14 +40 +65.5 +90	#372 #928 #387 #1397	#609	438 N. Fountain	4-21-22 8-1-22 4-17-25 10-21-22	9-21-22 8-1-22	
22	192.76	183.26	9.50	"	22+20.5 +46 +71.5 +96.5	22+18 +43.5 +69 +94	#1391 #1159	#398	441 N R Broadview	9-24-23 9-20-23 8-3-23		
23	194.76	184.26	10.50		23+21.5 +47 +71.5	23+19 +44.5 +69 +78	#1426 #1683 #603 #1385		420 E. Central	9-26-23 11-14-23 10-19-22 12-4-12		

2003-03226-1219103-331 N Broadview - Rd to Rooter - Pipe burst replacement 4" PE SDR17 - City Wye repair
 4" Predco 67' N of MH 14+05 (14+72) 4" PVC 1045
 2002-06243-1128102-319 N Broadview - Wichita Exc - 16' N of MH (on msnet) 4" SCH 40, 1122, 1145, 2022
 Predco Saddle

#757 - Tap - (17+15 West)
 #13268 - private line connection 331 N. Broadview - Simmons Pkg. 8-29-60