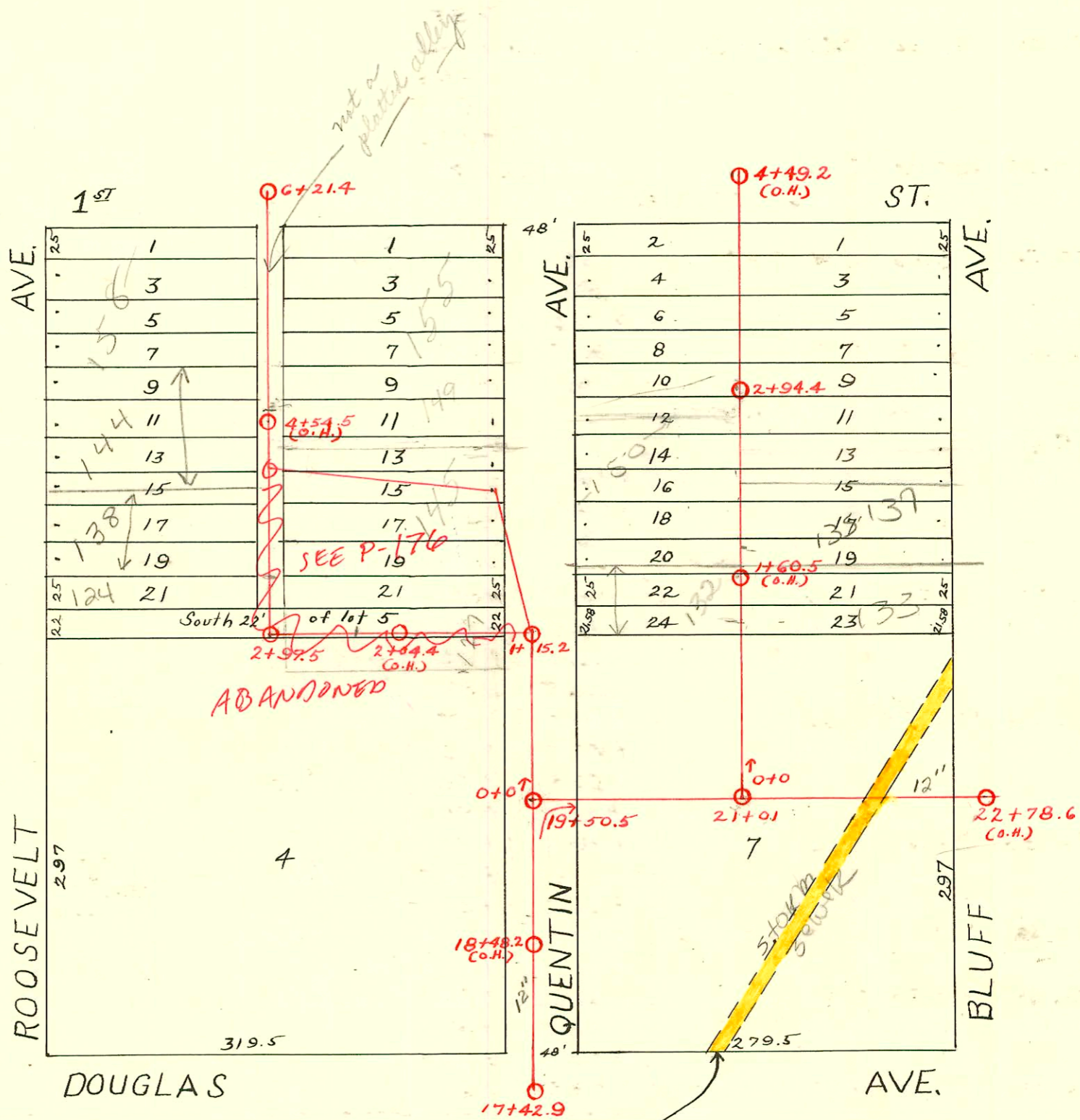


DIST. A - S.S. # 12
1912



Easement #754 - Nov. 13-1916
John J. Hennessy to City of Wichita. 5' each side of line beginning 170' W. of N. W. Corner Douglas & Bluff on N. line of Douglas to pt. in W. line of Bluff 265' N. of N.W. Cor. Bluff & Dougbs.

- 2001-01736- 124 N Roosevelt (Blessed Sacrament) 7/13/01 → Main rerouted → see P-176 for reconnect info.
- 2001-00135- 1/23/01- ⁵¹⁰144 N Roosevelt - AE Henning - sealed w/concrete 178' s of MH (4+43.4)
- 2001-00136- 1/23/01- ⁵¹⁰138 N Roosevelt - AE Henning - sealed w/concrete (4+14.5)
- 2001-00137- 1/23/01- ⁵¹⁰145-147 N Quentin Ave - AE Henning -
- 2002-00572- 3/4/02- ⁵¹⁰124 N Roosevelt - AE Henning - Sealed in MH w/concrete

CONSTRUCTION RECORD							SERVICE RECORD					
STATION	ELEVATION		Depth	MANHOLE	4-INCH "Y" BRANCHES		No. of Permit		House Number		DATE OF PERMITS	
	Ground	Grade			North West	South East	North West	South East	North West	South East	North West	South East
17	168.36	151.85	16.51	17+42.9	17+82							
18	165.46	152.43	13.03		18+07 +31.5 +56.5 +81.5							
19	161.86	153.43	8.43	19+06.5 19+50.5	19+06.5 +31.5 19+72 +94.5		#882-Cathedral School * #2313 Blessed Sacrament Chapel				10-18-27 5-14-40	
20	162.66	154.43	8.23		20+19 +44.5 +69.5 +95							
21	164.56	155.43	9.13	21+01	21+19.5 +44.5 +69.5 +94.5							
22	160.36	156.43	3.93	22+78.6(O.W.)	22+20							
<hr/>												
0	160.54	155.13	5.41	0+0	0+06 +31.5 +57.5 +82.5 1+08		#157					3-16-11
1	172.14	157.63	14.51		1+15.2							
2	165.44	159.38	6.06		2+00 2+24 2+49.5 2+75							
3	172.74	161.06	11.68		2+97.5 3+18.5 +41.5 +66.5 +91.5	3+16 +39 3+64 +89	#1143	#198			8-12-19	3-24-11
4	169.24	162.58	6.66		4+17.5 +42.5 +67.5 +93	4+15 +40 4+65 +90.5	#1360 #1003	#13579 #1003	145 N. Quentin 144 N. Sp. Quentin 149 N. Quentin		4-10-69 11-8-19	1-20-2000 6-17-19
5	170.94	164.18	6.76		5+18 +44 5+69.5	5+15.5 +41.5 5+67	#88 #110		155 N. Quentin 158 N. Roosevelt		2-12-27 2-24-25	
6	174.43	165.78	8.65	6+21.4								
<hr/>												
0	163.38	155.38	8.00		0+28 +53.5 +79	0+25.5 +51 +76.5						
1	170.48	158.38	12.10		1+03.5 1+29 +54 +79	1+01 1+26.5 1+51.5 1+76.5	#372	#162			5-13-20	3-8-20
2	173.41	161.38	12.03		2+04 2+29 2+54.5 2+94.4	2+01.5 2+26.5 2+52 2+74.5	#230 #127	#1457	136 N. Quentin 150 N. Quentin		3-23-26 2-27-25	10-31-22 4-1-20 4-1-20
3	175.81	164.38	11.43		3+03.5 +28.5 +53.5 +79	3+01 +26 +51 3+76.5	#1615 #657	#102	152 N. Quentin 151 N. Bluff		11-5-23 11-26-18	3-25-37 6-14-23
4	177.81	167.26	10.55	4+49.2(O.W.)	4+04.5	4+02	#899					

*Removed 4" & Set C" wye

Tap - 3924 E. Douglas
 Tap - Cathedral - #882 - Clark & Smith - 10-18-27
 s/o Tap - 127 N. Quentin - #1212 - 11-15-28 - Burgan P/bg Co. 212121 AE Henning - sealed w/ concrete 61' E of MH - North wye (2+36.5)
 #93-20783.7 - 132 N. Quentin - s/o - s/b w/ concrete 130 ft North of manhole (1+30.0) - 4" Claytile - Sealed 3 ft off of main
 #93-27046-0701 - 132 N. Quentin - N/C - 148 ft N of manhole (1+48.0)
 4" S&H 40 PVC - tied to top w/ donut gas cot - new tap