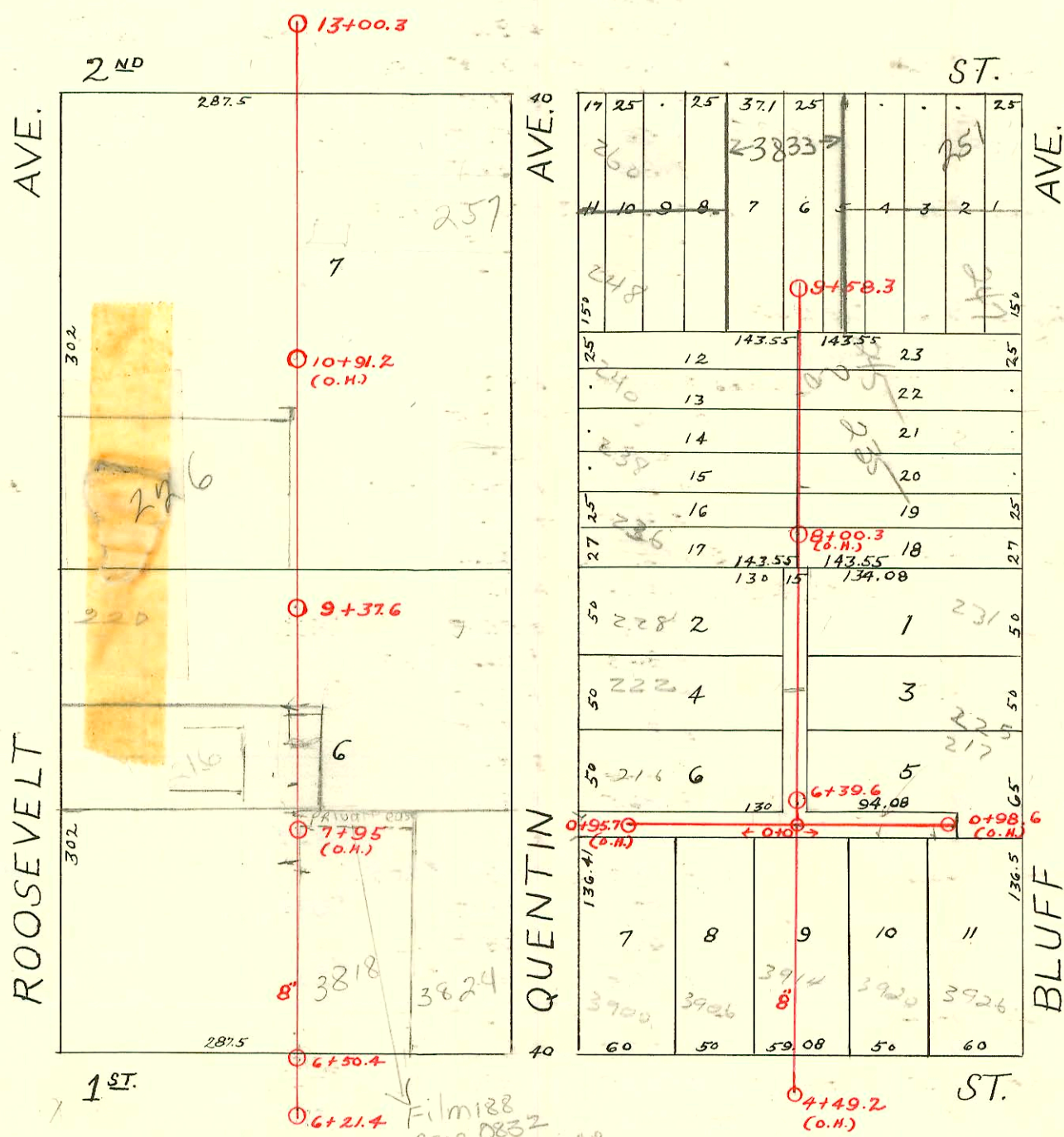


DIST. A - S.S. No. 12  
1912



N. 1/4 S. Line - Lat. 3 - Dist. A - S.S. #12  
1916

1=100

Film 128  
page 0832  
N 10' as per plat  
to 3824 E 1st  
page 219191

2006-01172, 5/17/06 - 226 N Roosevelt, Tied to PVC that is 88' of main, 4" sch 40 PVC, (2) 22V PESSOR 17 - Wichita Excavation

CONSTRUCTION RECORD						SERVICE RECORD						
STATION	ELEVATION		Depth	MANHOLE	4-INCH "Y" BRANCHES		No. of Permit		House Number		DATE OF PERMITS	
	Ground	Grade			North West	South East	North West	South East	North West	South East	North West	South East
6	174.43	165.78	8.65	6+21.4								
				6+50.4	6+92.5	6+90						
7	177.47	167.26	10.21		7+17.5	7+15	#556		200 N. Roosevelt		12-30-36	
					+42.5	+40	#635				7-15-11	
					+75.5	+73	#130				3-9-11	
8	194.45?	168.11	11.24		8+05.5	8+03	C14237		204 N. Roosevelt		6-4-69	
					+26	+23.5						
					+51	+48.5						
					+74	+71.5						
					+99	+96.5						
9	179.05	168.96	10.09		9+24.5	9+22	#992	#46	226 R Roosevelt	see below	6-5-01	
					+59.5	+57		#47			3-30-17	
				9+37.6	+84.5	+82						
10	179.35	169.81	9.54		10+10	10+07.5		#79				
					+36.5	+34						
						+39		#1417				12-18-19
					+59.5	+57						
					+84.5	+82		#2196		237 N. Quantin		7-1-42
11	182.35	170.66	11.69		11+09	11+06.5	#158					3-16-11
					+34	+31.5	#508					6-3-11
					+59	+56.5		#874	231 N. Quantin			10-12-26
					+84	+81.5		#315				5-27-18
12	183.71	171.51	12.06		12+09	12+06.5	#168					3-18-11
					+25	+22.5						
					+55.5	+53		#581				9-25-18
13	182.11	172.36	8.61	13+00.3								
4	177.81	176.26	10.55	4+49.2(0.1)	4+85.5	4+83						
5	179.75	170.11	9.64		5+10	5+07.5						
					+35.5	+33						
					+61	+58.5	#503					11-20-16
					+86.5	+84						
6	182.45	172.96	9.49		6+12	6+09.5						
				6+39.6	+34.5	+32						
					+59	+56.5		#924	317 Bluff			1-2-18
					+84.5	+82	#157					3-29-17
7	182.55	174.23	8.32		7+10	7+07.5		#316				5-18-17
					+35	+32.5	#109					3-19-18
					+60.5	+58						
					+86.5	+83						
						+92.3		#922				12-31-17
8	182.05	174.43	7.62		8+10.5	8+08	#15		235 N Bluff			1-18-18
					+37	+33.5	#614					5-8-96
					+61	+58.5	#16					10-18-18
					+94.5	+92	#15	#229				1-13-20
9	182.35	174.63	7.72		9+19	9+16.5						5-18-12
					+28.3	+39.5	#586					7-26-20
	181.75	174.75	7.00	9+58.3	+50.5	+53		#732				8-23-11
0	180.78	173.56	7.22	0+0		0+07						
						+32.5						
					0+61	+51	#361	#360				9-8-16
						+86.6		#266				5-5-17
	177.52	173.75	3.77	0+98.6(0.1)		+93.5		#362				9-8-16
0	180.78	173.56	7.22	0+0		0+07						
					0+43.5	+30.7	#359	#358				9-8-16
						+79		#357				9-8-16
	181.45	173.75	7.70	0+95.7(0.1)		+94.3						

2003-00644-3/14/03-216 N Roosevelt - Padgett Ex - Reconnect 81' sof MH 9+37.6(8+56.6) Predco by city - 1145, 3422, 1701W CO

2001-01370-6/5/01-226 Roosevelt - Wichita Exc. 4" sch 40 City Repair 4" Predco 95' N of MH 9+37.6(8+42.6) 1145 Replaced last 8' on low end (Insituform NOT cut out) (see next page)

96- 5-8-96 235 S Bluff - Padgett

C105-204716 Roosevelt - Swimming Pool - 6-4-69 - at stemming - top 7+59.4

#2726 Tap - 3818 E 1st - 2-23-46 - C.R. Alexander

#1700 Tap - 3926 E 1st - 9-17-49 - Harley Riggs

#54426 Tap - 226 N Roosevelt - at stemming - 10-26-65 - top

#91-29034-1 8/6/91 3824 E 1st Street - Arrowhead - N/C - (8+03.4 tap 4" sch 40 PVC)

#91-29548-7 8/12/91 3824 E 1st Street - Arrowhead - N/C - (6+50.4 tap 4" sch 40 PVC)