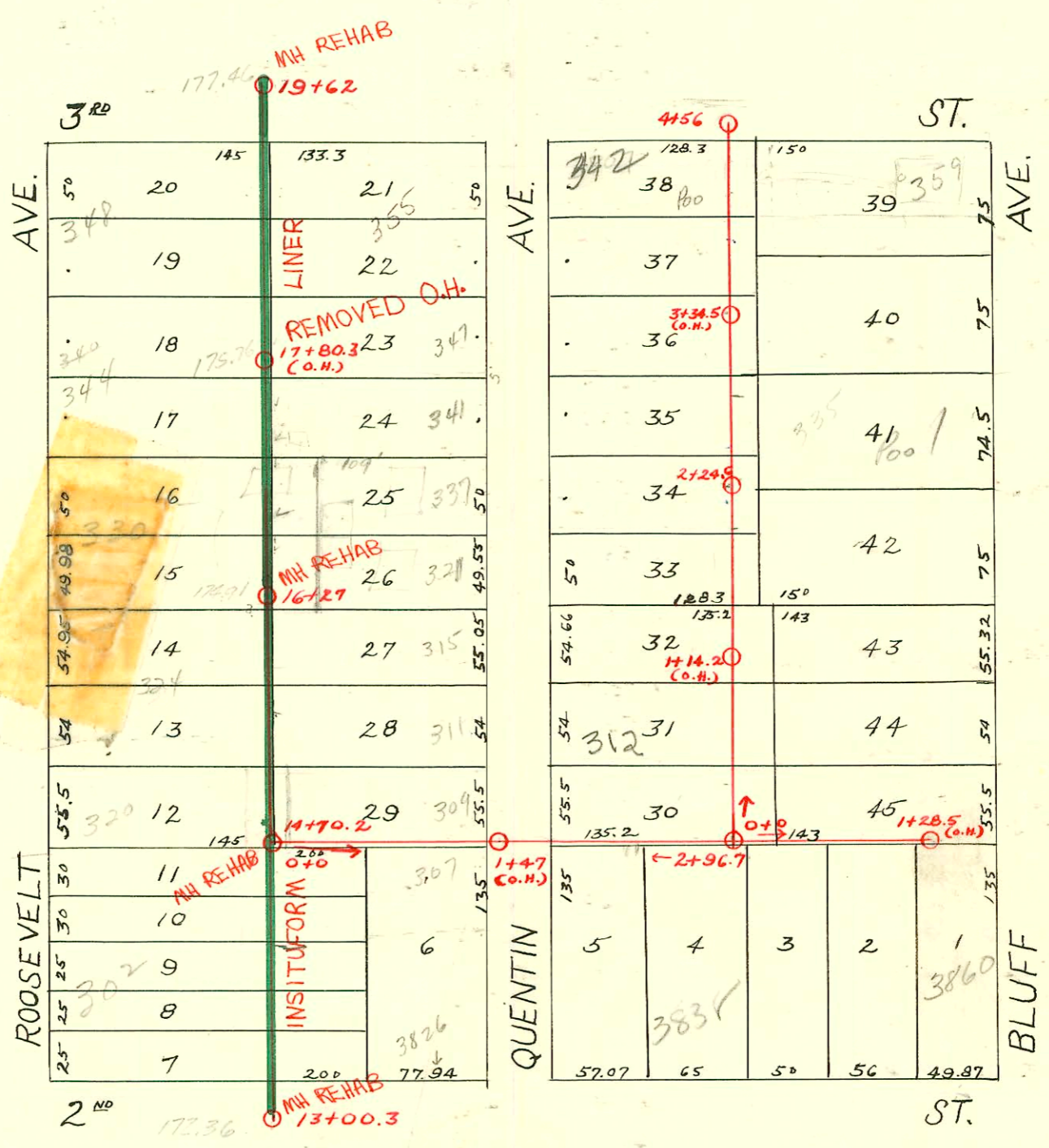


DIST. A - S. S. No. 12
1912

315 N Quentin
MH 16127 approx
2 to 3 5-9 NPL
and approx 3000
R of WPL
according to
Harrowing
He located MH
on his lot



RECONNECTIONS

STATION	ADDRESS	DIRECTION
18+78.2	348 Roosevelt	West
18+48.6	355 Quentin	East
18+04.2	344 Roosevelt	West
17+87.7	347 Quentin	East
17+32.3	337 Quentin	East
16+74.1	330 Roosevelt	West
16+59.1	321 Quentin	East
16+17.4	324 Roosevelt + Apt.	West
15+79.4	315 Quentin	East
15+54.8	311 Quentin	East
14+98.7	320 Roosevelt	West
14+38.8	No Address	East
14+09.4	3826 E. 2ND R	East
13+95.3	200 Roosevelt	West
13+89.7	302 Roosevelt	West
17+68	341 Quentin	East

1992 SANITARY SEWER REHABILITATION
PROGRAM - PHASE I
PROJ. NO. 468-82220 (631879)
BUILT BY INSITUFORM PLAINS, INC.
BOOKED 3-17-93 FROM AS BUILTS

6/15/99 - McClung -

CK Cont - 1-4" WYE, 3V45, 2H45, 1V22, 1H22, 2twines tied in outside back door of house, side door of garage - 309 Quentin

99

2002-02841

CONSTRUCTION RECORD							SERVICE RECORD					
STATION	ELEVATION		Depth	MANHOLE	4-INCH "Y" BRANCHES		No. of Permit		House Number		DATE OF PERMITS	
	Ground	Grade			North West	South East	North West	South East	North West	South East	North West	South East
13	182.11	172.36	8.61	13+00.3	13+39 +64 +90	13+36.5 +61.5 +87.5	#560	#707	302 N. Roosevelt	7-9-20	8-23-27	
14	183.61	173.21	9.26	14+05 14+70.2	14+05 +40.5 +78.5	14+02.5 +38 +76	#461	#557 #2567	3826 E. 2nd 357 N. Quentin	5-23-11	7-1-27 11-20-24	
15	183.61	174.06	8.41	15+04.5	15+02 +29.5 +55 +80.5	15+02 +27 +52.5 +78	#829	#947		4-11-19	6-26-23	
16	184.17	174.91	9.26	16+06 16+27	16+06 +36 +61.5 +87	16+03.5 +33.5 +59 +84.5	#849 #432 #850		323 Bart 333 N. Quentin 327 Bart		4-17-19 5-24-26 4-17-19	
17	184.87	175.76	9.11	17+12.5	17+10 +38 +63.5 +86	17+10 +35.5 +61 +83.5	#344 #1729 #553		337 N. Quentin 341 N. Quentin 347 Bart		4-25-68 4-28-26 7-28-24 7-7-20	
18	185.57	176.61	8.96	18+14	18+11.5 +39.5 +65 +90.5	18+11.5 +37.5 +62.5 +88	#565		340 N. Bluff	7-6-27	7-28-83	
19	187.07	177.46	9.61	19+15.5 19+62	19+13							
0	183.33	173.80	9.53	0+0	0+18 +30.5 +53.5 +79	0+13.5 +28 +51 +76.5	#397	#161	309 Quentin	5-11-21	3-16-11	
1	183.23	174.20	9.03	1+09.5	1+07 +30.5 +53 +81.5	1+07 +28 +50.5 +76.5 +79	#151		3830 E 2nd		3-14-11	
2	183.83	174.60	9.23	2+05 2+28.5	2+02.5 +30.5 +58 +81	2+28 +28 +55.5 +78.5	#595	#552	3838 E 2nd	5-15-91 10-8-78	9-17-14	
0	184.63	175.00	9.63	0+0	0+09.5 +29.5 +55.0 +80.5	0+07.0 +27 +52.5 +78.0	#558	#427 #288		9-9-18	8-23-15 5-17-18	
1	185.73 186.03	177.50 178.25	8.23 7.73	1+28.5 (104)	1+06.0 +26.5	1+03.5 +24.0	#787		3860 E 2nd		9-26-11	
0	184.63	175.00	9.63	0+0	0+19.5 +44.5 +69.5 +94.5	0+17 +42 +67 +92	#1156	#847	312 Quentin	8-16-19	11-17-20	
1	185.23	177.50	7.73	1+20	1+17.5 +45 +73.5 +99	1+17.5 +42.5 +71 +97	#750 #711	#564 #138	315 Bluff	2-21-19 8-11-21	9-11-18 3-20-13	
2	186.13	179.50	6.63	2+24.6	2+21.5 +46.5 +72 +97	2+19 +44 +80	#980	#43 #750	337 Bluff 324 N. Quentin	5-1-24	1-10-23 9-1-11	
3	186.63	180.45	6.18	3+22.5	3+20 +48 +73 +98	3+20 +45.5 +70.5 +95.5	#826	#5727 #665 #978	336 Quentin 338 N. Quentin 3507 E. 2nd 344 Quentin	4-9-19	8-31-51 6-14-22 6-2-23	
4	187.03 187.53	181.05 181.38	5.98 6.15	4+23.5 4+56	4+21 +47	4+21 +44.5						

top #910 1/2 - 5-14-19 (302 Bart)
 top #C1019 - 337 N. Quentin - 4-25-68 J.C. Lewis (17+24.4)