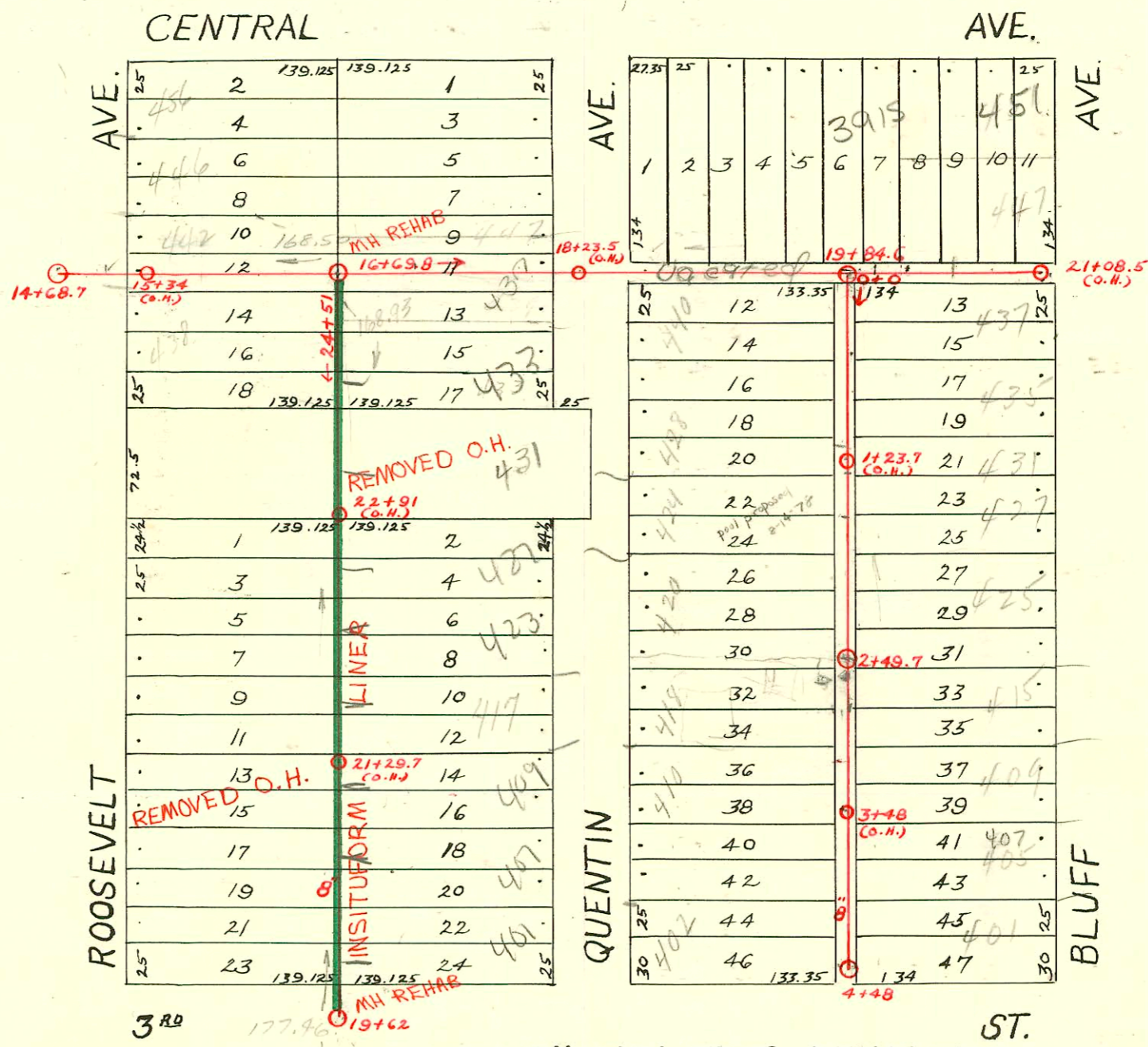


DIST. A - S.S. No. 12  
1912



ST.  
1992 SANITARY SEWER REHABILITATION  
PROGRAM - PHASE I  
PROJ. NO. 468-82220 (631879)  
BUILT BY INSITUFORM PLAINS, INC.  
BOOKED 3-17-93 FROM AS BUILTS

SCALE 1" = 100'

RECONNECTIONS

STATION	ADDRESS	DIRECTION
23+98	438 Roosevelt	WEST
23+78.1	431 Quentin R	EAST
23+35.1	418 Roosevelt	WEST
23+20	427 Quentin	EAST
22+58	423 Quentin	EAST
22+44.6	416 Roosevelt	WEST
22+14.6	423 Quentin	EAST
21+75.1	410 Roosevelt	WEST
21+69.6	417 Quentin	EAST
21+17	409 Quentin	EAST
20+70.4	407 Quentin	EAST
20+48.3	402 Roosevelt	WEST
19+99.4	401 Quentin	EAST

2003-00230-112102a-407 N Bluff -  
Pipe burst + Repl - 4" PE SDR17 - 81' developed  
length - 49.6' N of MH 4148 (3+78.4) 1V45  
1/12/04 - 2004-00089 - 1112104 - Apex Plbg - 4" 40' PE  
2 dir co, 1V45, bsmt, city wye repair 4" Predco,  
119' S of MH 24457 (23+32)

CONSTRUCTION RECORD							SERVICE RECORD					
STATION	ELEVATION		Depth	MANHOLE	4-INCH "Y" BRANCHES		No. of Permit		House Number		DATE OF PERMITS	
	Ground	Grade			North West	South East	North West	South East	North West	South East	North West	South East
19				19+62								
20	186.96	177.41	9.55		20+06.5	20+04	#52		401 N. Quentin			1-29-20
					+29	+26.5			404 N. Roosevelt			5-12-25
					+54	+51.5	#503		407 N. Quentin			1-30-22
					+79.5	+77	#57					
						+99.5						
21	187.26	175.56	11.70		21+02	21+26.5	#199		409 N. Quentin			3-20-22
					+54.5	+52						
					+80	+77.5	#295		420 N. Roosevelt			4-4-29
22	187.06	173.71	13.35		22+06.5	22+04	#694		417 N. Quentin			5-8-23
					+31.5	+29						
					+57.5	+55	#160		416 N. Roosevelt			5-19-36
					+82.5	+80						
23	183.96	171.85	12.11		23+08	23+05.5	#172		427 N. Quentin			3-7-25
					+46.5	+31.5	#77	#285	431 N. Quentin			3-25-12
					+59	+56.5						4-11-30
					+85.5	+83	#1030		433 N. Quentin			5-6-24
24	180.86	170.00	10.86		24+10.5	24+08	#525		422 N. Roosevelt			8-28-18
					+36.5	+34	#983	#82	437 N. Quentin			8-11-22
	179.26	168.93	10.33	24+51					437 N. Quentin			8-2-99
												2-8-22
14	179.87	168.16	11.71	14+68.7								
15	179.27	168.23	11.04		15+24.5							
					+50							
					+74.5							
16	179.57	168.40	11.17		16+00							
					+04							
					+25.5							
	179.57	168.50	11.07	16+69.8	+50.5							
					+77							
17	178.57	169.10	9.47		17+02							
					+26.5							
					+51.5							
					+76							
18	181.27	171.10	10.17		18+01.5		#1296					10-5-22
					+27							
					18+51.5		#171		3903 E. R. Central			3-26-14
					+76.5							
19	183.47	173.10	10.37		19+02		#1572					10-25-23
					+27							
					+51.5							
					+76.5		#637		3915 E. Central			7-27-27
20	183.58	175.10	8.48	19+84.6	20+03.5		#1745		455 N. Bluff			12-22-22
					20+29		#596		455 N. Bluff			9-29-87
					20+53.5				455 N. Bluff			6-7-22
					+79							
21	184.18	177.10	7.08	21+08.5 (O.H.)	21+07							
0	183.04	174.86	8.18	0+0	0+11	0+13.5	#2460	#272	440 N. Fountain	437 N. Bluff		11-1-24
					+36.5	+39						2-23-24
					+60.5	+63	#1314			435 N. Bluff		9-6-23
					+87	+89.5	#718		438 N. Quentin	431		6-29-25
1	186.24	176.46	9.78		1+11.5	1+14	#507	#1213	439 N. Quentin			4-10-23
					+36.5	+39						9-10-19
					+62	+64.5	#80			427		2-6-20
					1+87.5	+90	#924					10-3-21
2	187.06	178.06	9.00		2+15	2+15.5	#936			425		10-5-21
					+37.5	+40						
					+63	2+65.5	#383	#161	418 N. Bluff	415		4-24-22
					+87.5	+90						7-31-81
3	187.56	179.16	8.40		3+12.5	3+15	#112	#1188	410 N. Quentin	409		2-17-20
					+39	+41.5						8-9-23
					+63.5	+66						
					+88.5	+91	#416		405-07 R. Bluff			1-27-03
4	187.66	179.76	7.90		4+13.5	4+16	#1381	#1809	401 N. Bluff			11-18-19
	187.36	180.06	7.30		4+39	+41.5						12-10-23

c 1199-435 N Bluff - al Henning - 12-13-66 - Top (0+67.6)  
 B5058-442 N. Roosevelt - Henry Henning - 2-8-66 - Top (15+85.3)  
 c 67629-424 N. Quentin - Ann Coleman - 7-31-78 - Top (1+32.4)