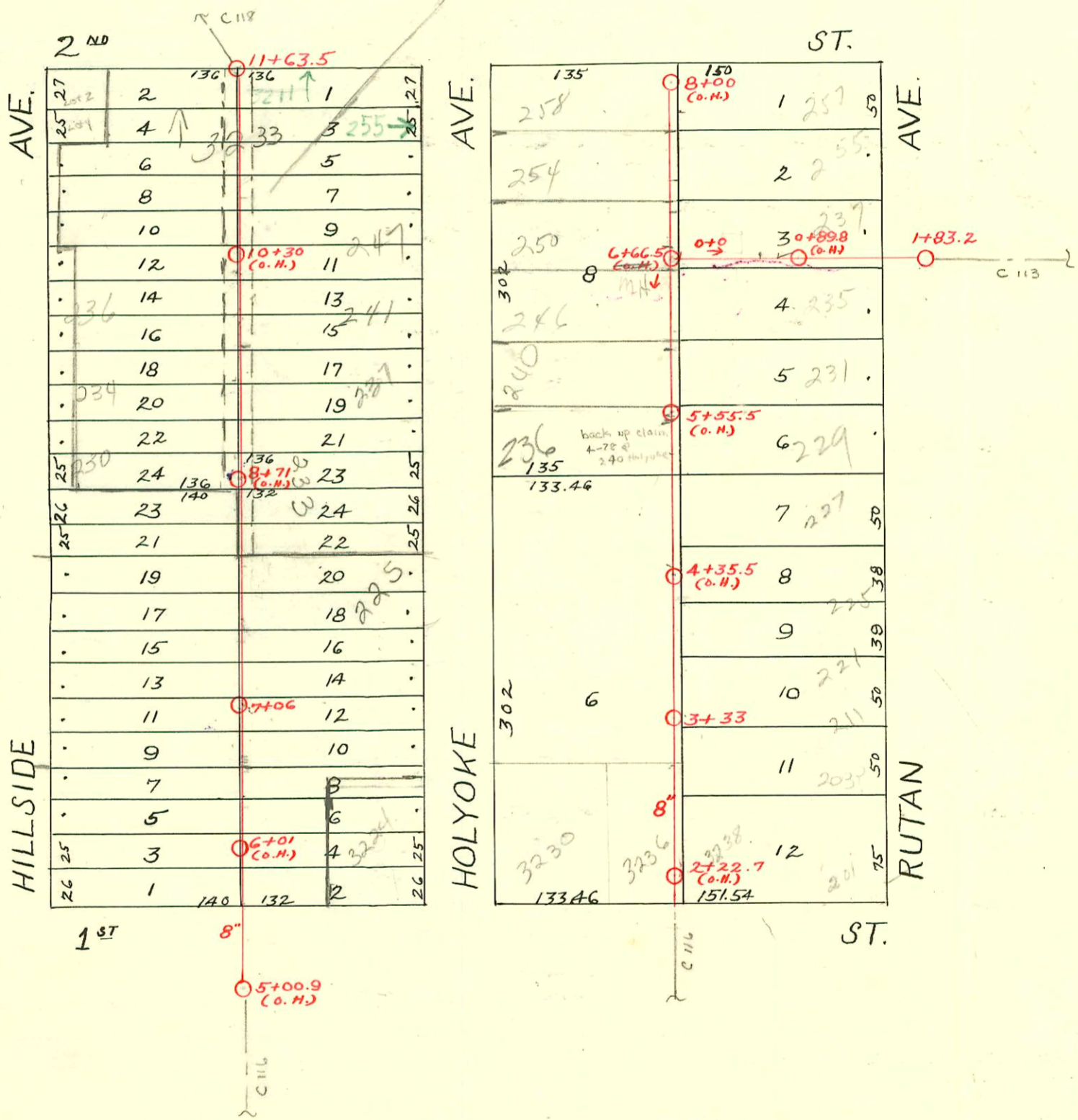


DIST. B-S.S. No. 12  
1911

HCA Wesley  
Add  
10-51



2003-00515-22603-257 N Rutan- Padgett Ex- City wye repair (on main) run under garage  
4"40PK 2V22, 12' from main

CONSTRUCTION RECORD

SERVICE RECORD

STATION	ELEVATION		Depth	MANHOLE	4-INCH "Y" BRANCHES		No. of Permit		House Number		DATE OF PERMITS				
	Ground	Grade			North West	South East	North West	South East	North West	South East	North West	South East			
5	135.72	125.75	9.97	5+00.9(0.H.)	5+72	5+69.5									
6	137.55	126.30	11.25		5+97.5	5+95	#339					5-28-17			
					6+25	6+22.5	#339	#792			5-28-17	7-6-22			
7	137.15	126.25	10.90	7+06	6+60	6+47.5	#855	#457	3224 E. Holyoke			4-21-19	10-7-12		
						6+73.5									
						6+98									
					7+00.5	7+18.5	7+33.5	2320 #691	212 Hillside		1-8-81	8-5-21			
8	136.84	127.40	9.44		7+63	7+60.5	#278					4-8-11			
					7+89.5	7+87									
					8+27.5	8+12	#797	#40	2225 N. Hillside	325 N. Holyoke	1-26-84	9-28-11	1-29-13		
9	136.24	127.95	8.29		8+34.5	8+32	#895					5-9-19			
					8+64.5	8+62	#353	#130	230 N. Hillside	335 N. Holyoke	1-3-84	6-24-13	4-13-16		
10	137.04	128.50	8.54		9+15.5	9+13									
					8+43	8+40.5	#652	#329	234 N. Hillside	327 N. Holyoke	1-3-84	5-1-23	7-10-84		
					9+65.5	9+63	#283	#431	236 N. Hillside	330 N. Holyoke	1-8-84	5-15-18	9-23-12		
					9+91.5	9+89		#444					5-13-11		
11	137.44	129.05	8.39		10+16.5	10+14	#7867	#1018	250 N. Hillside	355 N. Holyoke		9-2-58	6-25-19		
					10+41.5	10+39	#67								
					10+67	10+64.5	#965								
					10+96.7	10+88.5	#12728	#12729	327 N. Hillside	353 N. Holyoke	12-11-84	6-2-19	12-11-84	12-11-84	
11	137.84	129.38	8.46	11+63.5	11+15	11+12.5	#373	#207	255 N. Hillside	355 N. Holyoke		6-26-18	5-17-12		
					11+39	11+36.5									
2	142.35	133.89	8.46	2+22.7(0.H.)	2+21.5	2+18									
					2+37	2+34.5	#927	#356	3236 E. Hillside	326 E. Hillside	5-20-19	4-20-11			
					2+71.5	2+69	#863				11-8-11				
3	142.55	134.99	7.56	3+33	2+97	2+94.5	#1167	#611	201 N. Hillside	320 N. Holyoke		8-20-19	7-15-21		
					3+22	3+19.5		#757							
					3+47.5	3+45	#23207	#274	210 N. Hillside	311 N. Holyoke	8-27-92				
					3+73	3+70.5	#212	#275	211 N. Hillside	311 N. Holyoke	4-17-17	4-8-11			
4	142.69	136.09	6.60		3+98.5	3+96									
					4+18.5	4+16		#276	215 N. Hillside	315 N. Holyoke		4-8-11			
					4+28.5	4+26									
					4+46	4+43	#205				4-16-17				
5	146.19	137.19	9.00		4+74	4+71.5	#752					2-24-19			
					4+99.5										
					5+02	5+25	#881								
					5+27.5	5+25		#88	229 N. Hillside	329 N. Holyoke	5-5-19	9-15-87			
6	147.59	138.29	9.30		5+51	5+48.5	#88	#277	231 N. Hillside	331 N. Holyoke		2-9-20	4-8-11		
					5+76	5+73.5		#674							
					5+99	5+99									
					6+01.5	6+16.5	#789247	#89	240 N. Hillside	340 N. Holyoke	10-31-47	2-9-20			
6	148.88	139.01	9.87	6+66.5	6+19	6+16.5		#350					4-19-11		
					6+51.5	6+49									
					6+75.5	6+73	#492		250 N. Hillside	350 N. Holyoke	8-12-18				
7	149.28	139.39	9.89		6+98.5										
					7+01	7+24.5	#473	#549	251 N. Hillside	351 N. Holyoke	8-2-18	9-4-18			
					7+49.5	7+47									
					7+75	7+72.5	#389	#473	254 N. Hillside	354 N. Holyoke	7-2-18	7-26-03			
8	160.38	140.49	9.89	8+00(0.H.)	7+95.5	7+93						7-9-17			
0	149.09	139.01	10.08	0+00	0+67.5	0+65	#634		257 N. Hillside			7-17-11			
					0+89.8(0.H.)										

99

11420 - 235 N Holyoke - Ken Laddack 7-10-84 - 11463.5 S (8+87.5)

11423 - 247 N Holyoke - Ken Laddack - 7-10-84 - 11463.5 S (9+89.0)

#108 - Tap - 2-17-20 - 3201 E. 2nd St. - Conn to private line  
 #40 - Tap - 5-29-34 - 226 N. Holyoke - C.C. Bryant  
 #1927 - Tap - 10-28-39 - 201 N. Rutan - M.L. Lansdowne

#01510 5/0 212 N. Hillside Hemming 7/14/06 10-15-80 (5/0 7' N of S Prop. Line)  
 #01511 5/0 214 N. Hillside Hemming 7/14/06 10-15-80 (5/0 63' N of S. Prop. line of 212)  
 92-3129-7 9-22-92 3233 E 2nd use 73' S of MH (10+90.5)