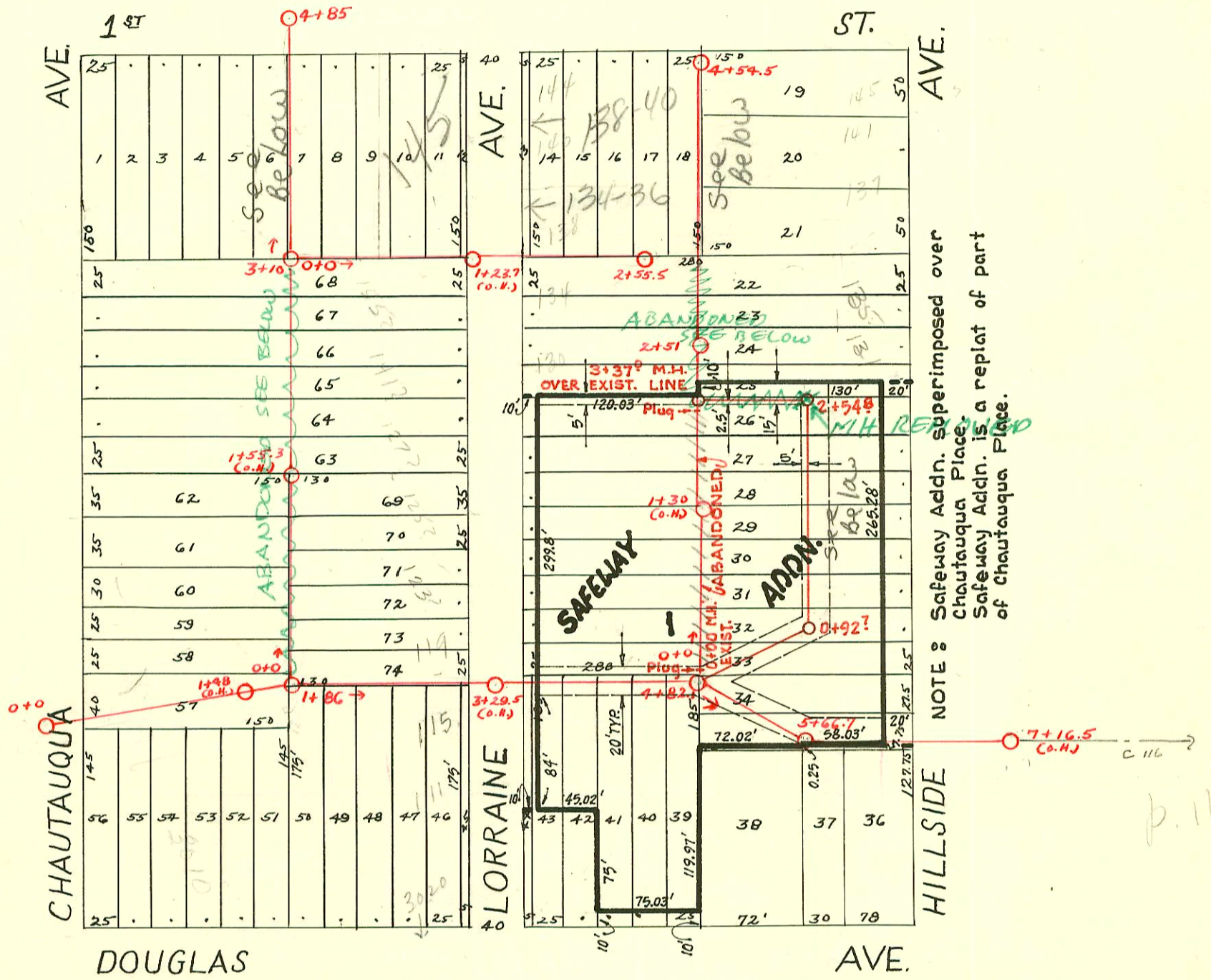
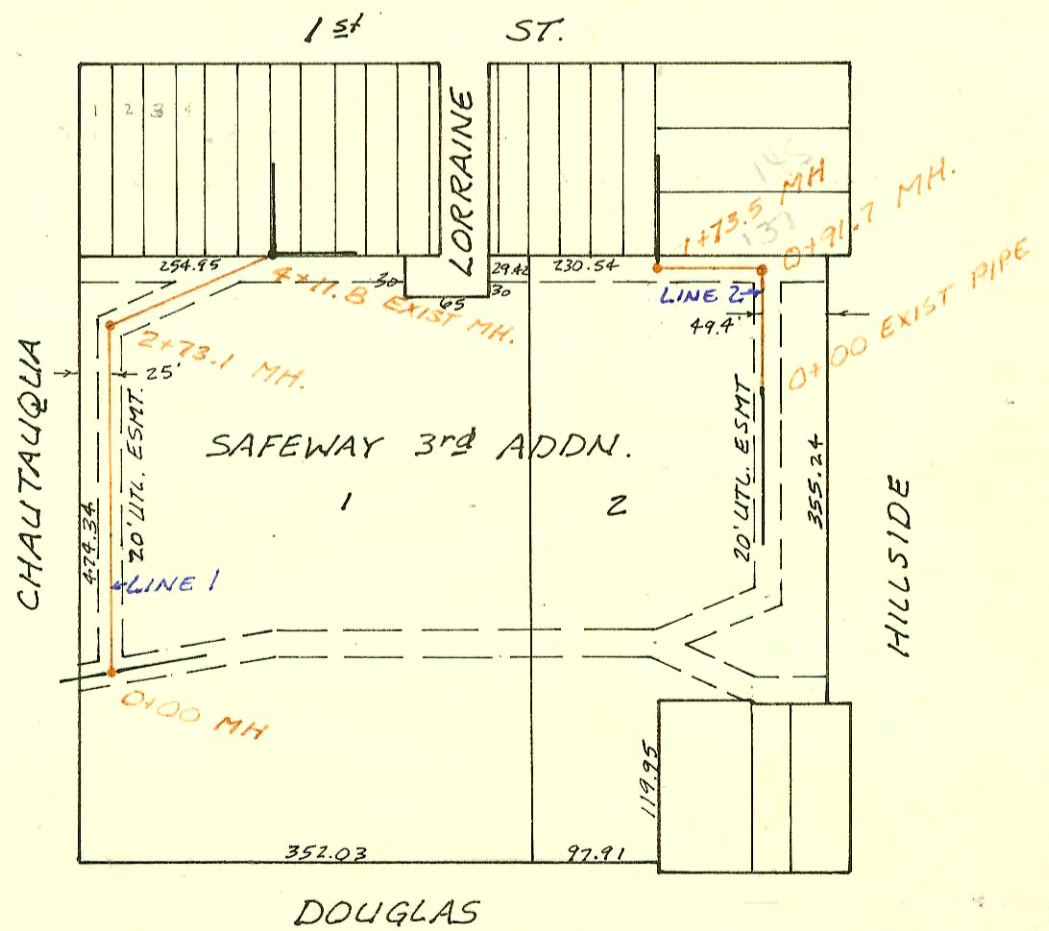
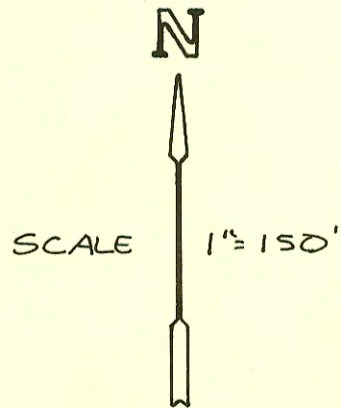


DIST. B - S.S. No. 12
1911



Relocation of part of District "B", S.S. #12
for the **Safeway Addition**
W. B. Carter Const. Co.
Booked July 13, 1970, from I.H. 7
Private Project

PRIV. S.S. RELOCATION FOR
SAFELWAY 3RD ADDN.
468-76-245-80000-000-000-008
Booked 12-13-84 FROM PLAN



CONSTRUCTION RECORD

SERVICE RECORD

STATION	ELEVATION		Depth	MANHOLE	4-INCH "Y" BRANCHES		No. of Permit		House Number		DATE OF PERMITS		
	Ground	Grade			North West	South East	North West	South East	North West	South East	North West	South East	
0	120.18	111.88	8.30										
1	121.28	113.33	7.95			1 + 11							
						+ 17		# 156		3008 E. Douglas		10-25-32	
					1 + 48(O.H.)	+ 44							
					1 + 86								
2	121.88	114.69	7.19			2 + 00		# 300		3012 E. Douglas		4-12-11	
						2 + 42.0		2056		111 N. Lorraine		12-10-80	
						2 + 63.5		# 400		123 N. Lorraine		12-10-80	
						+ 79.5						6-14-17	
3	122.58	115.94	6.64			3 + 07		# 313		3220 E. Douglas		4-13-11	
						+ 43.5		# 209		3020 E. Douglas		5-9-12	
4	123.88	117.19	6.69			4 + 38		# 273		3042 E. Douglas		3-19-70	
		118.02			4 + 82.1	+ 99.5						5-13-18	
5	126.68	118.44	8.24			5 + 24.5		# 182	# 475	115 N. Hillside	3030 E. Douglas	4-15-18	
					5 + 41.5	+ 39						8-16-12	
		119.27			5 + 66.7	+ 78.5							
						+ 96		# 18410		3126-30-32 E. Douglas	107-109-111 N. Hillside		3-19-70
6	127.58	119.69	7.89										
7						7 + 16.5(O.H.)							
0	123.38	114.66	8.72	0 + 00	0 + 16.5	0 + 14		# 3436					
					+ 41.5	+ 39.5		# 635		119 N. Lorraine		10-10-80	
					+ 68	+ 70.5		# 160	# 82	123 N. Lorraine		10-26-14	
					+ 92.5	+ 90						3-20-16	
1	123.48	115.36	8.12		1 + 18.5	1 + 16		# 360				7-21-15	
					+ 43	+ 40.5		# 611	2060	125 N. Lorraine		12-10-80	
					+ 69.5	+ 66		# 792				9-27-11	
					+ 91	+ 88.5			4019	137 N. Lorraine		8-27-81	
2	123.68	116.06	7.62		2 + 17	2 + 14.5		# 481		141 N. Lorraine		11-10-16	
					+ 52.5	+ 40		# 146	# 237	145 N. Lorraine		4-16-12	
					+ 67.5	+ 65		# 185		155 N. Lorraine		4-24-17	
					+ 93.5	+ 91		# 276		147 N. Lorraine		4-22-15	
3	124.48	116.83	7.65	3 + 10	3 + 16			# 1250				7-6-16	
					+ 41			# 557		152 N. Chautauqua		9-26-22	
					+ 66							6-28-26	
					+ 91								
4	124.88	117.46	7.42		4 + 16.5			# 2				1-2-22	
					+ 39.5								
					4 + 85								
0	127.04	118.41	8.63		0 + 29.5	0 + 27							
					+ 52.5			# 18713		117 N. Hillside		4-8-70	
						+ 70		# 268		121 N. Hillside		4-6-11	
					+ 91.5	+ 89		# 505	# 229	124 N. Lorraine		4-8-70	
1	128.64	118.96	9.68		1 + 26	1 + 23.5		# 461		125 N. Hillside		4-23-17	
					+ 52.5	+ 50		# 230		132 N. Lorraine		4-8-70	
					+ 78	+ 75.5		# 171		138 N. Lorraine		4-23-17	
2	129.44	119.51	9.93		2 + 04	2 + 01.5		# 34		133 N. Hillside		2-13-17	
					+ 29.5	+ 27		# 938				1-21-14	
					2 + 51	2 + 66.5	2 + 64	4023	4025	134 N. Hillside		7-26-29	
					+ 91.5	+ 89		# 1049		135 N. Hillside		8-27-81	
3	128.44	120.06	8.38		3 + 13.5	3 + 29.5		# 480	# 921	137 N. Hillside		10-31-21	
					+ 71.5	+ 69		# 72	# 69	144 N. Lorraine		8-11-14	
					3 + 98	+ 95.5		# 1072		138-40 Lorraine		2-18-13	
					4 + 24.5	4 + 22		# 175		153 N. Hillside		2-18-13	
4	129.73	120.61	9.12		4 + 54.5	4 + 30.5		5003	9021	140 N. Hillside		10-18-84	
					+ 36.5							8-15-29	
					+ 87							4-23-12	
0	124.34	116.83	7.51	0 + 00	0 + 11.5							1-4-82	
					+ 36.5							1-15-59	
					+ 87								
1	123.74	117.63	6.11		1 + 11								
					+ 34								
	123.24	117.99	5.35	1 + 38.5(O.H.)	+ 34								
0	124.34	116.83	7.51		0 + 14								
					+ 39								
					+ 64			10184		145 N. Lorraine		2-9-84	
					+ 89.5								
1	125.94	118.43	7.51		1 + 14.5			# 394		3027 E. Douglas		6-15-83	
					+ 37			# 628		158 E. Douglas		7-17-13	
					+ 59.5							7-14-11	
					+ 87.5								
2	127.27	120.03	7.24		2 + 13			12479		134 N. Lorraine		11-7-84	
					+ 35.5			12480		136 N. Lorraine		11-7-84	
	127.67	120.93	6.74	2 + 55.5	+ 50.5								

C 19986-3134 E. Douglas - Robert McCarty 7-7-70 - M. N. top 5766.7
 #29-3016 E. Douglas - Used old connection - 4-18-33 - Ray Bryant
 #20 - Top - 3020 E. Douglas - 2-11-35 - Roy Bryant
 #297 - Private line - 3010 E. Douglas - 6-14-37 - Simmons Pibg. (14210)
 #1367 - Used old connection - 142 N. Chautauqua - 3-7-39 - C.M. Wyatt
 #1525 - Top - 111 N. Lorraine - 5-6-44 - Simmons Pibg. Co.
 #6536 - Top - 147 S. Hillside - 10-25-55 - Kendall Pibg. Co.
 C 18412 - 124 N. Lorraine - 3-19-70 - J.C. Lewis 3-19-70 (1+16.6)
 C 18411 - 116 N. Lorraine - 3-19-70 - J.C. Lewis 3-19-70 (4+12.1)
 C 20015 - 3120 E. Douglas - H. Brake - 7-9-70 (4+51.1) - Saffway Store
 C 55654 - 3104 E. Douglas - Al Henning 5-27-76
 #4024 (317 N. Hillside) 8-27-81 Don Douglas (24160) (S.S. 8 M.H.)
 #1022 1307 N. Hillside 8-27-81 Don Douglas (S.S. side of H.G.T.E. line cutting the amount of pipe (1+71.6) M.H. 31005.119)

CONSTRUCTION RECORD						SERVICE RECORD						
STATION	ELEVATION		Depth	MANHOLE	4-INCH "Y" BRANCHES		No. of Permit		House Number		DATE OF PERMITS	
	Ground	Grade			North West	South East	North West	South East	North West	South East	North West	South East
Relocation of part of Dist. 'B', S.S. #12 for the Safeway Addn.												
		118.73		EXIST.								
		118.92 out		0+00								
		119.02 in		0+92?								
2+00		119.23										
		119.35		2+54 ⁸								
3+00		119.54										
		119.60		3+37 ⁹								
PRIV. SAN. SEWER RELOCATION FOR SAFEWAY 3 rd ADDN.												
LINE 1	0+00	121.30	112.66	8.6	0+00							
	1+00	122.2	113.57	8.6								
	2+00	122.8	114.48	8.3		2+37.6		1150		302 ^{0E} DOUGLAS		12-10-82
		123.30	115.14 ^{OUT}	8.0	2+73.1							
	3+00	123.2	115.24 ^{IN}	7.7								
			115.48									
	4+00	124.1	116.39	7.7								
		125.0	116.50	8.5	EXIST. 4+11.8							
LINE 2	0+00	128.9	119.15	9.8								
		129.30	119.46	9.8	0+91.7							
	1+00	129.0	119.56	9.4								
		127.45	119.59	9.4								
			119.83	7.6	1+73.5							