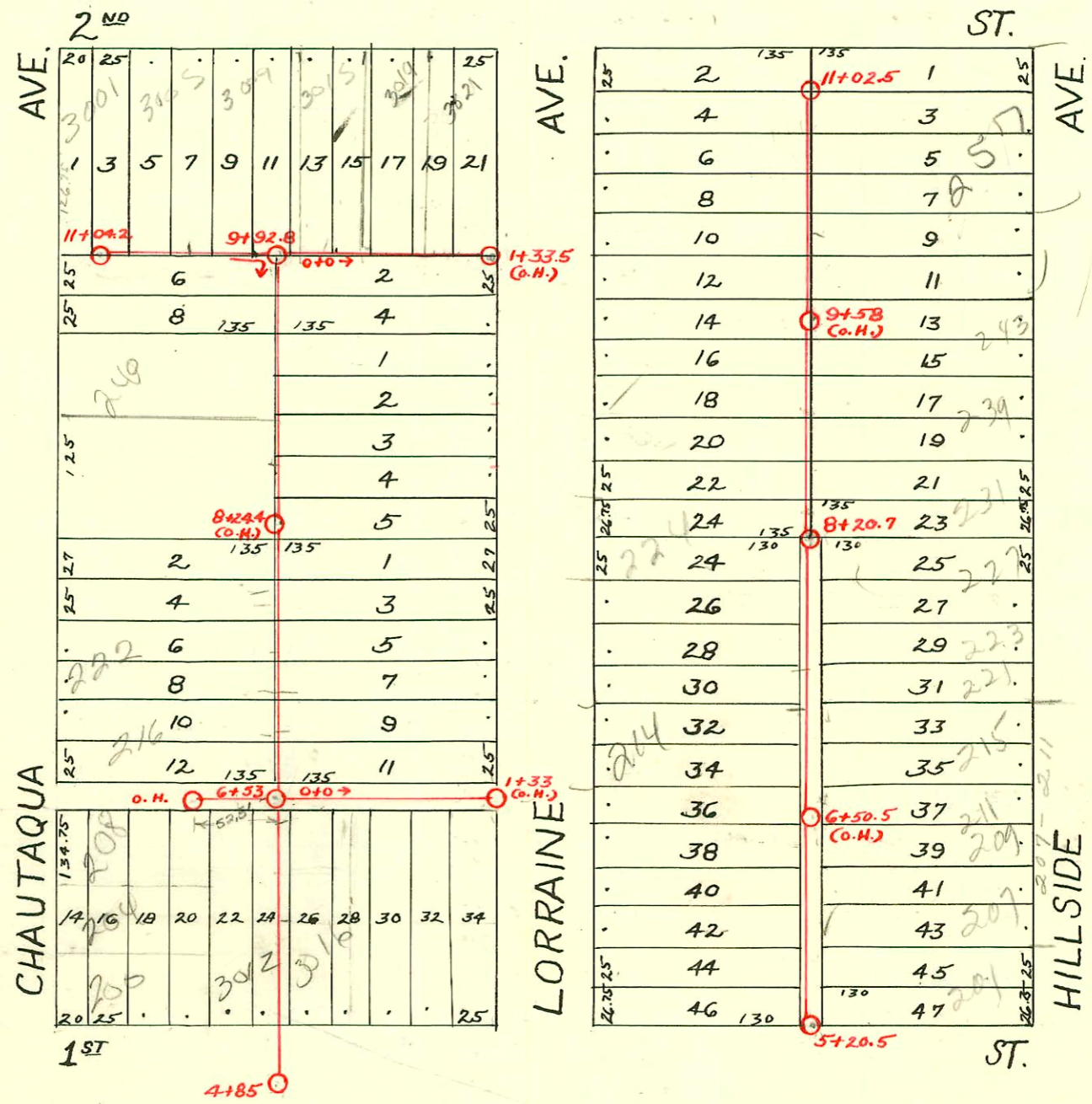


DIST. B - S.S. No. 12  
19 11



9+92.8  
St 68

S/O 2003-02020 - 8/4/03-221 N Hillside - A New Dawn - s/o with concrete 60' s of MH 8+20.7 (7+60.7) 5' from main  
 S/O 2003-02022 - 8/4/03-227 N Hillside - A New Dawn - s/o with concrete 40' s of MH 8+20.7 (7+80.7) 5' from main

CONSTRUCTION RECORD						SERVICE RECORD						
STATION	ELEVATION		Depth	MANHOLE	4-INCH "Y" BRANCHES		No. of Permit		House Number		DATE OF PERMITS	
	Ground	Grade			North West	South East	North West	South East	North West	South East	North West	South East
4	124.88	117.46	7.42	4 + 85								
5	125.88	118.16	7.72		5 + 34.5	5 + 32						
					+ 54.5	+ 52						
					5 + 77.5	5 + 75	#56641	#698	3012 E. 3rd	?	7-12-76	9-20-17
6	126.18	118.86	7.32		6 + 02.5	6 + 00						
					+ 28.5	+ 26						
	126.08	119.23	6.85	6 + 53	6 + 49	+ 46.5	56641		3012 E. 3rd		7-12-76	
					6 + 70	+ 67.5						
					+ 95	+ 92.5						
7	126.38	119.39	6.99		7 + 20.5	7 + 18						
					7 + 45.5	+ 43		#57	221 N. Ferraine			1-30-17
					7 + 71	+ 68.5	#370		223 N. Ferraine		7-29-15	
					+ 96.5	+ 94		#109				3-9-17
8	126.98	119.74	7.24		8 + 21.5	8 + 19						
					+ 45	+ 42.5						
					8 + 68	+ 65.5	#173	#277	?	229 N. Ferraine	5-8-16	5-14-18
					+ 96.5	+ 94						
9	127.58	120.09	7.49		9 + 16	9 + 13.5		#443				7-19-18
					9 + 39	+ 36.5	#622	#277		237 N. Ferraine 239 N. Ferraine	11-17-13	5-10-17
					+ 61	+ 58.5						
	127.88	120.40	7.48	9 + 92.8								
10					10 + 04.5		#93		?			3-22-16
					+ 25							
					10 + 48	10 + 50.5	#346		3005 E. 2nd		8-2-14	6-8-14
					+ 72.5							
					+ 97.5							
11	127.08	121.00	6.08	11 + 04.2								
0	127.88	120.40	7.48	0 + 00	0 + 09		#75		3015 E. 2nd			2-19-17
					+ 31.5							
					+ 55		#616		3017 E. 2nd			8-23-17
					+ 80.5	+ 83						
1					1 + 06		#715		3021 R E. 2nd		3-7-00	9-27-17
	128.48	121.70	6.78	1 + 33.5(O.H)	+ 31							
0	126.08	119.23	6.85	0 + 00		0 + 11.5						
						0 + 37	#699		3020 E 1st			9-20-17
						+ 60						
						+ 85	#496		3026 E 1st			11-17-16
1	126.92	120.23	6.69			1 + 08.5						
	127.52	120.53	6.99	1 + 33(O.H)		+ 31.5						
5	129.33	121.16	8.17	5 + 20.5	5 + 38.5	5 + 36	#140		201 N. Hillside			12-1-34
					+ 64	5 + 61.5	#948		205 N. Hillside			8-27-25
					+ 88.5	+ 86	#994	#447	207 N. Hillside	6-13-19		6-20-24
6	130.33	121.71	8.62		6 + 14	6 + 11.5	#11652		207-11 N. Hillside			11-22-68
					+ 38.5	+ 36	#531					
					+ 64	+ 61.5	#159		209-211 N. Hillside			10-17-65
					+ 89	+ 86.5						4-1-13
7	131.63	122.26	9.37		7 + 15	7 + 12.5	#58	#1246	214 N. R. Ferraine	215-217 N. Hillside	7-24-00	10-17-64
					+ 40.5	+ 38	#408				12-22-15	9-29-19
					+ 65.5	+ 63	#40	#2003-2020	221 E 10 Hillside		see next	8-4-03
					+ 91	+ 88.5	#333	#1238	227 S 10 Hillside		see next pg	1-17-22
8	130.63	122.81	7.82	8 + 20.7	8 + 16	8 + 13.5	#662	#537	224 N. Ferraine			9-24-19
					+ 40.5	+ 38						
					+ 66	+ 63.5						
					+ 91	+ 88.5	#278					12-3-18
9	131.23	123.36	7.87		9 + 15.5	9 + 13	#176					5-14-18
					+ 41	+ 38.5	#1372	#46	243 N. Hillside			4-24-12
					+ 66.5	+ 64						2-28-16
					+ 92	+ 89.5	#1091					
10	130.33	123.91	6.42		10 + 17.5	10 + 15	#267		?			7-22-19
					+ 32	+ 29.5						
					10 + 61.5	+ 59	#195		252 ?			4-6-11
					+ 89.5	+ 87						
11	132.03	124.46	7.57	11 + 02.5								

80 C 5763-11-11-76 #217 N. Hillside  
 #757-Tap- 9-11-11. 204-08-12 N. Chautauque (Shallow) 5-31-90  
 #251-Tap- 5-7-18 (217 N. Ferraine)  
 #6858 - Set wye - (6 on 8) - Day Bros. - 257 N. Hillside - New Fire Station - 11-3-53  
 #15700 - 213 N. Hillside - for building - 9-5-69 (6+45.5)  
 SWP 2001-02650 10/22/04 204 N Chautauque - Reddi Route:  
 SWP 2004-00608 3-7-04 3021 E 2nd - (1) twin (1) 122H, (1) 45H (2) Ferro 4" sch 40 - Reddi 3-7-04