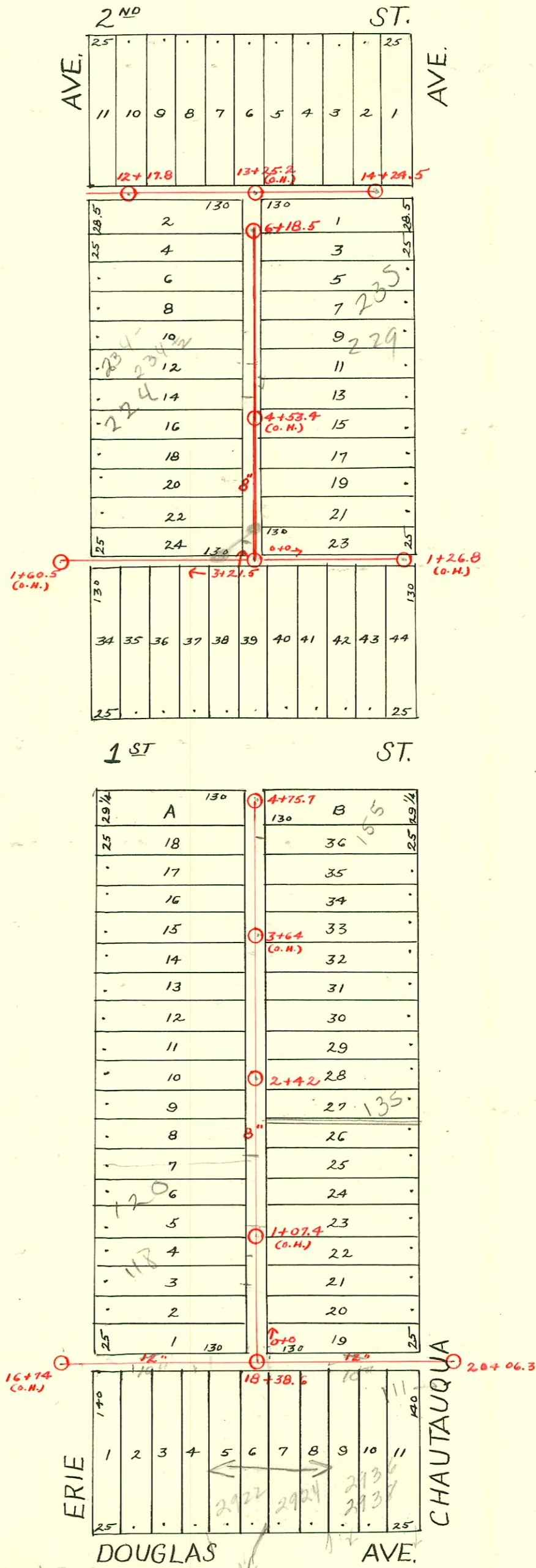


DIST. B - S.S. No. 12
1911



2002-02720 10/2/02 Redde Rootr 120 N Erie
PE-Pulled line - (watched film) 78' Sof
MH 2+42(1+64) 4" Predco, 1045, wye and
45 (opposing clos)

County addresses
as 2922 - SR
changed to 2424

Surf 2005 00391 2/23/05 2936 E Douglas - Misc Const

CONSTRUCTION RECORD						SERVICE RECORD						
STATION	ELEVATION		Depth	MANHOLE	4-INCH "Y" BRANCHES		No. of Permit		House Number		DATE OF PERMITS	
	Ground	Grade			North West	South East	North West	South East	North West	South East	North West	South East
16	118.89	110.44	8.45	16+74(0.1)								
17	119.89	110.84	9.05		17+10							
					+35							10-27-19
					+60							
					+85							
18	120.19	111.24	8.95	18+38.6	18+10.5							4-1-20
					+45							8-7-67
					+70							10-9-16
					+95							9-25-60
					+110							7-10-68
					+125							10-9-16
19	120.69	111.64	9.05		19+00							2-23-05
					+25							2-9-20
					+45.5							7-25-65
												4-12-11
20	120.19	111.84	8.31	20+06.3								
11	123.64	115.46	8.18		11+91.5							
12	124.44	116.46	7.98	12+17.8	12+12							
					+45	12+27	#719	#156	2901 E.		8-25-27	4-18-12
					+70		#261		2907 E.		4-7-20	
					+95		#1289		2917 E.		1-5-39	
13	125.34	117.46	7.88		13+20		#441		2921 E.		4-30-30	
					+42.5		#95		2902		3-4-13	
					+67.5	13+93		#249				5-28-15
14	126.44	118.46	7.98	14+03	14+03							
					+15.5							
1	122.62	114.00	8.62	1+60.5(0.1)								
2	123.52	115.00	8.52		2+05.5		#91		E. 1st.			4-2-12
					+40							
					+64.5		#174		2910			4-23-12
					+89.5		#487		2906			10-22-12
3	123.82	116.00	7.82	3+21.5	3+44	3+41.5	7790		E. 1st.			4-7-83
					+68.5	+66	#922					5-19-19
					+94.5	+92.5	7791	#627				4-7-83
4	124.62	117.00	7.62	4+19	4+16.5		#924					5-19-19
					+41.5	+39						
					+64	+61.5	#923	#512	2911			10-3-79
					+86.5	+85.0	#659	#309	2904			11-9-12
5	125.32	118.00	7.32	5+12	5+09.5				Erie	Chautauque	12-8-13	4-12-11
					+36.5	+34						
					+62.5	+60	#17629	#727	2904			6-5-12
					+87.5	+85						8-22-11
6	125.62	119.00	6.62	6+18.5								
0	124.02	116.25	7.77	0+0	0+21.5							
					+46.5							5-16-12
					+72							5-23-17
					+97.5		#226	#305				3-29-20
1	124.22	117.75	6.47	1+26.8(0.1)	1+22							6-27-12
0	120.22	111.21	9.01	0+15.5	0+13		#250	#283	116 N. ERIE	117 N. Chautauque	5-29-12	4-10-11
					+38	+31						
					+65.5	+63						
					+90.5	+88						
1	121.22	112.11	9.11	1+16	1+13.5		#284		123 N. Chautauque			4-10-11
					+38.5	+36						
					+73	+63	#375	#293	120 R. N. ERIE	127 N. Chautauque	10/2/02	4-24-11
					+88.5	+86	#374	#360	131 N. Chautauque			4-20-11
2	122.02	113.01	9.01	2+14	2+04		#321	#483	124 N. ERIE	135 N. Chautauque	9-12-84	4-24-11
					+36	+33.5			128 N. Erie			7-13-17
					+61	+58.5		#279	133 N. Chautauque			4-14-11
					+86.5	+84	#319	#604	138 N. ERIE			6-14-12
3	122.52	113.91	8.61	3+11.5	3+10				135 N. Chautauque			4-13-11
					+36.5	+34						
					+62	+61	#265	#151	2719 E. Douglas	149 N. Chautauque		4-6-11
					+87	+84.5						4-25-16
4	123.02	114.81	8.21	4+22	4+17		#489	#490	150 E. N. Erie	153 N. Chautauque	2-19-84	5-31-11
					+46.5	+44	#651	#335	157 N. Chautauque			7-21-11
					+69.5	+67						8-22-16

#42 - Tap - 2-21-18
 #278 - Used old connection - 2904 E. 1st - 11-18-35 - Vernon Shefferberger
 #363 - 2900 E. Douglas - Used old connection - 7-20-37 - Brodie Pkg.
 #3361 - Tap - 243 1/2 N. Chautauque - 4-22-41 (Tapped at 13+33.3)
 #1834 - Tap - 200 N. Erie - 12-29-48 - Moore - Robertson Pkg. Co.
 10612 - New line - Temporary connection - 201 N. Chautauque - Joe Mc Donald 6-12-59
 B4294 - Seal off - 215 N. Chautauque - T.M. Bully 10-7-65