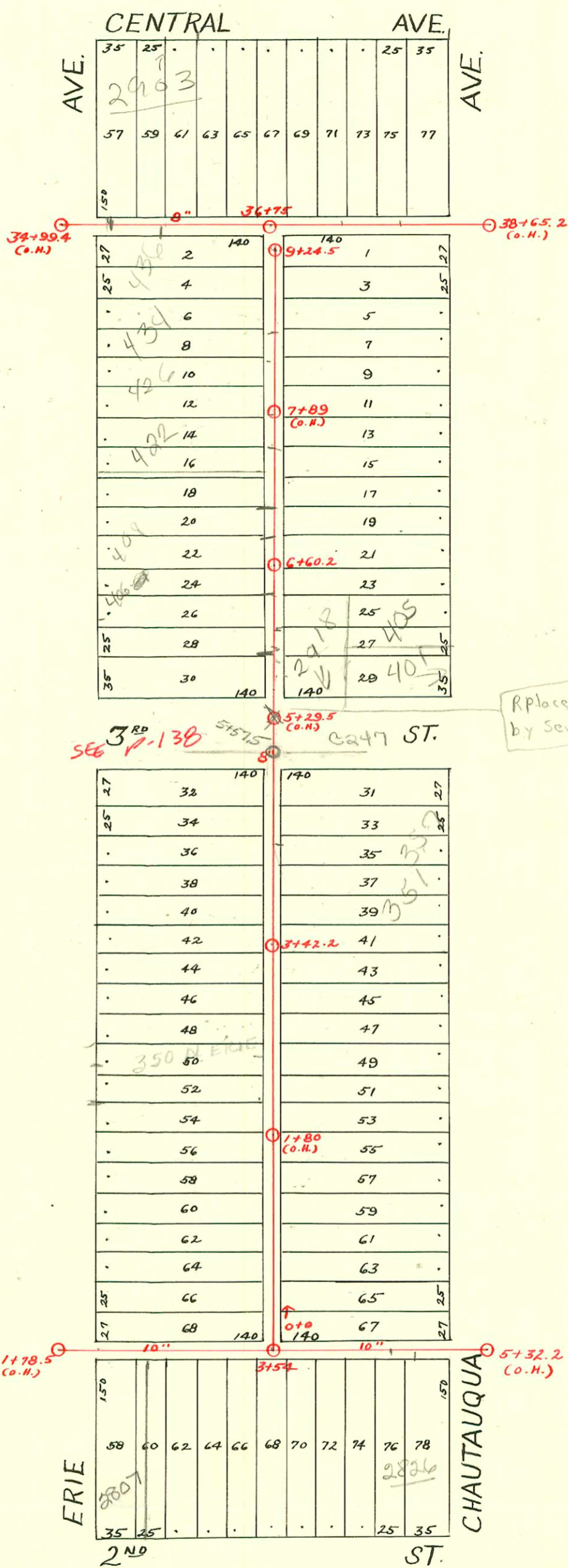


DIST. C - S.S. No. 12
1911



Rplaced pipe (PVC) at O.H.
by Sewer Maint. 4-24-89

Rplaced pipe (PVC) at O.H.
by Sewer Maint. 4-24-89

CONSTRUCTION RECORD							SERVICE RECORD					
STATION	ELEVATION		Depth	MANHOLE	4-INCH "Y" BRANCHES		No. of Permit		House Number		DATE OF PERMITS	
	Ground	Grade			North West	South East	North West	South East	North West	South East	North West	South East
1	125.25	115.47	9.78	1+78.5(0.4)								
2	125.65	116.57	9.08					#654				6-12-22
								#1692				12-9-22
3	126.75	117.67	9.08					#251				4-2-20
	127.05	118.26	8.79	3+54				#634				8-28-17
								#235				5-2-13
4	127.05	118.77	8.28					#34				2-23-12
								#2445		311 N. Chautauque		6-24-40
5	127.65	119.87	7.78	5+32.2(0.4)								
0	127.08	118.42	8.66	0+00	0+24	0+21.5	#754		312 N. Erie			7-13-28
					+52	+49.5		#4				1-20-12
					+77	+74.5	#731		324 N. Erie			8-30-27
					+99.5	+97		#546				6-14-11
1	128.28	118.74	9.54		1+25	1+22.5		#547				6-14-11
					+45	+42.5	#200					5-20-16
					+75.5	+73	#170	#112	348 N. Erie			3-31-17
						+98						
2	128.88	119.06	9.82		2+00.5		#198		350 N. Erie			3-19-20
					+26	2+23.5		#514				7-20-17
					+54	+51.5	#572					6-28-21
					+79	+76.5						
3	129.28	119.38	9.90		3+04.5	3+02	#410	#919				9-30-16
					+29.5	+27						5-16-19
				3+42.2	+54.5	3+52	#2471	#1197	364 N. Erie			9-23-50
					+80	+77.5	#501					4-9-23
4	130.03	119.70	10.33		4+06	4+03.5	#2477	#725	381 N. Chautauque			11-4-24
					+30.5	+28	#1255	#393				9-27-22
					+54	+51.5	#1288					10-3-22
5	128.33	120.02	8.31		5+58	5+53.5		#68				12-21-95
					+82.5	5+60.5		#777		2918 E. 3RD		7-14-25
6	124.53	120.34	4.19		6+08	6+05.5	#1923	#1307	405 N. Chautauque			12-7-25
					6+32.5	+30	#1187		406 N. Erie			11-30-21
					+56	+53.5		#400				7-19-13
				6+60.2	6+83.5	+81	#262	#1523				12-17-21
7	129.63	120.66	8.97		7+08.5	7+06	#167					3-9-20
					+34	+31.5		#11				1-12-20
					7+59.5	+57	#168		422 N. Erie			7-26-27
					7+85	+82.5	#2676	#1099				3-9-20
8	128.83	120.98	7.85		8+10	8+07.5						12-8-24
					8+35.5	+33						11-8-21
					8+60	+57.5	#8772	#478	434 N. Erie			7-28-87
					+85	+82.5	#910					5-14-19
9	127.73	121.30	6.43		9+15.5	9+13		#477				4-5-23
	127.53	121.38	6.15	9+24.5								
34				34+99.4(0.4)								
35	126.08	119.89	6.19		35+40.5		#113		1st Baptist Church			2-23-27
					35+63		18729		2903 Central			7-20-87
					35+88.5	35+82.5		#23076	436 N. Erie			3-1-71
36	126.72	120.69	6.03		36+14							
					+39.5							
				36+75	+65							
					+87							
37	127.72	121.29	6.43		37+09.5				2925 E. Central			8-28-50
					37+35		#2119					
					+60							
					+85		#145					2-28-20
38	129.72	124.41	5.31		38+10.5							
				38+65.2(0.4)								

95-20721-5/6
 #1396-101 N. Chautauque - Russell - Frederick - 12-21-95 = 122 ft South of MH + 7 ft from main
 -2-26-85 - 5+90.9 (w/14)

R 2086-0043-1-18-06-341 N Chautauque - 124.4' South of MH, (2) 45V, Predco, 4" sch 40 PVC, Alley cut - AE Henning