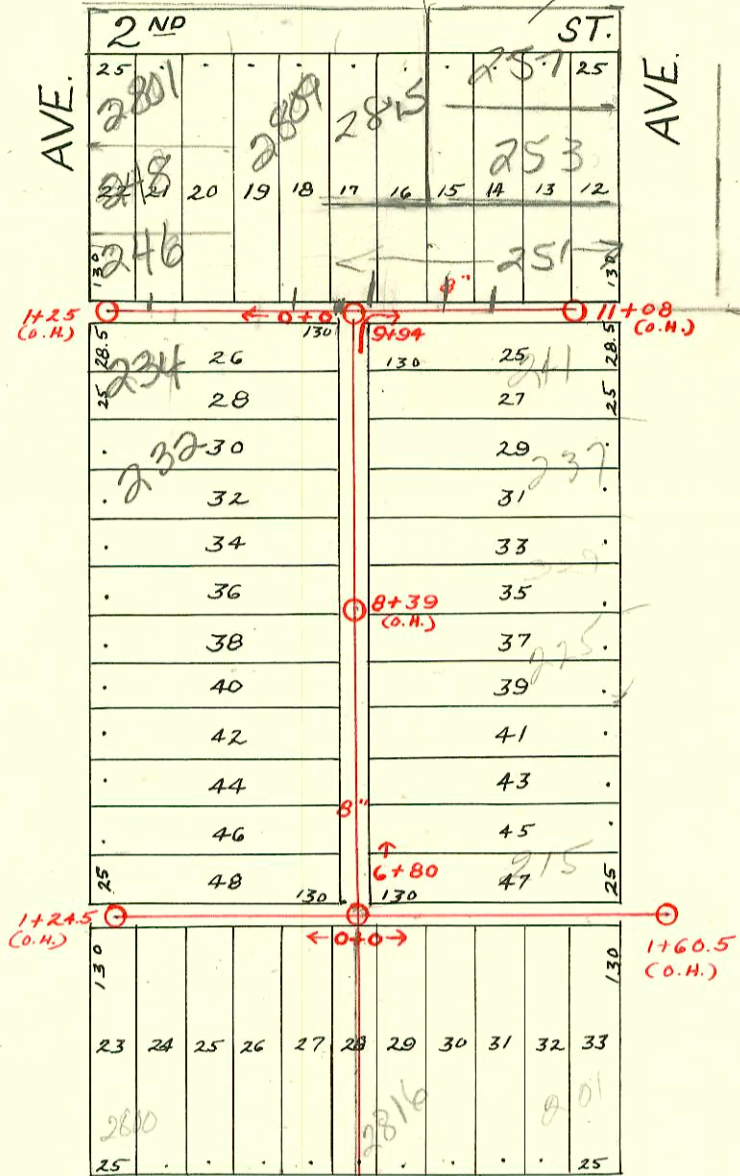


DIST. B-S.S. 12  
1911

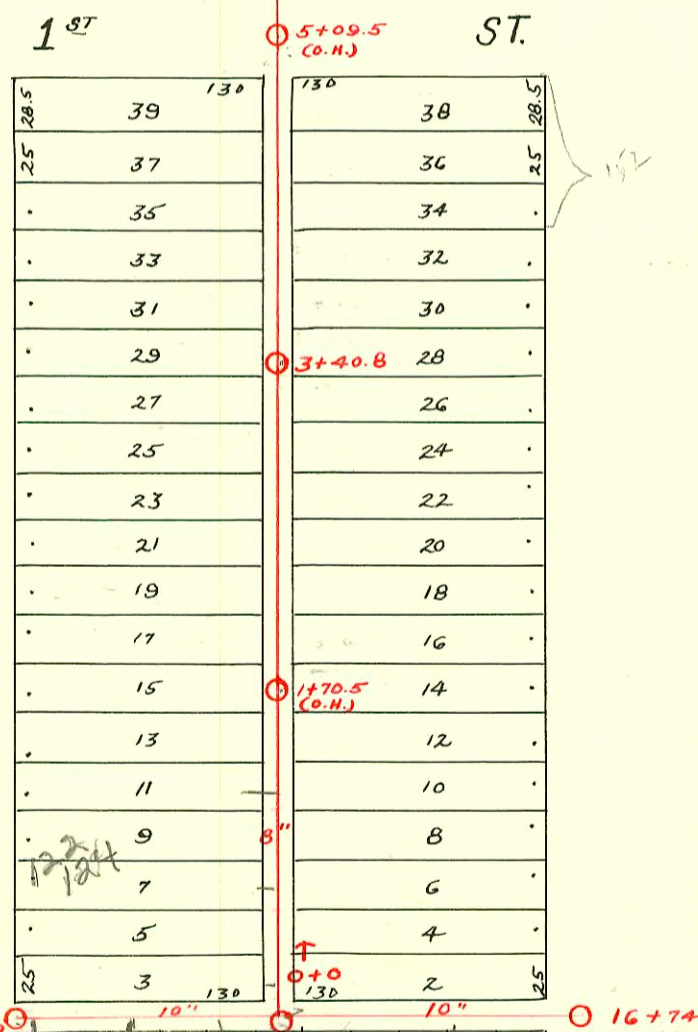
see copy of F. Mart  
vac 20' of 2nd ST



2815 E 2nd } shape conn.  
 257 N Erie } at 221' W of  
 Mt 5647-460

251 N Erie } TAPS at 156' W  
 of Mt 5647-460

253 N Erie } TAPS at 180' W  
 of Mt 5647-460



114 N. Volutsia  
 Do Not issue a Bldg  
 permit until issue  
 of serv  
 for 2802  
 and 2808  
 E. Douglas  
 Resolved -  
 Noed p. li.  
 lease - agree  
 BSR  
 5/13/02

2003-02038 - 8/15/03 - 124 N Volutsia - Redd Root - 12' of pulled pipe - atwinco 4" SCH40 PVC  
 2 ferreo

SWR 2002-01230 4/29/02 114 N Volutsia Board Man: slo w/ concrete 58'E  
 of Mt 13+79 (14+37)

| CONSTRUCTION RECORD |           |        |       |               |                                    |  | SERVICE RECORD                    |                     |   |   |                                 |                                |
|---------------------|-----------|--------|-------|---------------|------------------------------------|--|-----------------------------------|---------------------|---|---|---------------------------------|--------------------------------|
| STATION             | ELEVATION |        | Depth | MANHOLE       | 4-INCH "Y" BRANCHES                |  | No. of Permit                     |                     | House Number  |   | DATE OF PERMITS                 |                                |
|                     | Ground    | Grade  |       |               | North West                         | South East   | North West                        | South East          | North West  | South East                                | North West                      | South East                     |
| 13                  | 117.19    | 109.24 | 7.95  | 13+79         |                                    | 13+87.5  |                                   | #6                  |   | 2803-04 (2804 changed to 2805) E. Douglas |                                 | 1-3-18                         |
| 14                  | 117.39    | 109.64 | 7.75  |               | 14+21                              | 14+12.5<br>+37.5<br>+62.5<br>+88                     | #47                               | #6                  | 118 N. Volusia  |   | 11-23-42                        | 1-25-12                        |
| 15                  | 118.39    | 110.04 | 8.35  | 15+13         |                                    | 15+18.5<br>+44<br>+69                                | #524<br>#510                      |                     | 2810 E. Douglas<br>2836 E. Douglas                        |   | 10-27-15<br>10-21-15            |                                |
| 16                  | 118.89    | 110.44 | 8.45  |               | 16+02                              | 16+02<br>+32   | #235                              | #3482               | 2826 E. Douglas   |   | 3-30-11                         | 6-5-15<br>2-23-12              |
|                     |           |        |       | 16+74 (O.H.)  |                                    |  |                                   |                     |   |   |                                 |                                |
| 0                   | 118.20    | 109.94 | 8.26  |               | 0+18                               | 0+15.5<br>+43<br>+41.5<br>+67.5<br>+93.5             | #351<br>#456<br>#363              | #866<br>#300        | 124 N. Volusia  | see next pg                               | 6-23-13<br>#5-83                | 10-27-16<br>4-21-11<br>6-17-15 |
| 1                   | 118.60    | 110.39 | 8.21  |               | 1+18                               | 1+15.5<br>+43<br>+42                                 | #829                              |                     |   |   | 11-12-17                        |                                |
|                     |           |        |       |               | 1+66                               | +63.5<br>+88.5<br>+82                                | #270                              |                     | 130 N. Volusia  |   | 5-4-14                          | 5-15-12                        |
| 2                   | 118.40    | 110.84 | 7.56  |               | 2+16                               | 2+13.5<br>+41<br>+40                                 | #164                              | #869                |   |   | 3-30-17<br>11-22-11             | 11-9-11                        |
|                     |           |        |       |               | 2+66.5                             | +64<br>+89   | #890                              |                     |   |   |                                 | 8-18-11                        |
| 3                   | 119.30    | 111.29 | 8.01  |               | 3+17                               | 3+15.5<br>+49.5<br>+47                               | #1270                             |                     | 145 N. Erie   |   | 10-7-19                         | 4-24-11<br>11-30-17            |
|                     |           |        |       | 3+40.8        | 3+74.5                             | +72<br>+99.5<br>+97                                  | #914                              |                     |   |   | 6-19-23                         |                                |
| 4                   | 119.80    | 111.74 | 8.06  |               | 4+24.5                             | 4+22<br>+35.5<br>+60<br>+57.5                        | #562                              | #296                |   |   | 9-10-18                         | 4-11-11                        |
| 5                   | 119.52    | 112.19 | 7.33  |               | 5+58                               | 5+55.5<br>+83<br>+80.5                               | #726                              |                     |   |   | 10-2-17                         |                                |
| 6                   | 121.02    | 112.64 | 8.38  |               | 6+08.5                             | 6+06<br>+33<br>+30.5<br>+58<br>+55.5                 |                                   |                     |   |   |                                 |                                |
|                     |           |        |       | 6+80          | 6+89                               | 6+86.5   | #3752                             |                     | 215 N. Erie   |   | 1-13-53                         |                                |
| 7                   | 121.71    | 113.09 | 8.62  |               | 7+14.5                             | 7+12<br>+39.5<br>+37<br>+64.5<br>+62<br>+89.5<br>+87 | #650<br>#383                      |                     |   |   | 9-1-17<br>5-15-20               | 2-19-12                        |
| 8                   | 122.02    | 113.54 | 8.48  |               | 8+14.5                             | 8+12<br>+44.5<br>+42<br>+67<br>+64.5<br>+92<br>+89.5 | #377<br>#675                      | #741<br>#117        |   |   | 7-7-13<br>12-8-18               | 8-29-11<br>7-31-19             |
| 9                   | 122.62    | 113.99 | 8.63  |               | 9+17                               | 9+14.5<br>+42<br>+39.5<br>+67<br>+64.5               | #432                              | #204                |   |   | 8-4-13                          | 4-29-15                        |
|                     |           |        |       | 9+94          | 9+94                               |  |                                   |                     |   |   |                                 |                                |
| 10                  | 123.44    | 114.46 | 8.98  |               | 10+13                              | 10+13<br>10+16<br>10+38<br>10+63<br>10+88.5          | #2<br>#2003-01102<br>#285<br>#358 |                     | 253 N. Erie<br>2815 N. Erie<br>253 N. Erie<br>251 N. Erie | see above for reconnect                   | 1-2-19<br>5-12-17<br>6-1-17     |                                |
| 11                  | 123.64    | 115.46 | 8.18  |               | 11+13.5                            |  |                                   |                     |   |   |                                 |                                |
| 0                   | 123.44    | 114.40 | 9.04  | 0+0           | 0+07.5<br>0+32.5<br>+57.5<br>+82.5 | 0+77   | #256<br>2000-01158                |                     | 2811 E. Erie<br>2809 E. Erie                              |   | 4-6-21<br>5/9/00                | 11-3-17                        |
| 1                   | 123.14    | 115.40 | 7.74  |               | 1+05                               | 1+20   | #1554                             | #803                |   |   | 11-16-22                        |                                |
|                     |           |        |       | 1+25 (O.H.)   |                                    |  |                                   |                     |   |   |                                 |                                |
| 0                   | 121.42    | 113.00 | 8.42  | 0+0           |                                    | 0+19.5<br>+44.5<br>+70<br>+95                        |                                   | #697<br>#997<br>#71 | 2804 E. Erie  |   | 11-25-14<br>11-14-27<br>2-18-13 |                                |
| 1                   | 121.42    | 114.00 | 7.42  | 1+24.5 (O.H.) |                                    | 1+20   |                                   |                     |   |   |                                 |                                |
| 0                   | 121.42    | 113.00 | 8.42  | 0+0           |                                    | 0+14.5<br>+39.5<br>+64.5<br>+89                      | #48<br>#481                       |                     | 2816 E. Erie  |   | 1-26-17<br>9-27-15              |                                |
| 1                   | 122.62    | 114.00 | 8.62  |               | 1+14                               | 1+14   | #561                              |                     |   |   | 11-15-15                        |                                |
|                     |           |        |       | 1+60.5 (O.H.) |                                    |  |                                   |                     |   |   |                                 |                                |

#3755 - Top - 2824 E. Douglas - Roy Farrell - 1-13-53  
 #5834 - Top - 202 N. Volusia - Connected to private line at Y 25' No. of 9+94 - 8-1-55  
 #903 Top 241 N. Erie - 12-15-58 10+40  
 2000-01158-2809 E 2nd - FORSHEE - Replaced 10'-LOW END 5/9/00